

# Semi-Annual Safeguard Social Monitoring Report

---

**Loan Number : 2787-IND & 2788 -IND**

**Reporting Period : Oct.'16 to Mar'17**

## National Grid Improvement Project

**Prepared by : ESMD, CORPORATE CENTRE, POWERGRID**

**Implementing Agency : POWERGRID**

**Executing Agency : POWERGRID**

**Date : 31/05/2017**

---

## ABBREVIATIONS

ADB	–	Asian Development Bank
APs	–	Affected Persons
CEA	–	Central Electricity Authority
CTU	–	Central Transmission Utility
EA	–	Executing Agency
EIA	–	Environment Impact Assessment
ESPP	–	Environment and Social Policy & Procedures
ESMD	–	Environment & Social Management Department
EMF	–	Electro Magnetic Fields
EMP	–	Environmental Management Plan
GIS	–	Gas Insulated Switchgear
GO	–	Government Order
GoI	–	Government of India
GRM	–	Grievances Redressal Mechanism
GRC	–	Grievance Redressal Committee
HVDC	–	High Voltage Direct Current
IEE	–	Initial Environmental Examination
IPP	–	Independent Power Producer
km	–	Kilometers
LTOA	–	Long-Term Open Access
MoEF	–	Ministry of Environment and Forests
PAPs	–	Project Affected Persons
POWERGRID	–	Power Grid Corporation of India Ltd.
PMU	–	Project Management Unit
RoW	–	Right of Way
RAP	–	Rehabilitation Action Plan
S/s	–	Substation
WR	–	Western Region
NR	–	Northern Region

## TABLE OF CONTENTS

<b>Section</b>	<b>Description</b>	<b>Page No.</b>
Section 1	: Introduction	- 4
1.1	: Scope of project	- 5
1.2	: Project Objectives	- 5
1.3	: Overall Project Progress, Agreed Milestones and Implementation Schedules	- 5
Section 2	: Compliance Status with Major Loan Covenants	- 6-8
Section 3	: Compliance Status with Social Management and Monitoring Plan agreed with ADB	- 8-26
Section 4	: Approach and Methodology adopted for Monitoring of the Project	- 27
Section 5	: Details of Grievance Redress Committee and Complaints Received and action taken	- 27
Section 6	: Conclusion	- 28

## SECTION 1: INTRODUCTION

Power Grid Corporation of India Ltd. (POWERGRID), the Central Transmission Utility (CTU) of the country, is engaged in power transmission with the mandate for planning, co-ordination, supervision and control over complete Inter-State transmission system. It has been contributing significantly towards development of Indian power sector by undertaking coordinated development of power transmission network along with effective and transparent operation of regional grids and through continuous innovations in technical & managerial fields.

POWERGRID has received a nos. of Long-Term Open Access (LTOA) applications from Independent Power Producer (IPP) generation projects coming up in Chhattisgarh for transfer of power to different target regions viz. Western and Northern region. It is estimated that IPP generation projects with long-term power transfer requirement of about 15000-16000 MW is coming up in Raigarh (Kotra), Champa, Raigarh (Tamnar) and Raipur generation complex in Chhattisgarh progressively in next 3-4 years. Out of the 15000-16000 MW quantum of power transfer requirement, about 5000 MW power is indicated for transfer to Northern region as the target region and balance power is to be transferred to the Western region. For evacuation and transfer of power from these generation projects, 765/400kV High Capacity Pooling stations viz. at Raigarh (Kotra), Raigarh (Tamnar), Raipur and Champa is proposed. However, considering the quantum of power transfer requirement (about 5000 MW) to Northern region, it is proposed that a new high capacity transmission corridor may be developed to effect above transfer.

Based on the discussion with IPPs and Central Electricity Authority (CEA) as well in the 29<sup>th</sup> & 30<sup>th</sup> Standing Committee meeting on Power System planning in Western region/11<sup>th</sup> meeting of WR constituents regarding LTOA application in WR, transmission system for above generation projects in Chhattisgarh with power transfer requirement to target regions was agreed. Looking at the transmission system requirement for transfer of power to Northern/Western region from generation projects coming up in Chhattisgarh, a comprehensive transmission scheme on system strengthening in Western- Northern inter-regional HVDC transmission corridor is proposed.

Presently, North-West inter-regional transmission corridors are being developed with AC technology. However, considering the long distance as well quantum of power transfer requirement to NR from IPP generation projects in Chhattisgarh, it is proposed that power from IPP generation projects in Chhattisgarh can be transferred over HVDC system. Development of such HVDC transmission corridors shall facilitate in establishing transmission corridors with hybrid technology. This shall also facilitate in meeting controlled power flow requirement, flexibility of operation as well as maintaining system parameters within limits through its control mechanism. For this  $\pm 800$ kV, 3000MW HVDC bipole between Champa Pooling Station and Kurukshetra, a major load center in NR is proposed. For power transfer from Kurukshetra onwards, a 400kV transmission corridor towards Nakodar/ Jallandhar in Punjab is proposed. It is also proposed that provision should be kept to upgrade above HVDC Bipole to 6000MW at a later date with increased power transfer requirement to Northern region.

To meet the funding requirement for the proposed project, Asian Development Bank (ADB) has accepted POWERGRID proposal to finance a loan of USD 750 million (USD 500 million as Sovereign & USD 250 million as Non-Sovereign) for implementation of HVDC Sub- Station at Champa & Kurukshetra and some package of transmission line. The funding for the remaining part will be met from POWERGRID's own Internal

Resources (IR). The loan no.2787 was signed on 30<sup>th</sup> March, 2012 and became effective from 22<sup>nd</sup> October, 2012. The loan closing date is 30<sup>th</sup> June, 2017. Loan no. 2788 was signed on 30<sup>th</sup> March, 2012 and became effective from 22<sup>nd</sup> October,2012. The loan closing date is 30<sup>th</sup> June, 2017.

## 1.1 SCOPE OF PROJECT

The National Grid Improvement Project covered under Loan No. 2787-IND and 2788 - IND involves:

1. Establishment of HVDC Inter-regional transmission system between the Northern (Haryana) and Western (Chhattisgarh) regions. The detail scope of the project covered under above loans include following transmission facilities:
  - i. Construction of  $\pm 800$ kV HVDC Bipole between Champa (in Chhattisgarh) and Kurukshetra (in Haryana).
  - ii. Establishment of 800kV HVDC terminals at Champa and Kurukshetra
2. Inter-Regional System strengthening Scheme for WR and NR (Part-B)\*
  - i. Orai-Aligarh 765 kV D/c line
  - ii. Orai-Orai (UPPTCL) 400kV D/c (Quad) line
  - iii. LILO of Agra-Meerut 765 kV S/c line at Aligarh substation
  - iv. LILO of Kanpur- Jhatikara 765 kV S/c line at Aligarh substation.

\* Associated substation facilities are not covered under the funding.

## 1.2 PROJECT OBJECTIVES

The objective of the project is to provide transmission arrangement so as to transfer power from future IPP generation projects in the State of Chhattisgarh to Northern and Western region with reliability and security.

The additional components under IRSSS (Part-B) aim to facilitate the efficient and reliable power transfer between NR and WR.

## 1.3 OVERALL PROJECT PROGRESS, AGREED MILESTONES & COMPLETION SCHEDULES

Name of project	Project Details	Progress as on Mar.'2017	Completion Schedule
Establishment of HVDC inter-Regional Transmission System between the Northern (Haryana) and Western (Chhattisgarh) Regions	<p><b>Transmission Line:</b> Construction of +800kV HVDC Bipole between Champa (in Chhattisgarh) and Kurukshetra (in Haryana)</p> <p><b>Substation:</b> Establishment of 800kV HVDC terminals at Champa and Kurukshetra</p>	1st Pole commissioned in Mar'17 and 2nd pole is expected to be commissioned by Jun'17.	June' 2017 (extended)
Inter-Regional System Strengthening Scheme for WR and NR (Part-B)	<p><b>Transmission Line:</b></p> <ul style="list-style-type: none"> <li>• Orai-Aligarh 765 kV D/c line</li> <li>• Orai-Orai (UPPTCL) 400 kV (Quad) line</li> </ul>	Supply, Erection and Civil Works is under process.	April'2018

	<ul style="list-style-type: none"> <li>• LILO of Agra-Meerut 765 kV S/c line at Aligarh substation</li> <li>• LILO of Kanpur-Jhatikara 765 kV S/c line at Aligarh substation.</li> </ul>		
--	--	--	--

## SECTION 2 : COMPLIANCE STATUS WITH MAJOR LOAN COVENANTS

POWERGRID has complied with various social safeguards as agreed in the loan covenants. The point wise compliance status is presented in the table below;

**Table-1 : Compliance Status.**

<b>Project Specific Covenants</b>	<b>Reference</b>	<b>Status of Compliance</b>
The Borrower shall ensure, or cause to be ensured, that all land and all rights-of-way required for the Project are made available to the works contractor in accordance with the schedule agreed under the related works contract and all land acquisition and resettlement activities are implemented in compliance with (a) all applicable laws and regulations of the Guarantor and the relevant States relating to land acquisition and involuntary resettlement; (b) ESPP; (c) the Involuntary Resettlement Safeguards; and (d) all measures and requirements set forth in the CPTD and the RP, and any corrective or preventative actions set forth in the Safeguards Monitoring Report.	LA, Sch. 5, para. 14	Being complied.
Without limiting the application of the Involuntary Resettlement Safeguards, the CPTD or the RP, the Borrower shall ensure that no physical or economic displacement takes place in connection with the Project until: (a) compensation and other entitlements have been provided to affected people in accordance with the CPTD or the RP; and (b) a comprehensive income and livelihood restoration program has been established in accordance with the RP.	LA, Sch. 5, para. 15	Being complied.
In the event irrigation supplies are disrupted and affected farmers experience losses, the Borrower shall ensure that a provision is made for independent valuation of the losses and timely compensation in respect thereof.	LA, Sch. 5, para. 16	Not applicable as no such instances observed/reported till date.
The Borrower shall make available necessary budgetary and human resources to fully implement the EMP, the CPTD and the RP.	LA, Sch. 5, para. 17	Complied.

<p>The Borrower shall ensure that all bidding documents and contracts for works contain provisions that require contractors to:</p> <ul style="list-style-type: none"> <li>(a) comply with the measures relevant to the contractor set forth in the IEE, the EMP, the CPTD and the RP (to the extent they concern impacts on affected people during Construction), and any corrective or preventative actions set forth in the Safeguards Monitoring Report;</li> <li>(b) make available a budget for all such environmental and social measures;</li> <li>(c) provide the Borrower with a written notice of any unanticipated environmental, resettlement or indigenous peoples risks or impacts that arise during construction, implementation or operation of the Project that were not considered in the IEE, the EMP, the CPTD and the RP;</li> <li>(d) adequately record the condition of roads, agricultural land and other infrastructure prior to starting to transport materials and construction; and</li> <li>(e) Reinstate pathways, other local infrastructure, and agricultural land to at least their pre-project condition upon the completion of construction.</li> </ul>	<p>LA, Sch. 5, para. 18</p>	<p>Complied</p>
<p>The Borrower shall do the following:</p> <ul style="list-style-type: none"> <li>(a) submit semiannual Safeguards Monitoring Reports to ADB and disclose relevant information from such reports to affected persons promptly upon submission;</li> <li>(b) if any unanticipated environmental and/or social risks and impacts arise during construction, implementation or operation of the Project that were not considered in the IEE, the EMP, the CPTD and the RP, promptly inform ADB of the occurrence of such risks or impacts, with detailed description of the event and proposed corrective action plan;</li> </ul>	<p>LA, Sch. 5, para. 19</p>	<p>Being complied.</p> <p>No such issues came across till date.</p>
<ul style="list-style-type: none"> <li>(c) report any actual or potential breach of compliance with the measures and requirements set forth in the EMP, the CPTD and the RP promptly after becoming aware of the breach; and</li> <li>(d) in the event unexpected significant safeguard impacts are identified, promptly engage qualified and experienced external expert or agency under terms of reference intimated to ADB, to verify information produced through the Project monitoring process, and facilitate the carrying out of any verification activities by such external experts.</li> </ul>		<p>Not applicable as till date no such breach reported.</p>
<p>The Borrower shall ensure that subsequent to award of works contract, no works are commenced by the contractor unless the applicable provisions of the IEE, the EMP, the CPTD and the RP, as approved by ADB, have been complied with.</p>	<p>LA, Sch. 5, para. 20</p>	<p>Complied.</p>

In relation to the Project, the Borrower shall cause the contractors to undertake detailed survey of the affected persons during transmission line alignment finalization. The Borrower shall prepare CPTD which meets ADB's requirements, and update it based upon the detailed design information during the survey carried out by work contractors. The Borrower shall submit to ADB for approval the revised CPTD progressively during the implementation of the related works.	LA, Sch. 5, para. 21	Complied
Any changes to the location, land alignment, or environment impacts on account of detailed designs of the Project shall be subject to prior approval by ADB before commencement of works for transmission lines under the Project.	LA, Sch. 5, para. 22	Not applicable as no such deviation reported so far.
In the event of any significant or related impacts on indigenous peoples, the Borrower shall prepare and implement an indigenous peoples plan in accordance with the applicable laws and regulations of the Guarantor and the relevant States, and the Indigenous Peoples Safeguards.	LA, Sch. 5, para. 23	Not applicable as No Indigenous people involved/ impacted so far.

### SECTION: 3 COMPLIANCE STATUS WITH SOCIAL MANAGEMENT AND MONITORING PLAN AS AGREED WITH ADB

A summary of the environmental & social mitigation measures their monitoring vis-a vis compliance by POWRGRID's is given in **Table 2**.

Details of land secured/acquired for both terminals are mentioned below-

- A) Champa Substation:** In the RP, land requirement for HVDC station was mentioned as 116.7 acres as per preliminary assessment of 2011. However, after detailed assessment, the actual land details for HVDC Terminal (under funding) is 114.7 acres out of total 262 acres land of Champa Substation.

It is to inform you that the above mentioned land details is for entire Champa substation comprising of 800 kV HVDC portion (114.7 acres), 20 nos. of 765 kV bays (83.2 acres), 47 nos. of 400 kV bays including future bays (64.35 acres) and also colony area. Accordingly, the details of affected PAPs, Land compensation and R&R benefits have been given for the entire substation area and not specifically for the HVDC terminal.

As explained above the total land requirement for Champa Substation is 262.27 acres, land comprising of 158 acre govt. and 104.27 acre private land was secured. Accordingly land was acquired/ allotted for the entire substation and not separately for HVDC terminal.

#### **Govt. Land (158 acre)**

Govt. order for transfer of land issued on 30.09.11. DC issued order for possession of land on 23.11.11 and agreement signed on 25.11.11.

#### **Private land (104.27 acre)**

The private land was acquired by invoking Land Acquisition Act, 1894. Sec. - 4 issued on 25.08.11. Sec. - 6 issued on 25.11.11. Public hearing under Sec. - 9



held on 03.01.12 and 06.01.12. Award under Sec.-11 issued on 30.11.12. Possession of land taken by POWERGRID on 15.04.13.

At the very initial stage when acquisition was not initiated, ADB through consultant carried out social assessment for identified area of Champa substation and prepared RP which was approved in 2011. (Copy available on POWERGRID's and ADB's website). During the course of the demand of PAPs and R&R policy of Chhattisgarh the compensation package decided on negotiation i.e. 6 lakhs per acre for barren land, 8 lakhs per acre for unirrigated land and 10 lakhs per acre for irrigated land. Therefore, it contains all R&R package. Separate RAP was not required, hence not prepared. However as per policy the social assessment was awarded to third party (M/s Mittsoo Solution Pvt. Ltd. New Delhi) at the time of section-4 published under LA act 1894.

Public consultation was done with villagers to identify the Community Development Works. After detailed discussions POWERGRID has agreed upon the CDW suggested activities to develop in village. The details of which are as follows-

Sr. no.	Activity	Status
1	4 no. Solar Semi High lamp at village Taga and Chorbatti	<b>Completed</b> and taken up under CSR.
2	Community Center at village Taga	Land has been finalized on 20.04.17 and work is started.
3	Construction of bridge over Nallah/drain at village Taga	Work is under progress.
4	Elevated resting places for Cows/Buffaloes (Gothan) at village Taga	NIT issued.
5	Development of area around Community Center and boundary wall at village Taga	Tendering work under progress.
6	Retaining wall for drain at village Taga	Tendering work under progress.
7	Bus stop at village Chorbatti	NIT issued
8	Development of playground and children park at village Chorbatti	Tendering work under progress.

Further many CSR activities have been taken up in the affected villages. The details of which are as follow-

1. Construction/repair of roads in village Jayjaypur, District Janjgir –Champa – 20 lakhs
2. Health check up camp organised in village Taga. Total 186 villagers participated in the program. The health check up included blood pressure monitoring, eye check up, ECG, general physician consultation etc.
3. Providing Furniture in Central school at village Janjgir- 52.91 lakhs.

**B) Kurukshetra Substation:** Since RP was prepared and submitted in Jun'2011, the data and figures given were based on preliminary assessment. The land requirement as per preliminary assessment was 225 acres of which 75 acres were private land. After fixation of general arrangement/ layout of Air Insulated Substation (AIS) substation land area requirement reduced and proposal for land

acquisition of 173 acres was submitted to state govt.

State govt. has asked Haryana Vidyut Prasaran Nigam Limited (HVPNL) for recommendation. Joint review has taken place with POWERGRID and HVPNL to reduce the land area further and it was decided then to shift the 400 kV Air Insulated Substation (AIS) to Gas Insulated Substation (GIS) resulting in reduced land area with consent from HVPNL to bear the additional cost for it. (Copy of communication enclosed for ready reference as **Annex-1**).

Adopting GIS technology/ vertical configuration etc. on the recommendation from HVPNL, POWERGRID has opted for GIS 400 kV switchyard and area was reduced to 116 acres which was totally govt./ Panchayat land. Possession for this land was taken on 17.10.12. Since the land secured was govt. owned encroachment free land there are no PAPs involved and no RAP required. However, a public consultation was done with villagers to identify the Community Development works. The following community development works were identified with priorities given by villagers:

- Construction of interlocking path within the village
- Const, of Shamshan shed, Bramda shamshan & B.Wall.
- Construction of interlocking paver main phirni and Nala.
- Construction of Community Centre and Shamshan Bramda.
- Interlocking pavement in Rajiv Gandhi Sewa Kendra.
- Construction of 5 nos. Toilets.
- Construction of Bramda in Harijan Choupal.

After the detailed discussion POWERGRID has agreed upon the CDW suggested activities to develop in village and made an estimate budget Rs. 92.34 lakhs. The status of work is as follows-

<b>Sr. No.</b>	<b>Activity</b>	<b>Status</b>
1	Construction of interlocking path within the village	<b>Work Completed.</b>
2	Construction of Shmshan shed, boundrywall and bramda	<b>Work Completed.</b>
3	Construction of ILPB main firni, construction of Nalla	<b>Work Completed.</b>
4	Construction of Community Center	<b>Work Completed.</b>
5	Construction of ILPB Pavement in Rajiv Gandhi Sewa Kendra	<b>Work Completed.</b>
6	Construction of 5 no. Toilets	With villagers consent the alternate work has been added to community center.
7	Construction of Bramda in Harijan Choupal	Work undertaken by Panchayat

### **Compensation for acquired land**

POWERGRID always tries to pay compensation at prevailing market prices/ replacement value. In instant case only Champa substation has partially private land

requirement. At Champa after taking all the measures to find suitable site, the selected site by our committee has private land to acquire. Hence DC is approached by POWERGRID with request to take all possible steps for calculation of land cost at market price.

“Adarsh Punarvas Neeti” 2007 Govt. of Chhattisgarh, has provided that land compensation is decided according to type/pattern of land in three categories which is 6 lakhs per acre for barren land, 8 lakhs per acre for unirrigated land and 10 lakhs per acre for irrigated land. In accordance to that POWERGRID was asked to pay land compensation at 10 lakhs per acre vide Award of land published under Sec.11 of Land acquisition Act 1894. As per the guidelines to calculate market value under LA act, 1894 the land compensation rate including 30% solatium and interest were ranging from Rs. 3,90,515/- to Rs. 4,86,081/- per acre depending on pattern of land. On the basis of this total land compensation was Rs.3,64,73,649/- for village Taga and Rs. 35,41,978/- for Village Chorbatti. However, POWERGRID has paid the land compensation in line with “Adarsh Punarvas Neeti” 2007 and paid the land rate at 10 lakhs per acre amounting total compensation Rs. 1229 lakhs.

Over and above during negotiation meetings we have agreed to pay 4 lakhs per acre as additional land compensation, 3 lakhs per acre in lieu of employment and in second phase of negotiation again 3 lakhs per acre in form of Rehabilitation Assistance has been given to all landowners amounting total Rs. 1043 lakhs/-. Total of 20 lakhs per acre including land compensation, compensation towards employment and R&R has been paid to landowners as per the final settlement.

The details for land for both the substation is mentioned below-

Substation Name	Acquired Land (in Acres)		No. of PAPs	Land compensation ( in Lakhs)			R&R (in Lakhs)
	Pvt.	Govt		Pvt.	Govt	Total	
Champa	104.27	158	258	1229	711	1940	1043
Kurukshetra	NIL	116.7	NIL	NIL	2845	2845	NA

#### Compensation for Tree/crop damages:

POWERGRID follows the principle of Avoidance, Minimization and Mitigation in the construction of line in agricultural field having crop due to inherent flexibility in phasing the construction activity and tries to defer construction in cropped area to facilitate crop harvesting. However, if it is unavoidable and is likely to affect project schedule, compensation is given at market rate for standing crops. The process tree/crop compensation is depicted in **Figure 1**. All efforts are also taken to minimize the crop damage to the extent possible in such cases. In the instant project also POWERGRID is taking all possible measures to avoid damages to crop/trees by taking up the construction activities during lean period or post-harvest season. As per the prevailing norms farming activity allowed after the construction work is completed. However, compensation for the loss of crops/trees/any structure etc. paid to Affected Persons (APs) for the area of damaged to mitigate the impacts probably 3 times i.e. during foundation work, tower erection & stringing as per the prevailing situation. Details of region wise compensation for different projects paid for tree/crop damages till Mar'17 is given below.

**Champa- Kurukshetra line –**

Sl. No	Location/ Region	No. of AP's	Affected Land Area (in Ha.)	Nos. of Tree affected	Compensation Paid for Crop damages (Rs. Lakh)			Compensation Paid for Tree damages (Rs. Lakh)		
					Foundation	Erection	Stringing	Foundation	Erection	Stringing
1.	HVDC line (Western Region-I portion)	5586	663.25	35539	175.05	183.85	191.97	4.33	0.92	736.00
2.	HVDC line (Western Region-II portion)	8272	2122.63	30667	413.83	380.25	317.77	45.06	59.97	355.39
3.	HVDC line (Northern Region-I portion)	20465	2464.74	97639	466.71	788.67	1578.6	35.96	35.50	464.75
	<b>Total</b>	<b>34323</b>	<b>5250.62</b>	<b>163854</b>	<b>1055.59</b>	<b>1352.77</b>	<b>2088.34</b>	<b>85.35</b>	<b>96.39</b>	<b>1556.19</b>

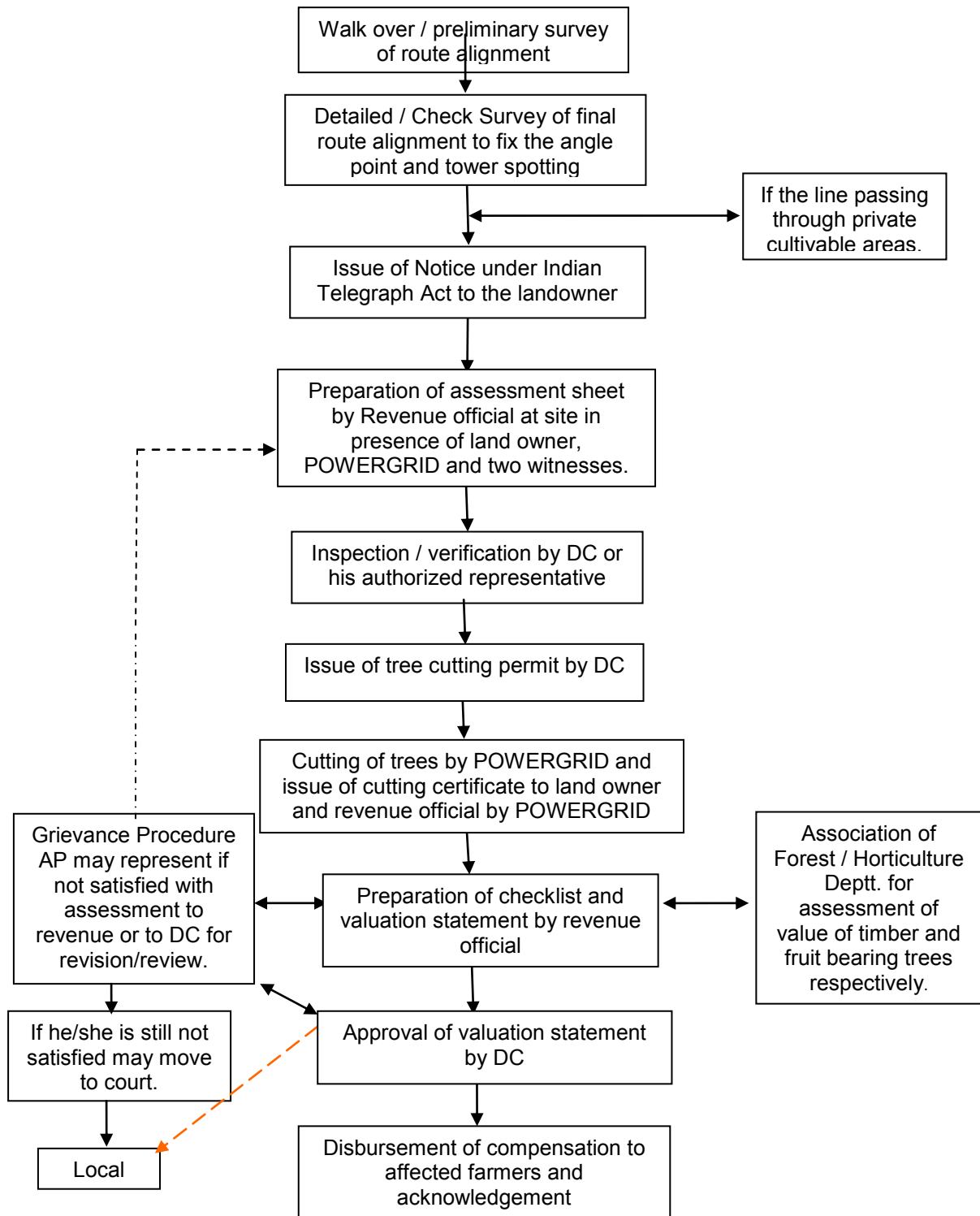
Total of **Rs.6234.63 lakhs** compensation paid towards tree/crop compensation till now against the provision kept in DPR Rs. 1273.21 lakhs. A sample copy of crop compensation notice along with payment details is enclosed at **Annex-2**.

**Orai- Aligarh line-**

Sl. No.	Location/ Region	No. of AP's	Affected Land Area (in Ha.)	Nos. of Tree affected	Compensation Paid for Crop damages (Rs. Lakh)			Compensation Paid for Tree damages (Rs. Lakh)		
					Foundation	Erection	Stringing	Foundation	Erection	Stringing
1.	Orai- Aligarh	4969	868.59	0	336.63	372.48	30.88	0	0	0
2	Orai- Orai (UPPTCL)	614	133.6	0	32.08	38.34	27.09	0	0	0
3	LILO of Agra- Meerut at Aligarh s/s	65	19.39	0	4.65	4.56	0	0	0	0
4	LILO of Kanpur- Jhatikara at Aligarh s/s	71	13.8	0	8.82	2.91	0	0	0	0
	<b>Total</b>	<b>5719</b>	<b>1035.38</b>	<b>0</b>	<b>382.18</b>	<b>418.29</b>	<b>57.97</b>	<b>0</b>	<b>0</b>	<b>0</b>

Total of **Rs.858.44 lakhs** compensation paid towards tree/crop compensation till now against the provision kept in DPR Rs. 2036 lakhs.

**Figure 1 : TREE / CROP COMPENSATION PROCESS**



**TABLE – 2 : ENVIRONMENT MANAGEMENT PLAN**

Project activity /stage	Potential impact	Proposed mitigation measure	Parameter to be monitored	Measurement & frequency	Institutional responsibility	Implementation schedule	Compliance Status
<b>Pre-construction</b>							
Location of transmission towers and transmission line alignment and design	Exposure to safety related risks	Setback of dwellings to overhead line route designed in accordance with permitted level of power frequency and the regulation of supervision at sites.	Tower location and line alignment selection with respect to nearest dwellings	Setback distances to nearest houses - once	POWERGRID	Part of tower siting survey and detailed alignment survey and design	
Equipment specifications and design parameters	Release of chemicals and gases in receptors (air, water, land)	PCBs not used in substation transformers or other project facilities or equipment.	Transformer design	Exclusion of PCBs in transformers stated in tender specification - once	POWERGRID	Part of tender specifications for the equipment	
		Processes, equipment and systems not to use chlorofluorocarbons (CFCs), including halon, and their use, if any, in existing processes and systems should be phased out and to be disposed of in a manner consistent with the requirements of the Govt.	Process, equipment and system design	Exclusion of CFCs stated in tender specification – once	POWERGRID	Part of tender specifications for the equipment	
				Phase out schedule to be prepared in case still in use – once			
Transmission line design	Exposure to electromagnetic interference	Transmission line design to comply with the limits of electromagnetic interference from overhead power lines	Electromagnetic field strength for proposed line design	Line design compliance with relevant standards - once	POWERGRID	Part of detailed alignment survey and design	
Substation location and design	Exposure to noise	Design of plant enclosures to comply with noise regulations.	Expected noise emissions based on substation design	Compliance with regulations - once	POWERGRID	Part of detailed siting survey and design	

Project activity /stage	Potential impact	Proposed mitigation measure	Parameter to be monitored	Measurement & frequency	Institutional responsibility	Implementation schedule	Compliance Status
Location of transmission towers and transmission line alignment and design	Impact on water bodies and land	Consideration of tower location at where they could be located to avoid water bodies or agricultural land.	Tower location and line alignment selection (distance to water and/or agricultural land)	Consultation with local authorities and land owners - once	POWERGRID	Part of tower siting survey and detailed alignment survey and design	Complied during survey. Route alignment criterion is part of survey contract.
	Social inequities	Careful route selection to avoid existing settlements	Tower location and line alignment selection (distance to nearest dwellings or social institutions)	Consultation with local authorities and land owners - once	POWERGRID	Part of detailed tower siting and alignment survey and design	
		Minimise need to acquire agricultural land	Tower location and line alignment selection (distance to agricultural land)	Consultation with local authorities and land owners - once	POWERGRID	Part of detailed tower siting and alignment survey and design	
Involuntary resettlement or land acquisition	Social inequities	Compensation paid for temporary/permanent loss of productive land as per LAA and its process	RAP implementation	Consultation with affected parties – once in a quarter	POWERGRID	Prior to construction phase	Progressive social entitlement framework is part of policy and implemented in true spirit
Encroachment into precious ecological areas	Loss of precious ecological values/ damage to precious species	Avoid encroachment by careful site and alignment selection	Tower location and line alignment selection (distance to nearest designated ecological protection area)	Consultation with local forest authorities - once	POWERGRID	Part of detailed siting and alignment survey /design	
Transmission line through forestland	Deforestation and loss of biodiversity	Avoid encroachment by careful site and alignment selection	Tower location and line alignment selection (distance to nearest protected or reserved forest)	Consultation with local authorities - once	POWERGRID	Part of detailed siting and alignment survey/design	
		Minimise the need by using existing towers, tall towers and RoW, wherever possible		Consultation with local authorities and design engineers - once			

Project activity /stage	Potential impact	Proposed mitigation measure	Parameter to be monitored	Measurement & frequency	Institutional responsibility	Implementation schedule	Compliance Status
		Obtain statutory clearances from the Government	Statutory approvals from Government	Compliance with regulations – once for each subproject			
Encroachment into farmland	Loss of agricultural productivity	Use existing tower footings/towers wherever possible	Tower location and line alignment selection	Consultation with local authorities and design engineers - once	POWERGRID	Part of detailed alignment survey and design	Complied during survey which is part of survey contract. However, as per law of land no land is acquired for transmission line tower but all damages are compensated as per provision of Electricity Act, 2003 and Indian Telegraph Act, 1885.
		Avoid siting new towers on farmland wherever feasible	Tower location and line alignment selection	Consultation with local authorities and design engineers - once		Part of detailed siting and alignment survey /design	
		Farmers compensated for any permanent loss of productive land	Design of Implementation of Crop Compensation (based on affected area)	Consultation with affected parties – once in a quarter		Prior to construction phase	
		Farmers/landowners compensated for significant trees that need to be trimmed/ removed along RoW.	Design of Implementation of Tree compensation (estimated area to be trimmed/ removed)	Consultation with affected parties – once in a quarter		Part of detailed siting and alignment survey /design	
			Statutory approvals for tree trimming /removal	Compliance with regulations – once for each subproject			
Noise related	Nuisance to neighbouring properties	Substations sited and designed to ensure noise will not be a nuisance.	Noise levels	Noise levels to be specified in tender documents – once	POWERGRID	Part of detailed equipment design	
Interference with drainage patterns/Irriga	Flooding hazards/loss of agricultural	Appropriate siting of towers to avoid channel interference	Tower location and line alignment selection (distance	Consultation with local authorities and design	POWERGRID	Part of detailed alignment survey and design	Complied during survey. Route alignment criterion is part of survey contract.



Project activity /stage	Potential impact	Proposed mitigation measure	Parameter to be monitored	Measurement & frequency	Institutional responsibility	Implementation schedule	Compliance Status
tion channels	production		to nearest flood zone)	engineers - once			
Escape of polluting materials	Environmental pollution	Transformers designed with oil spill containment systems, and purpose-built oil, lubricant and fuel storage system, complete with spill cleanup equipment.	Equipment specifications with respect to potential pollutants	Tender document to mention specifications - once	POWERGRID	Part of detailed equipment design /drawings	
		Substations to include drainage and sewage disposal systems to avoid offsite land and water pollution.	Substation sewage design	Tender document to mention detailed specifications - once	POWERGRID	Part of detailed substation layout and design /drawings	
Explosions /Fire	Hazards to life	Design of substations to include modern fire control systems/firewalls.	Substation design compliance with fire prevention and control codes	Tender document to mention detailed specifications - once	POWERGRID	Part of detailed substation layout and design /drawings	
		Provision of fire fighting equipment to be located close to transformers.					
<b>Construction</b>							
Equipment layout and installation	Noise and vibrations	Construction techniques and machinery selection seeking to minimize ground disturbance.	Construction techniques and machinery	Construction techniques and machinery creating minimal ground disturbance- once at the start of each construction phase	POWERGRID (Contractor through contract provisions as per Sec- VII, 44.7)	Construction period	
Physical construction	Disturbed farming activity	Construction activities on cropping land timed to avoid disturbance of field crops (within one month of harvest wherever possible).	Timing of start of construction	Crop disturbance –Post harvest as soon as possible but before next crop - once per site	POWERGRID (Contractor through contract provisions as per Sec-II, 2.5)	Construction period	Construction on farm land being undertaken mostly during post harvest period. Wherever crop loss occurs compensation paid to farm owners and an amount of <b>Rs.53.55 Cr.</b> has been paid so far.

Project activity /stage	Potential impact	Proposed mitigation measure	Parameter to be monitored	Measurement & frequency	Institutional responsibility	Implementation schedule	Compliance Status
Mechanized construction	Noise, vibration and operator safety, efficient operation	Construction equipment to be well maintained.	Construction equipment – estimated noise emissions	Complaints received by local authorities - every 2 weeks	POWERGRID (Contractor through contract provisions as per Sec-VIII, 44.7)	Construction period	
	Noise, vibration, equipment wear and tear	Turning off plant not in use.	Construction equipment – estimated noise emissions and operating schedules	Complaints received by local authorities - every 2 weeks	POWERGRID (Contractor through contract provisions as per Sec-VIII, 44.7)	Construction period	
Construction of roads for accessibility	Increase in airborne dust particles	Existing roads and tracks used for construction and maintenance access to the line wherever possible.	Access roads, routes (length and width of new access roads to be constructed)	Use of established roads wherever possible - every 2 weeks	POWERGRID (Contractor through contract provisions as per Sec-II, 2.8)	Construction period	
	Increased land requirement for temporary accessibility	New access ways restricted to a single carriageway width within the RoW.	Access width (meters)	Access restricted to single carriage -way width within RoW - every 2 weeks	POWERGRID (Contractor through contract provisions as per Sec-II, 2.8)	Construction period	Complied/ Being Complied
Temporary blockage of utilities	Overflows, reduced discharge	Temporary placement of fill in drains/canals not permitted.	Temporary fill placement (m <sup>3</sup> )	Absence of fill in sensitive drainage areas - every 4 weeks	POWERGRID (Contractor through contract provisions as per Sec-II, 2.6)	Construction period	

Project activity /stage	Potential impact	Proposed mitigation measure	Parameter to be monitored	Measurement & frequency	Institutional responsibility	Implementation schedule	Compliance Status
Site clearance	Vegetation	Marking of vegetation to be removed prior to clearance, and strict control on clearing activities to ensure minimal clearance.	Vegetation marking and clearance control (area in m <sup>2</sup> )	Clearance strictly limited to target vegetation - every 2 weeks	POWERGRID (Contractor through contract provisions as per Sec-VIII, 43.5 & Sec. II, 2.6)	Construction period	
Trimming /cutting of trees within RoW	Fire hazards	Trees allowed growing up to a height within the RoW by maintaining adequate clearance between the top of tree and the conductor as per the regulations.	Species-specific tree retention as approved by statutory authorities (average and maximum tree height at maturity, in meters)	Presence of target species in RoW following vegetation clearance – once per site	POWERGRID (Contractor through contract provisions)	Construction period	
	Loss of vegetation and deforestation	Trees that can survive pruning to comply should be pruned instead of cleared.	Species-specific tree retention as approved by statutory authorities	Presence of target species in RoW following vegetation clearance – once per site	POWERGRID (Contractor through contract provisions)	Construction period	
		Felled trees and other cleared or pruned vegetation to be disposed of as authorized by the statutory bodies.	Disposal of cleared vegetation as approved by the statutory authorities (area cleared in m <sup>2</sup> )	Use or intended use of vegetation as approved by the statutory authorities – once per site	POWERGRID (Contractor through contract provisions)	Construction period	
Wood/ vegetation harvesting	Loss of vegetation and deforestation	Construction workers prohibited from harvesting wood in the project area during their employment, (apart from locally employed staff continuing current legal activities)	Illegal wood /vegetation harvesting (area in m <sup>2</sup> , number of incidents reported)	Complaints by local people or other evidence of illegal harvesting - every 2 weeks	POWERGRID (Contractor through contract provisions as per Sec-II, 2.3)	Construction period	

Project activity /stage	Potential impact	Proposed mitigation measure	Parameter to be monitored	Measurement & frequency	Institutional responsibility	Implementation schedule	Compliance Status
Surplus earthwork/soil	Runoff to cause water pollution, solid waste disposal	Soil excavated from tower footings disposed of by placement along roadsides, or at nearby house blocks if requested by landowners	Soil disposal locations and volume (m <sup>3</sup> )	Acceptable soil disposal sites - every 2 weeks	POWERGRID (Contractor through contract provisions as per Sec-VIII, 43.5 & Sec-II, 2.6)	Construction period	
Site clearance	Vegetation	Tree clearances for easement establishment to only involve cutting trees off at ground level or pruning as appropriate, with tree stumps and roots left in place and ground cover left undisturbed	Ground disturbance during vegetation clearance (area, m <sup>2</sup> )	Amount of ground disturbance - every 4 weeks	POWERGRID (Contractor through contract provisions)	Construction period	
			Statutory approvals	Statutory approvals for tree clearances – once for each site	POWERGRID (Contractor through contract provisions)	Construction period	
Tower construction – disposal of surplus earthwork/fill	Waste disposal	Excess fill from tower foundation excavation disposed of next to roads or around houses, in agreement with the local community or landowner	Location and amount (m <sup>3</sup> ) of fill disposal	Appropriate fill disposal locations - every 2 weeks	POWERGRID (Contractor through contract provisions as per Sec-II, 2.6 & Sec-VIII, 43.5)	Construction period	
Storage of chemicals and materials	Contamination of receptors (land, water, air)	Fuel and other hazardous materials securely stored above high flood level.	Location of hazardous material storage; spill reports (type of material spilled, amount (kg or m <sup>3</sup> ) and action taken to control and clean up spill)	Fuel storage in appropriate locations and receptacles - every 2 weeks	POWERGRID (Contractor through contract provisions)	Construction period	
Construction schedules	Noise nuisance to	Construction activities only undertaken during the day	Timing of construction (noise	Daytime construction only	POWERGRID (Contractor	Construction period	

Project activity /stage	Potential impact	Proposed mitigation measure	Parameter to be monitored	Measurement & frequency	Institutional responsibility	Implementation schedule	Compliance Status
	neighbouring properties	and local communities informed of the construction schedule.	emissions, [dB(A)]	- every 2 weeks	through contract provisions as per Sec-VIII, 44.7)		
Provision of facilities for construction workers	Contamination of receptors (land, water, air)	Construction workforce facilities to include proper sanitation, water supply and waste disposal facilities.	Amenities for Workforce facilities	Presence of proper sanitation, water supply and waste disposal facilities - once each new facility	POWERGRID (Contractor through contract provisions)	Construction period	
Encroachment into farmland	Loss of agricultural productivity	Use existing access roads wherever possible	Usage of existing utilities	Complaints received by local people /authorities - every 4 weeks	POWERGRID (Contractor through contract provisions as per Sec-II, 2.8) Sec-II, 2.5 & Sec-II, 2.7	Construction period	Being complied. No complaints received from local peoples/ authorities
		Ensure existing irrigation facilities are maintained in working condition	Status of existing facilities				
		Protect /preserve topsoil and reinstate after construction completed	Status of facilities (earthwork in m <sup>3</sup> )				
		Repair /reinstate damaged bunds etc after construction completed	Status of facilities (earthwork in m <sup>3</sup> )				
	Social inequities	Compensation for temporary loss in agricultural production	Implementation of Crop compensation (amount paid, dates, etc.)	Consultation with affected parties – once in a quarter	POWERGRID	Prior to construction	Tried to minimise the loss. However, if there is any damage to tree/crop then damages are compensated. An amount of <b>Rs.70.93 Cr.</b> Paid towards crops & tree compensation during construction till Sep'16 (refer Table-2)
Uncontrolled erosion/silt runoff	Soil loss, downstream siltation	Need for access tracks minimised, use of existing roads.	Design basis and construction procedures	Incorporating good design and construction	POWERGRID (Contractor through	Construction period	

Project activity /stage	Potential impact	Proposed mitigation measure	Parameter to be monitored	Measurement & frequency	Institutional responsibility	Implementation schedule	Compliance Status
		Limit site clearing to work areas Regeneration of vegetation to stabilise works areas on completion (where applicable) Avoidance of excavation in wet season Water courses protected from siltation through use of bunds and sediment ponds	(suspended solids in receiving waters; area re-vegetated in m <sup>2</sup> ; amount of bunds constructed [length in meter, area in m <sup>2</sup> , or volume in m <sup>3</sup> ])	management practices – once for each site	contract provisions as per Sec-II,2.8)  As per Sec-II, 2.6		
Nuisance to nearby properties	Losses to neighbouring land uses/ values	Contract clauses specifying careful construction practices.	Contract clauses	Incorporating good construction management practices – once for each site	POWERGRID (Contractor through contract provision as per Sec-II, 2.8)	Construction period	No complaints received
		As much as possible existing access ways will be used	Design basis and layout	Incorporating good design engineering practices– once for each site			Complied/ Being Complied
		Productive land will be reinstated following completion of construction	Reinstatement of land status (area affected, m <sup>2</sup> )	Consultation with affected parties – twice- immediately after completion of construction and after the first harvest			No complaints received
	Social inequities	Compensation will be paid for loss of production, if any.	Implementation of Tree/Crop compensation (amount paid)	Consultation with affected parties – once in a quarter	POWERGRID	Prior to construction	Compensation provided as per POWERGRID's procedure for tree/crop compensation
Inadequate siting of borrow areas	Loss of land values	Existing borrow sites will be used to source aggregates, therefore, no need to develop	Contract clauses	Incorporating good construction management	POWERGRID (Contractor through	Construction period	Complied/ Being Complied

Project activity /stage	Potential impact	Proposed mitigation measure	Parameter to be monitored	Measurement & frequency	Institutional responsibility	Implementation schedule	Compliance Status
		new sources of aggregates		practices – once for each site	contract provisions)		
Health and safety	Injury and sickness of workers and members of the public	Contract provisions specifying minimum requirements for construction camps	Contract clauses (number of incidents and total lost-work days caused by injuries and sickness)	Contract clauses compliance – once every quarter	POWERGRID (Contractor through contract provisions as per Sec-II, 2.2 (v,vii,viii) and also Safety precautions in spe. contract Condition 43.2)	Construction period	Complied/ Being Complied
		Contractor to prepare and implement a health and safety plan.					
		Contractor to arrange for health and safety training sessions					
Inadequate construction stage monitoring	Likely to maximise damages	Training of POWERGRID environmental monitoring personnel	Training schedules	Number of programs attended by each person – once a year	POWERGRID	Routinely throughout construction period	
		Implementation of effective environmental monitoring and reporting system using checklist of all contractual environmental requirements	Respective contract checklists and remedial actions taken thereof.	Submission of duly completed checklists of all contracts for each site - once			
		Appropriate contract clauses to ensure satisfactory implementation of contractual environmental mitigation measures.	Compliance report related to environmental aspects for the contract	Submission of duly completed compliance report for each contract - once			
<b>Operation and Maintenance</b>							
Location of transmission towers and transmission line alignment	Exposure to safety related risks	Setback of dwellings to overhead line route designed in accordance with permitted level of power frequency and the regulation of supervision	Compliance with setback distances (“as-built” diagrams)	Setback distances to nearest houses – once in quarter	POWERGRID	During operations	

Project activity /stage	Potential impact	Proposed mitigation measure	Parameter to be monitored	Measurement & frequency	Institutional responsibility	Implementation schedule	Compliance Status
and design		at sites.					
Equipment submerged under flood	Contamination of receptors (land, water)	Equipment installed above the high flood level (HFL) by raising the foundation pad.	Substation design to account for HFL ("as-built" diagrams)	Base height as per flood design - once	POWERGRID	During operations	
Oil spillage	Contamination of land/nearby water bodies	Substation transformers located within secure and impervious sump areas with a storage capacity of at least 100% of the capacity of oil in transformers and associated reserve tanks.	Substation bunding (Oil sump) ("as-built" diagrams)	Bunding (Oil sump) capacity and permeability - once	POWERGRID	During operations	
Inadequate provision of staff/workers health and safety during operations	Injury and sickness of staff /workers	Careful design using appropriate technologies to minimise hazards	Usage of appropriate technologies (lost work days due to illness and injuries)	Preparedness level for using these technologies in crisis – once each year	POWERGRID	Design and operation	
		Safety awareness raising for staff.	Training/awareness programs and mock drills	Number of programs and percent of staff /workers covered – once each year			
		Preparation of fire emergency action plan and training given to staff on implementing emergency action plan					
		Provide adequate sanitation and water supply facilities	Provision of facilities	Complaints received from staff /workers every 2 weeks			
Electric Shock Hazards	Injury/ mortality to staff and public	Careful design using appropriate technologies to minimise hazards	Usage of appropriate technologies (number of injury incidents, lost work days)	Preparedness level for using these technology in crisis – once a month	POWERGRID	Design and Operation	



Project activity /stage	Potential impact	Proposed mitigation measure	Parameter to be monitored	Measurement & frequency	Institutional responsibility	Implementation schedule	Compliance Status
		Security fences around substations	Maintenance of fences	Report on maintenance – every 2 weeks			
		Barriers to prevent climbing on/dismantling of transmission towers	Maintenance of barriers				
		Appropriate warning signs on facilities	Maintenance of warning signs				
		Electricity safety awareness raising in project areas	Training /awareness programs and mock drills for all concerned parties	Number of programs and percent of total persons covered – once each year			
Operations and maintenance staff skills less than acceptable	Unnecessary environmental losses of various types	Adequate training in O&M to all relevant staff of substations & transmission line maintenance crews.	Training/awareness programs and mock drills for all relevant staff	Number of programs and percent of staff covered – once each year	POWERGRID	Operation	
		Preparation and training in the use of O&M manuals and standard operating practices.					
Inadequate periodic environmental monitoring.	Diminished ecological and social values.	Power Grid staff to receive training in environmental monitoring of project operations and maintenance activities.	Training/awareness programs and mock drills for all relevant staff	Number of programs and percent of staff covered – once each year	POWERGRID	Operation	
Equipment specifications and design parameters	Release of chemicals and gases in receptors (air, water, land)	Processes, equipment and systems using cholofluorocarbons (CFCs), including halon, should be phased out and to be disposed of in a manner consistent with the requirements of the Govt.	Process, equipment and system design	Phase out schedule to be prepared in case still in use – once in a quarter	POWERGRID	Operations	

<b>Project activity /stage</b>	<b>Potential impact</b>	<b>Proposed mitigation measure</b>	<b>Parameter to be monitored</b>	<b>Measurement &amp; frequency</b>	<b>Institutional responsibility</b>	<b>Implementation schedule</b>	<b>Compliance Status</b>
Transmission line maintenance	Exposure to electromagnetic interference	Transmission line design to comply with the limits of electromagnetic interference from overhead power lines	Required ground clearance (meters)	Ground clearance - once	POWERGRID	Operations	
Noise related	Nuisance to neighbouring properties	Substations sited and designed to ensure noise will not be a nuisance.	Noise levels (dB(A))	Noise levels at boundary nearest to properties and consultation with affected parties if any - once	POWERGRID	Operations	

## SECTION: 5 APPROACH AND METHODOLOGY ADOPTED FOR MONITORING OF THE PROJECT

Monitoring is a continuous process throughout the Project life cycle starting from site selection to construction and maintenance state. A Project Management Unit (PMU) has been set up headed by Executive Director (Corporate Planning) at headquarters to coordinate and implement all environment and social issues with the assistance of functional department like Environment & Social Management Deptt., Engineering etc. Apart from this, site managers review the progress on daily basis and regular project review meetings held at least on monthly basis, chaired by the Executive Director of the region wherein the environmental aspects of the projects are discussed and remedial measures taken, wherever, required. The exceptions of these meetings will be submitted to the Directors and Chairman & Managing Director (CMD).

POWERGRID has separate monitoring departments which carry out real time monitoring of all parameters of project implementation including the environment and social issues. Such issues are discussed in detail during every quarter in the Project Review Meeting (PRM) Chaired by Director (Project). CMD also takes periodic review of project implementation.

## SECTION: 6 DETAILS OF GRIEVANCE REDRESS COMMITTEE AND COMPLAINT RECEIVED AND ACTION TAKEN

POWERGRID has a well establish Grievance Redressal Mechanism (GRM) inbuilt in the process itself to receive complaints and grievances to facilitate concerns of project affected persons (PAPs). As a regular practice, wherever fresh land acquisition is involved, a committee is formed comprising of POWERGRID officials, representatives of local authorities, PAPs, Gram Panchayat and well-reputed person to address the grievances of the affected persons. However, in the instant project for Kurukshetra terminal station, no such committee is needed since the land area of 116.7 acres acquired is a govt./Panchayat land. In case of Champa terminal station the private land has been acquired with negotiated settlement/consent award (copy of minutes of meeting enclosed as **Annex-3**), Grievance Redressal Committee (GRC) has been constituted with representatives from POWERGRID, Revenue authorities, PAPs and Gram panchayat. Composition of existing Grievance Redressal Committee at Champa substation is as follows-

### Village Taga

S. no.	Nominee's Organization	Name/Designation
1	Representative of local authority	Sub Divisional cum Land acquisition officer, Janjgir Dist-Janjgir-Champa
2	Representative of Gram Panchayat	Sarpanch village Taga, Tehsil-Akaltara,
3	POWERGRID representative (Site)	Shri. R S Gupta, AGM (Champa)
4	Representative of PAPs	1) Shri Shivnandan Yadav 2) Shri Kholbahara

### Village Chorbhatthi

S. no.	Nominee's Organization	Name/Designation
1	Representative of local authority	Sub Divisional cum Land acquisition officer, Pamgarh, Dist-Janjgir-Champa

2	Representative of Gram Panchayat	Sarpanch village Pamgarh, Tehsil-Pamgarh,
3	POWERGRID representative (Site)	Shri. R S Gupta, AGM (Champa)
4	Representative of PAPs	1) Shri Umendram 2) Shri Bhisham

Substation at Orai and Aligarh is not under funding. GRC is not required at both the places as Private land has been purchased on “**Willing Buyer, Willing Seller**” basis on mutually negotiated price.

In case of transmission line, the GRM process is in built in the tree & crop compensation process where affected persons are given a chance to place their grievances after issuance of notice by revenue officials on the basis of assessment of actual damages. Grievances received towards compensation are generally addressed in open forum and in the presence of many witnesses. Process of spot verification and random checking by the district collector also provides forum for raising the grievance towards any irregularity/complaint. Apart from this POWERGRID officials also listen to the complaints of affected farmers and the same are forwarded to revenue official for doing the needful and, if required POWERGRID takes necessary action to mitigate the concern of the affected.

## **SECTION: 7 CONCLUSION**

It may be noted above that all the possible measures has taken to avoid/minimize the impact of land acquisition. As for Champa Substation, out of 262.27 acre land, 158 acre land is govt land and 104.27 acre private land was acquired from 258 land owners. Land compensation given at Rs. 10 Lakhs/ acre as per Aadarsh Punarvaas Neeti of Govt of Chhattisgarh and additional compensation of Rs. 10 Lakhs/ acre (Rs. 7 Lakhs towards land compensation enhancement, 3 Lakhs towards one time settlement in lieu of employment) for including Rehabilitation Assistance and cost for job paid as per demand/agreement.

For Kurukshetra Substation, 116.7 acre govt. land was secured by State Govt. and possession was taken on 17.10.14. Since land was govt. owned encroachment free land there were no PAPs involved. Hence, no RAP was required.

It is evident from above that mostly govt land was selected for construction of substation. Private land was acquired for Champa Substation, but adequate compensation have been paid to land owners.

800kV Champa- Kurukshetra transmission line has length of approximately 1286.7 KM with around 3220 towers location. During the construction in different phases i. e. foundation, erection, stringing of line we have paid the tree/crop compensation to the tune of Rs. 6234.63 lakh for 4515.67 ha. of affected land area.

For Orai- Aligarh , Orai-orai, and LILO of Agra- meerut and LILO Kanpur-Jhatikara lines in total of 1035.38 ha. of affected land area Rs. 858.44 lakhs paid towards tree/crop compensation.

**R.K.SRIVASTAVA**  
**Addl. General Manager (ESMD)**

### HEALTH CHECK UP CAMP AT CHAMPA



**COMMUNITY DEVELOPMENT WORK AT KURUKSHETRA SUBSTATION**



**CONSTRUCTION OF INTERLOCKING PATH WITHIN THE VILLAGE**



**CONSTRUCTION OF SHED AT SHAMSHAN GHAT**



**BOUNDRYWALL & BARAMDA OF SHAMSHAN GHAT**



**CONSTRUCTION OF COMMUNITY CENTRE**

**CONSTRUCTION OF ILPB PAVEMENT IN RAJIV GANDHI SEWA KENDRA**





HARYANA VIDYUT PRASARAN NIGAM LIMITED  
 (A Govt. of Haryana Undertaking)  
 Chief Engineer, Planning, Panchkula  
 Phone 0172-2584338, Fax 0172-2584415  
 Email: Planning\_hvpnl@yahoo.com

To

The Manager T/L,  
 PGCIL, 400 kV substation Abdullapur  
 Village Bhambholi, Jagadhari - Ambala Road  
 District Yamuna Nagar (Haryana)

Memo No Ch-7/HSS-357

Dated 29/07/2011

Subject: Acquisition of land for construction of 800 kV substation at Kurukshetra by PGCIL.

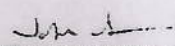
Please refer to Sub-Divisional Officer (Civil)-cum-Land Acquisition Collector, Indri District Karnal office memo no. 387/MC dated 18.07.2011 addressed to FC&PS, GoH Power Deptt. with a copy to your office regarding Notification u/s 4 of the Land Acquisition Act 1894 for acquisition of 173.38 acres of land of village Bhadson, Tehsil Indri, District Karnal.

It appears that land requirement is on higher side. The justification for acquiring 173.38 acre fertile land may be supplied alongwith applicable guidelines. PGCIL may also suggest the measures by which the land requirement can be reduced by adopting GIS Technology/ Vertical configuration etc

It is also intimated that the proposed site is about 40-50 km of Deenbandhu Chhotu Ram Thermal Power Plant (DCRTPP), Yamuna Nagar. Haryana has already created 220 kV substations at Salempur and Unispur (Nilokheri) for utilization of power of DCRTPP. These substations are very close to the proposed site of subject cited substation. Additional 3<sup>rd</sup> generating unit of 1x660 MW at DCRTPP has already been planned. This additional power will be utilized to meet the load requirement in Kurukshetra and Penowa area.

It has been decided in 28<sup>th</sup> meeting of the standing committee on power system planning of northern region held on 23.02.2010 that 2x500 MVA, 400/220 kV transformers are planned to be installed at proposed 800 kV substation at Kurukshetra for use of Haryana. It will be difficult to evacuate power as the load of nearby area has already been planned to be fed from DCRTPP, Yamuna Nagar.

In view of above it is requested to change the site, if possible, for creation of proposed 800 kV substation.

  
 Chief Engineer/ Planning,  
 HVPNL, Panchkula

POWER GRID CORPORATION OF INDIA LIMITED  
REGIONAL ENGINEERING SERVICES  
Northern Region - II, Jammu



INTER OFFICE MEMO

From: AGM (Engg/FQA)  
NR-II, Jammu.

To: GM(HVDC), CC Gurgaon

CC: 1) ED, NR-II For kind info.  
2) GM (Projects)

Ref No : NJM/Engg/SS-30/2011/ 709  
Dated : 03.08.2011

Subject: Land acquisition for 800kV HVDC Terminal Station near kurukshetra associated with IPP's in Chattisgarh (ADB funded project).

Enclosed please find herewith a letter (reference no: Ch-7/HSS-367 dated 29.07.2011) from Chief Engineer/ planning, HVPNL on subject matter. In this context it is intimated that the case for notification under section 4 of Land Acquisition Act, 1894 for acquisition of 173.38 acres of Land for subject Station in Village Bhadson, Tehsil Indri, District Karnal was got processed through SDO (Civil) cum LAC, Tehsil Indri, district Karnal and forwarded to FC& PS, Power deptt., Government of Haryana.. Out of these 173.38 acres, major chunk of approx. 150 acres belongs to village Panchayat and is lying vacant. Only 25 to 30 acres of land belongs to farmers and is being cultivated.

However, as per aforementioned letter received from CE/ Palnning, HVPNL has sought clarification on certain issues before case for notification under section 4 can be forwarded to Government of Haryana. It was intimated to CE/Planning, HVPNL that that the land being acquired is the bare minimum and with Technology enhancement additional land for earth electrode is no more being acquired. A copy of layout of HVDC Terminal Station was also provided to CE/ Planning, HVPNL. However, CE/ Planning, HVPNL is still not satisfied and asked for further Technical clarification/ justification. It is therefore requested that suitable Technical justification/ inputs may be forwarded through return fax so that a suitable reply can be forwarded to CE/ Planning, HVPNL from this end.

Matter URGENT

Encl: As above

Ashwani K. Srivastava  
(A. K. Srivastava) 03



# पावर ग्रिड कारपोरेशन ऑफ इंडिया लिमिटेड

भारत सरकार का उद्यम

## POWER GRID CORPORATION OF INDIA LIMITED

(A Government of India Enterprise)



पावरग्रिड

केंद्रीय कार्यालय: इंदिराप्रस्थ, नई दिल्ली-110001  
Corporate Office: "Saudamini", Plot No. 1, Sector-29, Gurgaon-122 002, Haryana  
Tel: 2571700 Fax: 2571760 2571761  
Registered Office: "Saudamini", Plot No. 1, Sector-29, Gurgaon-122 002, Haryana  
Tel: 2571700 Fax: 2571760 2571761

संख्या/Ref. Number

C/ENG/SEF/N/NR-PLG

Dated 12/08/2011

Ms Jyoti Arora, IAS  
Managing Director,  
Haryana Vidyut Prasaran Nigam,  
Shakti Bhawan, Sector-6,  
Panchkula 134 109

Subject: Land for HVDC Terminal Station at Kurukshetra

Madam,

This is with reference to the discussions undersigned had with you in regard to setting up of HVDC terminal station at Kurukshetra of Champa – Kurukshetra HVDC Bipole line. This + 800 kV Champa – Kurukshetra HVDC bipole line shall be developed in two phases with an ultimate capacity of 6000 MW. Kurukshetra terminal station would consist of 2 nos. of HVDC bioples each having a capacity of 3000 MW and a 400 kV substation which is required for dispersal of power. Accordingly the land requirement of 173 acres was worked out. However as suggested by you, we have reviewed the design of the station and now we are considering 400 kV GIS station in place of conventional Air Insulated substation. This would reduce the requirement of land to about 110 acres.

It is to mention that Champa – Kurukshetra HVDC line has been planned to bring power from various generating stations in Chattisgarh, being pooled at Champa pooling station to Kurukshetra. Injection of 6000 MW of power would provide undisturbed reliable power supply at the doorstep of Haryana, which is equivalent to setting up of a pollution free 6000 MW power generating station in Haryana. The HVDC line would provide controlled power flow resulting into improvement of grid stability & reliability of power in Haryana and nearby regions as well as reduction of transmission losses. From the above it may be appreciated that Champa – Kurukshetra HVDC bipole would be of great help to the state in long term perspective.

Further, it is to inform that we are planning to commission the first phase of HVDC bipole by 2014-15, and keeping in view the tight schedule for large quantum of works involved we have already started tendering activities. It is requested to kindly extend necessary support in obtaining acquisition of about 110 acres of land at in Kurukshetra area. In this regard if desired, we can come to your office to discuss the details and other concerned officers.

Thanking you

Yours faithfully

ED (SIS) T/L

(I S Jha)  
Director (Projects)

# पावर ग्रिड कारपोरेशन ऑफ इण्डिया लिमिटेड

(भारत सरकार का उद्यम)

कुदुदण्ड, बिलासपुर (छत्तीसगढ़)

## नोटिस

(दिव्य विद्युत अधिनियम 2003 (धारा 68 एवं 164 : भारतीय तार अधिनियम 1885 के भाग- III के साथ पठित) और विद्युत नियमावली, 1956)

नोटिस क्रमांक : 1345

78/0 Enu

बुक क्रमांक : 17

प्रति,

सुनेन्द्र जायसवाल श्री विजयराज जायसवाल

पत्नी

प्रिय महोदय/महोदया,

विद्युत अधिनियम 2003 की धारा 164 के अंतर्गत पारित आदेश दिनांक 24.12.2003, जो भारतीय राजस्व में प्रकाशित है, द्वारा केन्द्र सरकार ने पावर ग्रिड कारपोरेशन ऑफ इण्डिया लिमिटेड (भारत सरकार का उद्यम) को स्थापित या अनुरक्षित विद्युत लाइन अथवा विद्युत संचरण के लिए स्थापित या अनुरक्षित की जाने वाली विद्युत लाइन अथवा दूरभाष या तार द्वारा संसूचना के योजनार्थ, जो कार्यों के उचित समन्वय हेतु आवश्यक हो, के संबंध में भारतीय तार अधिनियम 1885 के भाग-III के अंतर्गत "तार अधिकारी" हेतु निहित समस्त शक्तियों के प्रयोग हेतु प्राधिकृत किया है।

एतद् द्वारा नोटिस दी जाती है कि ..... से ..... तक 800 के.व्ही.डी.सी. बाइपोल चांपा-कुरुक्षेत्र पारेषण लाइन, संचरण लाइन आपकी निम्नलिखित संपत्ति से गुजरेगी, उक्त संचरण लाइन के निर्माण/उत्थान के दौरान हालांकि इस बाबत अत्यंत सावधानी बरती जाएगी कि वृक्ष (क्षों)/ फसल (लों) को यथा संभव कम से कम क्षति पहुँचे, फिर भी कुछ न्यूनतम अपरिहार्य क्षति होने की संभावना है, इस प्रकार गिराए गए/काटे गए वृक्ष (क्षों) और/या फसल (लों) को आपको सौंप दिया जाएगा। अतः आपसे अनुरोध है कि इन्हें प्राप्त करने के लिए आप व्यक्तिगत रूप से उपस्थित रहें, गिराए गए वृक्ष (क्षों) एवं वास्तविक रूप से क्षतिग्रस्त फसल (लों) के उत्पाद हेतु आपको एक्जिक्यूटिव मजिस्ट्रेट/राजस्व विभाग या राजस्व समुचित सरकार द्वारा विनिर्दिष्ट किसी अन्य प्राधिकारी द्वारा किए गए मूल्यांकन के अनुसार मुआवजे का भुगतान किया जाएगा।

वृक्ष (क्षों)/फसल (लों) का विवरण :-

1. तहसील का नाम : ..... 2. ग्राम का नाम : .....
3. फील्ड खसरा नम्बर : ..... 4. स्वामी का नाम : .....
5. पता : .....

6. काटे जाने वाले वृक्षों या फसलों का ब्यौरा : .....

पावरग्रिड कारपोरेशन ऑफ इण्डिया लिमिटेड के लिए

और इसकी ओर से

हस्ताक्षर : .....  
नाम : .....  
पदनाम : .....  
दिनांक : .....  
स्थान : .....

नोटिस प्राप्त किया

स्वामी के हस्ताक्षर: .....

नाम : .....  
दिनांक : .....  
स्थान : .....

प्रतिलिपि : तहसीलदार एवं एक्जिक्यूटिव मजिस्ट्रेट ..... आपसे अनुरोध है कि ऊपर लिखित स्वामी के रिकार्ड से स्वामित्व का सत्यापन करते हुए, गिराए गए/काटे गए वृक्ष (क्षों)/फसल (लों) के कारण हुई वास्तविक हानि का मूल्यांकन करने का कष्ट करें।

# पावर ग्रिड कारपोरेशन ऑफ इण्डिया लिमिटेड

(भारत सरकार का उद्यम)

वृक्ष (क्षों) की कटाई/कांट-छांट/फसल(लों) को हटाने के संबंध में

## मुआवजा हेतु प्रमाण-पत्र

नोटिस क्रमांक : 1344

73/05/11

बुक क्रमांक : 17

लोकेशन/सेक्शन सं. .... से ..... तक 800 के.व्ही.एच.व्ही.डी.सी. बाइपोल चांपा-कुरुक्षेत्र पारेषण लाईन

1. मैं/हम/श्री/श्रीमती सुरेन्द्र जयलाल आत्मज/पत्नी विजय शम जयलाल  
 ग्राम चौड़ी तहसील कोय जिला बिजनौर इसके द्वारा कथन और घोषणा करते हैं कि वृक्ष/फसल  
 पील्ड सर्वे नं. .... ग्राम ..... तहसील ..... जिला ..... में स्थित

हे जो मेरे/हमारे स्वामित्व की है, काटे गए/क्षतिग्रस्त हुए वृक्ष/फसल के संबंध में वास्तविक हानि का मुआवजा जिसका मूल्यांकन एक्जिक्यूटिव मजिस्ट्रेट/  
 राजस्व विभाग/समुचित सरकार द्वारा विनिर्दिष्ट प्राधिकारी, द्वारा किया गया है और जो पावर ग्रिड कारपोरेशन द्वारा देय है, मुझे/हमें स्वीकार्य है।

2. यह प्रमाणित किया जाता है कि नीचे उल्लेखित वृक्ष/फसल पावर ग्रिड के इंजीनियर के आदेश से गिराए/क्षतिग्रस्त किए गए थे और उसका कच्चा मुझे/  
 हमें सौंपा जा चुका है।

3. काटे गए वृक्ष/क्षतिग्रस्त की गई फसल का ब्यौरा निम्नानुसार है -

स.क्र.	वृक्ष/फसल का/के प्रकार	वृक्ष(क्षों)/फसल (लों) का ब्यौरा	टिप्पणी
1	ए.ए.ए.	60 x 60 m = 3600 m <sup>2</sup>	5000 रु 1 रु

4. पुनः यह प्रमाणित कर वचन दिया जाता है कि ऊपर लिखित वृक्ष (क्षों)/फसल (लों) के संबंध में कोई भी दावा करता है तो मैं/हम उसके लिए व्यक्तिगत  
 रूप से जिम्मेदार होंगे एवं इस संबंध में यदि पावर ग्रिड को कोई हानि होती है तो मैं/हम उसकी क्षतिपूर्ति करेंगे।

5. यह भी विशेष रूप से घोषित किया जाता है कि ऊपर पैरा-3 में दर्शाए गये/गई वृक्ष (क्षों)/ फसल(लों) की हानि/क्षति के अतिरिक्त मुझे/हमें और कोई  
 हानि या क्षति नहीं हुई है।

पावरग्रिड कारपोरेशन ऑफ इण्डिया लिमिटेड की ओर से

हस्ताक्षर : [Signature]

नाम : .....

पदनाम : .....

दिनांक : .....

[Signature]  
 (स्वामी के हस्ताक्षर)

(.....)

नाम : .....

दिनांक : .....

स्थान : .....

जिला - बिलासपुर (छ.ग.)

कोटा

कार्यालय तहसीलदार

पावरगिड का फॉर्म - प.क्षे.पा.प्र.-1/बिला./मुआ./

पटवारी हल्का नं. - 22

800 किलो वोल्ट वांपा - कुक्षेत्र प.क्षे. संवर्ण पथ के निर्माण कार्य के दौरान हुए क्षतिग्रस्त फसल की मुआवजा जानकारी

क्रम संख्या	मुआवजा फॉर्म क्रमांक	लोकेशन	किया गया कार्य	कृषक का नाम / पिता पति का नाम	ग्राम	फसल का नाम	क्षतिग्रस्त रकबा (वर्ग मी.)	क्षतिग्रस्त रकबा (एकड़)	औसत पैदावार प्रति एकड़ (क्वि.)	कुल क्षतिग्रस्त फसल (क्वि.)	कीमत (रु प्रति क्वि.)	मुआवजा राशि (रु)
1	13/1121	72/1	ईत्कान कार्य	संतोष कुमार तंवर	पोडी	धान	6700	1.66	18.00	29.88	1660.00	496601.00
2	17/1343	73/0	ईत्कान कार्य	नरेन्द्र जायसवाल पिता तिलक राम जायसवाल	पोडी	धान	4500	1.11	18.00	19.98	1660.00	33167.00
3	17/1344	73/0	ईत्कान कार्य	सुरेन्द्र जायसवाल पिता तिलक राम जायसवाल	पोडी	धान	3600	0.89	18.00	16.02	1660.00	26593.00
4	17/1345	73/0	ईत्कान कार्य	गुलाब चंद पिता रामशुलन जायसवाल	पोडी	धान	2200	0.54	18.00	9.72	1660.00	16135.00
5	14/1165	72/1	ईत्कान कार्य	धनेश्वर प्रसाद बंजारे पिता रामप्रसाद बंजारे	पोडी	धान	1050	0.26	18.00	4.68	1660.00	7769.00
6	14/1167	72/1	ईत्कान कार्य	अर्जुन सिंह पिता त्रिभुवन सिंह	पोडी	धान	1200	0.30	18.00	5.40	1660.00	8964.00
7	14/1166	72/1	ईत्कान कार्य	रामशंकर बंजारे पिता धनोनाम	पोडी	धान	1050	0.26	18.00	4.68	1660.00	7769.00
8	20/1463	73/0	ईत्कान कार्य	प्रदीप कुमार पिता देवकिन्द प्रसाद	पोडी	धान	1200	0.30	18.00	5.40	1660.00	8964.00
9	20/1457	73/0	ईत्कान कार्य	रामबहादुर, पिता शंकरनाथ गोत्रनाथ	पोडी	धान	1400	0.35	18.00	6.30	1660.00	10458.00
10	20/1462	73/0	ईत्कान कार्य	रामशंकर, पिता शिवनाथ गोत्रनाथ	पोडी	धान	1200	0.30	18.00	5.40	1660.00	8964.00
11	20/1461	73/0	ईत्कान कार्य	शंकरनाथ, पिता शिवनाथ गोत्रनाथ	पोडी	धान	1200	0.30	18.00	5.40	1660.00	8964.00
12	20/1460	73/0	ईत्कान कार्य	धनोनाथ, पिता शिवनाथ गोत्रनाथ	पोडी	धान	1200	0.30	18.00	5.40	1660.00	8964.00
13	20/1459	73/0	ईत्कान कार्य	सुरेन्द्रनाथ, पिता धनोनाथ	पोडी	धान	1050	0.25	18.00	5.40	1660.00	7470.00

सी० आर० एम०  
पटवारी हल्का नंबर - 22

कोटा

रविवर

K. P. Shinde  
Jr. Engineer  
Power Grid,  
Bilaspur

(भारत सरकार का उद्यम)

Book No. 08



SI No. 760

LOC : No./SPAN, .....

दिनांक 20/11/14

में सुरेन्द्र जयसवाल पिता दिलक राव जयसवाल

ग्राम कोरा पावर ग्रिड कार्पोरेशन ऑफ इंडिया लिमिटेड (भारत सरकार का उद्यम)

द्वारा प्रदत्त चेक नम्बर 828653 दिनांक 13/11/14

राशि रु. (अंकों में) 26593/- (शब्दों में रु.) इक्कीस हजार पचास के सिक्के

मा.स. स्वीकार करता हूँ जो कि 800 के.व्ही. एच.व्ही.डी.सी.

घांपा-कुरुक्षेत्र ट्रांसमिशन लाइन निर्माण कार्य के दौरान हुए फसलों/वृक्षों के मुआवजे के रूप में दिया जा रहा

है, तत्पश्चात् मेरा कोई भी दावा शेष नहीं रह जाता एवं यह स्वीकृति पूर्ण एवं अंतिम है। जारी मुआवजा प्रमाण

पत्र क्रमांक 1344 बुक नं. 17

गवाह :-

प्राप्तकर्ता

1.

हस्ताक्षर [Signature]

2.

नाम .....

दिनांक .....

प्रमाणित किया जाता है कि उपरोक्त चेक मेरे द्वारा श्री सुरेन्द्र जयसवाल

पिता दिलक राव जयसवाल ग्राम कोरा को गवाह के समक्ष प्रदान किया गया।

हस्ताक्षर [Signature]

नाम K. R. Shinde

पदनाम JE

कर्मचारी संख्या .....

दिनांक 28.4.2012 को पॉवर ग्रिड कार्पोरेशन आफ इंडिया लिमिटेड एवं ग्राम तागा के ग्रामवासियों द्वारा भूमि अर्जन के संबंध में मुआवजा दर निर्धारण के संबंध में बैठक की कार्यवाही विवरण

दिनांक 28.4.2012 को चाम्पा 765 के.वी.सबस्टेशन एवं एच.वी.डी.सी.की निजी जमीन अधिग्रहण हेतु वन विभाग अकलतरा जिला-जांजगीर-चाम्पा के विश्राम गृह में माननीय विधायक श्री सौरभ सिंह विधान सभा क्षेत्र अकलतरा की मौजूदगी में ग्राम तागा के भू-विस्थापितों के साथ बैठक आयोजित की गई बैठक में निम्नलिखित अधिकारी/कर्मचारी एवं ग्रामीणजन उपस्थित थे :-

स्थानीय प्रशासन	पावर ग्रिड कार्पोरेशन	प्रभावित काश्तकार
1.श्री एम0एल0सिरदार अपर कलेक्टर जांजगीर-चाम्पा	1.श्री ए0के0हान्डा उपमहाप्रबंधक नागपुर	संलग्न सूची अनुसार
2.श्री एस0के0तिवारी अनुविभागीय अधिकारी राजस्व जांजगीर	2.श्री नवीन श्रीवास्तव उपमहाप्रबंधक बिलासपु	
3.श्री आर0एकका अनुविभागीय अधिकारी राजस्व पामगढ	3.श्री एस0के0श्रीवास्तव मुख्य प्रबंधक नागपुर	
	4.श्री मधुसुदनराव मुख्य प्रबंधक वित्त नागपुर	
	5.श्री रजनीश तिवारी मुख्य प्रबंधक बिलासपुर	

1. सर्व प्रथम भू-विस्थापितों द्वारा भूमि के एवज में 20.00 लाख रुपये प्रति एकड़ मुआवजा राशि तथा प्रत्येक प्रभावित परिवार के एक सदस्य को पॉवर ग्रिड में नौकरी देने की माँग की गई।

2. पॉवर ग्रिड द्वारा स्पष्ट किया गया कि उनकी नीति के अनुसार विस्थापितों को नौकरी देने का कोई प्रावधान नहीं है। तथा प्रभावित काश्तकारों की माँग को देखते हुए पॉवर ग्रिड द्वारा शासन के सिंचित भूमि के निर्धारित मुआवजा राशि 10.00 प्रति एकड़ पर 40 प्रतिशत प्रति एकड़ अतिरिक्त दर से मुआवजा देने का प्रस्ताव रखा गया।

*[Signature]*  
28/4/12

*[Signature]*  
28/4/12

*[Signature]*  
28/4/12

*[Signature]*  
अनुविभागीय अधिकारी (रा.)  
पामगढ

3. भू-अर्जन से प्रभावित परिवार के एक सदस्य को अथवा नामित व्यक्ति को नौकरी देने की पुनः माँग की गई।

4. पॉवर ग्रिड द्वारा पुनः स्पष्ट किया गया पॉवर ग्रिड की नीतियों तथा कार्य के स्वरूप के अनुसार नौकरी देना संभव नहीं है अतः इस परिस्थितियों में प्रभावित काशतकारों की माँग को देखते हुए नौकरी के एवज में एक मुश्त अंतिम मुआवजा के स्वरूप में 3.00 लाख रुपये प्रति एकड़ की दर से अतिरिक्त राशि मुआवजा के रूप में प्रदान की जा सकती है।

5. इसके बाद भू-अर्जन से प्रभावित काशतकारों द्वारा विचार विमर्श करने के बाद यह बताया गया कि भूमि की मुआवजा राशि 10.00 लाख के अतिरिक्त 4.00 लाख प्रति एकड़ (कुल 14.00 लाख प्रति एकड़) की दर पर सहमति व्यक्त की गई परन्तु नौकरी हेतु अगर पॉवर ग्रिड नौकरी की व्यवस्था नहीं कर सकता की स्थिति में अन्य पॉवर प्लांट में नौकरी दिलायी जाने की माँग की गई।

इस पर पॉवर ग्रिड कार्पोरेशन द्वारा स्पष्ट किया गया कि नौकरी दिलाने पर कोई आश्वासन नहीं दिया जा सकता। अतः पॉवर ग्रिड द्वारा कुल राशि 14.00 लाख रुपये के अतिरिक्त 3.00 लाख रुपये नौकरी के एवज में एक मुश्त अंतिम मुआवजे के रूप में स्वीकार किया जावे।

चर्चा पश्चात बैठक समाप्त की गई।

अपर कलेक्टर  
जॉजपीर-बापा (उ.ग.)

28/4/2012

28/4/12

28/4/12

28/4/2012

अनुविभागीय अधिकारी (रा.)  
जॉजपीर

28/4/12

28/4/12

अनुविभागीय अधिकारी (रा.)  
पायगढ

कार्यालय कलेक्टर ( भू-अर्जन शाखा )जिला - जंजगीर-चांपा( छ.ग.)

MLD M - 26/12/12

!! ज्ञापन !!

क्रमांक क/ भू-अर्जन/2013 779

जांजगीर दिनांक 31/01/2013

प्रति,

✓ महाप्रबंधक,

पावरग्रिड कारपोरेशन ऑफ इंडिया लिमिटेड,

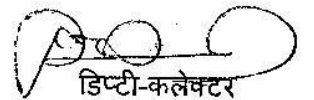
जांजगीर-चांपा

विषय:- 765/400 के.व्ही. सब स्टेशन हेतु ग्राम- तागा में निजि भूमि अधिग्रहण हेतु ली गयी बैठक दिनांक 26/12/2012 के संबंध में ।

विषयांतर्गत लेख है कि छ.ग. शासन ऊर्जा विभाग मंत्रालय रायपुर के पत्र क्रमांक 834/13/ऊ.वि./पी.जी.सी.एल./2011 रायपुर दिनांक 07.04.2011 के कार्यवाही विवरण में दिए गए निर्देशानुसार ग्राम- तागा एवं चोरभट्टी के 765/400 के.व्ही. सब स्टेशन के लिए निजि भूमि अर्जन हेतु अतिरिक्त मुआवजा निर्धारण के संबंध में दि. 28.04.2012 को हुई बैठक में पावरग्रिड व शासन द्वारा प्रस्तावित नौकरी के एवज में रु. 3.00 लाख प्रति एकड़ के मुआवजे पर काश्तकारों ने पूर्ण सहमती नहीं दी थी तथा इस पर काश्तकारों ने अवार्ड नोटिस न लेते हुए असहमति व्यक्त की। अतः ग्राम-तागा पंचायत भवन में दिनांक 26.12.2012 को भूमि अवार्ड के पश्चात चेक वितरण हेतु अनुविभागीय अधिकारी(रा.),जांजगीर, सरपंच ग्राम-तागा तथा अन्य ग्रामवासियों के साथ ली गयी बैठक में काश्तकारों द्वारा नौकरी के एवज में रु. 6.00 लाख प्रति एकड़ मुआवजा मिलने पर अपनी सहमति दी है, बैठक की कार्यवाही विवरण संलग्न है। कार्यवाही विवरण के अनुसार नौकरी के एवज में बढ़ाई गयी मुआवजा राशि वितरण की व्यवस्था करें।

(कलेक्टर द्वारा स्वीकृत)

सहपत्र:- उपरोक्तानुसार



डिप्टी-कलेक्टर

हेतु/- कलेक्टर

जांजगीर-चांपा छ.ग.

पृष्ठांकन क्रमांक क/ भू-अर्जन/2013

जांजगीर दिनांक 31/01/2013

प्रतिलिपि :-

सरपंच ग्राम पंचायत तागा तहसील-अकलतरा जिला-जांजगीर-चांपा की ओर ग्राम-तागा के निजि भूमि अर्जन हेतु ली गयी बैठक की कार्यवाही विवरण संलग्न कर सूचनार्थ अग्रेषित।

तहसीलदार अकलतरा : सूचनार्थ ।



डिप्टी-कलेक्टर

हेतु/- कलेक्टर

जांजगीर-चांपा छ.ग.



कार्यालय अनुविभागीय अधिकारी (राजस्व) जांजगीर, जिला-जांजगीर-चांपा (छ.ग.)

// जापन //

क्रमांक/ 3213 /अ.वि.अ./भू-अर्जन/2013

जांजगीर, दिनांक 02/01/2013

प्रति,

कलेक्टर

भू-अर्जन शाखा

जिला : जांजगीर - चांपा (छ.ग.)

अनुविभागीय अधिकारी  
जांजगीर-चांपा (छ.ग.)

- 2 JAN

रीक्षक

कलेक्टर

विषय:- ग्राम तागा प.ह.नं.18 तहसील-अकलतरा जिला -जांजगीर -चांपा (छ.ग.) के भू-अर्जन प्रकरण क्रमांक19/अ82/2010-2011 पावर ग्रिड कारपोरेशन ऑफ इंडिया लिमिटेड 765/400 के. वी. उपकेंद्र निर्माण की अतिरिक्त मुआवजा राशि के निर्धारण के संबंध में।


विषयांतर्गत लेख है कि ग्राम तागा प.ह.नं. 18 तह -अकलतरा जिला -जांजगीर -चांपा (छ.ग.) के अंतर्गत भू-अर्जन प्रकरण क्रमांक 19/अ82/2010-2011 की अर्जित निजी भूमि की अवार्ड आयुक्त बिलासपुर संभाग बिलासपुर द्वारा अनुमोदित किया गया है।

भू अर्जन प्रकरण के मुआवजा राशि के चेक का वितरण 26.12.12 से प्रारम्भ किया गया । इस संबंध में ज्ञात हो कि चेक वितरण के पूर्व ग्राम तागा के सरपंच कार्यालय मे ग्राम वासियों के साथ चर्चा मे उपरोक्त विषय पर ग्रामवासियों को राजी कर पूर्व मे निर्धारित अतिरिक्त मुआवजा राशि 7.00 लाख प्रति एकड़ को बढ़ाकर 10 लाख रुपये कि मांग ग्राम वासियों द्वारा कि गयी जिसे मान्य कर कार्यवाही विवरण आगे कि कार्यवाही तथा पावर ग्रिड कारपोरेशन ऑफ इंडिया लिमिटेड को निर्देशित करने हेतु आपके कार्यालय मे प्रस्तुत है।

सहपत्र : कार्यवाही विवरण

24 B  
21.1.13

  
22/1/13

  
अनुविभागीय अधिकारी  
(राजस्व)जांजगीर  
जिला-जांजगीर-चांपा (छ.ग.)

दिनांक 26.12.2012 को ग्राम तागा के निजी भूमि काश्तकारों तथा अनुविभागीय अधिकारी जांजगीर, एवं पावरग्रिड कारपोरेशन ऑफ इंडिया लि. के बीच मुआवजा राशी वितरण हेतु हुई चर्चा का विवरण:

दिनांक 26.12.2012 को चांपा 765/400 के.व्ही. उपकेंद्र तथा एच.वी.डी.सी. के लिए अधिग्रहित की जा रही निजी भूमि के मुआवजा राशि के चेक वितरण हेतु ग्राम तागा के सरपंच कार्यालय में अनुविभागीय अधिकारी जांजगीर तथा अन्य अधिकारियों की प्रभावित काश्तकारों के साथ चर्चा हुई। इस संदर्भ में ज्ञात हो कि कमिश्नर कार्यालय बिलासपुर द्वारा दिनांक 30.11.2012 को ग्राम तागा की 82.36 एकड़ निजी भूमि के अनिवार्य अधिग्रहण का अवार्ड पारित किया गया। इसके बाद धारा 12(2) की सूचना ग्रामवासियों को अनुविभागीय अधिकारी जांजगीर तथा तहसीलदार कार्यालय अकलतरा द्वारा भेजी गयी, किन्तु ग्रामवासियों द्वारा इस सूचना को उनकी नौकरी की मांग पूरी होने तक लेने से इंकार किया गया। इस चर्चा में निम्नलिखित अधिकारी/ कर्मचारी उपस्थित थे :

स्थानीय प्रशासन	पावरग्रिड कारपोरेशन	प्रभावित काश्तकार
1. श्री एस. के. तिवारी, अनुविभागीय अधिकारी जांजगीर	श्री आर. एस. गुप्ता, अपर महा-प्रबन्धक	सलग्न सूची अनुसार
2. श्री चंद्रा, तहसीलदार अकलतरा	श्री सी. बी. टोकेकर, उप-प्रबन्धक	
3. श्री के.आर. कोशले थाना इंचार्ज तागा क्षेत्र	श्री आयुष अग्रवाल, अभियंता	
4. सरपंच ग्राम पंचायत तागा		
5. राजस्व निरीक्षक जांजगीर		
6. पटवारी हल्का ग्राम तागा		

1. आज दिनांक 26.12.2012 को मुआवजा राशि के चेक वितरण हेतु अनुविभागीय अधिकारी जांजगीर के समक्ष सभी ग्रामवासियों ने एक मत से अपनी नौकरी की मांग दोहराई तथा मांग पूरी होने तक चेक लेने से इंकार किया। निजी भूमि के काश्तकारों द्वारा दिनांक 28.04.2012 को अकलतरा में हुई बैठक का हवाला देते हुये नौकरी के एवज में दिये जा रहे 3 लाख रुपये प्रति एकड़ के लिए आमसहमति नहीं बन पाने की बात बार बार दोहराई गयी।

26/12/2012  
अनुविभागीय अधिकारी  
जांजगीर

26/12/12  
तहसीलदार  
अकलतरा (छ.प्र.)  
श्री आर. एस. गुप्ता / R.S. Gupta  
अपर महाप्रबन्धक / Addl. G.M.  
पावरग्रिड / POWERGRID  
जांजगीर-चांपा / Janjgir-Champa (C.G.)

होनाई  
सचिव  
ग्राम पंचायत तागा  
जिला पावरग्रिड कारपोरेशन

R.L.  
26-12-12


26/12/12

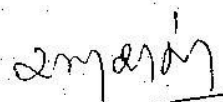
2. अनुविभागीय अधिकारी जांजगीर द्वारा सभी निजी भूमि के काश्तकारों को तरह-तरह से समझाने की कोशिश की गई तथा विस्तृत चर्चा के बाद अधिकांश निजी भूमि काश्तकारों द्वारा नौकरी के एवज में दी जा रही 3 लाख प्रति एकड़ की राशि को बढ़ाकर 6 लाख रुपये प्रति एकड़ करने का प्रस्ताव रखा। यह प्रस्ताव स्वीकार होने पर काश्तकारों द्वारा नौकरी की मांग निरस्त करते हुए मुआवजा राशि के चेक को लेने की बात की।

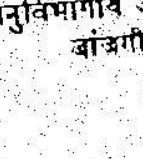
3. विषय की गंभीरता को समझते हुए इस प्रस्ताव को अनुविभागीय अधिकारी जांजगीर द्वारा अपनी सहमति देते हुए पावरग्रिड के अधिकारियों को दिनांक 28.04.2012 में निर्धारित 04 लाख रुपये प्रति एकड़ अतिरिक्त भू-मुआवजा राशि को यथावत रखते हुए रुपये 3 लाख प्रति एकड़ नौकरी के एवज में एक मुश्त भुगतान को बढ़ाकर 6 लाख रुपये प्रति एकड़ (कुल 10 लाख रुपये प्रति एकड़) भुगतान करने हेतु कहा।

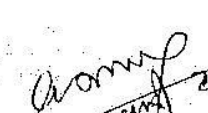
4. इस विषय पर पावरग्रिड अधिकारियों द्वारा वर्तमान में स्वीकृत 07 लाख रुपये प्रति एकड़ के अतिरिक्त मुआवजा राशि का चेक वितरण के लिए उपलब्ध होने की जानकारी दी तथा आज प्रस्तावित अतिरिक्त 03 लाख रुपये प्रति एकड़ की मुआवजा राशि के वितरण में लगभग दो माह का समय लगने की बात कही। साथ ही कार्य शुरू करने में हो रहे विलंब को देखते हुये कार्य को तत्काल शुरुआत करने में निजी भूमि के काश्तकारों द्वारा किसी प्रकार की आपत्ति या असहमति नहीं दर्शाने हेतु आग्रह किया।

5. बैठक में उपस्थित अधिकांश काश्तकारों द्वारा उपरोक्त प्रस्ताव पर अपनी पूर्ण सहमति देते हुए मुआवजा राशि का चेक लेने में अपनी स्वीकृति दी। इसके बाद चेक वितरण की कार्यवाही प्रारम्भ की गई।

  
26/12/12  
अनुविभागीय अधिकारी  
जांजगीर

  
26/12/12  
आर. एस. गुप्ता/R.S. Gupta  
अपर महाप्रबन्धक/Addl. G.M.  
पावरग्रिड/POWERGRID  
जांजगीर-चांपा/Janjgir-Champa (C.G.)

  
R-1  
26/12/12

  
Anam  
22/12/2012

बीराबाई  
28/12/12  
उप महाप्रबन्धक  
जिला जांजगीर-चांपा (C.G.)

46  
16  
76  
(1-10 + 1d. - 4) (14)  
(1-3 + 1d. - 1) (4) (14)

(10+67)  
F

**पॉवर ग्रिड कार्पोरेशन ऑफ इण्डिया लि० के लिए ग्राम तागा में अधिग्रहित भूमि की मुआवजा संबंधी समस्याओं के निराकरण हेतु दिनांक: 15/04/2013 को आहुत बैठक की कार्यवाही विवरण**

आज दिनांक: 15/04/2013 को पॉवर ग्रिड कार्पोरेशन ऑफ इण्डिया लि० के लिए ग्राम तागा में अधिग्रहित भूमि के मुआवजा संबंधी समस्याओं के निराकरण के संबंध में कलेक्टर जांजगीर-चांपा के कक्ष में आहुत की गयी। इस बैठक में निम्नानुसार अधिकारीगण, जनप्रतिनिधि एवं प्रभावित काश्तकार उपस्थित रहे :-

1. माननीय श्री सौरभ सिंह, विधायक, विधान सभा क्षेत्र-अकलतरा,
2. श्री आर० पी० एस० त्यागी, कलेक्टर, जांजगीर-चांपा,
3. श्री आरिफ शेख, पुलिस अधीक्षक, जांजगीर-चांपा,
4. श्री संतोष गुप्ता, अनुविभागीय दण्डाधिकारी, जांजगीर,
5. श्री आर० के० चौहान, महाप्रबंधक (प्रभारी) कुरक्षेत्र, पॉवर ग्रिड कार्पोरेशन ऑफ इण्डिया लि०
6. श्री आर० एस० गुप्ता, महाप्रबंधक पॉवर ग्रिड कार्पोरेशन ऑफ इण्डिया लि० जांजगीर
7. श्री सी० बी० टोकेकर, उप-प्रबंधक, पॉवर ग्रिड कार्पोरेशन ऑफ इण्डिया लि० जांजगीर।
8. ग्राम तागा के प्रभावित काश्तकार क्रमशः- श्री रामविलास कश्यप, श्री संदीप यादव, श्री शिवनंदन यादव, श्री सुखसागर कश्यप, श्री बलभद्र, श्री राजकुमार यादव, श्री जगन्नाथ प्रसाद, श्री रामनारायण भैना, श्री रामगोपाल, श्री सहदेव प्रसाद, श्री मनोज कुमार साहू, श्री संपत साहू, श्री शिवचरण कश्यप एवं श्री पी० के० सिंह नि० तागा।

2. इस महत्वपूर्ण बैठक में सभी उपस्थित व्यक्तियों को माननीय विधायक, अकलतरा एवं कलेक्टर द्वारा पॉवरग्रिड द्वारा बनाए जा रहे सब स्टेशन का महत्व व आवश्यकता को विस्तार से बताया गया तथा उपकेन्द्र के निर्माण में हो रहे विलम्ब से ग्रिड प्रबंधन में होने वाली समस्याओं से भी अवगत कराया गया। प्रभावित काश्तकारों ने निम्नलिखित विन्दुओं पर स्थिति स्पष्ट करने की मांग की गयी :-

1. पॉवरग्रिड कार्पोरेशन लि० के अधिग्रहित भूमि के प्रभावित काश्तकारों के परिवार को निजी उद्योगों की तरह नौकरी दी जायेगी अथवा नहीं।
2. पॉवरग्रिड कार्पोरेशन लि० के लिए अधिग्रहित भूमि की मुआवजा शासन द्वारा निर्धारित दर/मापदण्ड के अनुरूप काश्तकार भूमि देने के लिए सहमत नहीं है अतः मुआवजा राशि की दर बढ़ायी जाये।

3. पॉवरग्रिड कार्पोरेशन लि० द्वारा अधिग्रहित भूमि से अधिक हिस्से पर सीमाएँ तय की जा रही हैं अतः वास्तविक अधिग्रहित भूमि पर ही सीमा रेखा ( बाउण्ड्रीवाल / फेंसिंग वायर ) की कार्यवाही की जाये। पॉवरग्रिड को यदि अतिरिक्त भूमि की आवश्यकता है तो उसका पूरक सूची तैयार कर अधिग्रहण की कार्यवाही की जाये।
  4. वर्तमान में अर्जन की गयी भूमि पर काश्तकारों की फसल लगी हुई है। पॉवरग्रिड तत्काल भूमि रिक्त कराने हेतु कार्यवाही कर रहा है। अतः खेतों पर लगाये गये फसल का अतिरिक्त मुआवजा उन्हें प्रदान की जाये।
  5. पॉवरग्रिड के लिए अर्जित की गयी भूमि में रास्ता भी आ रहा है अतः उसे वैकल्पिक व्यवस्था होते तक बंद नहीं किया जाये।
  6. पॉवरग्रिड कार्पोरेशन द्वारा किये जाने वाले उप केन्द्र निर्माण में स्थानीय लोगों को ही रोजगार उपलब्ध कराये तथा बाहरी व्यक्तियों से कार्य न लिया जाये।
3. प्रभावित काश्तकारों की उपरोक्त समस्याओं पर चर्चा कर पश्चात् बैठक में सर्व सम्मति से निम्नानुसार निर्णय लिये गये :-

1. पॉवरग्रिड के लिए अर्जित भूमि के प्रभावित काश्तकारों को नौकरी देने के संबंध में शासन की ओर से ऐसी कोई प्रावधान नहीं है।

माननीय विधायक द्वारा उपस्थित काश्तकारों को समझाईष दी गई कि वे इसके लिए माननीय उच्च न्यायालय में पुनरीक्षण याचिका ( REVIEW PETITION ) दायर करें और माननीय न्यायालय द्वारा इस संबंध में जो भी निर्णय दिया जायेगा उसका पालन प्रभावित काश्तकार एवं पॉवरग्रिड कार्पोरेशन दोनों पक्ष के लिए बंधनकारी होगा।

2. शासन द्वारा पॉवरग्रिड कार्पोरेशन के लिए अर्जन से अधिग्रहित भूमि के पारित अर्वार्ड के आधार पर मुआवजा दर निर्धारित किया गया है।

काश्तकारों को प्रतिएकड़ राशि—20.00 लाख रुपये मुआवजा राशि देने की मांग की गयी। पॉवरग्रिड कार्पोरेशन लि० के अधिकारी ने प्रभावित काश्तकारों को अवगत कराया कि वे शासन द्वारा नियत राशि 10.00 लाख एवं पॉवरग्रिड द्वारा देय अतिरिक्त राशि—07.00 लाख कुल 17.00 लाख रुपये प्रति

एकड़ के मान से जो भी राशि बनती है उसका चेक वे तत्काल ले लें तथा शेष अतिरिक्त राशि-03.00 लाख रुपये के लिए प्रस्ताव विभाग को भेजा जायेगा तथा इसकी कार्यवाही पूर्ण होने में लगभग तीन माह का समय लगेगा। विभाग से राशि प्राप्त होने पर उक्त शेष राशि का भुगतान भी तत्काल कर दिये जायेंगे।

3. पॉवरग्रिड के लिए आवश्यकतानुसार अर्जन भूमि पर ही सीमा रेखा के लिए फेंसिंग वॉयर की कार्यवाही की जा रही है। यदि किसी काश्तकार को ऐसा लगता है कि अधिग्रहित भूमि से अधिक भूमि पर पॉवरग्रिड कब्जा कर रहा है।

कलेक्टर द्वारा अनुविभागीय अधिकारी, जांजगीर को निर्देशित किया गया कि वे पॉवरग्रिड के लिए अधिग्रहित भूमि का पुनः सीमांकन कर लें और यदि किसी काश्तकार की अधिक भूमि जा रही है तो उसका पुनः पूरक सूची तैयार कर अधिग्रहण की कार्यवाही कर ली जाये।

4. उपकेन्द्र के निर्माण में हो रहे विलम्ब को देखते हुए पॉवरग्रिड अधिग्रहित भूमि को तत्काल अपने कब्जे में ले कर कार्य प्रारंभ करना चाहता है। जबकि अधिग्रहित भूमि पर किसानों की फसल लगी हुई है। वर्तमान में धान की उपज लगभग 22.50 क्विंटल प्रति एकड़ है। शासन का समर्थन मूल्य राशि-1250/- प्रति क्विंटल है। अतः उसी दर के आधार पर काश्तकारों के खड़ी फसल का मुआवजा राशि का आंकलन करते हुए राशि का भुगतान की जाये। पॉवरग्रिड कार्पोरेशन के उपस्थित अधिकारी इस निर्णय से सहमत हुए और तदनुसार ही पॉवरग्रिड प्रभावित किसानों के खड़ी फसल के मुआवजा राशि का आंकलन करते हुए राशि का भुगतान करेंगे।


5. पॉवरग्रिड के लिए अर्जन की गयी भूमि में पड़ने वाले रास्ते को वैकल्पिक व्यवस्था के होते तक बंद नहीं किया जायेगा।
6. पॉवरग्रिड कार्पोरेशन द्वारा किये जाने वाले उप केन्द्र निर्माण में प्रभावित काश्तकारों तथा स्थानीय लोगों को रोजगार मुहैया कराने हेतु पॉवरग्रिड के अधिकारियों से काश्तकारों की मांग पर पॉवरग्रिड के अधिकारियों ने आश्वासन

दिया कि वे स्थानीय लोगों को प्राथमिकता से उपलब्ध कराने तथा बाहरी व्यक्तियों से कार्य न लिये जायेंगे, इस बात का ध्यान रखा जायेगा।

7. **CORPORATE SOCIAL RESPONSIBILITY ( C.S.R. )** के अंतर्गत होने वाले कार्यों का विवरण ग्राम सभा में प्रस्ताव पारित कर कलेक्टर कार्यालय में जमा किया जायेगा, कलेक्टर कार्यालय प्रकरण की जाँच कर पॉवर ग्रिड को C.S.R. कार्यों के लिए निर्देशित करेंगे।
8. सभी प्रभावित काश्तकार पॉवरग्रिड कार्पोरेशन लि० द्वारा कराये जा रहे उपकेन्द्र निर्माण कार्य में कोई गतिरोध उत्पन्न नहीं करेंगे, समझौते के अनुसार वे अधिग्रहित भूमि का कालम-3 (2) में उल्लिखित अनुसार मुआवजा प्राप्त करेंगे। अधिग्रहित भूमि के भीतर मौजूद रास्ते को वैकल्पिक व्यवस्था के होते तक पावरग्रिड द्वारा बंद नहीं किया जायेगा।

—0—


( कलेक्टर द्वारा अनुमोदित )

  
डिप्टी कलेक्टर,  
हेतु-कलेक्टर  
जिला जांजगीर-चांपा (छ०ग०)

जांजगीर, दिनांक: 02 मई, 2013

पृ० क० 6348/भू-अर्जन/2013  
प्रतिलिपि :-

1. माननीय श्री सौरभ सिंह, विधायक, अकलतरा जिला जांजगीर-चांपा की ओर सूचनार्थ प्रेषित।
2. पुलिस अधीक्षक, जांजगीर-चांपा (छ०ग०) की ओर सूचनार्थ प्रेषित।
3. श्री संतोष गुप्ता, अनुविभागीय दण्डाधिकारी, जांजगीर जिला जांजगीर-चांपा की ओर आवश्यक कार्यवाही हेतु प्रेषित।
4.  5. तहसीलदार, अकलतरा जिला जांजगीर-चांपा की ओर पालनार्थ प्रेषित।  
श्री आर० के० चौहान, महाप्रबंधक (प्रभारी) कुरक्षेत्र, पॉवर ग्रिड कार्पोरेशन ऑफ इण्डिया लि० की ओर पालनार्थ प्रेषित।
6. श्री आर० एस० गुप्ता, महाप्रबंधक पॉवर ग्रिड कार्पोरेशन ऑफ इण्डिया लि० जांजगीर की ओर पालनार्थ प्रेषित।
7. श्री सी० बी० टोकेकर, उप-प्रबंधक, पॉवर ग्रिड कार्पोरेशन ऑफ इण्डिया लि० जांजगीर की ओर पालनार्थ प्रेषित।

  
डिप्टी कलेक्टर,  
हेतु-कलेक्टर  
जिला जांजगीर-चांपा (छ०ग०)

12