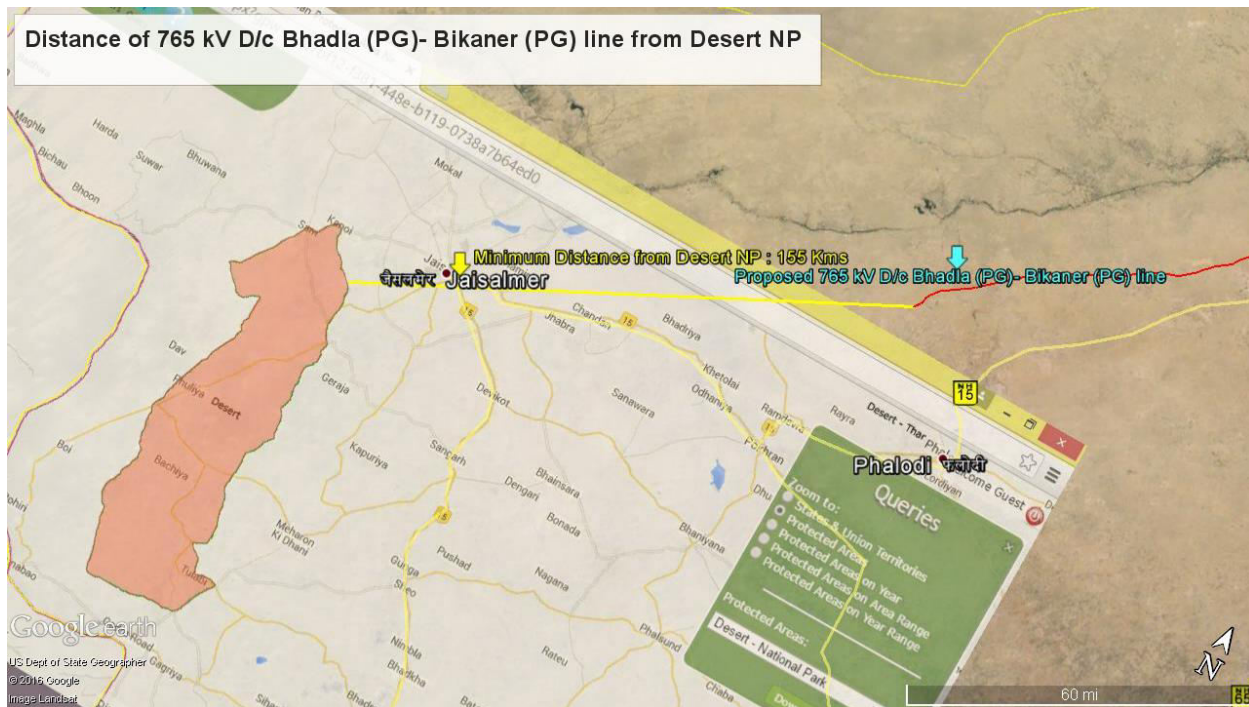
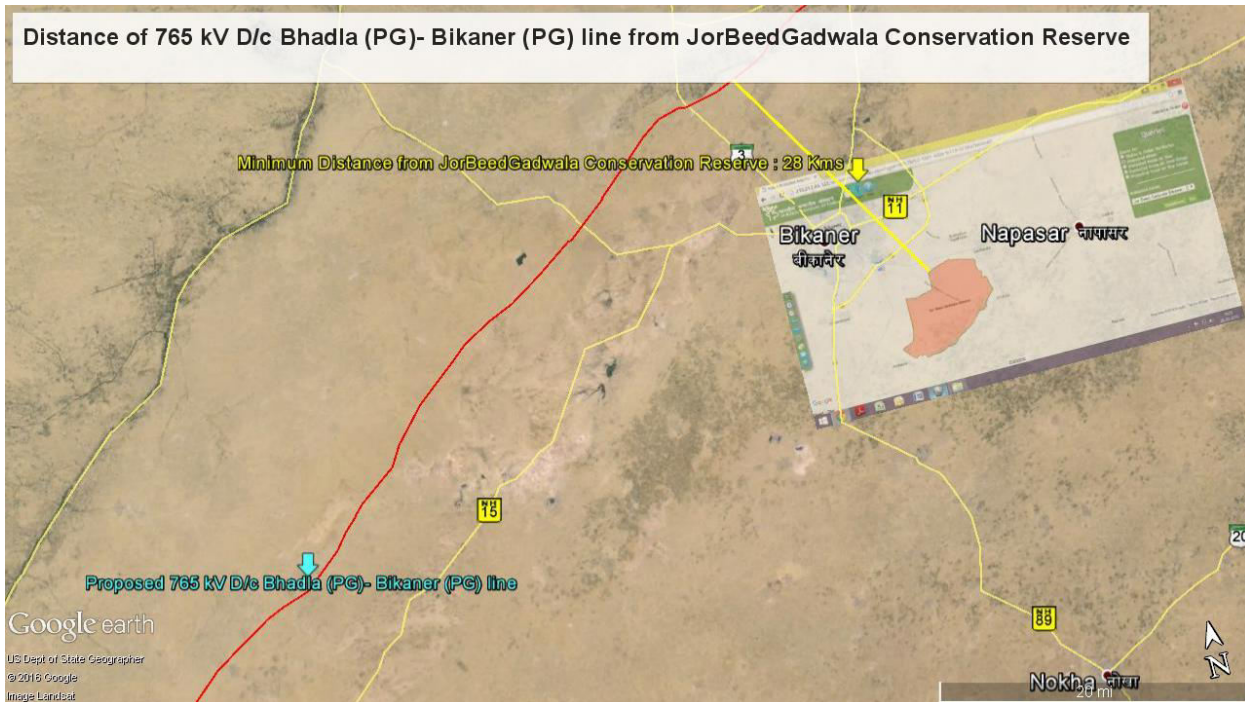
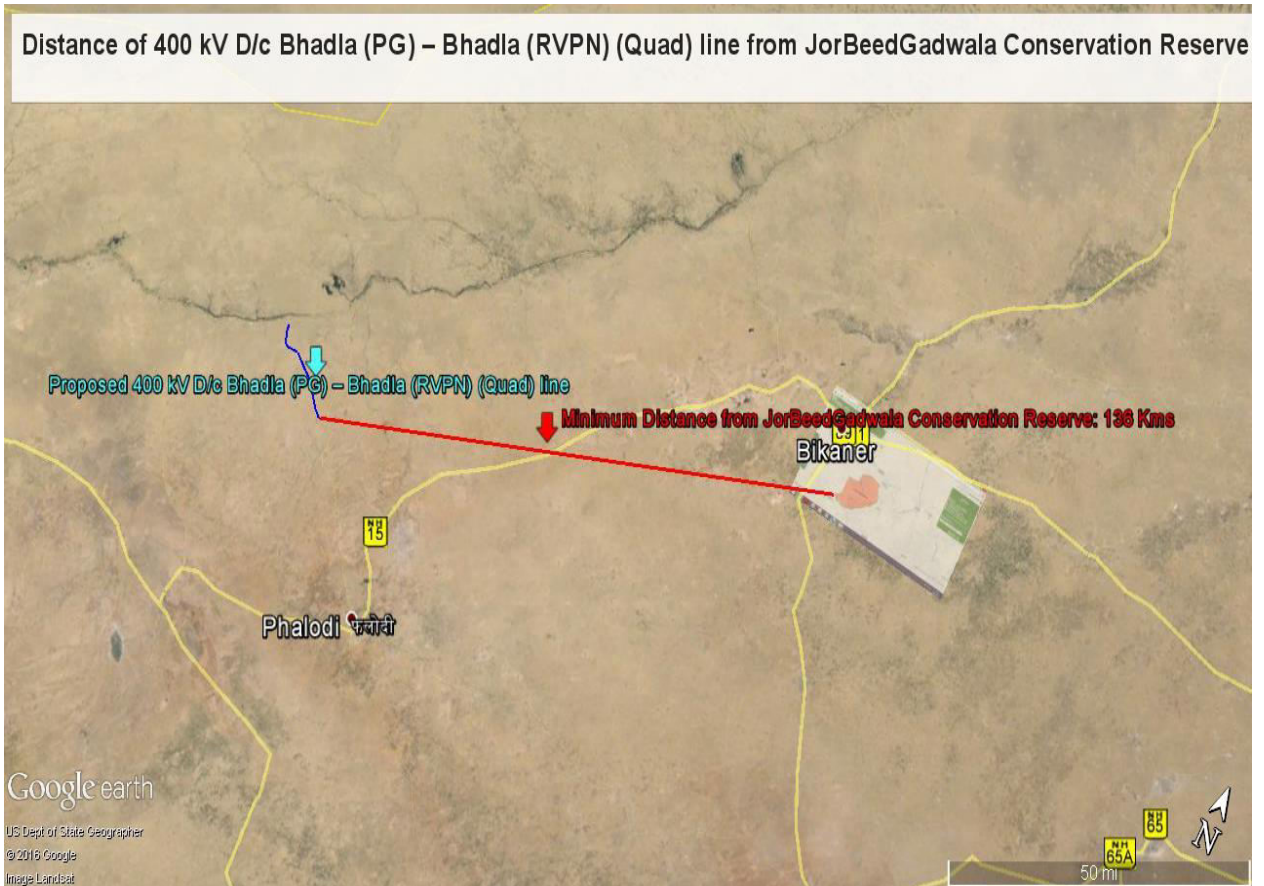
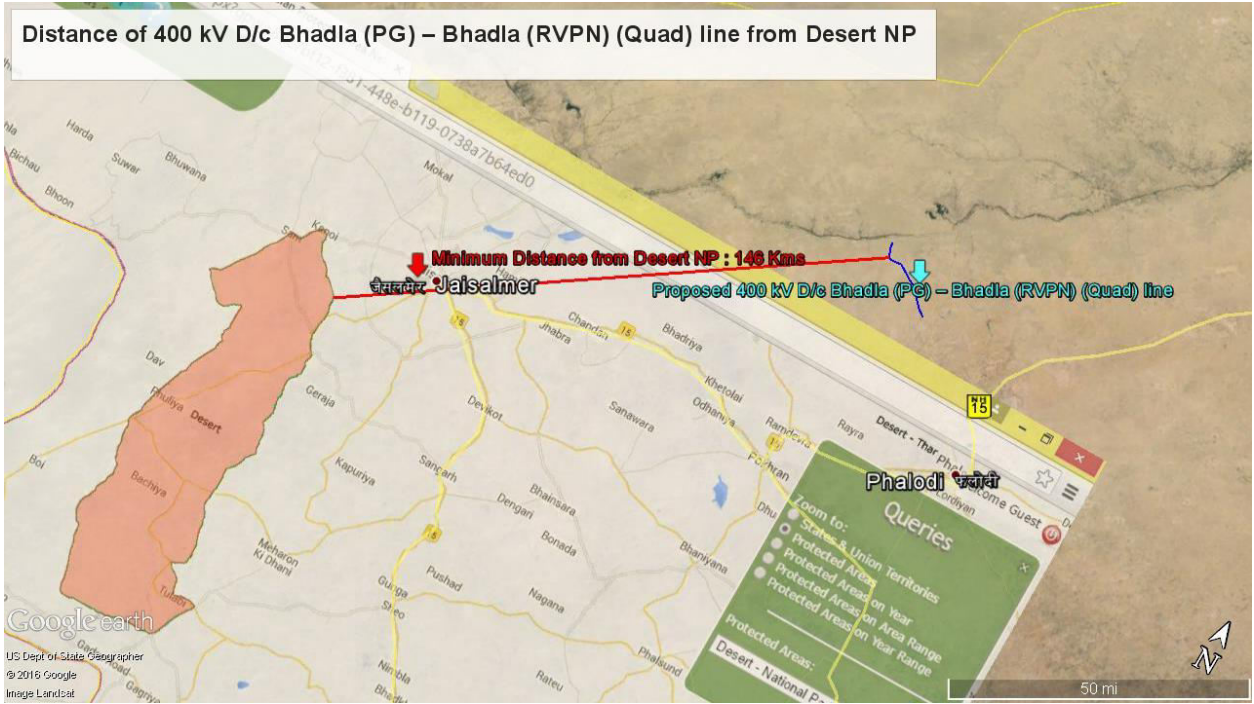


# **APPENDIX-1**

1. 765 kV D/c Bhadla (PG)- Bikaner (PG) line



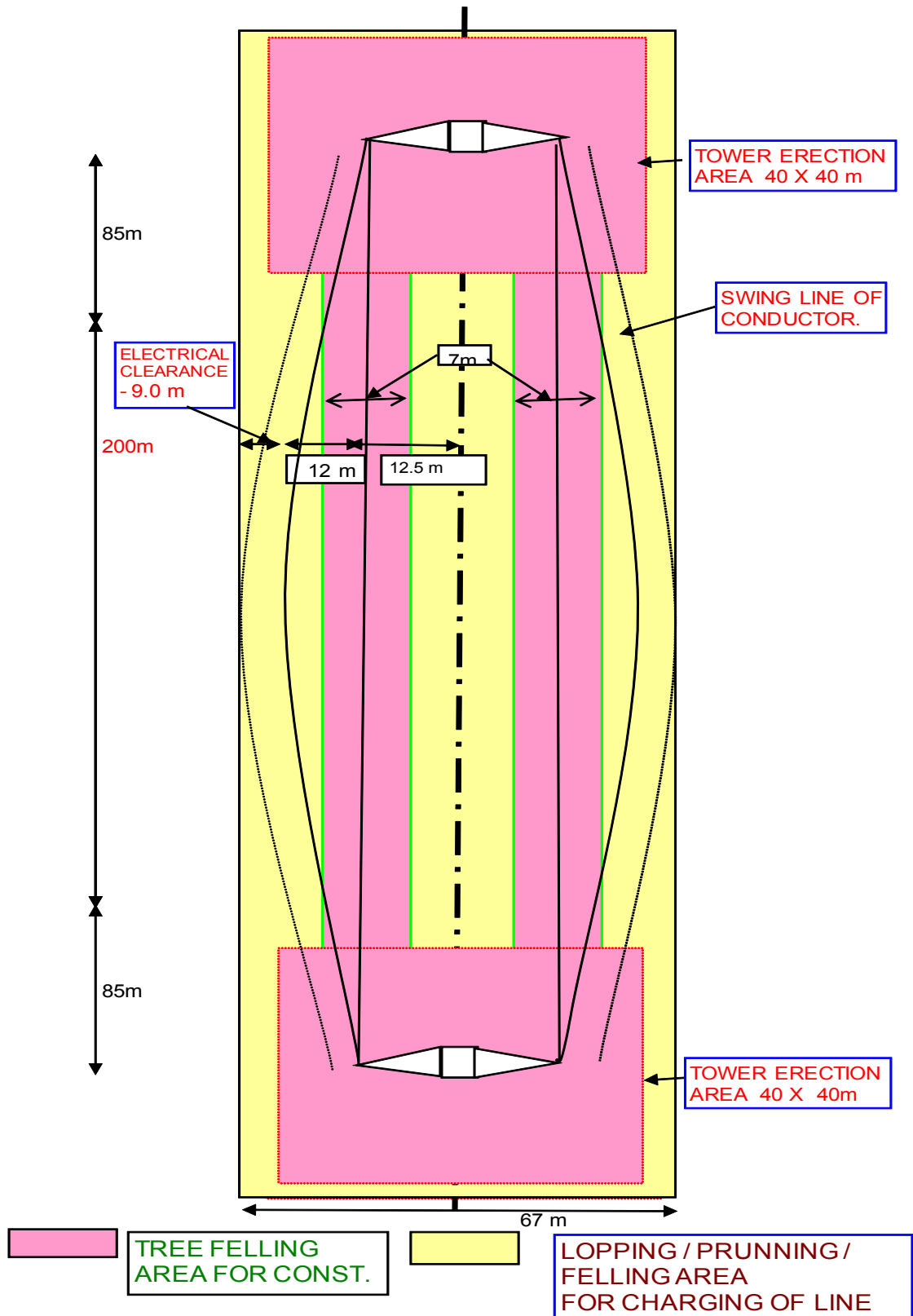
## 2. 400 kV D/c Bhadla (PG) – Bhadla (RVPN) (Quad) line



# **APPENDIX- 2 & 2A**



# TREE FELLING AREA FOR 765 KV TRANS. LINE



# TREE FELLING AREA FOR 400KV TRANS. LINE

