

Semi-Annual Environment & Social Safeguard
Monitoring Report
(Reporting Period: Up to December 2020)

High Capacity Energy Transmission Project



Prepared by : ENVIRONMENT AND SOCIAL MANAGEMENT DEPTT.
Implementing Agency : POWERGRID
Date : 24.03.2021

ABBREVIATIONS

ADB		Asian Development Bank
CFC	–	Chlorofluorocarbons
CTU	–	Central Transmission Utility
EMF	–	Electro Magnetic Fields
EMP	–	Environment Management Plan
ESMD	–	Environment & Social Management Department
ESPP	–	Environmental and Social Policy & Procedures
GoI	–	Government of India
GRC	–	Grievance Redressal Committee
GRM	–	Grievances Redressal Mechanism
GW	–	Giga Watt
Ha.	–	Hectare
HVDC	-	High Voltage Direct Current
ICNIRP		International Commission on Non-Ionizing Radiological Protection
KfW	–	Kreditanstalt für Wiederaufbau
LILO		Loop-In Loop-Out
km	–	Kilometer
MoEFCC	–	Ministry of Environment, Forest and Climate Change
RMoEFCC		Regional Office of Ministry of Environment, Forest and Climate Change
PMU	–	Project Management Unit
PG/ POWERGRID	–	Power Grid Corporation of India Ltd.
PS		Polling Station
PPEs		Personal Protective Equipments
R&R	–	Rehabilitation & Resettlement
RoW	–	Right of Way
S/s/SS	–	Substation
TL/T/L		Transmission Line
TN		Tamil Nadu
VSC		Voltage Source Converter

TABLE OF CONTENTS

Section		Description		Page No.
Section 1	:	Introduction	-	1
1.1	:	Overall Project Description	-	1
1.2	:	Project Objectives	-	2
1.3	:	Safeguard Performance Indicator	-	2
1.4	:	Overall Project Progress, Agreed Milestones and Completion Schedules	-	2
Section 2	:	Status of Compliance	-	5
2.1	:	Environmental Compliance	-	5
2.2	:	Social Compliance	-	7
Section 3	:	Compliance Status with Environment Management and Monitoring Plan stipulated In ESA and as agreed with KfW	-	12
Section 4	:	Approach and Methodology engaged for Environmental and Social Monitoring of the Project	-	31
Section 5	:	Monitoring of Environmental Receptors/Attributes	-	31
Section 6	:	Any other Monitoring of Environmental Aspects, Impacts observed during Implementation	-	32
Section 7	:	Details of Grievance Redress Committee and Complaint Received and Action taken	-	33
Section 8	:	Conclusion	-	49

LISTS OF TABLE

Table No.	Description	Page No.
Table - 1	Compliance status with Environmental Regulations	5
Table – 1.1	Details of Forest/Wildlife Clearance	6
Table - 2	Details of Substation Land	7
Table - 3	Details of Tree & Crop Compensation	8
Table - 4	Details of Land Compensation	10
Table - 5	Compliance Status of Environment Management Plan	13
Table - 6	Details of Verbal/Written Complaints	34
Table – 6a	Details of Court Cases	43

LISTS OF ENCLOSURES

Title	Description	Page No.
Plate - 1	Safety Awareness/Training & Safe Working Practices	51
Plate - 2	E & S Training Programme in reporting period	53
Annexure-1	Sample Compensation Case	54
Annexure-2	Photographs related Covid- 19 Specific Measures Implemented at various Sites	56

APPENDIX-1

SECTION 1: INTRODUCTION

Power Grid Corporation of India Ltd. (POWERGRID), the Central Transmission Utility (CTU) of the country, is engaged in power transmission with the mandate for planning, co-ordination, supervision and control over complete Inter State Transmission System. It has been contributing significantly towards development of Indian power sector by undertaking coordinated development of power transmission network along with effective and transparent operation of regional grids and through continuous innovations in technical & managerial fields. As on February 28, 2021, POWERGRID operates a Grid network consisting of 1,69,313 ckm of transmission line and 252 associated substations having a transformation capacity of 4,27,565 MVA, while ensuring a system availability of more than 99.5%.

With an aim to further strengthen the transmission network of the country, POWERGRID and KfW signed the loan agreement for Euro 200 Millions on 28th December 2018 to finance various transmission projects being undertaken by POWERGRID.

The measurable benefits of the project include;

- 1) Enhanced transmission capacity of around 6000 MW through the implementation of ± 800 KV HVDC Raigarh- Pugalur link;
- 2) Increased transmission capacity of around 2000 MW through establishment of VSC based ± 320 KV HVDC link between Pugalur and North Trichur;
- 3) Increase of transmission capacity by around 4000 MW in selected areas of North-Eastern region, Northern region, Western region, Southern region, and eastern region through various transmission projects and increased voltage system stability.

1.1 OVERALL PROJECT DESCRIPTION

The components of the High Capacity Energy transmission Project include:

- 1) HVDC Bipole Link between Western Region (Raigarh, Chhattisgarh) and Southern Region (Pugalur, Tamilnadu) - North Trichur (Kerala) - Scheme 1: Raigarh -Pugalur 6000 MW HVDC System (only HVDC Lines, but including conductor packages);
- 2) HVDC Bipole link between Western Region (Raigarh, Chhattisgarh) and Southern Region (Pugalur, TM) - North Trichur (Kerala) - Scheme-III: Pugalur-North Trichur VSC (Except Terminal Poles);
- 3) Transmission System Strengthening in Indian System for Transfer of Power from Mangdechhu Hydroelectric Project in Bhutan;
- 4) System Strengthening Scheme in Northern Region – XXXVII;
- 5) Eastern Region Strengthening Scheme-XVII (Part-B);
- 6) 400KV D/C Baharampur (PG) - Bheramara (B'desh) line (IInd Ckt) - India portion;
- 7) System Strengthening Schemes at Tuticorin-II (erstwhile Tirunelveli GIS) & Bhuj PS;
- 8) Implementation of 500MVA Thyristor Controlled Reactor at Kurukshetra 400kV bus;
- 9) Transmission System for Solar Energy Zones in Rajasthan.

1.2 PROJECT OBJECTIVES

The broader goal of the project is to contribute towards a broad based, technically and economically efficient & socially and ecologically sustainable electricity supply in India. The specific objectives of the project include securing growing power demand of the country, to enhance the stability and reliability of the power transmission system and energy security of India.

1.3 SAFEGUARD PERFORMANCE/COMPLIANCE INDICATORS

The following parameters which are considered as key indicators for this project require regular monitoring to evaluate the safeguard performance;

1. The borrowers shall at all times carry out its business and operations in compliance with all applicable national environmental, occupational health & safety and social laws & regulations.
2. The Borrower shall be responsible for the preparation, implementation and operation of the project in compliance with the Borrower's Environmental and Social Policy & Procedures (ESPP), the ADB Safeguard Policy Statement and Environment Management Plans derived for each of the subprojects, which have also been made part of project specific Initial Environment Assessment reports (IEARs) and contract document.
3. Regarding the environmental and social standards, special attention has been and will be accorded to:
 - a) Identify environmentally and socially sensitive areas such as among others, Right of Ways (RoW) issues, natural reserves, forests, riparian areas, wetlands, mountains, critical wildlife habitats and geologically sensitive areas
 - b) Application of protective measures for birds against collisions (markings of lines), especially in the proximity of river crossings and water bodies
 - c) Keeping of the benchmarks established by the International Commission on Non-ionizing Radiological Protection (ICNIRP) on electro-magnetic fields in cases where transmission comes closely to settlements.
 - d) Application of enhanced compensation in all states where the state governments have adopted/ratified the Ministry of Power (MoP), Government of India guidelines of Oct' 15 on RoW compensation.

1.4 OVERALL PROJECT PROGRESS, AGREED MILESTONES & COMPLETION SCHEDULE

Name of Project	Project Details	Progress as on December 2020 (in %)	Completion Schedule
HVDC Bipole Link between Western Region (Raigarh, Chhattisgarh) and Southern Region (Pugalur, Tamilnadu) - North Trichur (Kerala) - Scheme 1: Raigarh-Pugalur 6000 MW HVDC	± 800 kV Raigarh (HVDC Station) - Pugalur (HVDC Station) HVDC Bipole link	Foundation: 100% Erection: 100% Stringing: 100 % (Pole-1 commissioned in September 2020.)	Balance system likely to be commissioned by March 2021.

System (only HVDC Lines, but including conductor packages)			
HVDC Bipole Link between Western Region (Raigarh, Chhattisgarh) and Southern Region (Pugalur, Tamilnadu) - North Trichur (Kerala) - Scheme-III : Pugalur-North Trichur VSC (Except Terminal Poles)	Establishment of VSC based 2000 MW HVDC link between Pugalur and North Trichur (Kerala)- Overhead 320kV HVDC line.	Foundation: 100% Erection: 100% Stringing: 100% (Commissioning by March 2021)	December, 2020
	LILO of North- Trichur – Cochin 400 kV (Quad) D/C Line at North Trichur HVDC Station	Foundation: 100% Erection: 100% Stringing: 100% (Commissioning by March 2021)	December, 2020
Transmission System Strengthening in Indian System for transfer of power from Mangdechhu Hydroelectric Project in Bhutan	Jigmeling - Alipurduar 400kV D/C(Quad) TL (Indian portion)	Foundation: 98% Erection: 96.13% Stringing: 82.2%	March, 2021
System Strengthening Scheme in Northern Region-XXXVII (NRSS- XXXVII)	LILO of both ckt of 400KV Dhauliganga - Bareilly line at Jauljivi	Foundation: 100% Erection: 100% Stringing: 74%	March, 2021
	Diversion of Dhauliganga - Bareilly 400KV D/C line (operated at 220KV) at Bareilly end from Bareilly (UP) to Bareilly (PG) line	Foundation: 100% Erection: 100% Stringing: 98.56%	
	Disconnection of 220kV LILO of Dhauliganga-Bareillyat Pithoragarh& connecting it to Jauljivi SS at 220 kV level	Foundation: 93.3 % Erection: 88 % Stringing: 79.16 %	
	400/220KV Jauljivi (GIS) Sub station	Civil works: 90% Equipment Supply: 95% Erection: 90%	
	Extn at 765/400KV Bareilly Sub station	Civil works: 95% Equipment Supply: 100% Erection: 95%	
Eastern Region Strengthening Scheme- XVII (Part-B)	Extn. at 400/220KV Gaya S/stn.	Civil works: 100% Equip. Supply: 100% Erection: 100%	March, 2021
	Extn. at 400/220KV New Siliguri S/s (3rd ICT)	Civil works: 97% Equip. Supply: 100% Erection: 98%	
	Extn. at 400/220KV Durgapur S/s (3rd ICT)	Civil works: 100% Equip. Supply: 100% Erection: 100%	
	Extn. at 400/220KV Jeypore S/stn.	Civil works: 85% Equip. Supply: 80% Erection: 70%	

	Extn. at 400/220KV Rourkela S/stn.	Civil works: 90% Equipment Supply: 90% Erection: 80%	
	Repl. of 400/220KV Malda S/s	Civil works: 95% Equipment Supply: 90% Erection: 90%	
	Extn. at Maithon (PG) & Maithon (RB)	Civil works: 85% Equipment Supply: 95% Erection: 70%	
	Bypassing of LILO of 400KV lines at Angul.	Civil works: 100% Equipment Supply: 100% Erection: 100%	
Baharampur (POWERGRID) Bheramara (Bangladesh) 2nd 400kV D/c line (Indian Portion)	400kV D/C Baharampur (PG) - Bheramera (B'desh) line (IInd Ckt) - India portion	Foundation: 100% Erection: 100% Stringing: 100%	Line completed in May, 2020
	Extn. at 400KV Baharampur S/stn.	Civil works: 100% Equipment Supply: 100% Erection: 100%	
System Strengthening Schemes at Tuticorin-II (erstwhile Tirunelveli GIS) and Bhuj PS	Aug.at 400/230 kV Tuticorin-II (GIS) S/S	Civil works: 100% Equipment Supply: 100% Erection: 100%	March, 2021
	Augmentation at 765/400/220 KV Bhuj S/S	Civil works:95% Equipment Supply: 90% Erection: 80%	
Implementation of 500MVAR Thyristor Controlled Reactor at Kurukshetra 400kV bus	500 MVAR Thyristor Controlled Reactor (TCR) at 400 kV Kurukshetra -1 No.	Civil works: 30% Equipment Supply: 0% Erection: 0%	July, 2021
Transmission System for Solar Energy Zones in Rajasthan.	LILO of both circuits of Ajmer - Bikaner 765kV D/c line at Bhadla-II PS	Foundation: 100% Erection: 97% Stringing: 63.63%	March, 2021
	400kV D/C Bhadla-II PS - Bhadla (PG) (Twin HTLS)	Foundation: 79.41% Erection: 68.38% Stringing: 32%	
	LILO of both circuits of Fatehgarh (TBCB) - Bhadla (PG) 765 kV D/c line at Fatehgarh-II PS	Foundation: 91.16% Erection: 77.2% Stringing: 46.83%	
	Establishment Bhadla-II, Substation	Civil works: 80% Equipment Supply: 65% Erection: 45%	
	Establishment Fatehgarh-II, S/s	Civil works: 70% Equipment Supply: 55% Erection: 30%	
	Extn. of 765/400/220 KV Bhadla (PG) S/S	Civil works: 70% Equipment Supply: 45% Erection: 25%	
	Extn. of 765/400 KV Bhiwani (PG) S/S	Civil works: 30% Equipment Supply: 20% Erection: 5%	

SECTION 2: STATUS OF COMPLIANCE

2.1 ENVIRONMENTAL COMPLIANCE

The compliance status with respect to applicable regulations is presented below in **Table 1**.

Table 1: Compliance status with applicable Environmental Regulations

S N	Legal Requirements	Applicable Attributes	POWERGRID's Compliance Status
1	Forest (Conservation) Act, 1980	This Act is applicable whenever a transmission line traverses through forest area. Prior approval from Ministry of Environment, Forests and Climate Change (MoEFCC), GoI is needed for starting construction of line in forest areas.	Detailed forest clearance status is presented in Table-1.1 .
2	Wildlife (Protection) Act, 1972	After Hon'ble Supreme Court order dated 14.02.2000, transmission lines passing through protected areas like National Parks, Wildlife Sanctuary and other Eco sensitive area require prior permission from National Board for Wildlife (NBWL) for starting of work within protected areas.	In the instant case, four nos. of Transmission Lines i.e. ± 800 kV Raigarh-Pugalur, ± 320 kV HVDC Pugalur-North Trichur TL, 400kV D/C Jigmeling-Alipurduar TL and LILO of both circuits of Ajmer-Bikaner 765kV D/c line at Bhadla-II PS are passing through Protected Areas. Details of wildlife clearance status is provided in Table-1.1 .
3	Ozone Depleting Substances (Regulation & Control) Rules, 2000	Controls and regulations specified on manufacturing, import, export, and use of CFC compounds.	Necessary provisions have been made in contract document for restricting the use/supply of CFC compounds.
4	Batteries (Management and Handling) Rules, 2001	To avoid/minimize lead pollution, Bulk consumers shall have the responsibility to dispose all used batteries to dealers, manufacturer, registered recycler, reconditioners or at the designated collection centres only. Half-yearly return (Form-8) for the same is to be submitted to the concerned State Pollution Control Board.	Since the subprojects covered under the loan are yet to be commissioned, no used batteries have been replaced so far.
5	Hazardous & Other Wastes (Management and Transboundary Movement) Rules, 2016	As per the notification, used mineral oil is categorized as hazardous waste and requires proper handling, storage and disposal only to authorized disposal facility (registered recyclers/ re-processors). Annual return (Form - 4) for the same is to be submitted to the concerned State Pollution Control Board.	Transformer oil (Used mineral oil) is changed only after 10-15 years of operation. Since the subprojects covered under the loan are yet to be commissioned, oil change/ replacement is not envisaged at present.

Table – 1.1: Details of Forest & Wildlife Clearance Status

Sl.	Name of Line	Forest (Ha.) /State	Status
1	HVDC Bipole Link between Western Region (Raigarh, Chhattisgarh) & Southern Region (Pugalur, Tamilnadu) - North Trichur (Kerala) - Scheme 1 : Raigarh - Pugalur 6000 MW HVDC System		
i	800 kV HVDC Raigarh- Pugalur line	Maharashtra: (432.679 ha.) (including 25.149 ha Tiger corridor)	Stage-I issued on 05.09.18. Stage-II issued on 29.09.20. Tiger Corridor (25.149 ha.): Proposal recommended in NBWL meeting held on 18.07.19. MoM meeting issued on 29.08.19.
		Andhra Pradesh: (64.23 ha.)	Stage-I issued on 10.09.18. Working permissions issued on 27.11.18, 28.11.18, 28.11.18 & 04.12.18 respectively for four different forest divisions.
		Telangana (20.53 ha.)	Stage-I issued on 05.04.18. Stage-II issued on 28.09.20.
		Tamil Nadu (9.12 ha.)	Stage-I issued on 07.06.18. Stage-II issued on 30.01.20.
2	HVDC Bipole link between Western Region (Raigarh, Chhattisgarh) and Southern Region (Pugalur, TM) - North Trichur (Kerala) - Scheme-III: Pugalur- North Trichur VSC (Except Terminal Poles)		
i	VSC based 2000 MW HVDC link (320 kV) between Pugalur and North Trichur	Kerala (0.244 ha. Including 0.098 ha WL)	Thrissur Division (0.146 ha) & Peechi Wildlife Sanctuary (0.098 ha): NBWL recommendation for Peechi wildlife obtained on 08.02.18. Stage-I & Stage-II (final) forest approval issued on 09.10.18. & 24.09.19 respectively.
ii	LILO of North Trichur-Cochin 400kV (Quad) D/C line at North Trichur HVDC Station	Nil	No forest area involved.
3	Transmission System Strengthening in Indian System for transfer of power from Mangdechhu Hydroelectric Project in Bhutan		
i	400 kV D/c Jigmeling - Alipurduar	Assam (208.807 ha. WL)	NBWL recommended for wildlife obtained on 26.09.18. Stage-I issued on 18.10.18. Stage-II issued on 15.02.2021.
		WB (Nil)	No forest area involved.
4	System Strengthening Scheme in Northern Region-XXXVII (NRSS-XXXVII)		
i	LILO of both ckt of 400kV Dhauliganga-Bareilly (PG) line (presently charged at 220 kV) at 400/220kV Jauljivi substation & disconnection of 220kV LILO arrangement of Dhauliganga-Bareilly at Pithoragarh & connecting it to Jauljivi SS at 220 kV level	Uttarakhand (58.449 ha.)	Stage-I issued on 31.10.2019. Working permission issued on 23.12.19.

ii	Diversion of Dhauliganga-Bareilly 400 KV D/C line (operated at 220 KV) at Bareilly end from Bareilly (UP) to Bareilly (PG)	Uttar Pradesh (0.115 ha.)	Stage-I issued on 22.01.20. Stage-II issued on 12.06.20.
5	Transmission System for Solar Energy Zones in Rajasthan.		
i	LILO of both circuits of Ajmer-Bikaner 765kV D/c at Bhadla-II PS	Rajasthan (1.7778 ha.)	Loop out (0.8918 ha): Stage-I issued on 07.08.20. CA, NPV deposited on 15.12.20. Loop in (0.886 ha): Stage-I issued on 04.08.20. CA, NPV deposited on 15.12.20.
ii	400kV D/C Bhadla-II PS - Bhadla (PG)	Rajasthan (4.95 ha.)	Forest proposal submitted on 14.03.20. Proposal presently with State Govt.
iii	LILO of both circuits of Fatehgarh (TBCB) - Bhadla (PG) 765 kV D/c line (operated at 400kV) at Fatehgarh-II PS	-	Matter taken up with DFO/ RO for issuance of NoC for No Forest Area involvement. Inspection of RO completed on 17.06.20. DFO (Jaisalmer) vide letter dated 26.11.20 has sought reply from POWERGRID regarding NoC and Environment Clearance. Reply submitted to DFO Jaisalmer on 07.12.20. NoC to be issued by DFO.

The clearance/approval letters are provided at **Appendix-I**.

2.2 SOCIAL COMPLIANCE

2.2.1 Substation Land:

Details of land required for proposed substations, land status and social compliance are provided in following table;

Table 2: Details of Substation Land

S. N	Name of Substation	Area (acre)	Location	Type of Land	Land Status	Social Compliance
1.	400/220 kV GIS (New) substation at Jauljivi	11.104	The land is located at Bagrihat village in Pithoragarh district. Co-ordinates: 29°44'40"N 80°21'30"E	Private	Private land purchased through willing buyer-willing seller basis on negotiated rate.	As the land for substation is purchased on willing buyer- willing seller basis on negotiated rate, no involuntary acquisition is involved.
2.	765/400 kV Bhadla II Substation	180.38	The land is located at Kan Singh Ki Sid village of Jodhpur district. Co-ordinates: A)27.50636 N 72.47946 E B)27.51193 N 72.47551 E C)27.51675 N	Govt. Gochar Land	Govt. Land transferred to POWERGRID	Since, the proposed substations are being built on encroachment free Govt. owned land, no Project Affected Persons (PAPs) and R&R issues are involved. Hence, no action plan for R&R of affected peoples is needed.

			72.48407 E D)27.51117 N 72.48801 E		
3.	765/400 KV (New) Fatehgarh II PS	180.31	The land is located at Sanwata village of Jaisalmer district. Co-ordinates A) 26.704126 N 71.280127 E B) 26.713072N 71.280312 E C) 26.713001N 72.272298E D) 26.704395N 71.272336E	Govt. Land	Govt. Land transferred to POWERGRID

Additionally, extensions/augmentations of various substations such as 765/400 kV Bareilly, 400/220 kV Gaya, 400/220 kV New Siliguri, 400/220 kV Durgapur, 400/220 kV Jeypore, 400/220kV Rourkela, 400/220 kV Malda, 400/230 kV Tuticorin, 400/220 kV Baharampur, 765/400/220 kV are proposed under the project, for which sufficient land is available in the campus of existing substations. Hence, there is no need for arranging/acquiring fresh land.

A summary of the environmental & social mitigation measures, their monitoring vis-à-vis compliance by POWRGRID's is given in **Table-5**.

2.2.2 `Compensation for Tree/crop damages:

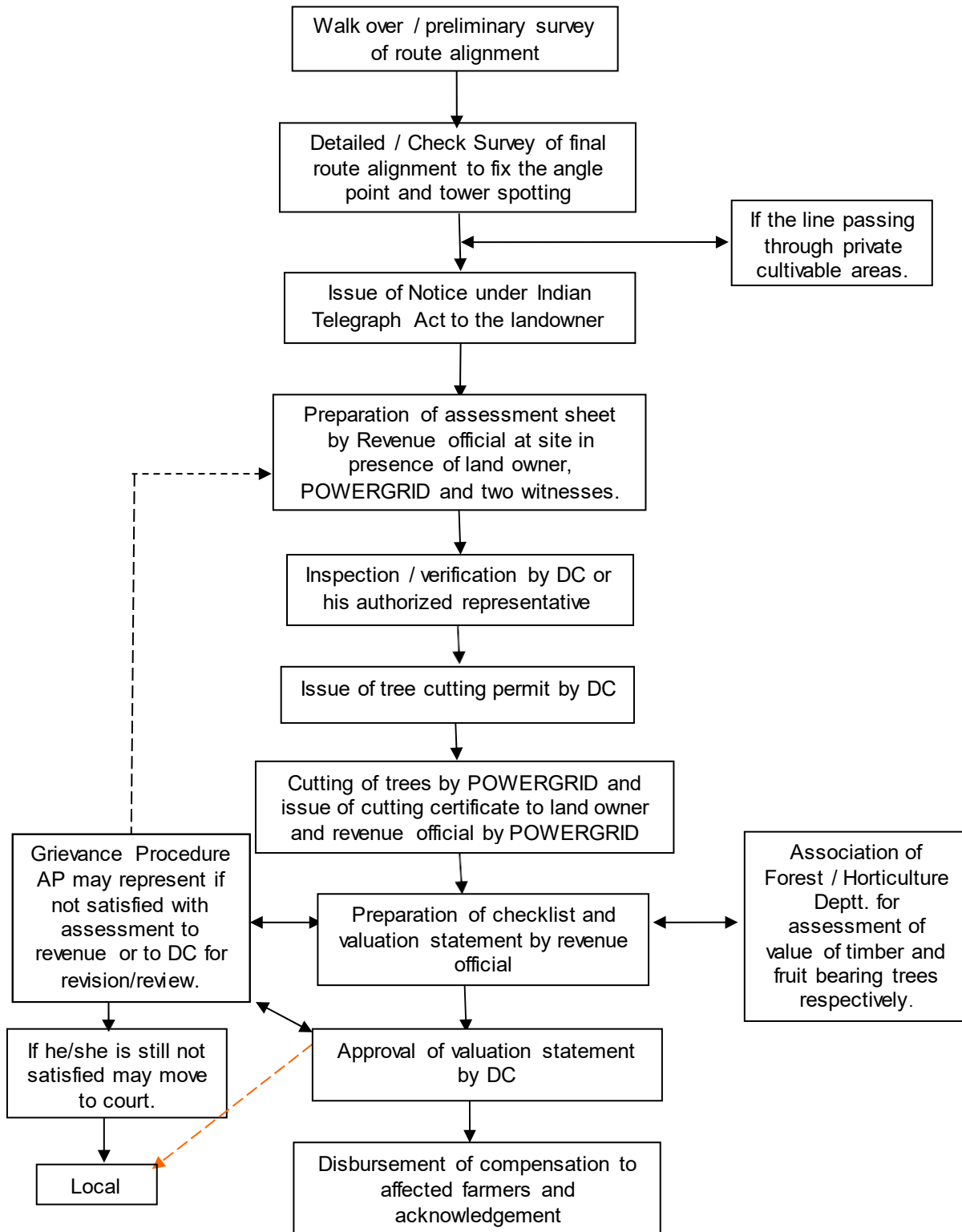
POWERGRID follows the principle of Avoidance, Minimization and Mitigation in construction of Transmission Lines. Due to inherent flexibility in phasing the construction activities, it tries to defer/avoid construction in cropped area/season to facilitate crop harvesting while passing through agricultural fields. However, if it is unavoidable and is likely to affect project schedule, compensation is given at market rate for standing crops. The process of tree/crop compensation is depicted in **Figure 1**. All efforts are also taken to minimize the crop damage to the extent possible in such cases. In the instant project also POWERGRID is taking all possible measures to avoid damages to crop/trees by taking up the construction activities during lean period or post-harvest season. As per the prevailing norms farming activity is allowed after the construction work is completed. However, compensation for the loss of crops/trees/any structure etc. paid to Affected Persons (APs) for the area of damage to mitigate the impacts up to 3 times i.e. during foundation work, tower erection & stringing as per the prevailing situation. Details of line wise compensation paid for Tree & Crop damages is given in **Table- 3**:

Table 3: Details of Crop & Tree compensation

Sl. No.	Name of the Line	No. of Persons issued notice	Affected Land Area (Ha.)	Nos. of Tree affected	Compensation Paid for crop damages (Rs Lakh)			Compensation Paid for Tree damages (Rs lakh)		
					Foundation	Erection	Stringing	Foundation	Erection	Stringing
1	Baharampur (PG) – Bheramara 400 KV D/C line	12000	425	15600	198.53	234.55	472.87	0.3	0.18	204.25
2	LILO of both ckt of 400KV Dhauliganga - Bareilly (PG) line at Jauljivi	30	1.6179	Nil	4.01	0.24	0.62	Nil	Nil	Nil
3	Diversion of Dhauliganga- Bareilly 400KV D/C line (operated at 220KV) at Bareilly end from Bareilly (UP) to Bareilly (PG) line	215	21.25	5694	30.85	Nil	0.08	Nil	Nil	12.16
4	Disconnection of 220 KV LILO arrangement of Dhauliganga - Bareilly at Pithoragarh and connecting it to Jauljivi S/Stn. at 220 KV level	37	1.1662	Nil	1.61	1.09	0.3	Nil	Nil	Nil
5	Jigmeling – Alipurduar 400 KV D/C (Quad) TL	11488	650.2493	175192	850.64	1032.99	1163.47	68.77	9.55	1427.68
6	VSC based 2000 MW HVDC link (320 KV) between Pugulur and North Trichur	3130	361.47	66006	365	206	276.95	2209	2090	3051
7	800 KV HVDC Raigarh – Pugulur Bi-pole link	43964	5106.7452	521280	2607.11	3070.47	5430.36	3027.97	1238.64	30950.14
8	LILO of both ckt of Ajmer - Bikaner 765 kV D/C Line at Bhadla-II PS	1802	918.875	Nil	233.16	270.17	45.53	Nil	Nil	Nil
9	Bhadla-II PS - Bhadla (PG) 400kV D/C Line	130	87.0372	Nil	28.07	31.84	21.52	Nil	Nil	Nil
10	LILO of both ckt of Fatehgarh (TBCB) - Bhadla (PG) 765 kV D/C Line (Operational at 400 kV) at Fatehgarh-II PS	121	88.9995	Nil	24.17	29.2	14.09	Nil	Nil	Nil
	Total	72917	7662.4103	783772	4343.15	4876.55	7425.79	5306.04	3338.37	35645.23

A total sum of Rs 60935.13 lakhs has been paid as tree/crop compensation till December'2020. A sample copy of crop compensation notice along with assessment sheet is enclosed at **Annexure-1**.

Figure 1: Tree/Crop Compensation Process



2.2.3 Land Compensation as per MoP Guidelines:

Ministry of Power (MoP), Govt of India vide their guidelines dated 15th October 2015 mandated payment of 85% land cost for the land coming under tower base and payment of maximum 15% of land cost for the land coming under the line corridor. However, these guidelines are subject to adoption by state governments for implementation in respective states. Till date, State governments of Maharashtra, Andhra Pradesh, Tamil Nadu and Assam have adopted these guidelines among the States, where the project is being executed, while states of West Bengal and Telangana are yet to adopt these guidelines¹. Among the other involved States, Kerala has implemented the said guidelines for one particular transmission line Edamon-Kochi 400 kV D/C line, while in case of Uttar Pradesh and Uttarakhand, the guidelines have been adopted only for state sector projects. In order to keep a check on such issues, it is also reflected in the EMP for regular monitoring. The details of land compensation paid as per the provisions of the said guidelines are given in **Table- 4**:

Table -4: Details of Land Compensation as per MoP Guidelines

Sl. No	Name of the Line	Total Compensation paid for area under Tower Base (Rs. Lakhs)	Total Compensation paid for area under RoW Corridor (Rs. Lakhs)	Rate of Land Compensation (Rs)	Remark, if any
1	Baharampur - Bheramara 400 KV D/C	Not Applicable	Not Applicable	Not Applicable	Govt of West Bengal yet to ratify the MoP Guidelines dtd. October 2015 regarding RoW compensation
2	LILO of both ckt of 400kV Dhauliganga - Bareilly (PG) line at Jauljivi	Nil	Nil	Nil	Rate verification under process
3	Disconnection of 220 KV LILO of Dhauliganga - Bareilly at Pithoragarh & connecting it to Jauljivi SS at 220 KV level	6.82	Nil	Ranging from Rs 77- 1195 per sq. m.	Order issued by State Govt. on 5th August 2020 for POWERGRID/ PTCUL projects mandates payment for only tower base @85%.
4	Diversion of Dhauliganga-Bareilly 400kV D/C line (at Bareilly end	Nil	Nil	Nil	Rate verification under process

¹ Efforts are being made for the early adoption of the said guidelines in all states.

5	Jigmeling – Alipurduar 400 kV D/C (Quad)	376.36	2498.98	Ranging from Rs. 600 - 900 per sq. m	
6	VSC based 2000 MW HVDC link (320 kV) between Pugulur and North Trichur	107.68	1490.3		
7	800 kV HVDC Raigarh-Pugalur Bi-pole link	6310.65	8844.7	Ranging from Rs 360-1300/ per sq. m.	
8	LILO of both ckt of Ajmer - Bikaner 765 kV D/C Line at Bhadla-II PS	Nil	Nil	Nil	Govt. of Rajasthan is yet to adopt the guidelines dtd 15th October, 2015 issued by Ministry of Power, Govt of India regarding payment of RoW compensation.
9	Bhadla-II PS - Bhadla (PG) 400kV D/C Line	Nil	Nil	Nil	
10	LILO of both ckt of Fatehgarh (TBCB) - Bhadla (PG) 765 kV D/C Line (Operational at 400 kV) at Fatehgarh-II PS	Nil	Nil	Nil	
Total		6801.51	12833.98		

SECTION-3: COMPLIANCE STATUS WITH ENVIRONMENT MANAGEMENT PLAN STIPULATED IN ESA REPORT & AS AGRRED WITH KfW

The project is being implemented as per the approved Initial Environment Assessment Reports (IEARs) which are based on provisions of POWERGRID's Environmental and Social Policy & Procedures (ESPP), as agreed with KfW and in accordance with applicable laws. The IEARs include Environmental Management Plan (EMP) that describes detailed site-specific mitigation measures and monitoring plans for impacts anticipated during different stages of the proposed project i.e. pre-construction, construction, and operation & maintenance phase. The monitoring requirements have also been included in EMP which identifies when and where a particular parameter will be monitored, how often and against what aspect. For proper implementation, EMP has been made part of contract document to ensure full proof compliance even by the contractors and costs for such mitigation measures are built in the project cost.

Provisions of safety guidelines and checklists (**Annexure- 2**) which are part of IEARs are monitored on a regular basis, both by the POWERGRID, as well as, by the safety officer of the contractor. Duly approved provisions of safety plan are also implemented and are closely monitored by the Engineer-in-charge and by the Safety Officer from RHQ on a random basis. Daily briefing is organized before the start of work, where safety related instructions are issued to workers, in order to, ensure a safe working place as well as to ensure use of Personal Protection Equipment's (PPEs).

Monitoring of implementation of environmental and social mitigation measures is required to ensure that these are undertaken in accordance with the EMP and to enable mitigation to be adapted and refined as required. A summary of the environmental and social mitigation measures and monitoring requirements vis-à-vis compliance status by POWRGRID's is given in **Table 5**.

Table – 5: Compliance Status of Environment Management Plan

Sl. No./stage	Project activity	Potential Impact	Proposed mitigation measures	Parameter to be monitored	Measurement & frequency	Institutional responsibility	Implementation schedule	Compliance Status
Pre-construction								
1	Location of line towers and line alignment and design	Exposure to safety related risks	Setback of dwellings to line route designed in accordance with permitted level of power frequency and the regulation of supervision at sites	Tower location and alignment selection with respect to nearest dwellings	Setback distances to nearest houses – once	POWERGRID	Part of tower sitting survey and detailed alignment survey & design	Complied/Being Complied during survey. Route alignment criterion is part of survey contract.
2	Equipment specifications and design parameters	Release of chemicals and gases in receptors (air, water, land)	PCBs not used in substation transformers or other project facilities or equipment.	Transformer design	Exclusion of PCBs in transformers stated in tender specification – once	POWERGRID	Part of tender specifications for the equipment	Complied. As per technical specification PCB is not used or it is not detectable (i.e. less than 2mg/kg) as per IEC 61619 or ASTM D4059
			Processes, equipment and systems not to use chlorofluorocarbons (CFCs), including halon, and their use, if any, in existing processes and systems should be phased out and to be disposed of in a manner consistent with the requirements of the Govt.	Process, equipment and system design	Exclusion of CFCs stated in tender specification – once	POWERGRID	Part of tender specifications for the equipment	Complied
					Phase out schedule to be prepared in case still in use – once			
3	Transmission line design	Exposure to electromagnetic interference	Line design to comply with the limits of electromagnetic interference from power lines including those of ICNIRP	Electromagnetic field strength for proposed line design	Line design compliance with relevant standards – once	POWERGRID	Part of design parameters	Complied. Designed as per guidelines of ICNIRP and ACGIH and checked by CPRI &M/s PTI, USA
4	Substation location and design	Exposure to noise	Design of plant enclosures to comply with National ambient noise standards which are also compatible with the EHS guidelines of the World Bank.	Expected noise emissions based on substation design	Compliance with regulations - once	POWERGRID	Part of detailed siting survey and design	The design of the equipment is in compliance with the applicable regulations.

Cl. No./stage	Project activity	Potential Impact	Proposed mitigation measures	Parameter to be monitored	Measurement & frequency	Institutional responsibility	Implementation schedule	Compliance Status
		Social inequities	Careful selection of site to avoid encroachment of socially, culturally and archaeological sensitive areas (i.e. sacred groves, graveyard, religious worship place, monuments etc.)	Selection of substation location (distance to sensitive area).	Consultation with local authorities - once	POWERGRID	Part of detailed siting survey and design	Complied during survey. Route alignment criterion is part of survey contract.
5	Location of line towers & line alignment and design	Impact on water bodies	Avoidance of such water bodies to the extent possible. Avoidance of placement of tower inside water bodies to the extent possible	Tower location and line alignment selection (distance to water bodies)	Consultation with local authorities—once	POWERGRID	Part of tower siting survey and detailed alignment survey and design	Complied during survey. Route alignment criterion is part of survey contract.
		Social inequities	Careful route selection to avoid existing settlements and sensitive locations	Tower location and line alignment selection(distance to nearest dwellings or social institutions)	Consultation with local authorities and land owners – once	POWERGRID	Part of tower siting survey and detailed alignment survey and design	
			Minimise impact on agricultural land	Tower location and line alignment selection (distance to agricultural land)	Consultation with local authorities and land owners – once			
			Careful selection of site and route alignment to avoid encroachment of socially, culturally & archaeological sensitive areas (i. g. sacred groves, graveyards, religious worship places, monuments etc.)	Tower location and line alignment selection (distance to sensitive area)	Consultation with local authorities - once			

Cl. No./stage	Project activity	Potential Impact	Proposed mitigation measures	Parameter to be monitored	Measurement & frequency	Institutional responsibility	Implementation schedule	Compliance Status
6	Securing lands for substations.	Loss of land/ income change in social status etc.	In the case of Involuntary Acquisitions, Compensation and R&R measures are extended as per provision of RFCTLARRA, 2013 ¹	Compensation and monetary R&R amounts/ facilities extended before possession of land.	As per provisions laid out in the act	POWERGRID	Prior to award/start of substation construction.	Land for proposed substations are either prior existing lands under POWERGRID's control or private land purchased through willing buyer-willing seller basis on negotiated rates. (for details refer Table-2).
7	Line through protected area/ precious ecological area	Loss of precious ecological values/ damage to precious species	Avoid siting of lines through such areas by careful site and alignment selection (National Parks, Wildlife Sanctuary, Biosphere Reserves/ Biodiversity Hotspots)	Tower location and line alignment selection (distance to nearest designated ecological protected/ sensitive areas)	Consultation with local forest authorities - once	POWERGRID	Part of tower siting survey and detailed alignment survey and design	In spite of best efforts, involvement of 800.90Ha Forest Area including 234.054 Ha of Wildlife Area couldn't be avoided. However, the required Forest /Wildlife clearances have been/being obtained For details refer Table-1.1 .
			Minimize the need by using RoW wherever possible	Tower location and line alignment selection	Consultation with local authorities and design engineers- once	POWERGRID	Part of tower siting survey & detailed alignment survey & design	Complied
8	Line through identified Elephant corridor / Migratory bird	Damage to the Wildlife/ Birds and also to line	Study of earmarked elephant corridors to avoid such corridors, Adequate ground clearance, Fault clearing by Circuit Breaker, Barbed wire wrapping on towers, reduced spans etc., if applicable	Tower location and line alignment selection. Minimum /maximum ground clearance	Consultation with local forest authorities – once. Monitoring – quarterly basis	POWERGRID	Part of tower sitting and detailed alignment survey & design and Operation	Complied. The routes of proposed lines don't form part of any Elephant Corridor.

¹ No Involuntary acquisition of land (permanent) is involved, hence this clause shall not be applicable.
Semi-annual Safeguard Monitoring Report for the period up to December 2020

Cl. No./stage	Project activity	Potential Impact	Proposed mitigation measures	Parameter to be monitored	Measurement & frequency	Institutional responsibility	Implementation schedule	Compliance Status
			Avoidance of established/ identified migration path (Birds & Bats). Provision of flight diverter/ reflectors, bird guard, elevated perches, insulating jumper loops, obstructive perch deterrents, raptor hoods etc ² , if applicable	Tower location and line alignment selection	Consultation with local forest authorities - once	POWERGRID	Part of tower siting survey and detailed alignment survey and design	All identified/ established Bird migratory paths have been avoided as a result of careful route selection.
9	Line through forestland	Deforestation and loss of biodiversity edge effect	Avoid locating lines in forest land by careful site and alignment selection	Tower location and line alignment selection (distance to nearest protected or reserved forest)	Consultation with local authorities- once	POWERGRID	Part of tower siting survey and detailed alignment survey and design	Complied/Being complied. All measures were taken to avoid/ minimize impact on forest area after consultation with concerned authorities. However, inspite of best efforts 800.90 Ha Forest Area including 234.054 Ha of Wildlife Area couldn't be avoided and applicable forest have either been obtained or are being processed. (for details refer Table- 1.1).
			Minimise the need by using existing towers, tall towers and RoW, wherever possible		Consultation with local authorities and design engineers- once			
			Measures to avoid invasion of alien species	Intrusion of invasive species	Consultation with local forest authorities- once			
			Obtain statutory clearances from the Government	Statutory approvals from Government	Compliance with regulations – once for each subproject			
10	Lines through farmland	Loss of agricultural production/ change in cropping pattern	Use existing tower or footings wherever possible.	Tower location and line alignment selection.	Consultation with local authorities and design engineers – once	POWERGRID	Part of detailed alignment survey and design	Complied during survey. However, as per law of the land, no land is acquired for line tower but all damages are compensated as per provisions of Electricity

² As per International/National best practices and in consultation with concerned forest/wildlife Authority.
Semi-annual Safeguard Monitoring Report for the period up to December 2020

Cl. No./stage	Project activity	Potential Impact	Proposed mitigation measures	Parameter to be monitored	Measurement & frequency	Institutional responsibility	Implementation schedule	Compliance Status
			Avoid sitting new towers on farmland wherever feasible	Tower location and line alignment selection	Consultation with local authorities and design engineers- once		Part of detailed sitting & alignment survey /design	Act, 2003 and Indian Telegraph Act, 1885.
11	Noise related	Nuisance to neighbouring properties	Substations sited and designed to ensure noise will not be a nuisance and shall comply with National Ambient Noise Standards, which are also compatible with the EHS guidelines of the World Bank.	Noise levels	Noise levels to be specified in tender documents- once	POWERGRID	Part of detailed equipment design	The equipment installed substation are mostly static and are so designed that the noise level always remains within permissible limits i.e. 85 dB. In case of existing substations, the noise levels reported during normal operating conditions are about 60 to 70 dB at 2 m.
12	Interference with drainage patterns/ irrigation channels	Flooding hazards/ loss of agricultural production	Appropriate sitting of towers to avoid channel interference	Tower location and line alignment selection (distance to nearest flood zone)	Consultation with local authorities and design engineers- once	POWERGRID	Part of detailed alignment survey and design	Complied/Being complied. Appropriate siting of towers ensured during alignment survey and Tower spotting to avoid channel interference.
13	Escape of polluting materials	Environmental pollution	Transformers designed with oil spill containment systems, and purpose-built oil, lubricant and fuel storage system, complete with spill clean up equipment.	Equipment specifications with respect to potential pollutants	Tender document to mention specifications – once	POWERGRID	Part of detailed equipment design /drawings	Complied. Oil sump of sufficient capacity (200% by volume of oil tank in transformer) is provided for every transformer.

Cl. No./stage	Project activity	Potential Impact	Proposed mitigation measures	Parameter to be monitored	Measurement & frequency	Institutional responsibility	Implementation schedule	Compliance Status
			Substations to include drainage and sewage disposal systems to avoid offsite land and water pollution.	Substation sewage design	Tender document to mention detailed specifications – once	POWERGRID	Part of detailed substation layout and design /drawings	Complied. Provision of soak pit is part of design where sewage line is not present.
14	Equipments submerged under flood	Contamination of receptors	Substations constructed above the high flood level(HFL) by raising the foundation pad	Substation design to account for HFL (elevation with respect to HFL elevation)	Base height as per flood design- once	POWERGRID	Part of detailed substation layout and design/ drawings	Complied. Substation design ensures location of substations above HFL.
15	Explosions /Fire	Hazards to life	Design of substations to include modern fire fighting equipment Provision of fire fighting equipment to be located close to transformers	Substation design compliance with fire prevention and control codes	Tender document to mention detailed specifications – once	POWERGRID	Part of detailed substation layout and design /drawings	Complied. Firefighting equipments are integral part of Substation design.
Construction								
16	Equipment layout and installation	Noise and vibrations	Construction techniques and machinery selection seeking to minimize ground disturbance.	Construction techniques and machinery	Construction techniques and machinery creating minimal ground disturbance- once at the start of each construction phase	POWERGRID (Contractor through contract provisions)	Construction period	Complied/ Being Complied. Low noise producing machineries/ equipments are being used.
17	Physical construction	Disturbed farming activity	Construction activities on cropping land timed to avoid disturbance of field crops (within one month of harvest wherever possible).	Timing of start of construction	Crop disturbance – Post harvest as soon as possible but before next crop – once per site	POWERGRID (Contractor through contract provisions)	Construction period	Construction on farm land undertaken mostly during post- harvest period. Wherever, crop loss occur, compensation paid to farm owners & an amount of Rs. 16645.49 lakhs has been paid till Dec.'20 (refer Table 3).

Cl. No./stage	Project activity	Potential Impact	Proposed mitigation measures	Parameter to be monitored	Measurement & frequency	Institutional responsibility	Implementation schedule	Compliance Status
18	Mechanized construction	Noise, vibration and operator safety, efficient operation	Construction equipment to be well maintained.	Construction equipment – estimated noise emissions	Complaints received by local authorities – every 2 weeks	POWERGRID (Contractor through contract provisions)	Construction period	No complaints received so far
		Noise, vibration, equipment wear and tear	Turning off plant not in use.	Construction equipment – estimated noise emissions and operating schedules	Complaints received by local authorities – every 2 weeks	POWERGRID (Contractor through contract provisions)	Construction period	
19	Construction of roads for accessibility	Increase in airborne dust particles	Existing roads and tracks used for construction and maintenance access to the line wherever possible.	Access roads, routes (length and width of new access roads to be constructed)	Use of established roads wherever possible – every 2 weeks	POWERGRID (Contractor through contract provisions)	Construction period	Most sites are easily accessible and existing road are used for construction activity.
		Increased land requirement for temporary accessibility	New access ways restricted to a single carriageway width within the RoW.	Access width (meters)	Access restricted to single carriage –way width within RoW – every 2 weeks	POWERGRID (Contractor through contract provisions)	Construction period	Complied/ Being Complied
20	Construction activities	Safety of local villagers	Coordination with local communities for construction schedules, Barricading the construction area and spreading awareness among locals	Periodic and regular reporting /supervision of safety arrangement	No. of incidents- once every week	POWERGRID (Contractor through contract provisions)	Construction period	All required safety precautions and protocols have been complied with resulting in no accidents during the reporting period.
		Local traffic obstruction	Coordination with local authority, requisite permission for smooth flow of traffic. Imposing speed limits on Project vehicles in project/habitation areas.	Traffic flow (Interruption of traffic)	Frequency (time span)- on daily basis	POWERGRID (Contractor through contract provisions)	Construction period	Most of the tower locations are in farm/barren land in rural setting. Hence, the cases of traffic obstruction are not encountered.

CI. No./stage	Project activity	Potential Impact	Proposed mitigation measures	Parameter to be monitored	Measurement & frequency	Institutional responsibility	Implementation schedule	Compliance Status
21	Temporary blockage of utilities	Overflows, reduced discharge	Measure in place to avoid dumping of fill materials in sensitive drainage area	Temporary fill placement (m ³)	Absence of fill in sensitive drainage areas – every 4 weeks	POWERGRID (Contractor through contract provisions)	Construction period	Complied/ Being Complied by ensuring proper management of fill.
22	Site clearance	Vegetation	Marking of vegetation to be removed prior to clearance, and strict control on clearing activities to ensure minimal clearance.	Vegetation marking and clearance control (area in m ²)	Clearance strictly limited to target vegetation – every 2 weeks	POWERGRID (Contractor through contract provisions)	Construction period	Proper\clearance ensured through prior permission of concerned authority /owners
			No use of herbicides and pesticides					
23	Trimming /cutting of trees within RoW	Fire hazards	Trees allowed growing up to a height within the RoW by maintaining adequate clearance between the top of tree and the conductor as per the regulations.	Species-specific tree retention as approved by statutory authorities (avg. and max. tree height at maturity, in meters)	Presence of target species in RoW following vegetation clearance – once per site	POWERGRID (Contractor through contract provisions)	Construction period	Regulated felling of tree in RoW is carried out with permission of owner & revenue authority keeping required electrical clearance as per design.
		Loss of vegetation and deforestation	Trees that can survive pruning to comply should be pruned instead of cleared.	Species-specific tree retention as approved by statutory authorities	Presence of target species in RoW following vegetation clearance-once per site	POWERGRID (Contractor through contract provisions)	Construction period	Complied/ Being Complied
			Felled trees and other cleared or pruned vegetation to be disposed of as authorized by the statutory bodies.	Disposal of cleared vegetation as approved by the statutory authorities (area cleared in m ²)	Use or intended use of vegetation as approved by the statutory authorities – once per site	POWERGRID (Contractor through contract provisions)	Construction period	All felled trees are handed over to owner for disposal. POWERGRID has no role in storage and disposal of felled tree/wood.

Cl. No./stage	Project activity	Potential Impact	Proposed mitigation measures	Parameter to be monitored	Measurement & frequency	Institutional responsibility	Implementation schedule	Compliance Status
24	Wood/vegetation harvesting	Loss of vegetation and deforestation	Construction workers prohibited from harvesting wood in the project area during their employment, (apart from locally employed staff continuing current legal activities).	Illegal wood /vegetation harvesting (area in m ² , number of incidents reported)	Complaints by local people or other evidence of illegal harvesting – every 2 weeks	POWERGRID (Contractor through contract provisions)	Construction period	Complied/Being Complied No complaints received on illegal harvesting.
25	Surplus earthwork/soil	Runoff to cause water pollution, solid waste disposal	Soil excavated from tower footings/ substation foundation disposed of by placement along roadsides, or at nearby house blocks if requested by landowners.	Soil disposal locations and volume (m ³)	Acceptable soil disposal sites – every 2 weeks	POWERGRID (Contractor through contract provisions)	Construction period	Complied/Being complied. 90-95% of the excavated soil is used for refilling/ resurfacing and rest is being disposed of along with other debris at selected location
26	Substation construction	Loss of soil	Loss of soil is not a major issue as excavated soil will be mostly reused for leveling and re-filling. However, in case of requirement of excess soil the same will be met from existing quarry or through deep excavation of existing pond or other nearby barren land with agreement of local communities	Borrow area sitting (area of site in m ² and estimated volume in m ³)	Acceptable soil borrow areas that provide a benefit - every 2 weeks	POWERGRID (Contractor through contract provisions)	Construction period	Complied/ Being Complied
		Water pollution	Construction activities involving significant ground disturbance (i.e. substation land forming) not undertaken during the monsoon season	Seasonal start and finish of major earthworks (P ^H , BOD /COD, Suspended solids, others)	Timing of major disturbance activities –prior to start of construction activities	POWERGRID (Contractor through contract provisions))	Construction period	Complied/ Being Complied

Cl. No./stage	Project activity	Potential Impact	Proposed mitigation measures	Parameter to be monitored	Measurement & frequency	Institutional responsibility	Implementation schedule	Compliance Status
27	Site clearance	Vegetation	Tree clearances for easement establishment to only involve cutting trees off at ground level or pruning as appropriate, with tree stumps and roots left in place and ground cover left undisturbed	Ground disturbance during vegetation clearance (area,m ²) Statutory approvals	Amount of ground disturbance – every 2 weeks Statutory approvals for tree clearances- once for each site	POWERGRID (Contractor through contract provisions)	Construction period	Regulated felling of tree in RoW is carried out with permission of owner & revenue authorities keeping required electrical clearance as per design. All felled trees are handed over to owners for disposal.
28	Tower erection Substation foundation- disposal of surplus earthwork/fill	Waste disposal	Excess fill from substation/tower foundation excavation disposed of next to roads or around houses, in agreement with the local community or landowner.	Location and amount (m ³)of fill disposal	Appropriate fill disposal locations – every 2 weeks	POWERGRID (Contractor through contract provisions)	Construction period	Complied/ Being Complied
29	Storage of chemicals and materials	Contamination of receptors (land, water, air)	Fuel and other hazardous materials securely stored above high flood level.	Location of hazardous material storage; spill reports (type of material spilled, amount (kg or m ³) & action taken to control and clean up spill)	Fuel storage in appropriate locations and receptacles – every 2 weeks	POWERGRID (Contractor through contract provisions)	Construction period	Stored at designated place only.
30	Construction schedules	Noise nuisance to neighbouring properties	Construction activities only undertaken during the day and local communities informed of the construction schedule.	Timing of construction (noise emissions, [dB(A)])	Daytime construction only – every 2 weeks	POWERGRID (Contractor through contract provisions)	Construction period	Construction activity restricted to day time only

Cl. No./stage	Project activity	Potential Impact	Proposed mitigation measures	Parameter to be monitored	Measurement & frequency	Institutional responsibility	Implementation schedule	Compliance Status
31	Provision of facilities for construction workers	Contamination of receptors (land, water, air)	Construction workforce facilities to include proper sanitation, water supply and waste disposal facilities.	Amenities for Workforce facilities	Presence of proper sanitation, water supply and waste disposal facilities – once each new facility	POWERGRID (Contractor through contract provisions)	Construction period	No complaints received. Regular monitoring is undertaken to ensure compliance of applicable contract provisions by contractor.
32	Influx of migratory workers	Conflict with local population to share local resources	Using local workers for appropriate asks	Avoidance/reduction of conflict through enhancement/augmentation of resource requirements	Observation & supervision—on weekly basis	POWERGRID (Contractor through contract provisions)	Construction period	Complied/ Being Complied. Local workforce being used based on skill and no incidents of conflict reported so far
33	Lines through farmland	Loss of agricultural productivity	Use existing access roads wherever possible	Usage of existing utilities	Complaints received by local people /authorities - every 4 weeks	POWERGRID (Contractor through contract provisions)	Construction period	No complaints received from local peoples/ authorities
			Ensure existing irrigation facilities are maintained in working condition	Status of existing facilities				
			Protect /preserve topsoil and reinstate after construction completed	Status of facilities (earthwork in m ³)				
			Repair /reinstate damaged bunds etc. after construction completed	Status of facilities (earthwork in m ³)				
		Loss of income.	Land owners/ farmers compensated for any temporary loss of productive land as per existing regulation.	Process of Crop/tree compensation in consultation with forest dept.(for timber yielding tree) and Horticulture deptt. (for fruit bearing tree)	Consultation with affected land owner prior to implementation and during execution.	POWERGRID	During construction	Construction being carried out mostly during post- harvest period. Till Dec.'20 an amount of Rs. 60935.13 lakhs has been paid towards Crop & Tree Compensation (for details refer Table -3).

Cl. No./stage	Project activity	Potential Impact	Proposed mitigation measures	Parameter to be monitored	Measurement & frequency	Institutional responsibility	Implementation schedule	Compliance Status
34	Uncontrolled erosion/silt runoff	Soil loss, downstream siltation	Need for access tracks minimised, use of existing roads.	Design basis and construction procedures (suspended solids in receiving waters; area re-vegetated in m ² ; amount of bunds constructed [length in meter, area in m ² , or volume in m ³])	Incorporating good design and construction management practices – once for each site	POWERGRID (Contractor through contract provisions)	Construction period	Complied/ Being Complied
			Limit site clearing to work areas					
			Regeneration of vegetation to stabilise works areas on completion (where applicable)					
			Avoidance of excavation in wet season					
			Water courses protected from siltation through use of bunds and sediment ponds					
35	Nuisance to nearby properties	Losses to neighbouring land uses/values	Contract clauses specifying careful construction practices.	Contract clauses	Incorporating good construction management practices – once for each site	POWERGRID (Contractor through contract provisions)	Construction period	Complied/ Being Complied
			As much as possible existing access ways will be used	Design basis and layout	Incorporating good design engineering practices – once for each site.			
			Productive land will be reinstated following completion of construction	Reinstatement of land status (area affected, m ²)	Consultation with affected parties – twice – immediately after completion of construction and after the			

Cl. No./stage	Project activity	Potential Impact	Proposed mitigation measures	Parameter to be monitored	Measurement & frequency	Institutional responsibility	Implementation schedule	Compliance Status
		Social inequities	Compensation will be paid for loss of production, if any.	Implementation of Tree/Crop compensation (amount paid)	Consultation with affected parties – once in a quarter	POWERGRID	Prior to construction	Compensation provided as per POWERGRID's procedure for tree/crop compensation. Till Dec.' 20 an amount Rs 60935.13 lakhs have been paid towards tree and crop compensation.
36	Flooding hazards due to construction impediments of natural drainage	Flooding & loss of soils, contamination of receptors (land, water)	Avoid natural drainage pattern/ facilities being disturbed/blocked/ diverted by on-going construction activities	Contract clauses (e.g. suspended solids and BOD/COD in receiving water)	Incorporating good construction management practices-once for each site	POWERGRID (Contractor through contract provisions)	Construction period	Complied/Being complied. Good construction management practices are employed at sites to avoid blockage of natural drainage and resultant flooding.
37	Equipment submerged under flood	Contamination of receptors (land, water)	Equipment stored at secure place above the high flood level(HFL)	Store room level to be above HFL (elevation difference in meters)	Store room level as per flood design-once	POWERGRID	Construction period	All equipment foundations are designed above HFL.
38	Inadequate siting of borrow areas (quarry areas)	Loss of land values	Existing borrow sites will be used to source aggregates, therefore, no need to develop new sources of aggregates	Contract clauses	Incorporating good construction management practices – once for each site	POWERGRID (Contractor through contract provisions)	Construction period	No extra aggregates not required till date. However, If needed it will be sourced through approved/registered borrow/quarry area.
39	Health and safety	Injury and sickness of workers and members of the public	Safety equipment's (PPEs) for construction workers Contract provisions specifying minimum requirements for construction workers camps	Contract clauses (18.1.3, 18.3.1.1, 18.3.1.4 etc.) (requirements of worker camp, number of incidents and total lost-work days caused by	Contract clauses compliance – once every quarter	POWERGRID (Contractor through contract provisions)	Construction period	Complied with project specific safety plan and general conditions of contract, which covers all applicable regulations. Photographs related to, safety training/

Cl. No./stage	Project activity	Potential Impact	Proposed mitigation measures	Parameter to be monitored	Measurement & frequency	Institutional responsibility	Implementation schedule	Compliance Status
			Contractor to prepare and implement a health and safety plan.	injuries and sickness)				awareness, safe work practices etc. are placed as Plate- 1 . Further, in view of COVID-19 outbreak, corrective measures in respect of health & hygiene, sanitation, adequate PPEs and social distancing norms are being strictly followed in all active sites as per Govt. of India guidelines and COVID specific guidelines issued by POWERGRID's Corporate Safety Cell (sample photos of such measures are placed at Appendix-2)
			Contractor to arrange for health and safety training sessions					
40	Inadequate construction stage monitoring	Likely to maximise damages	Training of environmental monitoring personnel	Training schedules	No. of programs attended by each person – once a year	POWERGRID	Routinely throughout construction period	Provided proper training and have very good env. monitoring process. Regular training being imparted to employees on E & S aspects. During reporting period such training programme were conducted online on 6 & 7 August, and 16 October, 2020. Training module is placed as Plate-2
			Implementation of effective environmental monitoring and reporting system using checklist of all contractual environmental requirements	Respective contract checklists and remedial actions taken thereof.	Submission of duly completed checklists of all contracts for each site - once			

Cl. No./stage	Project activity	Potential Impact	Proposed mitigation measures	Parameter to be monitored	Measurement & frequency	Institutional responsibility	Implementation schedule	Compliance Status
			Appropriate contact clauses to ensure satisfactory implementation of contractual environmental mitigation measures.	Compliance report related to environmental aspects for the contract	Submission of duly completed compliance report for each contract – once			Appropriate clause incorporated in contact provision for EMP implementation. Site managers review the implementation on daily basis.
Operation and Maintenance								
41	Location of line towers and line alignment & design	Exposure to safety related risks	Setback of dwellings to overhead line route designed in accordance with permitted level of power frequency and the regulation of supervision at sites.	Compliance with setback distances (“as-built” diagrams)	Setback distances to nearest houses – once in quarter	POWERGRID	During operations	Complied during survey. Route alignment criterion is part of survey contract which was followed thoroughly during construction and no such exposure to safety related risks is anticipated.
42	Line through identified bird flyways, migratory path	Injury/ mortality to birds, bats etc. due to collision and electrocution	Avoidance of established/ identified migration path (Birds & Bats). Provision of flight diverter/reflectors, elevated perches, insulating jumper loops, obstructive perch deterrents, raptor hoods etc., if applicable	Regular monitoring for any incident of injury/mortality	No. of incidents- once every month	POWERGRID	Part of detailed siting and alignment survey /design and Operation	As part of compliance to wildlife clearance condition, bird diverters & elephant proof fencing are being installed in the forest stretches of 400 KV Jigmeling-Alipurduar line
43	Equipment submerged under flood	Contamination of receptors (land, water)	Equipment installed above the high flood level (HFL) by raising the foundation pad.	Substation design to account for HFL (“as-built” diagrams)	Base height as per flood design – once	POWERGRID	During operations	Complied/ Being complied. Already part of detailed substation design. However, no flooding/ submergence of substation/ equipment has been reported so far.

CI. No./stage	Project activity	Potential Impact	Proposed mitigation measures	Parameter to be monitored	Measurement & frequency	Institutional responsibility	Implementation schedule	Compliance Status
44	Oil spillage	Contamination of land/nearby water bodies	Each transformer has a secure and impervious underlying pit with a storage capacity of at least 20% of the total oil volume of the transformer and the individual pits are connected to a main collection sump of capacity of 220% of largest transformer oil volume, which acts as a Secondary Containment, in case of a leakage. (refer para 8.6 of TS)	Substation bunding (Oil sump) ("as-built" diagrams)	Bunding (Oil sump) capacity and permeability - once	POWERGRID	During operations	Complied/ being complied Oil sump of sufficient capacity already provided for each transformer which was also part of detailed substation design. However, no spillage of transformer oil is reported so far.
45	SF ₆ management	Emission of most potent GHG causing climate change	Reduction of SF ₆ emission through awareness, replacement of old seals, proper handling & storage by controlled inventory and use, enhance recovery and applying new tech. to reduce leakage	Leakage and gas density/level	Continuous monitoring	POWERGRID	During Operations	Complied/ being complied. Regular monitoring and controlled inventory is ensured to avoid any leakage of SF ₆ .
46	Inadequate provision of staff/workers health and safety during operations	Injury and sickness of staff /workers	Careful design using appropriate technologies to minimise hazards	Usage of appropriate technologies (lost work days due to illness and injuries)	Preparedness level for using these technologies in crisis – once each year	POWERGRID	Design and operation	Complied/ being complied. All safety related precautions/ systems/ plans are in place. Proper safety training for workers are conducted on regular interval including mock drills on fire and other occupational hazards.
			Safety awareness raising for staff. Preparation of fire emergency action plan and training given to staff on implementing emergency action plan	Training/awareness programs and mock drills	Number of programs and per cent of staff /workers covered – once each year			

Cl. No./stage	Project activity	Potential Impact	Proposed mitigation measures	Parameter to be monitored	Measurement & frequency	Institutional responsibility	Implementation schedule	Compliance Status
			Provide adequate sanitation and water supply facilities	Provision of facilities	Complaints received from staff /workers every 2 weeks			
47	Electric Shock Hazards	Injury/ mortality to staff and public	Careful design using appropriate technologies to minimise hazards	Usage of appropriate technologies (no. of injury incidents, lost work days)	Preparedness level for using these technology in crisis- once a month	POWERGRID	Design and Operation	Complied/ being complied. Use of technology like tripping line/substation in milliseconds in case of any hazards. Boundary and Security fences are maintained at substation. Sufficient barriers with warning sinages are maintained at appropriate places of line/substation. Further, regular awareness/ mock drill on electrical safety and other occupational hazards are being undertaken
			Security fences around substations	Maintenance of fences	Report on maintenance – every 2 weeks			
			Barriers to prevent climbing on/ dismantling of towers	Maintenance of barriers				
			Appropriate warning signs on facilities	Maintenance of warning signs				
			Electricity safety awareness raising in project areas	Training/awareness programs and mock drills for all concerned parties	Number of programs and per cent of total persons covered –once each year			
48	Operations and maintenance staff skills less than acceptable	Unnecessary environmental losses of various types	Adequate training in O&M to all relevant staff of substations & line maintenance crews.	Training/awareness programs and mock drills for all relevant staff	Number of programs and per cent of staff covered – once each year	POWERGRID	Operation	Being complied. Regular trainings are being imparted to O & M staffs based on their skill at regular interval
			Preparation and training in the use of O&M manuals and standard operating practices					
49	Inadequate periodic environmental monitoring.	Diminished ecological and social values.	Staff to receive training in environmental monitoring of project O & M activities	Training/awareness programs and mock drills for all relevant staff	Number of programs and per cent of staff covered – once each year	POWERGRID	Operation	Complied/being complied.

Cl. No./stage	Project activity	Potential Impact	Proposed mitigation measures	Parameter to be monitored	Measurement & frequency	Institutional responsibility	Implementation schedule	Compliance Status
50	Equipment specifications and design parameters	Release of chemicals and gases in receptors (air, water, land)	Processes, equipment and systems using chlorofluorocarbons (CFCs) including halon, should be phased out and to be disposed of in a manner consistent with the requirements of the Govt.	Process, equipment and system design	Phase out schedule to be prepared in case still in use – once in a quarter	POWERGRID	Operation	Complied. Only CFCs free equipments are installed.
51	Transmission line maintenance	Exposure to electromagnetic interference	Transmission line design to comply with the limits of electromagnetic interference from overhead power lines	Required ground clearance (meters)	Ground clearance - once	POWERGRID	Operation	Complied. Designed as per guidelines of ICNIRP and ACGIH and checked by CPRI &M/s PTI, USA
52	Uncontrolled growth of vegetation	Fire hazard due to growth of tree/shrub /bamboo along RoW	Periodic pruning of vegetation to maintain requisite electrical clearance No use of herbicides/pesticides	Requisite clearance (meters)	Assessment in consultation with forest authorities- once a year (pre/post monsoon)	POWERGRID	Operation	Being complied
53	Noise related	Nuisance to neighbouring properties	Substations sited and designed to ensure noise will not be a nuisance	Noise levels {dB(A)}	Noise levels at boundary nearest to properties & consultation with affected parties if any - once	POWERGRID	Operation	Complied/ being complied.

SECTION-4: APPROACH & METHODOLOGY APPLIED FOR E & S MONITORING OF THE PROJECT

Monitoring is a continuous process throughout the Project life cycle starting from site selection to construction and maintenance stage. A Project Management Unit (PMU) has been set up headed by Executive Director (Corporate Planning) at headquarters to coordinate and implement all environment and social issues with the assistance of functional department like Environment & Social Management Department (ESMD), Engineering etc. Apart from this, site managers review the progress on daily basis and regular project review meetings held at least on monthly basis, chaired by the Executive Director of the region wherein the environmental aspects of the projects are discussed and remedial measures taken wherever required. The exceptions of these meetings will be submitted to the Directors and Chairman & Managing Director (CMD).

POWERGRID has a separate monitoring department which carries out real time monitoring of all parameters of project implementation including the environment and social issues. Such issues are discussed in detail during every quarter in the Project Review Meeting (PRM) Chaired by Director (Projects). CMD also takes periodic review of project implementation

A summarized environmental and social monitoring plan with implementation schedule at different stage of subprojects implementation is presented in the table below

Monitoring Tasks	Implementation Responsibility	Implementati on Schedule
Pre-Construction Phase		
Monitor contractor's detailed alignment survey to ensure relevant environmental and social mitigation measures in EMP have been included.	POWERGRID with the assistance of project implementation unit	Prior to POWERGRID approval of contractor's detailed alignment survey.
Construction Phase		
Regular monitoring and reporting of contractor's compliance with contractual environmental and social mitigation measures.	POWERGRID with the assistance of project implementation unit	Continuous as per ESA and EMP throughout construction period.
Operation and Maintenance Phase		
Observations during routine maintenance inspections of substations and transmission lines RoWs. Inspections will include monitoring implementation status of mitigation measures specified in EMP.	POWERGRID	As per POWERGRID inspection schedules and EMP provisions.

SECTION- 5: MONITORING OF ENVIRONMENTAL RECEPTORS/ ATTRIBUTES

It is evident that environmental impacts associated with power transmission projects are not far reaching as these developmental activities are non-polluting in nature and do not involve any disposal of solid waste, effluents and hazardous substances on land, air and water. Although, there are some localized impacts on natural resources like forest whenever transmission line passes through forest area, however, it can be avoided or minimized through careful route and site selection.

By adopting careful route selection through modern technique like GPS, GIS, remote sensing etc., the total forest involvement for proposed projects was restricted to 136.72 km which is only 5.94 % of total line length of 2298.10 km of all transmission lines under the project. This includes a 49.52 km line length through protected areas, which couldn't be avoided in spite of best efforts due to geographical constraint and lack of viable alternatives. However, by ensuring compliance with the conditions as specified in the Wildlife/forest clearances/permissions, the possible adverse impacts will be mitigated to large extent.

The proposed project doesn't have much anticipated impact on environmental attributes like air, water, soil etc. and are mostly concentrated to construction stage. Air quality impact is restricted to the construction phase only as no emissions to air takes place during ordinary operations of transmission lines. Impacts on air quality due to airborne dust in the vicinity of the work sites (at points along the route of the transmission line where towers are located) mainly result from excavation and construction activities and tail gases from construction equipments and vehicles. Since all the proposed alignments are accessible, no construction of access roads is envisaged thereby avoiding any airborne dust pollution in the vicinity. The construction activities are small scale and of a temporary nature. Moreover, the activities are not localized to any residential area and are widely dispersed that provide adequate buffering to air environment. Therefore, impacts on air quality from construction activities are considered insignificant. No liquid effluent is generated due to project activity. However, small quantities of domestic sewage from staff quarters and construction camp is generated which is discharged in local soak pits. Construction of transmission tower foundation, stringing and other activities are mostly manual in nature and use of heavy equipment or blasting is not envisaged. The main noise sources during the construction phase are from equipments and transportation vehicles. However, no significant noise level variation from construction related activities is anticipated.

SECTION:6 ANY OTHER ENVIRONMENTAL ASPECTS, IMPACTS (ACCIDENTS) OBSERVED DURING IMPLEMENTATION

The COVID-19 outbreak which is a totally unforeseen/unexpected pandemic has not only created unprecedented situation all over world but also impacted every aspects/activities including project implementation. Since such events are difficult to envisage impacts associated with such pandemic situations have not been specifically mentioned in existing EMPs which were prepared long back. However, the existing safety plan and other contract conditions particularly related to workers have provisions to deal with such extraordinary situations

Moreover, with the enforcement of The Disaster Management Act, 2005 and Epidemic Diseases Act, 1897, w.e.f March,2020 in whole of India which empower the Gol & State governments to take special measures and prescribe regulations in an epidemic to control the spread of the virus. Provisions of these acts which are also enforceable on all provide that all the protocols of Govt of India and State Govt in respect of COVID-19 are to be mandatorily followed. Individual protocols also required necessary permission from Govt. Therefore, POWERGRID and all its contractors are duty bound to follow the instructions of government including closing of all construction activities during lockdown and the guidelines issued after detailed assessment regarding unlock which allows work to start with certain conditions. Accordingly, POWERGRID Corporate Safety Cell has prepared a detailed guidelines/plan to be followed at all its establishments, Construction sites and O&M. Some photographs related proper health & hygiene, sanitization, availability of PPEs and adherence to social distancing norms

including daily awareness on COVID during Tool Box Talk etc. are placed as **Appendix-2**.

As regard Safety, all required measures are in place including due precautions/awareness programs as well as ensuring use of PPEs, which is evident from the fact that **no accidents (fatal or non- fatal) including major/minor injuries** were reported during the reporting period from any of the sites.

SECTION: 7 DETAILS OF GRIEVANCE REDRESSAL COMMITTEE, COMPLAINT RECEIVED AND ACTION TAKEN

Grievance Redress Mechanism (GRM) is an integral and important mechanism for addressing/resolving the concern and grievances in a transparent and swift manner. Many minor concerns³ of peoples are addressed during public consultation process initiated at the beginning of the project. For handling grievance, Grievance Redress Committee (GRC) has been established both at the project/scheme level and at Corporate/HQ level.

The corporate level GRC functions under the chairmanship of Director (Projects) and includes one representative from corporate ESMD who is conversant with the environment & social issues. Many minor issues related to assessment of compensation amount were brought to the notice of Project officials, which were resolved instantly and amicably through discussion & deliberation in the presence of Revenue/district officials. Details of Verbal/Written complaints and Court Cases are presented below in **Table-6 and Table 6a** respectively:

³ *The difference between minor concern and major concern is largely with respect to intensity of possible impacts. Concerns related to expected benefits of project, compensation procedure etc. are considered as minor, while those related to safety, human rights violation and violation of law are considered as major*
Semi-annual Safeguard Monitoring Report for the period up to December 2020

Table 6: Details of Verbal/Written Complaints

S. N.	Name of the line and section/part	Location	No. of complaint/ Grievance received	Type of complaints (Verbal/Written) & Name of complainants	Main Issue of complaints (such as compensation etc.)	Status of complaint
1.	800KV HVDC Raigarh-Pugalur TL	41/2	1	Gandla Sadanandam	Demand for high compensation	Matter resolved through discussion in consultation with Revenue officials.
2.	800KV HVDC Raigarh-Pugalur TL	31/4	1	Srinivas Reddy	Demand for high compensation	Matter resolved through discussion in Consultation with Revenue officials.
3.	800KV HVDC Raigarh-Pugalur TL	34/0 to 34/2	3	J. Sammiah, J. Ampaiah & J Rajaiah	Demand for high compensation	Matter resolved through discussion in Consultation with Revenue officials.
4.	800KV HVDC Raigarh-Pugalur TL	9/3	1	D Sattiah	Prepayment of compensation	Matter resolved amicably in consultation with by District Collector and political representatives.
5.	800KV HVDC Raigarh-Pugalur TL	64B/1	1	Veera Reddy	Route Diversion/ Compensation	Matter resolved through discussion. Compensation framework explained to complainant.
6.	800KV HVDC Raigarh-Pugalur TL	75/0	1	Manda Kanka Lakshmi	Route Diversion/ Compensation	Matter resolved through discussion. Compensation framework explained to complainant.
7.	800KV HVDC Raigarh-Pugalur TL	93/9	1	Written V Ranadheer Reddy S/o Indrasena Reddy	Compensation	Matter resolved through discussion. Compensation framework explained to complainant.
8.	800KV HVDC Raigarh-Pugalur TL	100A/6	1	Verbal/ Written Jatta Anjaiah, S/o Ramnarsaiah	Compensation	Matter resolved through discussion. Compensation framework explained to complainant.
9.	800KV HVDC Raigarh-Pugalur TL	101/0	1	Verbal/ Written Odapalli Dilto Purnachandran, s/o Pandurangam	Route Diversion/ Compensation	Matter resolved through discussion. Compensation framework explained to complainant.
10.	800KV HVDC Raigarh-Pugalur TL	101A/5	1	Written P Venkatnarsimha Reddy, S/o Hanma	Compensation	Matter resolved through discussion. Compensation framework explained to complainant.

				Reddy		
11.	800KV HVDC Raigarh-Pugalur TL	101A/8	1	Written Alimineti Indra Reddy, S/o Krishna Reddy	Compensation	Matter resolved through discussion. Compensation framework explained to complainant.
12.	800KV HVDC Raigarh-Pugalur TL	103/3	1	Verbal/Written Gosukonda Sridhar Reddy, S/o Raghava Reddy	Compensation	Matter resolved through discussion. Compensation framework explained to complainant.
13	800KV HVDC Raigarh-Pugalur TL	116/1	1	Verbal/Written Pabbu Raghupathi goud, S/o Mallaiah	Route Diversion	Matter resolved through discussion. Compensation framework explained to complainant.
14.	800KV HVDC Raigarh-Pugalur TL	117/0	1	Verbal /Written Dolphin Foods India Pvt. Ltd.	Route Diversion	Matter resolved through discussion.
15.	800KV HVDC Raigarh-Pugalur TL	118A/0	1	Verbal Siddipeta Laxmi, w/o Ranga Reddy	Route Diversion/ Compensation	Matter resolved through discussion. Compensation framework explained to complainant.
16.	800KV HVDC Raigarh-Pugalur TL	119/0	1	Verbal /Written Kolanu Anji Reddy, s/o Narsi Reddy	Route Diversion/ Compensation	Matter resolved through discussion. Compensation framework explained to Complainant.
17.	800KV HVDC Raigarh-Pugalur TL	120A/0	1	Written Girkiti Laxminarayana, s/o Balraju	Route Diversion/ Compensation	Matter resolved through discussion. Compensation framework explained to complainant.
18.	800KV HVDC Raigarh-Pugalur TL	121/0	1	Written Ramaswamy Latchi Reddy, s/o Devi Reddy	Route Diversion/ Compensation	Matter resolved through discussion. Compensation framework explained to complainant.
19	800KV HVDC Raigarh-Pugalur TL	122/0	1	Verbal Siga Ponnamma, w/o Yellaiah	Route Diversion/ Compensation	Matter resolved through discussion. Compensation framework explained to complainant.
20	800KV HVDC Raigarh-Pugalur TL	122A/0 & 122B/0	1	Verbal Sukka Ramulu s/o Narsimha	Route Diversion/ Compensation	Matter resolved through discussion. Compensation framework explained to complainant.
21	800KV HVDC Raigarh-Pugalur TL	122C/0 & 122D/0	1	Verbal Meesala Jangaiah s/o Narsaiah	Route Diversion/ Compensation	Matter resolved through discussion. Compensation framework explained to complainant.
22	800KV HVDC	160/3	1	Written	Compensation	Matter resolved through discussion.

	Raigarh-Pugalur TL			Mrs. P.Saritha W/o Raja Goud		Compensation framework explained to complainant.
23	800KV HVDC Raigarh-Pugalur TL	152A/6	1	Verbal Mr. Shankar	Compensation	Matter resolved through discussion. Compensation framework explained to complainant.
24	800KV HVDC Raigarh-Pugalur TL	147-150	1	Verbal /Written Butterfly City	Demand to line diversion	Matter resolved through discussion.
25	800KV HVDC Raigarh-Pugalur TL	143A/1	1	Written/Verbal Mr..J. Panthay Naik	Compensation	Matter resolved through discussion. Compensation framework explained to complainant.
26	800KV HVDC Raigarh-Pugalur TL	140/0	1	Verbal Mr. Gopi Reddy Chandrasekhar Reddy	Demand to line diversion	Matter resolved through discussion.
27	800KV HVDC Raigarh-Pugalur TL	135/4	1	Verbal Mr. Mallesh	Compensation	Matter resolved through discussion. Compensation framework explained to complainant.
28	800KV HVDC Raigarh-Pugalur TL	132-133	1	Verbal JB infra	Objection to line construction	Matter resolved through discussion.
29	800KV HVDC Raigarh-Pugalur TL	129/0	1	Verbal Mr. Mohan Reddy	Compensation	Matter resolved through discussion.
30	800KV HVDC Raigarh-Pugalur TL	127/4 & 127/5	1	Verbal Mr. Koteswara Rao	Compensation	Matter resolved through discussion.
31	800KV HVDC Raigarh-Pugalur TL	126A/0	1	Verbal, Mr.Raguveera Reddy	Damage to Gate, Water pipe, Fencing & Granite stone	Instructions issued to the Contractor (M/s KPTL agency) to do the repair work as soon as possible. Issue resolved.
32	800KV HVDC Raigarh-Pugalur TL	126B/0	1	Written	Land Dispute	Pending with MRO office, Ibrahimpatnam.
33	800KV HVDC Raigarh-Pugalur TL	169/0	1	Legal Notice	Land Dispute	Matter resolved through discussions.
34	800KV HVDC Raigarh-Pugalur TL	171/5	1	Request letter	Diversion of line	Matter resolved through discussions.
35	800KV HVDC Raigarh-Pugalur TL	206/0	2	Written K. Anasuyamma	Land dispute	Matter resolved. Work completed.
36	800KV HVDC	207A/2	1	Written	Higher compensation	Issue resolved through discussion and work

	Raigarh-Pugalur TL			G.P.Venkateswarul	for land	completed.
37	800KV HVDC Raigarh-Pugalur TL	207A/6	1	Written Chinna Musalanna	Higher compensation for land	Issue resolved through discussion and work completed.
38	800KV HVDC Raigarh-Pugalur TL	208/0	1	Written Patannasimakhathu	Higher compensation for land	Issue resolved through discussion and work completed
39	800KV HVDC Raigarh-Pugalur TL	208/1	1	Written Seelam Rama Krishnamma	Higher compensation for land	Issue resolved through discussion and work completed.
40	800KV HVDC Raigarh-Pugalur TL	211/1	1	Written Mallela Jyothi	Higher compensation for land and crop	Issue resolved through discussion and work completed.
41	800KV HVDC Raigarh-Pugalur TL	322/2	1	Written M.Madhu Sudhan Reddy	Route Diversion	Issue resolved through discussion and work completed.
42	800KV HVDC Raigarh-Pugalur TL	292/0	1	Written T Anjanamma	Dispute area	Issue resolved by intervention of MRO Office.
43	800KV HVDC Raigarh-Pugalur TL	283/0	1	Written Gangadhar	Crop Compensation	Matter resolved amicably through discussions.
44	800KV HVDC Raigarh-Pugalur TL	313/2	1	Written P Ammani	Compensation for Bore well	Digging of Bore well completed and issue resolved.
45	800KV HVDC Raigarh-Pugalur TL	328/1	1	Written Siva Reddy	Land Compensation	Issue resolved through discussion and work completed.
46	800KV HVDC Raigarh-Pugalur TL	304/7	1	Written Erical Reddy Sanka Reddy	Land Compensation	Issue resolved.
47	800KV HVDC Raigarh-Pugalur TL	335A/2	1	Written, Iqbal Ahmed, Siraz Ahmed, Ahmed Bazeer	Compensation	Issue resolved through discussion and work completed.
48	800KV HVDC Raigarh-Pugalur TL	345A/2	1	Written O. Ramana	Land compensation dispute between 2 owners	Issue resolved.
49	800KV HVDC Raigarh-Pugalur TL	351/1	1	Written P. Bhaskar Reddy	Land compensation	Issue resolved through discussion and work completed.
50	800KV HVDC Raigarh-Pugalur TL	352/1	1	Written Y. Mal Reddy	Land compensation dispute between 2 owners	Issue resolved.
51	800KV HVDC	375/0 –	1	Written	Tree compensation	Issue resolved through discussion

	Raigarh-Pugalur TL	375/1		A. Sumathi		and work completed.
52	800KV HVDC Raigarh-Pugalur TL	376/0	1	Written G.Dileep Kumar	Land compensation dispute between 2 owners	Issue resolved through discussion and work completed.
53	800KV HVDC Raigarh-Pugalur TL	376/0 – 376/1	1	Written S. Krishnamoorthy	Tree compensation dispute between 2 owners	Issue resolved.
54	800KV HVDC Raigarh-Pugalur TL	382/5, 6,7	1	Written Mohan Reddy	Land compensation dispute between 2 owners	Issue resolved.
55	800KV HVDC Raigarh-Pugalur TL	389/0	1	Written A Kumari	Land compensation dispute between 2 owners	Issue resolved.
56	800KV HVDC Raigarh-Pugalur TL	392/0	1	Written Muthu Krishna Reddy	Crop compensation	Matter resolved through discussions.
57	800KV HVDC Raigarh-Pugalur TL	394/0	1	Written Varalashmi	Land compensation dispute between 2 owners	Matter referred to MRO Office but work is completed.
58	800KV HVDC Raigarh-Pugalur TL	400/1- 400/2	1	Written A Arumugam	Tree compensation dispute between 2 owners	Matter referred to MRO Office but work is completed.
59	800KV HVDC Raigarh-Pugalur TL	Modakur chi Village	1	Written A. Dakshinamurthy, Modakurchi Village	Request for compensation for drip irrigation pipe line	The complainant is informed that due compensation as assessed by the concerned department shall be paid. Issue resolved.
60	800KV HVDC Raigarh-Pugalur TL	Modakur chi, Taluk, Erode	1	Written Ms. Pravina, Modakurchi Taluk, Erode	Request for laying underground cable in place of overhead line	The complainant is informed that underground cabling is not feasible and unviable due to techno economic reasons. Issue resolved.
61	800KV HVDC Raigarh-Pugalur TL	Nallamp alli, Taluk- Dharmap Uri	1	Written Mr.Marimuthu Gounder, Nallampalli Taluk, Dharmapuri	Request to provide house compensation	The complainant is informed about the availability of sufficient clearance for the existing house as per CEA norms. Issue resolved.
62	800KV HVDC Raigarh-Pugalur TL	MD 68/0	1	Muniyammal	Structures under the line	Issue resolved
63	800KV HVDC Raigarh-Pugalur TL	MD 80/0	1	Muniyan	Structures under the line	Issue resolved

64	800KV HVDC Raigarh-Pugalur TL	MD 74/0	1	Planisamy	Structures under the line	Issue resolved
65	800KV HVDC Raigarh-Pugalur TL	MD 48/0-48/1	1	Murugesan	Structures under the line	Issue resolved
66	800KV HVDC Raigarh-Pugalur TL	MD 88/0	1	Arumugam	Structures under the line	Issue resolved
67	800KV HVDC Raigarh-Pugalur TL	MD 27/0-27/1	1	Govindaraj	Structures under the line	Issue resolved
68	800KV HVDC Raigarh-Pugalur TL	MD 83/0	1	Deivani	Structures under the line	Issue resolved
69	800KV HVDC Raigarh-Pugalur TL	MD 27/3-28/0	1	Madesh	Structures under the line	Issue resolved
70	800KV HVDC Raigarh-Pugalur TL	MD 38/0	1	Sarasu	Structures under the line	Issue resolved
71	800KV HVDC Raigarh-Pugalur TL	MD 82/0	1	Maatukaran	Structures under the line	Issue resolved
72	800KV HVDC Raigarh-Pugalur TL	131/0	1	Written Sh Khemraj Raghunath Pawade	Compensation	Issue resolved in consultation with Revenue Authorities. Work Completed.
73	800KV HVDC Raigarh-Pugalur TL	131/3	1	Written Mr. S Krishna Dhumne	Compensation	Issue resolved in consultation with Revenue Authorities. Work Completed.
74	800KV HVDC Raigarh-Pugalur TL	43/1,44/0, 44/1,44/2, 45/0, 45/1	3	Written Villagers of Yedapur, Sonpur and Andhadhi of Kurkheda Tehsil	Claim for loss of livelihood due to tree cutting in forest area.	Issue resolved. Compensation against loss of livelihood due to tree cutting in forest area paid as per the directions of the Collector, Gadchiroli
75	800KV HVDC Raigarh-Pugalur TL	3/0-3/1	3	Written Uttam Singh, Padman Patel, S. Lochana Patel	Construction of House in Corridor beneath	With intervention of Revenue Dept. matter resolved. Work Completed.
76	800KV HVDC Raigarh-Pugalur TL	2A/2	3	Verbal Dekumar S/o Dhaniram	Higher Compensation	With intervention of Revenue Dept. matter resolved. Work Completed.
77	800KV HVDC Raigarh-Pugalur TL	3/0	2	Verbal Geeta Kumar, Rajesh, Kamlesh	Higher Compensation	With intervention of Revenue Dept. matter resolved. Work Completed
78	800KV HVDC Raigarh-Pugalur TL	3/1	3	Verbal Hiradhar, Kamal,	Higher Compensation	With intervention of Revenue Dept. matter resolved. Work Completed.

				Nirmala, Ashok Kumar, KrishnaKumar		
79	800KV HVDC Raigarh-Pugalur TL	3/2	2	Verbal Jayram. S. Dolnarayan, Satyanarayan	Higher Compensation	With intervention of Revenue Dept. matter resolved. Work Completed.
80	800KV HVDC Raigarh-Pugalur TL	5/0	2	Verbal Brijmohan S/o Mahadev	Higher Compensation	With intervention of Revenue Dept. matter resolved. Work Completed.
81	800KV HVDC Raigarh-Pugalur TL	6/0	2	Verbal Lakhanlal, Purushottam Rohit Kumar	Higher Compensation	With intervention of Revenue Dept. matter resolved. Work Completed.
82	800KV HVDC Raigarh-Pugalur TL	6/1	1	Verbal J. Chaudhari S/o Alekhram	Higher Compensation	With intervention of Revenue Dept. matter resolved. Work Completed.
83	800KV HVDC Raigarh-Pugalur TL	7/0	2	Verbal Sadhuram S/o Balram	Higher Compensation	With intervention of Revenue Dept. matter resolved. Work Completed.
84	800KV HVDC Raigarh-Pugalur TL	7A/0	2	Verbal Sahebram S/o Jagatram	Higher Compensation	
85	800KV HVDC Raigarh-Pugalur TL	5/1	2	Verbal Muralidhar Govinda Gurnule	Higher Compensation	With intervention of Revenue Dept. matter resolved. Work Completed.
86	800KV HVDC Raigarh-Pugalur TL	4/1	1	Verbal Asaram Rangaji Darwade	Higher Compensation	With intervention of Revenue Dept. matter resolved. Work Completed.
87	Disconnection of LILO of Dhauliganga – Bareilly at	AP-01/0	1	Verbal Jagdish Ram	Higher Compensation	Matter resolved through discussion. Compensation framework explained to complainant.
88	Pithoragarh and connecting it to Jauljivi 400/220 KV S/s at 220 KV level	AP-20/0	1	Verbal Mahesh Chandra Tiwari	Delay in compensation	Delay of case explained and matter resolved. Land owner received compensation
89		AP-67/0	1	Verbal Mr. Namraj Pal	Asking for Land Compensation in Tower base	Matter Resolved through discussion. Compensation framework explained to complainant.
90	LILO of both Ckt of 400kV Dhauliganga- Bareilly (PG) at	AP-02/0 Loop Out	1	Written Yogendra Pal	Asking for four times of circle rate for Land Compensation	Compensation framework explained to complainant. Matter resolved through discussion.

	Baram Jauljivi S/s.					
91	400 KV D/C (Quad) Jigmelling-Alipurduar	80/0 – 83/0	1	Written Sangsar Narzary	Demand for change in Line route	As per the request of villagers and as instructed by concerned Revenue Official, the line has been shifted with a few meters increase in line length. Matter resolved.
92	400 KV D/C (Quad) Jigmelling-Alipurduar	128 nos. locations in forest area	1	Verbal	Compensation towards crops, trees and land	Payment towards damages (crops, tree and land) is being made as per the instructions and rate list issued by the Local Administrative authority (BTC).
93	400 KV D/C (Quad) Jigmelling-Alipurduar	73/0	1	Written Mrs. Chandana Narzary	Shifting of Tower location	Matter resolved amicably through discussion.
94	400 KV D/C (Quad) Jigmelling-Alipurduar	87/0	1	Verbal Paramanada Brahma	Demand for high compensation	Matter resolved with discussion
95	400 KV D/C (Quad) Jigmelling-Alipurduar	89/2	1	Verbal Bini Narzary and Narad Mushahary	Land dispute	Matter resolved in close consultation with Revenue Authority.
96	400 KV D/C (Quad) Jigmelling-Alipurduar	91/0	1	Verbal Preetam Brahma Choudhury	Demand for high compensation	Matter referred to Revenue Authority for early resolution. Matter resolved.
97	400 KV D/C (Quad) Jigmelling-Alipurduar	16/2	2	Written Mr Babul Ball Mr. Pintu Ball	Compensation	Compensation framework explained and paid as per standard practice of POWERGRID. Issue resolved.
98	400 KV D/C (Quad) Jigmelling-Alipurduar	16/0	1	Written Mrs Shiksha Rani Ball	Compensation	Compensation framework explained and Issue resolved.
99	400 KV D/C (Quad) Jigmelling- Alipurduar	74/0- 74/1	1	Written Jiban Krishna Saha	Compensation	Compensation framework explained and paid as per standard practice of POWERGRID. Issue resolved.
100	400 KV D/C (Quad) Jigmelling- Alipurduar	NA	1	Written Utpal Kumar Roy	Compensation	After visiting the site it was observed that no tower of POWERGRID is passing through the complainant's land. Issue resolved.
101	400 KV D/C (Quad) Jigmelling- Alipurduar	53/0- 53/1	2	Written Mr. Someswar Mr. Khgen Dakua	Compensation	Matter resolved in consultation with SDO, Tufanganj.
102	400kV D/C Behrampore – Bheramera Phase II	1/0-1/1- 1/2	3	Written Dharmaraj Ghosh Natraj Ghosh	Compensation	The issue has been sorted out by I/C BHP and assed amount has been disbursed as per the standard practice of POWERGRID.

				Satya Prakash Ghosh		Issue resolved.
103	400kV D/C Behrampore – Bheramera Phase II	13/0	1	Verbal Kabir hossain	Compensation	Demanding high compensation. Now the matter has been closed by Sagardighi BDO. All work completed.
104	400kV D/C Behrampore – Bheramera Phase II	64/2, 65/0, 65A/0 & corridor	6	Written Nur Hussain Anarul Islam Mondal Sariful Mondal Musaraf H Mondal Azad Khan Ruban Ali Biswas	Compensation	Asking to change the route for constructing Banglar Bare Project. Matter has been sorted out by SDO Domkal. All work has been completed.
105	400kV D/C Behrampore – Bheramera Phase II	73/1	1	Verbal Seraj Mondal	Compensation	Negotiated as per standard practice of POWERGRID. Matter has been closed.
106	400kV D/C Behrampore – Bheramera Phase II	74/0	1	Verbal Rashid Mondal	Compensation	Matter has been sorted out in coordination with SDO Domkal. Matter has been closed.
107	± 320 kV Pugalur – Trichur HVDC TL			Farmers of Kinathukadavu taluk, Coimbatore district	Enhanced land compensation	The land compensation rate has already been issued by District Collector and the same has been informed to the applicants. The issue has been amicably settled and works successfully completed.
108	± 320 kV Pugalur – Trichur HVDC TL			Farmers of Suler, Kinathukadavu & Pollachi taluks, Coimbatore district	Enhanced land compensation	The land compensation rate has already been issued by District Collector and the same has been informed to the applicants. RDO/Pollachi & Tahsildar, Kinathukadavu convened a tri-partite meeting with land owners in presence of POWERGRID & Revenue officials, and gave assurance regarding timely payment of land compensation. Issue resolved.

Table 6a: Details of Court Cases

S N	Name of the Line and section/Part	Location	Name of Complainant/s	Main Issue of Case (such as compensation etc)	Name of the Court	Status of complaint
1	800KV HVDC Raigarh- Pugalur TL	12/0	Mrs. Renuka	Compensation	High Court Hyderabad	In response to the petition filed by the owner, POWERGRID filed the Caveat. However, out of court settlement reached with the complainant and work executed.
2	800KV HVDC Raigarh- Pugalur TL	12/2	Mrs Roshi Reddy	Demanding high value compensation	High Court Hyderabad	In response to the petition filed by the owner, POWERGRID filed the Caveat. However, out of court settlement reached with the complainant and work executed.
3	800KV HVDC Raigarh- Pugalur TL	118/0	NCL Industries	Route Diversion	Session Court, Yadadri Bhongir	Petitioner's plea rejected by the Session Court and Foundation work completed. However, the complainant still has objection for tower erection. Efforts are on to resolve the issue through discussions.
4	800KV HVDC Raigarh- Pugalur TL	123A/0-124A/0	Y. Kiran Kumar	Route Diversion	High Court, Hyderabad	Land owner filed the case in High Court. No interim relief given to land owner in the verdict. Work completed.
5	800KV HVDC Raigarh- Pugalur TL	158/0	Harsha Verdan Reddy	Route Diversion	High Court, Hyderabad	Land owner filed the case in High Court. No interim relief given to land owner in the verdict. Work completed.
6	800KV HVDC Raigarh- Pugalur TL	130/0 - 132/0	Mr. Murali	Route Diversion	High Court, Hyderabad	Land owner filled case in High Court. However, Matter has been solved through discussion. Work completed.
7	800KV HVDC Raigarh- Pugalur TL	322/2	M. Madhu Sudhan Reddy	Route Diversion	Hon'ble High Court Hyderabad and Guntur	Matter disposed by court. Work completed.

8	800KV HVDC Raigarh- Pugalur TL	383/4 Corridor	R Ratnamma, Reddy Sunil, K. Subra- manyam Setty	Corridor Objection	Hon'ble High Court Hyderabad and Amaravathi	To be listed for final hearing. No interim relief granted. Work completed.
9	800KV HVDC Raigarh- Pugalur TL	387/1	Sarath Babu	Land compensation	Chittoor Court	Case is pending. However, work completed. Next date of hearing is on 20.10.2020.
10	800KV HVDC Raigarh- Pugalur TL	9/0, 9/1	1	Seeking enhanced compensation	WP No.28892/ 2018 High Court of Madras	Disposed and referred back to the DC, Dharmapuri. As per direction of court, enquiry conducted by DC/Dharmapuri. Orders awaited
11	800KV HVDC Raigarh- Pugalur TL	222/2 - 222/3 (Corridor	1	Rerouting of the line.	CRP No: 3388/ 2018. High Court of Judicature at Madras	Pending with Hon'ble High Court at Madras
12	800KV HVDC Raigarh-Pugalur TL	8/2 - 9/0 (corridor)	10	Rerouting of the line.	28532-28542/ 2018, 28554- 28559/2018. High Court of Judicature at Madras	Case disposed.
13	800KV HVDC Raigarh- Pugalur TL	8/2-9/0	1	Rerouting of the line.	28554/2018. High Court of Judicature at Madras	Disposed off and referred to the DC, Dharmapuri, enquiry completed. DC Orders awaited.
14	800KV HVDC Raigarh- Pugalur TL	8/2-9/0	1	Seek removal of police protection for construction work in progress.	CRL O P No: 29812/2018. High Court of Judicature at Madras	Counter filed by Inspector of police, Kumarapalaym. Pending with Hon'ble High Court at Madras

15	800KV HVDC Raigarh- Pugalur TL	116/2	Bhaskar Keshav Urkude	Demand for high compensation	District Court, Chandrapur	The matter is currently under the consideration of the court. However, efforts are on to settle the matter through discussion.
16	800KV HVDC Raigarh- Pugalur TL	116/2	Ramesh Warghantiwar, Nihal Warghantiwar	Demand for high compensation	District Court, Chandrapur	The matter is currently under the consideration of the court. However, efforts are on to settle the matter through discussion.
17	800KV HVDC Raigarh- Pugalur TL	121/0-123/0	V. Maganathan, T S Govindhan Janaki, Ravi Murugan, Krishnan Mahalingam Krishnan Veerasamy Kalaselvi	Structures under the line		Closed
18	800KV HVDC Raigarh-Pugalur TL	43/0, 44/0, 55/0 & 56/0	R Raja, P Munusamy, M Ammasi, K Kannammal	RoW		Closed
19	800KV HVDC Raigarh-Pugalur TL	115/1	Rakesh Arun, Wargantiwar	Demand for high compensation and increase the area calculated for compensation	M.C.A. No. 28 of 2019, District Court, Chandrapur	The case was last listed on 01.02.2021. Next date of hearing is 17.03.2021.
20	800KV HVDC Raigarh-Pugalur TL	115/1	Nihal Kishore, Wargantiwar	Demand for high compensation and increase the area calculated for compensation	M.C.A. No. 26 of 2019, District Court, Chandrapur	The case was last listed on 01.02.2021. Next date of hearing is 17.03.2021.

21	800KV HVDC Raigarh-Pugalur TL	116/2	Giridhar Dadaji, Urkude	Demand for high compensation and increase the area calculated for compensation	M.C.A. No. 27 of 2019, District Court, Chandrapur	The case was last listed on 01.02.2021. Next date of hearing is 17.03.2021.
22	400 kV D/C Jigmeling- Alipurduar	5/0	Harimohan Oraon	Higher Compensation	High Court Kolkata	Case disposed off by Hon'ble court. Compensation has been paid as per the direction of court.
23	400 kV D/C Jigmeling-Alipurduar TL	84/0-85/0	Manoranjan Brahma	Route Diversion, Land owner going to set up a stone crusher plant in the corridor area.	Civil Judge, Kokrajhar district, Assam	Hearing and submission of counter documentation going on.
24	400kV D/C Behrampore – Bheramera Phase II	73/1-74/0 (Corridor)	Sajahan Biswas Sourav Biswas Mirajul Islam Saiuddin Biswas Giyasuddin Biswas Numuddin Biswas	Demanding very high compensation	High Court Kolkata	The case disposed by Hon'ble High Court and forwarded to DM, Murshidabad for necessary compensation (if any).
25	± 320 kV Pugalur – Trichur HVDC TL	80/0-86/0	Sh. Mochel Swamy & 4 Others	Route diversion	WPC 7885/2020	Case dismissed.
26	± 320 kV Pugalur – Trichur HVDC TL	80/0	Sh.Afsal Hussain	Route diversion	WPC 12310/20	Case dismissed.
27	± 320 kV Pugalur – Trichur HVDC TL	80/0-86/0	Sh. Mochel Swamy & 4 Others	Police Harassment	WPC12438/20	Case dismissed.
28	± 320 kV Pugalur – Trichur HVDC TL	81/2 & 81/3	Sh.Gnana Durairaj Sh.Rajalingam Smt.Manonmani	Route diversion	OS-162/20, IA-1166	IA vacated Posted for 29.09.2020.

29	± 320 kV Pugalur – Trichur HVDC TL		P. Ponnusamy	Route diversion	WP No.32668/2019	Case dismissed. Case referred to District Collector, Tiruppur to pass appropriate orders District Collector, Tiruppur took hearing on 09.01.2020, and passed Order (enter upon permission) on 28.01.2020
30	± 320 kV Pugalur – Trichur HVDC TL		P. Ponnusamy	Challenging the order issued by District Collector on 28.01.2020 against WP No.32668/2019	WP No.9104 of 2020	Case being heard in Madras High Court. 2 hearings are completed and judgement order pending.
31	± 320 kV Pugalur – Trichur HVDC TL	85/0-85/1	Sh. Linet Mathew & Sh. Minet Mathew	Diversion of line	DC/DM 7781/2020 Dt: 10.08.2020	Case dismissed
32	± 320 kV Pugalur – Trichur HVDC TL	85/0-85/1	Sh. Linet Mathew & Sh. Minet Mathew	Diversion of line	WP(C) 17446 / 2020 Dt: 21.08.2020	Case dismissed
33	± 320 kV Pugalur – Trichur HVDC TL	85/0-85/1	Sh. Minet Mathew	Challenging DC orders	WP(C) 18993/2020 Dt: 14.09.2020	Case dismissed
34	± 320 kV Pugalur – Trichur HVDC TL	98/2-99/0	Sh. Sanmughadas	Dispute of ownership & to stop payment	OS-240/2020 Dt: 24.09.2020	Ongoing
35	400 kV D/C (Twin HTLS) Bhadla 2 – Bhadla (PG) TL	29A/2-30/1	Devi Singh Khiw Singh	PIL against passing the line through Oran (village grass land: non-notified)	Hon'ble Court AMJM, Srikolayat, Bikaner, Rajasthan	Request for stay rejected. However, hearing and submission of counter documentation under progress.
36	400 kV D/C (Twin HTLS) Bhadla 2 – Bhadla (PG) TL	31/3-31A/1	Prithiraj Charan Maniraj Charan	Claim against proposed establishment of solar power generation park falling under line corridor.	Civil Court, Phalodi, Jodhpur, Rajasthan	Request for stay rejected. However, hearing and submission of counter documentation under progress.
37	400 kV D/C (Twin	31/3-	Smt. Dariyan	Route diversion,	Civil Court,	Request for stay rejected. However, hearing

	HTLS) Bhadla 2 – Bhadla (PG) TL	31A/1	Kanwar Ghanashyam Singh Ganeshdan Charan	Land owner going to set up a solar power production plant in the corridor area.	Phalodi, Jodhpur, Rajasthan	and submission of counter documentation under progress.
38	400 kV D/C (Twin HTLS) Bhadla 2 – Bhadla (PG) TL	31/3-31A/1	Smt. Aasha Kanwar	Route diversion, Land owner going to set up a solar power production plant in the corridor area.	Civil Court, Phalodi, Jodhpur, Rajasthan	Request for stay rejected. However, hearing and submission of counter documentation under progress.
39	400 kV D/C (Twin HTLS) Bhadla 2 – Bhadla (PG) TL	31/1-31/2	Mr. Mulsingh	Route diversion, Land owner going to set up a solar power production plant in the corridor area.	Civil Court, Phalodi, Jodhpur, Rajasthan	Request for stay rejected. However, hearing and submission of counter documentation under progress.
40	400 kV D/C (Twin HTLS) Bhadla 2 – Bhadla (PG) TL	31A/2-31A/3	Sardul Singh Kulwant Singh Rajveer Singh	Route diversion, Land owner going to set up a solar power production plant in the corridor area.	Civil Court, Phalodi, Jodhpur, Rajasthan	Request for stay rejected. However, hearing and submission of counter documentation under progress.
41	400 kV D/C (Twin HTLS) Bhadla 2 – Bhadla (PG) TL	31A/8-31B/0	Sh. Manoharlal and 2 others	Route diversion, Land owner going to set up a solar power production plant in the	Civil Court, Phalodi, Jodhpur, Rajasthan	Request for stay rejected. However, hearing and submission of counter documentation under progress.

SECTION: 8 CONCLUSIONS

It may be noted from above that the project activities are non-polluting in nature and don't have significant adverse impacts on environment except the involvement of 800.90 ha. (5.94 %) of forest area, including 234.054 Ha of protected areas. However, with the condition of raising the compensatory afforestation on double the area and measures like extended tower to reduce tree felling will go a long way in mitigating the likely loss of vegetation. Similarly, with the implementation of measures suggested in in the Wildlife/forest clearances/permissions for the Wildlife Area involved, the possible adverse impacts will be negligible. Though, some environmental impacts are anticipated mostly during construction period, these are being mitigated successfully by implementing the EMP. POWERGRID approach of project implementation involving selection of optimum route before design stage, regular consultation with local population, proper implementation of EMP and monitoring mechanism throughout project life cycle supported by strong institutional arrangement has considerably nullified the adverse impacts arising out of project activities. Moreover, by implementing high Capacity Corridor, there will be optimization of RoW resulting in reduction in land requirement.

As far as social impacts are concerned, it is vivid that all efforts have been made to minimize the social impacts associated with the project. The endeavor to minimize the social impacts started right from the selection of land for the proposed substations. In the instant project, out of total 9 nos. of new/ extension of substations, land for 8 substations was managed in the premises of existing substations only through meticulous planning and required due diligence, which reduced the associated social impacts to a large extent. Only in case of 400/220 KV Jauljivi (GIS) substation fresh private land to the extent of 11.104 acre was secured through willing buyer- willing seller basis on negotiated rate without the involvement of applicable land acquisition regulations. Hence, there are no Project Affected Persons and resultant R & R issues envisaged under the project on account of substation land.

Similarly, during construction of transmission lines, efforts were made to avoid damage to standing crops and trees. However, in unavoidable cases, compensation was paid at market rate for damage to standing crops. Compensation process starts with a notice under Indian Telegraph Act, which is served to the landowners informing them that the proposed transmission line is being routed through the property of the individual concerned. The notice shall contain the particulars of the land, ownership details and the details of the trees/crops inevitability likely to be damaged during the course of the construction of the proposed transmission line and acknowledgement received from land owner. A copy of said notice is further marked to the Revenue Officer, who has been authorized by the State Govt. for the purpose of assessment/valuation and disbursement of compensation to the affected parties, if any objection raised by land owners, the same is sorted out by site in charge of POWERGRID. On approval of compensation, the revenue officer shall further intimate the amount payable to the different land owners and POWERGRID arranges the payment directly to the affected persons through online transfer after due verification of the documents in presence of other witnesses.

Accordingly, in the instant project till December' 2020, a total of 72,917 persons were issued notices for 7662.4103 ha. of crop area damaged and a total of Rs. 4343.15 lakhs (Rs. 434.32 Millions), Rs. 4876.55 lakhs (Rs. 487.66 Millions) and Rs 7425.79 lakhs (Rs 742.58 Millions) were paid during foundation, erection and stringing respectively.

Similarly, a compensation amount of Rs. 5306.04 lakhs (Rs. 530.60 Millions), Rs.3338.37 lakhs (Rs. 333.84 Millions) and Rs. 35645.23 lakhs (Rs. 3564.52 Millions) were also paid against 7,83,772 nos. of Trees damaged during foundation, erection and stringing respectively. (Refer **Table-3**).

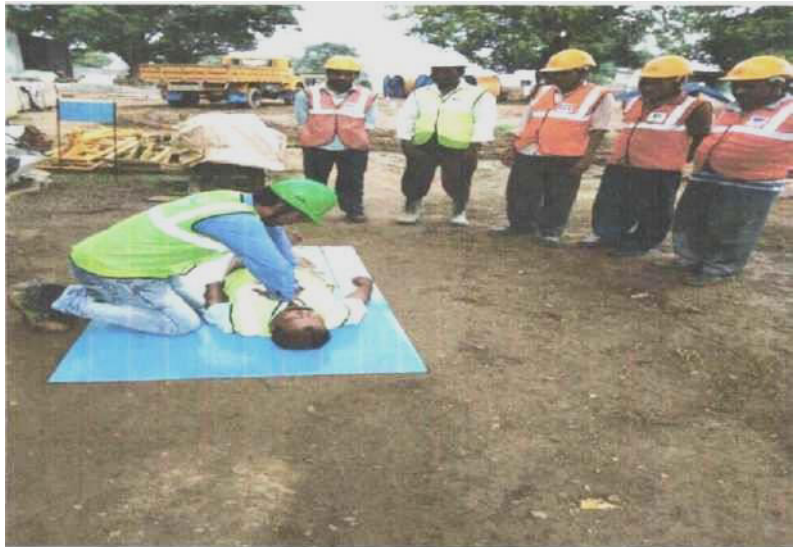
In compliance with the requirements of guidelines dated 15th October, 2015 issued by Ministry of power, Govt of India regarding land compensation, a total amount of Rs 19635.49 lakhs (Rs. 1963.55 Millions) has been paid till December' 20 (**Table-4**) in the States which have already adopted the said guidelines (**Annexure-4**).

In view of aforesaid, it may be noted that all possible measures have already been taken not only towards mitigation of adverse environmental impacts leftover after exhausting the options of avoidance and minimization but also to safeguard the interest of PAPs. Moreover, the state governments are also persuaded for enhancing the compensation as per MoP guidelines on RoW compensation. Besides, direct or indirect benefits of the subprojects like the employment opportunity, improved & uninterrupted power supply, improvement in infrastructure facilities, improved commercial activities will outweigh the negative impacts of the project.



Dr. S.S. Singh
Chief General Manager, ESMD

Plate 1: Safety Awareness & Training



Use of PPEs & Safe Working Practices



Plate - 2 : E & S Training Programme

Training Program on “Managing Right of Way (ROW) and Obtaining Statutory Clearances for Projects”				
Date	10.00-10.15	10.15-11.30	11.30-11.40	11.40-13.00
06.08.20	Inauguration	Environmental laws of India viz-a-viz Forest & Wildlife Clearance <i>(Dr. S.S. Singh, CGM (ESMD), CC)</i>	Break	Forest/ Wildlife Clearance <i>(Dr. S.S. Singh, CGM (ESMD), CC)</i>
Date	10.00-11.15	11.15 - 11.30	11.30 -12.45	12.45-13.00
07.08.20	RoW Compensation Vis-à-vis new development in the ambit of existing laws and RoW (Process & Compensation) Guidelines <i>(Dr. R.K. Srivastava, Ex. CGM (I/c) ESMD & Consultant)</i>	Break	The Right to Fair compensation and Transparency in Land Acquisition, Rehabilitation and Resettlement Act 2013 & Direct Purchase <i>(Dr. R.K. Srivastava, Ex. CGM (I/c) ESMD & Consultant)</i>	Feedback

Training Program on Overview of Forest (Conservation) Act, 1980 with recent developments & insight of forest proposal”				
Date	10:00-10:10	10:10 – 11:10	11:10-12:25	12:25-01:00
16.10.20	Inauguration	RoW Compensation Vis-à-vis new development in the ambit of existing laws and RoW (Process & Compensation) Guidelines <i>(Dr. R.K. Srivastava, Ex. CGM (I/c) ESMD & Consultant)</i>	Approval under Forest (Conservation) Act 1980 & Wildlife Clearance under Wild Life (Protection) Act, 1972 <i>(Dr. S.S. Singh, CGM (ESMD), CC)</i>	Submission of proposal under Forest (Conservation) Act 1980 <i>(Suvendu Kumar Kar, Chief Mgr. (ESMD))</i>

Sample Compensation Case

POWER GRID CORPORATION OF INDIA LIMITED
 (A Government of India Enterprise)
 SOUTHERN REGION-II
 Dharmapuri Main Road, Tirupattur-635601.

NOTICE UNDER THE ELECTRICITY ACT/2003 READ WITH THE INDIAN TELEGRAPH ACT, 1885

Notice No.: **6388**
 Date: **14/12/2018**

The Line/Section: **800KV HVDC RAIGARH-PUGALUR TRANSMISSION LINE (PKG-09)**
 Approval Ref: **52/11(PGCIL)/2015-PSPA/11/134 dt. 18-02-2016**

Father/Husbands Name: **Kandam**
 Block/Tehsil: **Krishnagiri**
 Pin: **635102**

Name of the Village/Manda/Tehsil/Circle: **Krishnagiri**
 Name of the District: **Krishnagiri**
 Aadhaar No. of Beneficiary: **4111**

Location / Section	Name of the Crop	Affected Crop Area (sq.m)	Activity Fdn/Exec/Surg/Other	Remarks
VH1	Coconut	30.3 x 2 = 60.6	Exec	

Location / Section	Name of the Tree Species	Approx. Age(Yr)	Girth (1 m. above ground level)	Height (in meter)	Nos.	Activity Fdn/Exec/Surg/Other	Remarks

For Power Grid Corporation of India Ltd.
 Signature of Issuing Official: **[Signature]**
 Signature of Beneficiary/Representative: **[Signature]**

NOTICE TO LAND OWNER

POWER GRID CORPORATION OF INDIA LIMITED
 (A Government of India Enterprise)
 Southern Region Transmission System-II
 No. 185, Tamilnadu Housing Board Phase-II, Dharmapuri Main Road, Tirupattur-635 601.

CERTIFICATE OF COMPENSATION FOR TREE CLEARANCE ISSUED UNDER INDIAN TELEGRAPH ACT 1885

CCTC No. **12666** Date: **16/11/2020**

This is to certify that as per the orders of the Engineer, crop / trees mentioned below were damaged / felled between location No. **Cr. 12/11 - 12/16** and for construction of Power Grid "+800KV HVDC Raigagh - Pugalur Transmission Line Pard -IX" and handed over to the land owners.

Particulars of Trees - felled / Crops - damaged: **Stringing**

Coconut 15 Nos. 28 years

The above mentioned Tree / Crops were in survey No. **80/48/1/69** Patta No. **418** Village **Therangunia** Taluk **Matkonnampalli** Dist **Vellore** and belongs to Sri / Smt. **Ashakan** S/O/Wo. **Medi**

(Address.....)

The Compensation for the trees cut / crops damaged as mentioned above will be paid by **POWERGRID, Tirupattur TLC** as assessed by the Revenue / Forest / Horticulture / Agriculture Departments, Government of Tamil Nadu.

Conditions accepted, **For POWERGRID**
 Signature of the Landowner: **[Signature]**
 Signature: **[Signature]**

DEPARTMENT OF HORTICULTURE

From: **Thiru.P.Annamalai, B.Sc., (Hortl), Deputy Director of Horticulture, Dharmapuri-5.**

To: **Assistant General Manager, 185, TNHB Phase-II, Tirupattur- 635 601**

Tr.No.A3/2758/2018 Date: **13.02.2018**

Sir,

Sub: **Horticulture Crops - Rate of Payment of Compensation for Horticulture Crops / Tree Crops value furnished - Regarding.**

Ref: **Lr.No. SRTS-II/HVDC/TPR / TLC / F-103/2018 Dated. 12.02.2018.**

With reference to the letter cited above the compensation value for Horticulture Crops are furnished below.

S.No	Name of Crops	Area / No	Rate in Rs.
1.	Mango pre bearing tree	per No	1750
2.	Mango 15 years	Per No	12500
3.	Mango 15-25 years	Per No	17500
4.	Mango > 25 years	Per No	18500
5.	Mango < 15 years	Per No	8000
6.	Sapota	Per No	8000
7.	Guava	Per No	2750
8.	Pomegranate	Per No	3500
9.	Lemon	Per No	4000
10.	Orange	Per No	4800
11.	Amala	Per No	3500
12.	Drumstick	Per No	1875
13.	Papaya	Per No	600
14.	Banana	Per No	360
15.	Onion - small	Per acre	60000
16.	Onion - Big	Per acre	65000
17.	Chillies	Per acre	70000
18.	Tomato - Variety	Per acre	50000
19.	Tomato - Hybrid	Per acre	65000
20.	Brinjal - Variety	Per acre	45000

RATE ASSESSMENT BY HURTICULTURE AUTHORITY

POWER GRID CORPORATION OF INDIA LIMITED
TIRUPATTUR TLC
800KV HVDC RAIGARH-PUGALUR TL PART-IX
List of Land owners for Agri Assessment - Vellore District

S. No.	Loc. No.	Notice	Name and Address of land owner	Patta / Survey No.	Type of work	Name of the Tree	No of tree to be removed	Age
6	CM 121/1-122/0	TPR 50 2500	Ashokan S/o. Vedi Thoppulagunda-Vil Natrampalli-Tik Vellore-Dist	80/4E,69 Patta 418	Stringing	Coconut	15	28yrs
7	CM 122B/0-123/0	TPR-50 2497	Neducheznian S/o. Samraju Natrampalli-Vil Natrampalli-Tik Vellore-Dist	38,39 Patta 82	Stringing	Coconut	6	26yrs

V. Vedyappan / V. Vedyappan
कनि आयेया / Junior Engineer
पावरीपड / POWERGRID
तिरुपति / Tirupattur

Asst. Director of Agriculture
Natrampalli, 27/6/19

ASSESSMENT BY REVENUE AUTHORITIES

State Bank of India
Kalappanahalli Palacode, Dharmapuri, 635205
Name: M. KANDASAMY P
Address: 118 KUSUMANGAL POST, KALAPPANAHALLI PALACODE
Date of Birth: 28/04/1955
Aadhaar: 227824138721
PAN: 30354130320
Joint Name: 1
Nomination Registration No. & Date: 11/01/2017, 52523155
Data of Pass Book: 13/01/2017

VERIFICATION OF ACCOUNT OF OWNER FOR ONLINE PAYMENT

கிராம நிர்வாக அலுவலர் சான்று

VAO CERTIFICATE

1027



Village Administrative Officer
21, Kalappanahalli-Village
Dharmapuri District

தலைவர் பெயர்: தாலுக்கா உதவி அலுவலர் சான்று
கிராமத்தின் பெயர்: கிராமத்தின் பெயர்
தபெ: 27/06/2019
9942742326

கொடுக்கப்படும் சான்று.
நபர் நபருக்கு: 11/1/19 புல எண்ணம்: 27/06/2019 விஸ்தீரணம்: 02/00
ம. படலா எண்: 50 - உள்எழு தற்சமயம்: கிராமத்தின் பெயர்

யுள்ளார்.
நூறிடத்தின் வழியாக தற்சமயம் பவர்கிட்ட நிறுவனத்தினரால் அமைக்கப்பட்டு வரும் உயர் மின் அழுத்த
மீ / மின் கம்பி அமைக்கும் பணி நடைபெற்று வருகிறது.

புலம் மேற்படி நபர் திரு: க. க. க. என்பவரின்
சுக்கு விபரம் Bank Details of the above mentioned person Sri / Smt.

ன் பெயர் / Name of Bank: சிஎன்ஆர் சேவா சங்கம்
ன் முகவரி / Address of Bank: கிராமத்தின் பெயர்
ணக்கு எண் / SB Account No.: 61742200176423
IFSC Code: CYNB0006174

யு/Encl
ணக்கு புத்தக முதல் பக்கம் நகல் / Bank Pass Book 1st Page Xerox

27/06/2019
நில உரிமையாளர் கையெழுப்பல்

OWNERSHIP VERIFICATION
CERTIFICATE BY REVENUE
AUTHORITY

ANNEXURE -2

**Photographs related Covid- 19 Specific Measures Implemented
at various Sites**



Thermal scanning at Gate before entering to work premises



Following social distancing by workers at site



Distribution of relief materials to workers during the pandemic



Sanitization of work place



APPENDIX-1



भारत सरकार
GOVERNMENT OF INDIA
पर्यावरण, वन एवं जलवायु परिवर्तन मंत्रालय
MINISTRY OF ENVIRONMENT, FORESTS
& CLIMATE CHANGE

Regional Office (WC/2)
Ground Floor, Last Wing
New Secretariat Building
Civil Lines, Nagpur - 440001
E-mail: apccfcentral-ngn-mcf@gov.in

F.No. FC-III/MH-30/2018-NGP/ 4198

Date: 5.09.2018

To,

The Secretary,
Revenue and Forest Department,
Hutatma Rajguru Chowk
Madam Cama Marg
Mantralaya, Mumbai - 400032.

Sub: Diversion of 432.6791 ha of Forest Land in favour of Powergrid, Bramhapuri for Construction of 800 KV D/C Raigarh - Pugalur Transmission Line passing through the Forest area in total 76 Villages of Four Forest Division in Chandrapur District in the State of Maharashtra - Regarding.

Sir,

I am directed to refer to State Government of Maharashtra letter no. FLD-2018/C.R.185/F-10 dated 07.06.2018 and APCCF & Nodal Officer (FCA), Maharashtra letter no. Desk-17/NC/ULD-428/18-19 dated 23.05.2018 on the above subject seeking prior approval of the Central Government under Section-2 of the Forest (Conservation) Act, 1980 and APCCF & Nodal Officer (FCA), Maharashtra letter no. Desk-17/NC/ULD-12610/1028/18-19 dated 13.08.2018 forwarding additional information as sought by this Office vide letter of even number dated 29.06.2018 and to say that the said proposal has been examined and recommended by the Regional Empowered Committee constituted under Section - 4 of the Forest (Conservation) Act, 1980.

After careful examination of the proposal of the State Government and on the basis of the approval of the proposal by the Regional Empowered Committee, the Central Government hereby accords 'in-principle' under Section - 2 of the Forest (Conservation) Act, 1980 for diversion of 432.6791 ha of Forest Land in favour of Powergrid, Bramhapuri for Construction of 800 KV D/C Raigarh - Pugalur Transmission Line passing through the Forest area in total 76 Villages of Four Forest Division in Chandrapur District in the State of Maharashtra subject to the fulfilment of the following conditions:

- (i) Legal status of the diverted forest land shall remain unchanged;
- (ii) Compensatory afforestation will be carried out in 866.00 ha double degraded forest land twice in extent to the forest land being diverted, shall be raised and maintained by the State Forest Department at the cost of the User Agency;
- (iii) As the proposed project comes under the corridor of Indravati- Tadoba Andhari Tiger Reserve and Chaprala Wildlife Sanctuary, the User Agency shall increase the height of towers in the forest area from 18.0 meters to 24.0 meters, in accordance with the recommendations made by the Wildlife Institute of India, Dehradun

(Signature)

- (iv) The User Agency shall transfer the cost of raising and maintaining the compensatory afforestation, at the current wage rate, to the State Forest Department. The scheme may include appropriate provision for anticipated cost increase for works scheduled for subsequent years;
- (v) The State Government shall charge the Net Present Value (NPV) of the forest land being diverted under this proposal from the User Agency as per the orders of the Hon'ble Supreme Court of India dated 28.03.2008, 24.04.2008 and 09.05.2008 in Writ Petition (Civil) No. 202/1995 and the guidelines issued by this Ministry vide its letter No. S-3/2007-FC dated 05.02.2009 in this regard;
- (vi) At the time of payment of the Net Present Value (NPV) at the then prevailing rate, the User Agency shall furnish an undertaking to pay the additional amount of NPV, if so determined, as per the final decision of the Hon'ble Supreme Court of India;
- (vii) All the funds received from the user agency under the project, except the funds realized for regeneration/ demarcation of safety zone, shall be transferred to Ad-hoc CAMPA, through e-challan, in the Saving Bank Account pertaining to the State concerned;
- (viii) The User Agency shall obtain the Environment Clearance as per the provisions of the Environmental (Protection) Act, 1986, if required;
- (ix) No labour camp shall be established on the forest land;
- (x) The User Agency shall provide firewood preferably alternate fuels to the labourers and the staff working at the site so as to avoid any damage and pressure on the nearby forest areas;
- (xi) The boundary of the diverted forest land shall be demarcated on ground at the project cost, by erecting four feet high reinforced cement concrete pillars, each inscribed with its serial number, forward and back bearing and distance from pillar to pillar;
- (xii) No approach road shall be constructed in the forest area for transportation of steel and other material required for the transmission line. As far as possible the User Agency shall use the existing road and the proposed RoW for the transportation of the material and in the event of non-availability of such facilities, the User Agency shall transport material manually without construction of any path.
- (xiii) The forest land shall not be used for any purpose other than that specified in the proposal;
- (xiv) The User Agency shall ensure that because of this project, no damage is caused to the wildlife available in the area;
- (xv) Comments of the PCCF (Wildlife) on special protection measures, if any required to be taken for the conservation and protection of the Wildlife specially Schedule-I species should be obtained and suggestions/recommendations made by the PCCF (Wildlife) should be implemented by the User Agency during the construction of the transmission line. A report on such measures should be submitted to the Regional Office along with the compliance report of Stage-I approval.
- (xvi) Width of right of way for the transmission line shall be limited to 69 meters;
- (xvii) The layout plan of the proposal shall not be changed without the prior approval of the Central Government;

esb

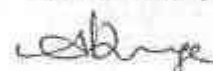
- (xviii) The forest land proposed to be diverted shall under no circumstances be transferred to any other agency, department or person without prior approval of the Central Government;
- (xix) The user agency shall install circuit breakers at suitable places besides maintain necessary ground clearance to prevent electrocution of wild animals;
- (xx) The user agency shall install 'bird reflectors' at appropriate places, in consultation with the PCCF (Wildlife), Maharashtra and detail of the same shall be submitted to the Regional Office, along with the Stage- I compliance report;
- (xxi) The recommendations to be made by the NTCA, New Delhi, shall be a binding on the User Agency. The User Agency shall ensure compliance of additional conditions, if any recommended by the NTCA, New Delhi and a report on the same shall be submitted along with the compliance of Stage- I approval;
- (xxii) Felling of trees shall be restricted to 47061 trees. Any tree felling shall be done only when it is unavoidable and that too under strict supervision of the State Forest Department;
- (xxiii) To minimize the felling for construction of transmission line, user agency shall comply with the following guidelines:
- (a) Below each conductor, width clearance of 10 mts. would be permitted for carrying the tension stringing equipment. The trees on such strips may be felled but after stringing work is completed, the natural regeneration will be allowed to come up.
 - (b) One outer strip may be left clear to permit maintenance of the transmission line;
 - (c) In the remaining width the right of way felling/pollarding/pruning of trees will be done with the permission of the local forest officer whenever necessary to maintain the electrical clearance, trees shall be allowed to be felled or lopped to the extent required, for preventing electrical hazards by maintaining the minimum 9.0 meter clearance between conductors and trees. The sag and swing of the conductors are to be kept in view while working out the minimum clearance mentioned as above;
 - (d) User agency in consultation with the State Forest Department prepare a detailed scheme for creation and maintenance of plantation of dwarf species (preferably medicinal plants) in right of way under the transmission line, and provide funds for execution of the said scheme to the State Forest Department and a scheme to this effect will be submitted along with Stage- I compliance.
 - (e) In case a portion of the transmission lines to be constructed is located in hilly areas, where adequate clearance is already available, trees shall not be cut;
- (xxiv) The user agency in consultation with the State Government shall create and maintain alternate habitat/home for the avifauna, whose nesting trees are to be cleared in this project. Bird's nests artificially made out of eco-friendly material shall be used in the area, including forest area and human settlements, adjoining the forest area being diverted for the project and a scheme to this effect will be submitted along with Stage- I compliance.
- (xxv) The State Government shall ensure that settlement of rights, in terms of the Scheduled Tribes and Other Traditional Forest Dwellers (Recognition of Forest Rights) Act, 2006, if any, has been completed in accordance with the Guidelines issued by the MoEF&CC in this regard;



- (xxvi) Provision of chain link fencing to protect the CA Land from being encroached has to be incorporated in CA scheme at all the Divisions and the revised CA scheme may be submitted along with the compliance report.
- (xxvii) The User Agency shall submit six monthly self-compliance reports as on 1st January and 1st July of every year to this office as well as to the Nodal Officer of the State.
- (xxviii) The State Government shall monitor compliance of conditions of Forest Clearance and shall submit in this regard yearly report as on 31st December of every year;
- (xxix) Any other condition that the concerned Regional Office of this Ministry may stipulate, from time to time, in the interest of conservation, protection and development of forests & wildlife;
- (xxx) The User Agency and the State Government shall ensure compliance to provisions of the all Acts, Rules, Regulations and Guidelines, for the time being in force, as applicable to the project; and
- (xxxi) Grant of working permission to the extant proposal may be considered by the State Government in accordance with the provisions as contained in the MoEF&CC's Guidelines dated 28.08.2015.

After receipt of a report on the compliance of conditions no (iv), (v), (vii), (xv), (xx), (xxi), (xxiii)(d), (xxiv), (xxvi) and undertakings, duly authenticated by the competent authority in the State Government, in respect of all other conditions, from the State Government, formal approval will be considered in this regard under Section-2 of the Forest (Conservation) Act, 1980.

Yours faithfully,



(Dr. E Arockia Lenin)
Scientist 'C'

Copy to:

- i. The PCCF, Government of Maharashtra, Nagpur.
- ii. The Addl. PCCF & Nodal Officer (FCA), Government of Maharashtra, Nagpur.
- iii. Director (RoHQ), Ministry of Environment, Forest and Climate Change, Indira Paryavaran Bhawan, Jorbagh Road, Aliganj, New Delhi.
- iv. User agency.
- v. Guard file.



(Dr. E Arockia Lenin)
Scientist 'C'



Government of India
Ministry of Environment, Forest and Climate Change
(Wildlife Division)

6th Floor, Vayu Wing
Indira Paryavaran Bhawan
Jor Bagh Road, Aliganj
New Delhi 110 003

Date: 29.08.2019

F.No.6-104/2019 WL

To

All Members
Standing Committee of NBWL

Sub: Minutes of 54th Meeting of the Standing Committee of National Board for Wild Life- reg.

Sir / Madam,

Kindly find enclosed copy of the Minutes of 54th Meeting of the Standing Committee of National Board for Wild Life held on 18th July 2019 through Video Conference under the chairmanship of Hon'ble Union Minister of Environment, Forest and Climate Change.

Yours faithfully,

(Dr Pasupala Ravi)
Scientist C

Encl: As above

Distribution

- (1) Secretary, MoEF&CC
- (2) DGF&SS, MoEF&CC
- (3) Member Secretary, NTCA
- (4) ADGF(FC), MoEF&CC
- (5) ADGF(WL), MoEF&CC
- (6) Director, WII, Dehradun
- (7) Director, GEER Foundation, Gandhinagar, Gujarat
- (8) Prof. R. Sukumar, Member, NBWL
- (9) Dr. H.S. Singh, Member, NBWL
- (10) Pr. Secretary (Dept. of Envi., Forest, Science & Tech.), Govt. of Andhra Pradesh
- (11) Shri Noyal Thomas, IGF & Director (PE)

Copy to

- (1) PS to Hon'ble MoEF&CC
- (2) PPS to DGF&SS, MoEF&CC
- (3) PPS to Addl.DGF(WL), PPS to IGF(WL)
- (4) CWLW, Bihar / CWLW, Gujarat / CWLW, Jammu & Kashmir / CWLW, Jharkhand / CWLW, Odisha / CWLW, Rajasthan / CWLW, Madhya Pradesh / CWLW, Maharashtra CWLW, Uttarakhand / CWLW, Tamil Nadu

The State Board for Wildlife in its meeting dated 04/07/2014 and the state government has clarified that no Great Indian Bustard is visible in this sanctuary. Wildlife institute of India in its survey report of 2011 did not record the presence of the bird in the sanctuary but it recommended for habitat restoration in open and less disturb areas having potential for Great Indian Bustard. The state board has recommended the proposal for de-notification in its above mentioned meeting.

After discussions, the Standing Committee agreed in principle to the State Government's proposal for rationalization of the boundary of the Son Chiriaya Sanctuary subject to the condition that the State Government will prepare and implement a GIB conservation Management and Habitat Restoration Plan in the less disturbed area of the sanctuary. The State Government shall submit the draft notification for rationalization of the boundary of the Son Chiriaya Hokan Bird (Great Indian Bustard) Sanctuary to the Ministry of Environment Forest and Climate Change along with the proposal for re-notification of ESZ.

54.4.10 Proposal for use of 25.149 ha of forestland in corridor of Tadoba - Andheri Tiger Reserve for construction of 800 kV, D/C Raigarh – Pugalur Transmission line by Power Grid Corporation of India Limited in Chandrapur District, Maharashtra State

The IGF(WL) briefed the Standing Committee and stated that use of 432.679 ha of forest land is required for construction of 800 kV, D/C Raigarh – Pugalur Transmission line by Power Grid Corporation of India Limited in Chandrapur District, Maharashtra out of which 25.149 ha of forestland is required in the corridor of Tadoba – Andhari Tiger Reserve for which proposal has been submitted by the user agency. He stated that the State Chief Wildlife Warden has recommended the proposal with the following conditions:

- (1) Increase the height of the lowest conductor from 18 m to 24 m.
- (2) Install Bird reflectors at appropriate places.
- (3) As decided in the 8th meeting of State Board for Wildlife held on 20th February 2014, that the project proponent shall deposit 2% cost of the proposed project which passes through the deemed ESZ should be deposited with the CCF & FD, Tadoba – Andhari TR Chandrapur for the habitat improvement of Tadoba – Andhari Tiger Reserve and adjoining forests.

Further the IGF(WL) stated that the NTCA has also recommended the project subject to the strict adherence to the following mitigation measures:

- (i) **Insulated cables / underground cables** should be used in the stretch of proposed transmission line passing through the forest and important wildlife area across its entire length.
- (ii) All power lines within 2 km of forest land scrub patches and important wildlife areas across its entire length will be marked with bird diverters as shown in Annexure-I (with solar powered right flashers) spaced at 10 m intervals. In areas without insulated cable, Power Grid shall maintain > 1.5m spacing (larger than the wrist-to-

wrist or head-to-foot distance of a bird) between energize components and grounded hardware.

- (iii) In compliance with MoEFCC's guidelines, no clearance of vegetation shall be allowed for open areas with sparse vegetation (such as scrublands, grasslands, wetlands etc.) A 5.8 m vertical clearance from the vegetation and 1.2 m horizontal clearance from the vegetation could be permitted in other areas of the transmission line. These dimensions are based on clearance requirements for power lines under Rules 77, 79, and 80 read with Rule 82, 93) in the India electricity Rules 1956 (as amended up to 20 November 2000) and local forest officials should monitor strict implementation of this on ground.
- (iv) The alignment of the Power line should be made such that minimum numbers of trees are felled. Any felling/pollarding / pruning to trees for allowing electrical clearance / maintenance will be done with the permission of the local DFO. Only those trees that are of sufficient height to compromise the requirements of minimal vertical and horizontal clearance from the conductor wires at maximum sag point should be lopped.
- (v) As far as possible vegetation clearing along the stretches of transmission corridor passing through forested areas may be minimized or avoided by increasing the right of tower structures to maintain safe vertical clearance over natural vegetation to prevent disruption of vegetation or forest continuity.
- (vi) The user agency should adhere to the guidelines issued by Hon'ble National Green tribunal in its judgment in Janajagarithi Samiti versus Union of India and Others (Appeal No.10 of 2012) related to transmission line passing through the forest in Western Ghats.
- (vii) Forest Clearance Division, MoEF&CC in consultation with Central Electricity Authority had also issued guidelines pertaining to transmission lines passing through the forests. The user agency should follow these guidelines while constructing the Power line.
- (viii) Periodic clearing of vegetation along the power line may bring up invasive species. The plantation shall be carried out with the Forest Department below the power line.

Mandatory safeguards during construction phase

- (a) No construction / maintenance work shall be permitted between 6.0 PM to 7.0 AM. Labour camps should be at least 1 km away from the boundaries of the forestland along the entire length of the proposed transmission line.
- (b) In compliance with MoEFCC's guidelines, construction of new approach / across route will require prior approval under the Forest (Conservation) Act, 1980.

Post-construction mandatory safe guards

- (i) The user agency shall deposit 5% of the total cost to the Tadoba - Andhari and Indravati Tiger Reserve Management (2.5% each) which should utilize this money for eco-restoration, prey augmentation, reducing public dependence on forests and promoting local livelihoods in the landscape.
- (ii) The Chief Wildlife Warden, Maharashtra should constitute a monitoring committee comprising of members from the local forest officials, MoEF&CC and NTCA Regional

Office and user agency to oversee the implementation of the project in adherence to the mitigation measures suggested herein and / or by the State Forest Department.

Further the IGF(WL) stated that the State Board for Wild Life has also recommended the proposal in its meeting held on 05.12.2018.

After discussions, the Standing Committee decided to recommend the proposal subject to the conditions that

- (a) The user agency shall deposit 4% of the total cost to the Tadoba - Andhari and Indravati Tiger Reserve Management (2 % each) which should utilize this money for eco-restoration, prey augmentation, reducing public dependence on forests and promoting local livelihoods in the landscape.
- (b) The project proponent will comply with all the conditions imposed by the State Chief Wildlife Warden and the NTCA except the condition No.(3) of the State CWLW and NTCA's condition No.(i) under post construction mandatory safe guards related to deposit of the certain percentage of project cost for habitat improvement which shall be read as condition (a) above. **The use of insulated transmission line cables over the ground / or underground transmission line cables passing through the protected areas should be the first priority of the user agencies.**
- (c) The annual compliance certificate on the stipulated conditions should be submitted by the project proponent to the State Chief Wildlife Warden and an annual compliance certificate shall be submitted by the State Chief Wildlife Warden to Govt. of India.

54.4.11 Proposal for renovation of Chaurakund – Khopan – Kholmar road passing through Melghat Tiger Reserve, Maharashtra State

The IGF(WL) briefed the Standing Committee and stated that the proposal is for up-gradation of existing road of 17.5 km (14.0 km metal road and 3.5 km murum road) into cement road in the existing width of 6.0 m passing through the core (10.0 km) and buffer area (7.5 km) of Melghat Tiger Reserve. He stated that the State Chief Wildlife Warden has recommended the proposal with the following conditions:

- (1) Speed breakers at certain intervals should be created where there is more movement of wild animals to and fro. Also speed of vehicles should be kept as low as possible and sounding of horns are not allowed in the portion and signages at proper places should be fixed.
- (2) The project proponent to ensure the movement of wild animals and proper drainages and free flow of all natural streams, rivulets, etc, crossing the road.
- (3) As decided in the 8th meeting of State board for Wildlife held on 20th February 2014 the project proponent shall deposit 2% of the cost of the proposed project (12.71 crore) which passes through Melghat Tiger Reserve and it notified ESZ should be deposited with the foundation of Melghat Tiger Reserve for habitat development, protection and conservation of Melghat Tiger reserve and adjoining forests. Sanctuary and adjoining forests.



सत्यमेव जयते

भारत सरकार

GOVERNMENT OF INDIA

पर्यावरण, वन एवं जलवायु परिवर्तन मंत्रालय

MINISTRY OF ENVIRONMENT, FORESTS & CLIMATE CHANGE

Regional Office (South Eastern Zone),

1st & 2nd floor, IIEPC Building, No.34, Cathedral Garden Road,

Nungambakkam, Chennai - 600034, Tel. 044-28222047,

e-mail: ro.moefccc@gov.in / roefccc@gmail.com



F.No.4-APB/65/2018-CHN/14/48

Date 10 September, 2018

To,

The Principal Secretary to the Government of Andhra Pradesh,
Environment, Forests, Science & Technology Department,
Government of Andhra Pradesh, Room No.268, 1st Floor, 4th Block,
Andhra Pradesh Secretariat, Velagapudi, Amaravati Guntur District-522503

Subject: Diversion of 64.23 ha of forest land for construction of 800 KV HVDC Raigarh-Puglur Transmission Line in Kurnool, Proddatur, Kadapa and Chittoor (West) Forest Divisions in favour of the Additional General Manager, Power Grid Corporation of India Limited, Secunderabad -reg.

Sir,

Please refer to the State Government's letter No. EFS01-12021/78/Section-II/2018 dated 25.07.2018 and online proposal No. FP/AP/TRANS/31686/2018 seeking prior approval of the Central Government for diversion of forest land in accordance with Section '2' of Forest (Conservation) Act, 1980 for the above mentioned project.

After careful consideration of the proposal of the State Government and as recommended by the Regional Empowered Committee (REC), I am directed to convey the Central Government's in principle approval (Stage-I) under Section '2' of Forest (Conservation) Act, 1980 for diversion of 64.23 ha of forest land for construction of 800 KV HVDC Raigarh-Puglur Transmission Line in Kurnool, Proddatur, Kadapa and Chittoor (West) Forest Divisions in favour of the Additional General Manager, Power Grid Corporation of India Limited, Secunderabad, subject to the following conditions:-

1. The legal status of forest land shall remain unchanged;
2. Demarcation of the proposed forest area shall be carried out by erecting 4 feet high cement concrete pillars duly numbered, at an interval of 20 meters, by the user agency in consultation with the DFO concerned, at the project cost before the Stage II approval;
3. The State Forest Department shall carry out Compensatory Afforestation (CA) and its maintenance over 128.50 ha out of 140 ha of degraded forest land identified in Compt No 1, Dobbudupalli RF, Dhodium Beat, Muddanur Range in Proddatur Forest Division at the cost of the user agency. A minimum of 1000 plants / ha of diverted area shall be planted in the identified CA land. In case,

o/c

At

1

DESPATCHED (BY SP)

Date: 10/09/18 R.S.L.

the required numbers could not be planted therein, the balance shall be planted in the nearby RF/PF by the State Forest Department at the cost of the user agency and a map along with DGPS co-ordinates of such forest area shall be furnished along with the compliance report;

4. The degraded forest land identified for CA and the approved CA scheme shall not be changed without the prior approval of the Central Government and the State Forest Department shall ensure that the amount realized from the user agency towards CA should not be left unspent as recommended by the REC;
5. The State Government shall charge the Net Present Value of the diverted forest land measuring 64.23 ha from the user agency as per the orders of the Hon'ble Supreme Court dated 28.03.2008 and 09.05.2008 in IA Nos. 826 in 566 with related IA's in Writ Petition (Civil) No.202/1995;
6. Additional amount of Net Present Value (NPV) of the diverted forest land if any, becoming due after revision of the same by the Hon'ble Supreme Court of India in future, shall be charged by the State Government from the user agency. The user agency shall furnish an undertaking to this effect;
7. The funds received from the user agency towards Compensatory Afforestation and Net Present Value, etc under this project shall be deposited in the Corporation bank account of the Andhra Pradesh State CAMPA. The user agency shall compulsorily deposit the CA and other levies only by generating challan through the Ministry's website;
8. The user agency in consultation with the State Forest Department shall prepare a detailed scheme for creation and maintenance of plantation of dwarf species (*preferably medicinal plants*) under the transmission line, and provide funds for execution of the said scheme to the State Forest Department;
9. The maximum width of right of way for the proposed transmission line on the forest land shall not be more than 69 mtrs;
10. The forest land proposed for diversion shall under no circumstances be transferred / sublet to any other agency, department or person without prior approval of the Central Government;
11. The layout plan of the proposal shall not be changed without the prior approval of the Central Government. The user agency shall furnish an undertaking to this effect;
12. The user agency shall provide fire wood, preferably alternate fuel to labourers working at the site to avoid damage/tree felling;

Dh o/c

13. Disturbance shall be kept minimal by creating labour camps outside the forest area as far as possible and it will be the responsibility of the user agency to ensure that the labourers & staff engaged in execution of work do not destruct nearby forest flora & fauna;
14. The enumerated trees on the 69 meter width strip (right of way) would have to be felled but after stringing work is completed, natural regeneration shall be allowed to come up. Felling / pollarding / pruning of trees shall be done with the permission of the local forest officer wherever necessary for the maintenance of transmission lines;
15. In case the portion of transmission line to be constructed is located in hilly areas, where adequate clearance is already available, trees shall not be cut;
16. The State Forest Department shall ensure to plant adequate number of red sanders trees at the project cost to compensate for the felling of the species involved in this project;
17. During construction of transmission line, pollarding / pruning of trees located outside the above width of the strip, whose branches / parts infringe with conductor stringing, shall be carried out to the extent necessary, as may be decided by the local forest officer;
18. The user agency at the project cost shall provide bird deflectors, which are to be fixed on the upper conductor of the transmission line at suitable intervals to avoid bird hits;
19. All efforts shall be taken to minimize felling of trees and the State Forest Department shall carry out translocation of trees wherever feasible instead of resorting to felling, at the cost of the user agency;
20. The user agency and the State Government shall ensure compliance to Ministry's guidelines F.No 7-25/2012-FC dated 5th May, 2014 and 19.11.2014 and provisions of all Acts, Rules, Regulation and Guidelines of the Ministry, for the time being in force, as applicable to the transmission line projects;
21. The total forest area utilized for the project shall not exceed 64.23 ha and the forest area diverted shall not be used for any purpose other than those shown in the diversion proposal. The user agency shall furnish an undertaking to this effect;
22. The progress of the Compensatory Afforestation under the jurisdiction of Chittoor (West), Kadapa, Kurnool and Proddatur (WL) Divisions shall be

Amurde

monitored by the respective Circle Head and a copy of such monitoring report shall be forwarded to the Regional Office;

23. Any other conditions that the Central Government or Addl. PCCF(Central) of the Regional Office, Chennai may impose from time to time in the interest of afforestation, conservation and management of flora and fauna in the area, shall be complied by the user agency;

24. In the event of failure to comply with any of the above conditions the user agency is liable for penal action as decided by the Additional PCCF (Central), Regional Office, Chennai.

After receipt of the compliance report on above mentioned conditions, the proposal will be considered for final approval. This in-principle approval shall be valid for a period of 5 years from the date of issue of this letter. In the event of non-compliance of the above conditions, this in-principle approval shall automatically stand revoked after 5 years.

Yours faithfully,


(D.Sathiyam)

Conservator of Forests (Central)

Copy to:-

1. The Director General of Forests & Special Secretary to Govt. of India, Ministry of Environment, Forests & Climate Change, Indira Paryavaran Bhavan, Jor Bagh Road, Aliganj, New Delhi - 110 003.
2. The Principal Chief Conservator of Forests, Forests Department, Govt. of Andhra Pradesh, Aranya Bhavan, K.M. Munshi Road, Nagarampalem Guntur-522004.
3. The Additional Principal Chief Conservator of Forests/Nodal Officer (FCA), Office of the Principal Chief Conservator of Forests, Forests Department, Govt. of Andhra Pradesh, Aranya Bhavan, K.M. Munshi Road, Nagarampalem, Guntur-522004.
4. The Director, RO(HQ) Division, Ministry of Environment, Forests & Climate Change, Indira Paryavaran Bhavan, Jor Bagh Road, Aliganj, New Delhi - 110 003.
5. The Additional General Manager, Power Grid Corporation of India Limited, 765 KV Substation, Orvakal Mandal, Kurnool District, Andhra Pradesh-518010.
6. Guard file.


(D.Sathiyam)

Conservator of Forests (Central)

o/c.



भारत सरकार

GOVERNMENT OF INDIA

पर्यावरण, वन एवं जलवायु परिवर्तन मंत्रालय

MINISTRY OF ENVIRONMENT, FORESTS & CLIMATE CHANGE

Regional Office (South Eastern Zone),

1st & 2nd floor, HEPC Building, No.34, Cathedral Garden Road,

Nungambakkam, Chennai - 600034, Tel. 044-28222041,

e-mail: ro.moefccc@gov.in / roefccc@gmail.com



F.No. 4-TSC117/2018-CHN / 0504
Date 05th April, 2018

To

The Principal Secretary to the Government,
Environment, Forests, Science & Technology Department,
Telangana State Secretariat, Hyderabad

Subject: Diversion of 20,5282 ha of forest land in Bellampally and Karimnagar East (Presently Peddampally) Divisions for construction of 800 KV HVDC Raigarh-Pugular Transmission line in Adilabad and Karimnagar District in favour of Power Grid Corporation of India Limited-reg

Sir,

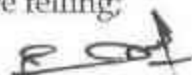
Please refer to the State Government's letter No.813/For.I(1)/2018 dated 23.03.2018 and online application No. FP/TG/TRANS/20850/2016 seeking prior approval of the Central Government for diversion of forest land in accordance with Section '2' of Forest (Conservation) Act, 1980 for the above mentioned project.

As recommended by the Regional Empowered Committee (REC), I am directed to convey the Central Government's in-principle approval (*Stage-I*) under Section '2' of Forest (Conservation) Act, 1980 for diversion of 20,5282 ha of forest land in Bellampally and Karimnagar East (Presently Peddampally) Divisions for construction of 800 KV HVDC Raigarh-Pugular Transmission line in Adilabad and Karimnagar District in favour of Power Grid Corporation of India Limited, subject to the following conditions:-

1. The legal status of forest land shall remain unchanged;
2. The demarcation of the proposed forest area shall be carried out by erecting 4 feet high cement concrete pillars duly numbered at an interval of 20 meters by the User Agency in consultation with the DFO concerned at the project cost before the Stage II approval;
3. The State Forest Department shall carryout the Compensatory Afforestation (CA) over 42,1288 ha. of degraded forest land identified in Compt No 15 & 16 of Rayadandi RF, Peddapet Beat, Ramagundem Section, Peddapalli Range at the cost of user agency. Minimum of 1000/ plants / ha of diverted area (minimum 21420 plants in total) shall be planted in the identified CA land. In case the required numbers could not be planted therein, the balance shall be planted in

the nearby RF/PF by the State Forest Department at the cost of the user agency and map along DGPS co-ordinates of such forest area shall be furnished along with the compliance report ;

4. The degraded forest land identified for CA and approved CA scheme shall not be changed without prior approval of the Central Government;
5. The State Government shall charge the Net Present Value of the diverted forest land measuring 20.5282 ha from User Agency as per the orders of the Hon'ble Supreme Court dated 28.03.2008 and 09.05.2008 in IA Nos. 826 in 566 with related IA's in Writ Petition (Civil) No.202/1995;
6. Additional amount of Net Present Value (NPV) of the diverted forest land if any, becoming due after revision of the same by the Hon'ble Supreme Court of India in future, shall be charged by the State Government from the User Agency. User Agency shall furnish an undertaking to this effect;
7. The funds received from the User Agency towards Compensatory Afforestation and Net Present Value under this project etc shall be deposited in the Corporation bank account of the Telangana State CAMPA. **The User Agency shall compulsorily deposit the CA and other levies only by generating challan through the Ministry's website;**
8. The User Agency in consultation with the State Forest Department shall prepare a detailed scheme for creation and maintenance of plantation of dwarf species (preferably medicinal plants) under the transmission line, and provide funds for execution of the said scheme to the State Forest Department;
9. The maximum width of right of way for the proposed transmission line on the forest land shall not be more than 69 mtrs;
10. The forest land proposed for diversion shall under no circumstances be transferred / sub let to any other agency, department or person without prior approval of the Central Government;
11. The layout plan of the proposal shall not be changed without the prior approval of the Central Government. User Agency shall furnish an undertaking to this effect;
12. The user agency shall provide fire wood preferably alternate fuel to labourers working at the site to avoid damage/tree felling;



13. Disturbance shall be kept minimal by creating labour camps outside the forest area as far as possible and it will be the responsibility of the user agency to ensure that the labourers & staff engaged in execution of work do not destruct nearby forest flora & fauna;
14. All efforts shall be taken to minimize the felling of trees from the proposed forest area and the State Forest Department shall carry out translocation of the trees wherever feasible at the cost of User Agency;
15. In case the portion of the transmission line to be constructed is located in hilly areas, where adequate clearance is already available, trees shall not be cut;
16. The User Agency and the State Government shall ensure compliance to Ministry's guidelines F.No 7-25/2012-FC dated 5th May, 2014 and provisions of the all Acts, Rules, Regulation and Guidelines of the Ministry, for the time being in force, as applicable to the transmission line projects;
17. The total forest area utilized for the project shall not exceed **20.5282 ha** and the forest area diverted shall not be used for any purpose other than those shown in the diversion proposal. User Agency shall furnish an undertaking to this effect;
18. The State Government shall comply with the instructions issued by the REC and conveyed vide this office letters dated 02.02.2018 & 09.03.2018 with regard to implementation of compensatory afforestation and uploading of proposal details including general approval in the Ministry's web portal;
19. The Progress of the Compensatory Afforestation as mentioned by the DFO, Bellampally Division in Sl No 12 (v) (a) & (b) of part II i.e 9.3 ha of forest land and 150.946 ha of non forest land and DFO, Peddamplaly Division in Sl No 12 (v) (a) of part II i.e 95.44 ha of forest land shall be monitored by the Circle Head and a copy of such monitoring report shall be forwarded to the Regional Office;
20. Any other conditions that the Central Government or Addl. PCCF(Central) of Regional Office, Chennai may impose from time to time in the interest of afforestation, conservation and management of flora and fauna in the area, shall be complied by the user agency;
21. The user agency shall submit the annual self compliance report in respect of the above conditions to the State Govt. and to the Regional Office, regularly;
22. In the event of failure to comply with any of the above conditions the user agency is liable for penal action as decided by the Additional PCCF (Central), Regional Office, Chennai.

After receipt of the compliance report on above mentioned conditions, the proposal will be considered for final approval. This in-principle approval shall be valid for a period of 5 years from the date of issue of this letter. In the event of non compliance of the above conditions, this in-principle approval shall automatically stand revoked after 5 years.

Yours faithfully,

(Dr. K. Ganesh Kumar)

Deputy Conservator of Forests (Central)

Copy to:-

1. The Director General of Forests & Special Secretary to Govt. of India, Ministry of Environment, Forests & Climate Change, Indira Paryavaran Bhavan, Jor Bagh Road, Aliganj, New Delhi - 110 003
2. The Principal Chief Conservator of Forests, Forests Department, Govt. of Telangana Aranya Bhavan, Saifabad, Hyderabad, PIN- 500 004.
3. The Additional Principal Chief Conservator of Forests/Nodal Officer (FCA), Office of the Principal Chief Conservator of Forests, Forests Department, Govt. of Telangana, Aranya Bhavan, Saifabad, Hyderabad, PIN- 500 004.
4. The Director, RO(HQ) Division, Ministry of Environment, Forests & Climate Change, Indira Paryavaran Bhavan, Jor Bagh Road, Aliganj, New Delhi - 110 003.
5. Power grid Corporation of India Ltd, 6-6-8/32/E, 4th Floor, Kavadiguda Main Road, Hyderabad, Telangana-500080.
6. Guard file.


(Dr.K.Ganesh Kumar)

Deputy Conservator of Forests (Central)



भारत सरकार

GOVERNMENT OF INDIA

पर्यावरण, वन एवं जलवायु परिवर्तन मंत्रालय

MINISTRY OF ENVIRONMENT, FORESTS & CLIMATE CHANGE

Regional Office (South Eastern Zone),

1st & 2nd floor, HEPC Building, No.34, Cathedral Garden Road,

Nungambakkam, Chennai - 600034, Tel. 044-28222041,

e-mail: ro.moefccc@gov.in / roefccc@gmail.com



F.No. 4-TNB022/2018-CHN / 0865
Date 07th June, 2018

To

The Principal Secretary to the Government of Tamil Nadu,
Environment & Forests Department,
Secretariat, Fort St. George, Chennai - 600 009.

Subject: Diversion of 9.12 ha of forest land in Dharmapuri (6.36 ha) and Vellore (2.76 ha) Forest Divisions for construction of 800 KV HVDC transmission line from Raigarh to Pugalur in favour of Power Grid Corporation of India Ltd, Bengaluru-reg

Sir,

Please refer to the State Government's letter No.9774/FR.10/2018-1 dated 21.05.2018 and online application No. FP/TN/TRANS/25759/2017 seeking prior approval of the Central Government for diversion of forest land in accordance with Section '2' of Forest (Conservation) Act, 1980 for the above mentioned project.

As recommended by the Regional Empowered Committee (REC), I am directed to convey the Central Government's in-principle approval (*Stage-I*) under Section '2' of Forest (Conservation) Act, 1980 for diversion of 9.12 ha of forest land in Dharmapuri (6.36 ha) and Vellore (2.76 ha) Forest Divisions for construction of 800 KV HVDC transmission line from Raigarh to Pugalur in favour of Power Grid Corporation of India Ltd, Bengaluru for a period of 35 years, subject to the following conditions:-

1. The legal status of forest land shall remain unchanged;
2. The demarcation of the proposed forest area shall be carried out by erecting 4 feet high cement concrete pillars duly numbered at an interval of 20 meters *by* the User Agency in consultation with the DFO concerned at the project cost before the Stage II approval;
3. The State Forest Department shall carryout Compensatory Afforestation (CA) over 18.24 ha of degraded forest area i.e. **12.75 ha** in Kalappambadi RF in Dharmapuri District and **5.52 ha** in Veerichettipalli Beat & RF in Gudiyathem Range of Vellore Forest Division at the cost of the User Agency. Minimum of 1000 plants / ha of diverted area shall be planted in the identified CA land. In case, the required numbers could not be planted therein, the balance shall be

o/c 1 *Am*

DESPATCHED (BY SP)
Date: 07/06/18 *Pst.*

planted in the nearby RF/PF by the State Forest Department at the cost of the user agency and map along with DGPS co-ordinates of such forest area shall be furnished along with the compliance report;

4. The degraded forest land identified for CA and the approved CA scheme shall not be changed without prior approval of the Central Government and the State Forest Department shall ensure that the amount realized from the user agency towards CA should not be left unspent as recommended by the REC;
5. The State Government shall charge the Net Present Value of the diverted forest land measuring 9.12 ha from User Agency as per the orders of the Hon'ble Supreme Court dated 28.03.2008 and 09.05.2008 in IA Nos. 826 in 566 with related IA's in Writ Petition (Civil) No.202/1995;
6. Additional amount of Net Present Value (NPV) of the diverted forest land if any, becoming due after revision of the same by the Hon'ble Supreme Court of India in future, shall be charged by the State Government from the User Agency. User Agency shall furnish an undertaking to this effect;
7. The funds received from the User Agency towards Compensatory Afforestation and Net Present Value under this project etc shall be deposited in the Corporation bank account of the Tamil Nadu State CAMPA. **The User Agency shall compulsorily deposit the CA and other levies only by generating challan through the Ministry's website;**
8. The User Agency in consultation with the State Forest Department shall prepare a detailed scheme for creation and maintenance of plantation of dwarf species (preferably medicinal plants) under the transmission line, and provide funds for execution of the said scheme to the State Forest Department;
9. The maximum width of right of way for the proposed transmission line on the forest land shall not be more than 69 mtrs;
10. The forest land proposed for diversion shall under no circumstances be transferred / sublet to any other agency, department or person without prior approval of the Central Government;
11. The layout plan of the proposal shall not be changed without the prior approval of the Central Government. User Agency shall furnish an undertaking to this effect;
12. The user agency shall provide fire wood preferably alternate fuel to labourers working at the site to avoid damage/tree felling;

13. Disturbance shall be kept minimal by creating labour camps outside the forest area as far as possible and it will be the responsibility of the user agency to ensure that the labourers & staff engaged in execution of work do not destruct nearby forest flora & fauna;
14. The State Government / User agency shall obtain necessary permission from the Hon'ble Supreme Court of India for felling of trees of spontaneous growth falling in both Dharmapuri and Vellore Divisions and submit the same for issuing of final approval;
15. The RoFR certificate for the area falling in Vellore Division (2.76 ha) in Paeradharami RF shall be obtained by the User Agency before final approval in consultation with District Authorities, if required;
16. The enumerated trees on the 69 meter width strip (right of way) would have to be felled but after stringing work is completed, natural regeneration shall be allowed to come up. Felling / pollarding / pruning of trees shall be done with the permission of the local forest officer wherever necessary for the maintenance of the transmission lines;
17. During construction of transmission line, pollarding / pruning of trees located outside the above width of the strip, whose branches / parts infringe with conductor stringing , shall be carried out to the extent necessary, as may be decided by the local forest officer;
18. All efforts shall be taken to minimize the felling of trees and the State Forest Department shall carry out translocation of the trees wherever feasible at the cost of User Agency;
19. The User Agency and the State Government shall ensure compliance to Ministry's guidelines F.No 7-25/2012-FC dated 5th May, 2014 and provisions of all Acts, Rules, Regulation and Guidelines of the Ministry, for the time being in force, as applicable to the transmission line projects;
20. The total forest area utilized for the project shall not exceed **9.12 ha** and the forest area diverted shall not be used for any purpose other than those shown in the diversion proposal. User Agency shall furnish an undertaking to this effect;
21. The Progress of the Compensatory Afforestation under the jurisdiction of Dharmapuri & Vellore Forest Divisions shall be monitored by the respective Circle Head and a copy of such monitoring report shall be forwarded to the Regional Office;

o/c³

Am

22. Any other conditions that the Central Government or Addl. PCCF(Central) of Regional Office, Chennai may impose from time to time in the interest of afforestation, conservation and management of flora and fauna in the area, shall be complied by the user agency;

23. In the event of failure to comply with any of the above conditions the user agency is liable for penal action as decided by the Additional PCCF (Central), Regional Office, Chennai.

After receipt of the compliance report on above mentioned conditions, the proposal will be considered for final approval. This in-principle approval shall be valid for a period of 5 years from the date of issue of this letter. In the event of non compliance of the above conditions, this in-principle approval shall automatically stand revoked after 5 years.

Yours faithfully,


(D.Sathiyam)

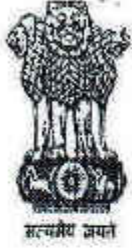
Conservator of Forests (Central)

Copy to:-

1. The Director General of Forests & Special Secretary to Govt. of India, Ministry of Environment, Forests & Climate Change, Indira Paryavaran Bhavan, Jor Bagh Road, Aliganj, New Delhi - 110 003.
2. The Principal Chief Conservator of Forests, Govt. of Tamil Nadu, Forest Department, No.1, Jeenis Road, Panagal Building, Saidapet, Chennai - 600 015.
3. The Additional Principal Chief Conservator of Forests/Nodal Officer (FCA), Office of the Principal Chief Conservator of Forests, Govt. of Tamil Nadu, Forest Department, No.1, Jeenis Road, Panagal Building, Saidapet, Chennai - 600 015
4. The Director, RO(HQ) Division, Ministry of Environment, Forests & Climate Change, Indira Paryavaran Bhavan, Jor Bagh Road, Aliganj, New Delhi - 110 003.
5. Power Grid Corporation of India Limited, SRTS-II, RHQ, Singanayakanahalli, Yelahanka, Bengaluru, Karnataka-560064.
6. Guard file.


(D.Sathiyam)

Conservator of Forests (Central)



Government of India
Ministry of Environment, Forest & Climate Change
North Eastern Regional Office
Law-U-Sib Lumbatngen
Near MTC Workshop, Shillong-793021
Tel(0364)-253-7609,7340/7395/7278.
Fax No(0364)2536041/2536983.
Email:- ro.nez.shil@gmail.com & moefro.shillong@gov.in

भारत सरकार
पर्यावरण, वन एवं जलवायु परिवर्तन मंत्रालय
पूर्वोत्तर क्षेत्रीय कार्यालय, शिलांग
लॉउ सीब लुम्बतंगेन
एम टी सी के पास, शिलांग - ७९३०२१
टेली(0364) 253-7609,7340/7395/7278
फैक्स (0364)-2536041/2536983
ईमेल: ro.nez.shil@gmail.com/moefro.shillong@gov.in

No. 3-AS C 023/2017-SHI 2660 - 61

16th October, 2018

सेवा में,

सचिव/Secretary,
पर्यावरण और वन विभाग/ Environment & Forest Department,
असम सरकार/ Government of Assam,
दिसपुर, गुवाहाटी-781006. / Dispur, Guwahati-781006.

Sub:- Proposal for diversion of 208.807 ha of forest land for construction of 400 KV D/C (Quad) from Jigmelling to Alipurduar Transmission Line by Power Grid Corporation of India Ltd.

Sir,

This has got reference to the State Govt Assam letter No. FRS.59/2017/187 dated 12.05.2017, No. FG.27/Nodal/Proposal/Power grid dated 06.10.2018 and Ministry of Environment, Forest & Climate Change (Wildlife Division), New Delhi letter No. F.No. 6-111/2018WL dated 27.09.2018 on the subject mentioned above, seeking prior approval of the Central Government in accordance with Section 2 of the FCA, 1980.

After careful consideration of the proposal of the State Government of Assam by the Regional Empowered Committee in its meeting held on 10.03.2018 and its recommendation and on the basis of the recommendation of the Standing Committee of National Board for Wildlife, I am directed to inform that the Central Government hereby conveys its "In Principle Approval" for diversion of 208.807 ha of forest land for construction of 400 KV D/C (Quad) from Jigmelling to Alipurduar Transmission Line by Power Grid Corporation of India Ltd. subject to the following conditions:

- (i) The User Agency shall transfer the cost of compensatory afforestation over double the degraded forest land of 419.5 ha in Kokrajhar district { i.e. 141 ha in Chirang RF, Haltugaon Division, 278.5 ha (i.e. 71ha in Phulkumari RF , 45 ha in Bhelakura RF , 154 ha in Mahamaya RF and 8.5ha in Guma RF) in Parbatjhor Division} to the Adhoc CAMPA through e-payment and inform this office through the State Forest Department.
- (ii) The State Govt shall charge the Net Present Value of the forest land diverted under this proposal from the User Agency as per the Judgment of the Hon'ble

Supreme Court of India dated 28.03.2008 & 09.05.2008 in LA No.566 in WP (C) No.202/1995 and as per the guideline issued by this Ministry vide letter No. 5-3/2001-FC dated 05.02.2009 in this regard.

- (iii) All the above funds received from the User Agency under the project shall be transferred to the Ad-hoc CAMPA Fund in New SB account No. 520101263743434 of Corporation Bank, CGO Complex, Phase-I, Lodhi Road, new Delhi-110003.
- (iv) The User Agency shall bear and deposit the amount of the cost of demarcation of the land proposed for diversion directly to the concerned Divisional Forest Officer. The concerned Divisional Forest Officer shall demarcate the land proposed for diversion on the ground by erecting at least 4' high cement-concrete pillars duly numbered, forward and backward bearing and distance from pillar to pillar written on the pillars and DGPS co-ordinates to be inscribed on the pillars. The competent authority shall verify and issue a certificate to this effect. Photographs showing permanent boundary pillars with GPS co-ordinates to be submitted.
- (v) The charges for felling, logging and transportation of project affected trees should be collected from the User Agency at the rates approved by the State Govt and deposited with the DFO concerned for utilization immediately following the diversion of forest land.
- (vi) The certificates for the payment in respect to Sl. No. (iv) and (v) shall be furnished to this office by the user agency.
- (vii) The user agency shall provide the funds for execution for creation and maintenance of plantation of dwarf species (preferably medicinal plants) in right of way under the transmission line as per the prepared detailed scheme by the State Forest Department.
- (viii) The suggestive measures for the portion of the proposed area and two patches of compensatory afforestation area falling under elephant grid shall be adopted as per the Ministry's letter F.No. 7-25/2012-FC dated 19.11.2014 as recommended by the Chief Wildlife Warden, Govt of Assam.
- (ix) The User Agency shall obtain Environment Clearance as per the project provisions of the Environment (Protection) Act, 1986, if required under the said Act.
- (x) No labour camp shall be established on the forest land.
- (xi) The felling of trees on the forest land being diverted shall be reduced to the bare minimum and the trees should be felled under strict supervision of State Forest Department Forest.
- (xii) Sufficient quantity of firewood, preferably the alternate fuel, shall be provided by the user agency to the labourers after purchasing the same from the State Forest Department or the Forest development Corporation or any other legal source of alternate fuel.

- (xiii) The forest land shall not be used for any purpose other than that specified in the proposal and under no circumstances be transferred to any other agency, department or person.
- (xiv) The lay out plan of the proposal shall not be changed without the prior approval of the Central Government.
- (xv) The User Agency will have to obtain the Forest (Conservation) Act, 1980 clearance for stone, river sand, river boulders in forest land, if necessary.
- (xvi) The User agency will provide a vehicle for mobility of the officers of the State Govt of Assam for periodic monitoring of the projects already existing and those which are coming up in the State.
- (xvii) As per Ministry's letter No. 11-30/96-FC(Pt) dt. 14.9.2001, if the compliance of stipulated conditions is awaited from the State Govt for more than 5 (five) years, the in-principle approval would summarily be revoked considering that the user agency is no longer interested in the project.
- (xviii) All other clearance/NOCs under different applicable rules/regulations /local laws and under Forest Dwellers (Recognition of Forest Rights)Act, 2006 as required vide MoEF, New Delhi guideline No.11-9/1998-FC(pt) dated 03.08.2009 shall be complied with.

State Govt shall adhere to the conditions stipulated by the Standing Committee of National Board for Wildlife in its 50th meeting held on 07.09.2018 in addition to the condition stipulated by CWLW and NTCA as communicated by Gol's letter No. F.N. 6-111/2018WL dated 27.09.2018 which are reproduce as follows:-

- (xix) Tower shall be fenced with elephant proof fence maintained properly.
- (xx) The conductors shall be sufficiently high to avoid chances of any accident due to sagging of conductors and such guidelines in this regard.
- (xxi) The user agency shall maintain and monitor the line passing through the tiger reserve area regularly jointly with the Forest Department and incur such expenditures as and when required.
- (xxii) Necessary retrofitting measures as and when required in the interest of wild animal movement and protection shall be done by the user agency in future.
- (xxiii) The user agency shall provide sufficient funds to the Wildlife Department as per the guidelines from NBWL.
- (xxiv) Since the proposed line is a high Voltage Transmission line, it is recommended that the stretch from Tower No. 4 to 6 having dense forest should be fenced around to prevent wild elephants from coming in contact with Towers. In the above stretch, the conductors should be erected at sufficient height to avoid chances of any accident due to sagging. The Power Grid Corporation shall maintain the line after commissioning to avoid any accident to specially the wild elephants moving through the areas.
- (xxv) Insulated cables should be used in the stretch of proposed transmission line passing through the forest and important wildlife areas across its length. All power lines within 5 km of forest and scrub patches and important wildlife area across its entire length will be marked with bird diverters (with solar powered night flashers) spaced at 10 m interval.

- (xxvi) In area without the insulated cables, Power Grid shall maintain > 1.5 m spacing (larger than wrist-to-wrist or head-to-foot distance of a bird) between energized components grounded hardware. In compliance with MoEFCC's guidelines no clearance of vegetation shall be allowed for open area with sparse vegetation(such as scrublands, grasslands, wetlands, etc), A 5.8 m vertical clearance areas of the transmission and 1.2 m horizontal clearance from the vegetation could be permitted in other areas of the transmission line. These dimensions area based on clearance requirements for power lines under Rules 77, 79 and 80 read with Rules 82 A(3) in the Indian electricity Rules 1956 (as amended up to 20 November 2000) and local forest officials should monitor strict implementation of this on ground.
- (xxvii) The width of the right of way for transmission line on forest land should not be over 35 m. The alignment of the Power Line shall be made such that minimum numbers of trees are felled. Any felling/pollarding/pruning of trees for allowing electricity clearance/maintenance will be done with the permission of the local DFO. Only those trees that are of sufficient height to compromise the requirements of minimal vertical and horizontal clearance from the conductor wires at maximum sag point should be lopped.
- (xxviii) The user agency should adhere to the guidelines issued by Hon'ble National Green tribunal in its judgements in Janajagarthi Samiti verses Union of India and Others(Appeal No.10 of 2012) related to transmission line passing though the forest in Western Ghats. Forest Clearance Division, MoEF&CC in consultation with Central Electricity Authority had also issued guidelines pertaining to transmission lines passing through the forests. The user agency should follow these guidelines while construction of the power line.
- (xxix) Periodic clearing of vegetation along the power line may bring up invasive species. The plantation of native, palatable species should be actively promoted by the user agency in collaboration with the Forest Department below the Power line . This will not only prevent growth of invasive unpalatable species like but also will provide excellent forage for wild ungulates in from of its leaves and fruits. No construction/maintenance work shall be permitted between 6 pm to 7 am. Labour camps should be at least 1 km away from the boundaries of forest land along the entire of the proposed transmission line. In compliance with MoEFCC's guidelines, construction of new approach/access route will require prior approval under Forest Conservation Act, 1980.
- (xxx) The user agency shall deposit 5 % of the total project cost to the Manas Tiger Reserve Management which should utilize this money for eco-restoration, prey augmentation, reducing public dependence on forests and promoting traditional local livelihoods in the landscape. The Chief Wildlife Warden, Assam should constitute a monitoring committee comprising of members from local forest officials, MoEF&CC and NTCA, Regional Office and user agency to oversee the implementation of the project in adherence to the mitigation measures suggested herein and /or by the State Forest Department.
- (xxxi) The project proponent shall finalize the mitigation measures in consultation with state Chief Wildlife Warden on the basis of WIH guideline named "Eco-friendly Measures to Mitigate Impact on Linear Infrastructure on Wildlife" prior to start of the work of the project and the mitigation measures so finalized shall be implemented at the project cost.

(xxxii) The annual compliance report on the stipulated conditions of the NBWL shall be submitted by the user agency to the State Chief Wildlife Warden and an annual compliance certificate shall be submitted by the State CWCL to Regional Office, Shillong.

After receipt of the compliance report from the State Government on fulfillment of the conditions mentioned above, final approval will be issued in this regard. Formal transfer of forest land shall not be effected by the State Govt till final approval orders approving the diversion of forest land are issued by the Central Government.

This has the approval of Additional Principal Chief Conservator of Forests (Central).

भवदीय,



(सुनील कुमार अग्रवाल/ S.K. Aggarwal)

अतिरिक्त प्रधान मुख्य वन संरक्षक(केंद्रीय)/

Addl. Principal Chief Conservator of Forests(C)

Copy to:

प्रधान मुख्य वन संरक्षक/ Principal Chief Conservator of Forests & HoFF, असम सरकार/ Govt of Assam, पर्यावरण और वन विभाग/ Environment and Forest Department, अर्न्या भवन / Aranya Bhawan, रोप कोवर ज्योति प्रसाद अग्रवाल पथ/ Rop Konwar Jyoti Prasad Agarwal Path, श्रीमंत शंकरदेव कालखेत्र के पास/ Near Srimanta Sankardev Kalakhetra, पंजाबारी/ Panjabari, गुवाहाटी / Guwahati-781037.

अतिरिक्त प्रधान मुख्य वन संरक्षक(केंद्रीय)/
Addl. Principal Chief Conservator of Forests(C)

8/11



Government of India
Ministry of Environment, Forest and Climate Change
(Wildlife Division)

6th Floor, Vayu Wing
Indira Paryavaran Bhawan
Jor Bagh Road, Aliganj
New Delhi 110 003
Date: 26th September 2018

F.No.6-111/2018 WL

To
All Members
Standing Committee of NBWL

Sub: Minutes of 50th Meeting of the Standing Committee of National Board for Wildlife- reg.

Sir / Madam,

Kindly find enclosed copy of the Minutes of 50th Meeting of the Standing Committee of National Board for Wildlife held on 7th September 2018 through Video Conference under the chairmanship of Hon'ble Union Minister of Environment, Forest and Climate Change.

Yours faithfully,

(Dr. Pasupala Ravi)
Scientist C

E-mail: ddwlmeff@gmail.com

Encl: As above

Distribution

- (1) Secretary, MoEF&CC
- (2) DGF&SS, MoEF&CC
- (3) Member Secretary, NTCA
- (4) ADGF(FC), MoEF&CC
- (5) ADGF(WL), MoEF&CC
- (6) Director, WII, Dehradun
- (7) Director, GEER Foundation, Gandhinagar, Gujarat
- (8) Prof. R. Sukumar, Member, NBWL
- (9) Dr. H.S. Singh, Member, NBWL
- (10) Pr. Secretary (Dept. of Envi., Forest, Science & Tech.), Govt. of Andhra Pradesh

Copy to

- (1) PS to Hon'ble MoEF&CC
- (2) PPS to DGF&SS, MoEF&CC
- (3) PPS to Addl.DGF(WL), PPS to IGF(WL)

50.3.3 AGENDA ITEMS OF ASSAM

50.3.3.1 **Proposal for diversion of 208.807 ha of forestland for construction of 400 KV (Quad) Jigmelling – Alipurduar transmission line**

The IGF(WL) briefed the Standing Committee on the proposal and stated that the proposal is for the diversion of 208.807 ha of forestland from Manas Tiger Reserve for the erection of 400 KV transmission line from Jigmelling to Alipurduar. He added that the State Chief Wildlife Warden has recommended the proposal with the following conditions:

- (1) Towers shall be fenced with elephant proof fence maintained properly
- (2) The conductors shall be sufficiently high to avoid chances of any accident due to sagging of conductors and such guidelines in this regard.
- (3) The user agency shall maintain and monitor the line passing through the tiger reserve area regularly jointly with the Forest Department and incur such expenditures as and when required.
- (4) Necessary retrofitting measures as and when required in the interest of wild animal movement and protection shall be done by the user agency in future.
- (5) The user agency shall provide sufficient funds to the Wildlife Department as per the guidelines from NBWL.

The State Board for Wildlife has recommended the proposal in its 10th meeting held on 22/02/ 2018.

The NTCA recommended the proposal with following conditions:

1. Since the proposed line is a High Voltage Transmission line, it is recommended that the stretch from Tower No. 4 to 6 having dense forest should be fenced around to prevent wild elephants from coming in contact with Towers. In the above stretch, the conductors should be erected at sufficient height to avoid chances of any accident due to sagging. The Power Grid Corporation shall maintain the line after commissioning to avoid any accident to specially the wild elephants moving through the areas.
2. Insulated cables should be used in the stretch of proposed transmission line passing through the forest and important wildlife areas across its entire length. All power lines within 5 km of forest and scrub patches and important wildlife areas across its entire length will be marked with bird diverters (with solar powered night flashers) spaced at 10 m intervals.
3. In areas without insulated cable, Power Grid shall maintain > 1.5m spacing (larger than wrist-to-wrist or head-to- foot distance of a bird) between energized components and grounded hardware. In compliance with MOEFCC,s guidelines, no clearance of vegetation shall be allowed for open areas

with sparse vegetation (such as scrublands, grasslands, wetlands, wetlands etc.), A 5.8 m vertical clearance areas of the transmission and 1.2 m horizontal clearance from the vegetation could be permitted in other areas of the transmission line. These dimensions are based on clearance requirements for power lines under Rules 77,79, and 80 read with Rule 82 A (3) in the Indian electricity Rules 1956 (as amended up to 20 November 2000) and local forest officials should monitor strict implementation of this on ground.

4. The width of the right of way for the transmission line on forest land should not be over 35 m. The alignment of the Power line should be made such that minimum numbers of trees are felled. Any felling/ pollarding/ pruning of trees for allowing electrical clearance/ maintenance will be done with the permission of the local DFO. Only those trees that are of sufficient height to compromise the requirements of minimal vertical and horizontal clearance from the conductor wires at maximum sag point should be lopped.
5. The user agency should adhere to the guidelines issued by Hon'ble National Green tribunal in its judgments in Janajagarithi Samiti versus Union of India and Others (Appeal No.10 of 2012) related to transmission line passing through the forest in Western Ghats. Forest Clearance Division, MoEF&CC in consultation with Central Electricity Authority had also issued guidelines pertaining to transmission lines passing through the forests. The User agency should follow these guidelines while construction the Power line.
6. Periodic clearing of vegetation along the power line may bring up invasive species. The plantation of native, palatable species should be actively promoted by the user agency in collaboration with the Forest Department below the Power line. This will not only prevent growth of invasive unpalatable species like but also will provide excellent forage for wild ungulates in from of its leaves and fruits. No construction/ maintenance work shall be permitted between 6 PM to 7 AM. Labour camps should be at least 1 km away from the boundaries of forest land along the entire of the proposed transmission line. In compliance with MoEFCC's guidelines, construction of new approach/ access route will require prior approval under Forest Conservation Act, 1980.
7. The user agency shall deposit 5% of the total project cost to the Manas Tiger Reserve Management which should utilize this money for eco- restoration, prey augmentation, reducing public dependence on forests and promoting traditional local livelihoods in the landscape. The Chief Wildlife Warden, Assam should constitute a monitoring committee comprising of members from local forest officials, MoEF &CC and NTCA regional office and user agency to oversee the implementation of the project in adherence to the mitigation measures suggested herein and / or by State Forest Department.

After discussions the Standing Committee decided to recommend the proposal along with the conditions and the wildlife mitigation measures stipulated by the State Chief Wildlife Warden and the NTCA.

In addition to the condition imposed by the state CWLW the project proponent shall finalize the mitigation measures in consultation with state CWLW on the basis of WII guidelines named “Eco-friendly Measures to Mitigate Impacts on Linear Infrastructures on Wildlife” prior to start of the work of the project and the mitigation measures so finalized shall be implemented at the project cost .

The annual compliance report on the stipulated conditions should be submitted by the User Agency to the State Chief Wildlife Warden and an annual compliance certificate shall be submitted by the State CWLW to GoI.

50.3.4 AGENDA ITEMS OF DELHI

50.3.4.1 Construction of CBI Residential Complex

The IGF(WL) briefed the Standing Committee on the proposal and stated that the proposal is for the construction of CBI residential complex in the ESZ of Asola Bhatti Wildlife Sanctuary. He added that the State Chief Wildlife Warden has recommended the subject to deposit of 5% of project fund for soil moisture conservation works and improvement of wildlife habitat in the sanctuary in larger interest of wildlife habitat conservation. The area falling under ridge / morphological ridge of 0.50 ha should be brought under dense plantation of indigenous species in supervision of the Department of Forest & wildlife, Government of NCT of Delhi by a professional agency / group to avoid noise and air pollution and maintenance of water table. No soil / Badarpur excavation is permitted in ridge / morphological ridge area contiguous to the project site. Curtains / PVC rolls should be raised to restrict the speed of dust pollution in the surroundings.

The matter was before the Hon’ble Supreme Court and CEC was asked by the court to submit their report. CEC in its report dated 02.08.2018 had recommended for the construction of CBI residential complex. Hon’ble Supreme Court in its order dated 29.08.2018 in writ petition no. 202/1995 has accepted the recommendations of CEC.

After discussions the Standing Committee decided to recommend the proposal along with the conditions stipulated by the State Chief Wildlife Warden.



सत्यमेव जयते

भारत सरकार
GOVERNMENT OF INDIA
पर्यावरण, वन एवं जलवायु परिवर्तन मंत्रालय
MINISTRY OF ENVIRONMENT, FORESTS & CLIMATE CHANGE
Regional Office (Southern Zone),
Kendriya Sadan, IVth Floor, E& F Wings, 17th Main Road,
IInd Block, Koramangala, Bangalore – 560 034,
Tel.No.080-25635905, E.Mail: rosz.bng-mef@nic.in



BY SPEED POST
F.No.4-KLB1153/2018-BANI/968
Dated the 24th September, 2019

To

The Principal Secretary,
Government of Kerala,
Forests & Wildlife (C) Department,
Secretariat, Thiruvananthapuram,
Kerala, PIN – 695 001.

Subject: Diversion of 0.244 ha. (0.098 ha. from Peechi Wildlife Sanctuary & 0.146 ha. from Thrissur Forest Division) of forest land for laying of a ± 320 KV HVDC underground Power Cable from Vadakkancherry to Thrissur in Kerala in the utility corridor of NH 544 (in a concrete duct bank of 2M width) in favour of M/s. Power Grid Corporation of India Ltd.

Sir,

Please refer to the State Government's letter No. C3/22/2018/F&WLD dated 02/04/2018 and PCCF (Wildlife) & Chief Wildlife Warden's letter No. WL4-40979/2017 dated 19/09/2018 on the above mentioned subject seeking prior approval of the Central Government under Section '2' of the Forest (Conservation) Act, 1980. The in-principle (Stage-I) approval to the project was accorded by the Central Government vide letter of even number dated 9th October, 2018. The State Government vide letter No. C3/22/2018/F&WLD dated 22/06/2019 and PCCF's letter No. FC2-27056/2017 dated 04/09/2019 have reported compliance to the conditions stipulated by the Central Government in the in-principle approval.

After careful consideration of the proposal of the State Government, I am directed to convey Central Government's approval (Stage-II) under Section '2' of Forest (Conservation) Act, 1980 for diversion of 0.244 ha. (0.098 ha. from Peechi Wildlife Sanctuary & 0.146 ha. from Thrissur Forest Division) of forest land for laying of a ± 320 KV HVDC underground Power Cable from Vadakkancherry to Thrissur in Kerala in the utility corridor of NH 544 (in a concrete duct bank of 2M width) in favour of M/s. Power Grid Corporation of India Ltd, subject to the following conditions:-

1. The legal status of forest land shall remain unchanged.
2. The boundary of the forest land to be diverted shall be suitably demarcated on ground at the project cost as per the directions of concerned Divisional Forest Officer, keeping in view the movement of wildlife.
3. Additional amount of the Net Present Value (NPV) of the diverted forest land if any, becoming due after revision of the same by the Hon'ble Supreme Court of India in future, shall be charged by the State Government from the user agency. The user agency shall furnish an undertaking to this effect.

Continued...

Sgawp

4. The wildlife mitigation measures as approved by the Chief Wildlife Warden must be strictly implemented.
5. The layout plan of the proposal shall not be changed without prior approval of Central Government.
6. The total forest area utilized for the project shall not exceed 0.244 ha. The Forest land shall be used only for the purpose for which it is diverted.
7. The forest land proposed to be diverted shall under no circumstances be transferred to any other agencies, department or person without prior approval of Government of India.
8. Any other condition that the Ministry of Environment, Forest and Climate Change may stipulate from time to time in the interest of conservation, protection and development of Forest and Wildlife.
9. Violation of any of these conditions will amount to violation of Forest (Conservation) Act, 1980 and action would be taken as per the MoEF&CC Guideline F.No.11-42/2017-FC dated 29/01/2018.
10. The State Government and user agency shall comply the provisions of the all Acts, Rules, Regulations, Guidelines, NGT order & Hon'ble Court Order (s) pertaining to this project, if any, for the time being in force, as applicable to the project.

Yours faithfully,

(M.K.Shambhu)

Deputy Inspector General of Forests (Central)

Copy to:-

1. The Director General of Forests & Special Secretary to Govt. of India, Ministry of Environment, Forests and Climate Change, Indira Paryavaran Bhavan, Agni Wing, Aliganj, Jor Bagh Road, New Delhi – 110 003.
2. The Principal Chief Conservator of Forests, Forests Deptt, Government of Kerala, 'Vanalakshmi', 1st Floor, Forest Headquarters, Vazhuthacaud, Thiruvananthapuram-695 014, Kerala.
3. The Additional Principal Chief Conservator of Forests (Special Afforestation) & Nodal Officer (FCA), Office of the Principal Chief Conservator of Forests, Forests Department, Government of Kerala, 'Vanalakshmi', 1st Floor, Forest Headquarters, Vazhuthacaud, Thiruvananthapuram, PIN- 695 014, Kerala.
4. M/s. Power Grid Corporation of India Ltd, SRTS-II, RHQ, Near RTO Driving Test Track, Singanayakanahalli, Yelhanka Hobli, Bangalore -560 064.
- ✓ 5. Guard file.



(M.K.Shambhu)

Deputy Inspector General of Forests (Central)



Government of India
Ministry of Environment, Forest and Climate Change
(Wildlife Division)

6th Floor, Vayu Wing
Indira Paryavaran Bhawan
Jor Bag Road, Aliganj
New Delhi 110 003

F.No. 6-4/2018 WL

Date: 07.02.2018

To
All Members
Standing Committee of NBWL

Sub: Minutes of 47th Meeting of the Standing Committee of NBWL- reg.

Sir/Madam,

Kindly find enclosed copy of the Minutes of 47th Meeting of the Standing Committee of National Board for Wildlife held on **25th January 2018 at 01.00 PM in Teesta Conference Hall, I Floor, Vayu Block, Indira Paryavaran Bhavan**, New Delhi under the chairmanship of Hon'ble Union Minister of Environment, Forest and Climate Change.

Yours faithfully,

(Dr. Pasupala Ravi)
Scientist C

E-mail: ddwlmef@gmail.com

Encl: As above

Distribution

- (1) Secretary, MoEF&CC
- (2) DGF&SS, MoEF&CC
- (3) Member Secretary, NTCA
- (4) ADGF(FC), MoEF&CC
- (5) ADGF(WL), MoEF&CC
- (6) Director, WII, Dehradun
- (7) Director, GEER Foundation, Gandhinagar, Gujarat
- (8) Prof. R. Sukumar, Member, NBWL
- (9) Dr. H.S. Singh, Member, NBWL
- (10) Pr. Secretary (Dept. of Envi., Forest, Science & Tech.), Govt. of Andhra Pradesh

Copy to

- (1) PS to Hon'ble MoEF&CC
- (2) PPS to DGF&SS, MoEF&CC
- (3) PPS to Addl.DGF(WL), Member Secretary, NBWL
- (4) PPS to IGF(WL)/PS to DIG(WL)/PS to JD(WL)

- [4] The User Agency shall not establish any temporary or permanent labour camp in the Purna Wildlife Sanctuary.
- [5] The User Agency or his contractor shall not create any fire places inside the Purna Wildlife Sanctuary.
- [6] All the material required for the work shall be prepared outside the sanctuary.
- [7] The work in the National Park will be allowed only in the daytime from 8 AM to 6 PM.
- [8] Approval under Forest Conservation Act, 1980 if required shall be obtained separately for use of forestland.
- [9] The User Agency shall deposit NPV for the use of land of Protected Area as per the existing rates.
- [10] The User Agency shall create a speed breaker at a distance of every 500 m.

After discussions, the Standing Committee decided to recommend the proposal along with the conditions and mitigation measures stipulated by the CWLW with the condition that Wildlife Mitigation Plan will be prepared and implemented by the CWLW / State Government at the project cost and standard mitigation measures suggested by the by the WII in its document named “*Eco-friendly Measures to Mitigate Impacts on Linear Infrastructures on Wildlife*” should be adopted by the user agency in consultation with the CWLW.

47.4.1.10 Laying of ± 320 kv HVDC underground power cable from Vadakkancherri to Thrissur

The DIGF(WL) briefed the Standing Committee on the proposal and stated that the project involves the diversion of 0.098 ha forestland from the Peechi Vazhani Wildlife Sanctuary for underground laying of power cable of 12" diameter of length of 490 m and width of 2 m from Vadakkancherri to Thrissur. The project would provide electricity to the households and for irrigation purpose in the region. He added that the State CWLW has recommended the proposal with the condition that the project proponent would construct rail fence barrier in the stretch that is falling in the Peechi Vazhani Wildlife Sanctuary.

After discussions, the Standing Committee decided to recommend the proposal along with the conditions and mitigation measures stipulated by the CWLW with the condition that Wildlife Mitigation Plan will be prepared and implemented by the CWLW / State Government at

the project cost and standard mitigation measures should be adopted by the user agency in consultation with the CWLW.

47.4.1.11 Construction of 27.5 km double railway line and its electrification in Katni – Singrauli Section of Sanjay Tiger Reserve

The DIGF(WL) briefed the Standing Committee on the proposal and stated that the project involves the diversion of 27.5 ha of forestland from the Sanjay Tiger Reserve for the construction of railway line from Katni to Singrauli of length of 27.5 km and width of 10 m (km 1203/5 to km 1231/0). This proposed project would improve the railway connectivity in the State. He added that the State CWLW has recommended the proposal with the following conditions:

- [1] The project proponent shall ensure that minimum vehicular movement is done. Any consignment above 2.5 MT would be routed through railway line and not through road of the reserve.
- [2] No damage should be caused to flora and fauna of the said area by the project proponent.
- [3] During construction, the user agency shall not use noisy machinery.
- [4] The entire electric supply shall be insulated and with cable so as to avoid any electric shock. The electric cables shall be overhead.
- [5] The contracting agency of the project property will strictly follow the provisions of the Wildlife (Protection) Act 1972.
- [6] The user agency and / or contractor will not use the area of the sanctuary which is not included in the project for the movement, transpiration and any other purpose of the construction and maintenance of the project.
- [7] The User agency will take utmost care and precaution so that no damage is caused to wildlife.
- [8] 5% of the project cost corresponding to the area falling in the protected area would be paid by the use agency for the purpose of development of Sanjay Tiger Reserve.
- [9] Considering the national interest, permission for construction of only crossing section by laying two additional lines (72 m length + 5.3 m width of either side) shall be allowed on forestland already diverted in favour of railways and handed over to them in 1969.
- [10] No additional forestland should be demanded / diverted for ancillary activities like approach roads, construction of building, etc.



भारत सरकार
पर्यावरण, वन एवं जलवायु परिवर्तन मंत्रालय
क्षेत्रीय कार्यालय (मध्य)
Ministry of Environment, Forest & Climate Change
Regional Office (Central Region)



केन्द्रीय भवन, पंचम तल, सेक्टर-11, अलिगंज, लखनऊ-226024
Kendriya Bhawan, 5th Floor, Sector-11, Aliganj, Lucknow 226024. Telefax-2326696
Email: roc.lko met@gov.in, m_env@rediffmail.com

पत्र सं० 8सी/यूपी०/०४/१००/२०१९/एफ.सी. 1/612

दिनांक: 12.06.2020

सेवा में,

मुख्य वन संरक्षक (वन संरक्षण)
एवं नोडल अधिकारी,
वन विभाग, 17 राणा प्रताप मार्ग, लखनऊ।

(ऑनलाईन प्रस्ताव संख्या-FP/UP/Trans/40369/2019)

विषय: जनपद बरेली में 400 के०वी० डी०सी० धौलीगंगा-बरेली पारेषण लाईन हेतु भोजीपुरा-टनकपुर रेल मार्ग कि०मी० 296-297 के मध्य 0.1150 हे० संरक्षित वन भूमि के गैर वाणिजी प्रयोग एवं बिना वृक्ष के पातन की अनुमति के सम्बन्ध में।

सन्दर्भ: मुख्य वन संरक्षक एवं नोडल अधिकारी, उत्तर प्रदेश का पत्रांक 2039/11-सी FP/UP/Trans/40369/2019, लखनऊ, दिनांक 27.05.2020.

महोदय,

उपरोक्त विषय पर मुख्य वन संरक्षक एवं नोडल अधिकारी, उत्तर प्रदेश का पत्रांक-1048/11-सी-FP/UP/Trans/40369/2019, लखनऊ, दिनांक-26.11.2019 का आशय ग्रहण करने का कष्ट करें। जिसके द्वारा विषयांकित प्रस्ताव पर वन (संरक्षण) अधिनियम, 1980 की धारा(2) के अन्तर्गत भारत सरकार की स्वीकृति भंगी थी।

प्रकरण में विद्यमानान्त, मुझे आपको यह सूचित करने का निर्देश हुआ है कि केन्द्र सरकार जनपद बरेली में 400 के०वी० डी०सी० धौलीगंगा-बरेली पारेषण लाईन हेतु भोजीपुरा-टनकपुर रेल मार्ग कि०मी० 296-297 के मध्य 0.1150 हे० संरक्षित वन भूमि के गैर वाणिजी प्रयोग एवं बिना वृक्ष के पातन की विधिवत स्वीकृति निम्नलिखित शर्तों पर प्रदान करती है:-

1. Legal status of the forest land shall remain unchanged.
2. Compensatory afforestation shall be taken up by the Forest Department over 0.23 ha. degraded forest land (Compartment No. Not provided, Village-Bhojipura, Tehsil-Barcily range. District- Bareilly) at the cost of the user agency. As far as possible, a mixture of local indigenous species shall be planted and monoculture of any species may be avoided.
3. The complete compliance of the FRA, 2006 shall be ensured by way of prescribed certificate from the concerned District Collector.
4. The user agency at its cost shall provide bird deflectors, which are to be fixed on upper conductor of transmission line at suitable intervals to avoid bird hits.
5. The User Agency shall comply with the guidelines for laying transmission lines through forest areas issued by Ministry vide letter no. 7-25/2012-FC dated 05/05/2014 & 19/11/2014.
6. User Agency shall obtain Environmental Clearance as per the provisions of the Environmental (Protection) Act, 1986, if applicable.
7. The layout plan of the proposal shall not be changed without prior approval of Central Government.
8. No labour camp shall be established on the forest land.
9. Plantation of dwarf species (preferably medicinal plants) in ROW under transmission line shall be taken up by forest department at the cost of User agency.

10. Sufficient firewood, preferably the alternate fuel, shall be provided by the User Agency to the labourer after purchasing the same from the State Forest Department or the Forest Development Corporation or any other legal source of alternate fuel.
11. The boundary of the diverted forest land shall be suitably demarcated on ground at the project cost, as per the directions of the concerned Divisional Forest Officer.
12. No additional or new path will be constructed inside the forest area for transportation of construction materials for execution of the project work.
13. The period of diversion under this approval shall be co-terminus with the period of lease to be granted in favour of the user agency or the project life, whichever is less.
14. The forest land shall not be used for any purpose other than that specified in the project proposal.
15. The User Agency and the State Government shall ensure compliance of all the Court orders, provisions, rules, regulations and guidelines for the time being in force as applicable to the project.
16. The forest land proposed to be diverted shall under no circumstances be transferred to any other agencies, department or person without prior approval of Govt. of India.
17. Violation of any of these conditions will amount to violation of Forest (Conservation) Act, 1980 and action would be taken as per the MoEF&CC Guideline F. No. 11-42/2017-FC dt 29/01/2018.
18. Any other condition that the Ministry of Environment, Forests & Climate Change may stipulate from time to time in the interest of conservation, protection and development of forests & wildlife.

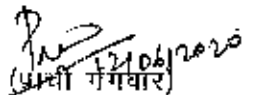
भवदीया,

(प्राची गंगवार)

उप वन महानिरीक्षक (केन्द्रीय)

प्रतिलिपि सूचनार्थ एवं आवश्यक कार्यवाही हेतु :-

1. प्रमुख सचिव, उत्तर प्रदेश शासन, पर्यावरण, वन एवं जलवायु परिवर्तन, अग्रमंज-2, लखनऊ।
2. प्रभागीय निदेशक, सामाजिक वानिकी प्रभाग, बरेली।
3. प्रबंधक, टी02ल0एम0, फॉवर ग्रिड कॉर्पोरेशन ऑफ इंडिया लि0, 400 के0वी0 सपकेन्द्र आटा-गमहा, बरेली 243202.
4. पर्यावरण, वन एवं जलवायु परिवर्तन मंत्रालय, क्षेत्रीय कार्यालय, लखनऊ को वेबसाइट पर अपलोडिंग हेतु/अवकाश पत्रावली।


(प्राची गंगवार)

उप वन महानिरीक्षक (केन्द्रीय)



भारत सरकार
GOVERNMENT OF INDIA
पर्यावरण, वन एवं जलवायु परिवर्तन मंत्रालय
MINISTRY OF ENVIRONMENT, FOREST
& CLIMATE CHANGE

Regional Office (WCZ)
Ground Floor, East Wing
New Secretariat Building
Civil Lines, Nagpur - 440001
E-mail: apccfcentral-ngp-mef@gov.in

F.No. FC-III/MH-30/2018-NGP /7272

Date: 29.09.2020

To,

The Secretary (Forests),
Revenue and Forest Department,
Hutatma Rajguru Chowk
Madam Cama Marg
Mantralaya, Mumbai - 400032.

Sub: Diversion of 432,679 ha of Forest Land in favour of Powergrid, Bramhapuri for Construction of 800 KV D/C Raigarh - Pugalur Transmission Line passing through the Forest area in total 76 Villages of Four Forest Division in Chandrapur District in the State of Maharashtra - Regarding.

Sir,

The undersigned is directed to refer to State Government of Maharashtra letter no. FLD-2018/C.R.185/F-10 dated 07.06.2018 and APCCF & Nodal Officer (FCA), Maharashtra letter no. Desk-17/NC/ILD-1428/18-19 dated 23.05.2018 on the above subject seeking prior approval of the Central Government under Section-2 of the Forest (Conservation) Act, 1980. After careful examination of the proposal of the State Government, 'in-principle' approval was accorded by the Central Government vide its letter of even number dated 05.09.2018. The Addl. PCCF & Nodal Officer (FCA), Government of Maharashtra has now submitted a report on the compliance of conditions stipulated in the 'in-principle' approval and requested the State Government to grant final approval to the proposal.

In this connection, I am directed to say that on the basis of compliance report submitted by the Addl. PCCF & Nodal Officer (FCA), Government of Maharashtra vide his letter No. Desk-17/NC/RS-1/ID-12610/1746/18-19 dated 07.12.2018 and letter No. Desk-17/NC/ILD-12610/170/19-20 dated 08.05.2019 & letter No. Desk-17/NC/ILD-12610/430/18-19 dated 31.08.2020 forwarding additional information as sought by this Office vide letters of even number dated 31.01.2019 and 29.05.2019, the Central Government hereby accords 'final approval' under Section - 2 of the Forest (Conservation) Act, 1980 for diversion of 432,679 ha of Forest Land in favour of Powergrid, Bramhapuri for Construction of 800 KV D/C Raigarh - Pugalur Transmission Line passing through the Forest area in total 76 Villages of Four Forest Division in Chandrapur District in the State of Maharashtra subject to following conditions:

- i. Legal status of the forest land shall remain unchanged;
- ii. **Compensatory afforestation:**
 - a. Compensatory afforestation shall be taken up by the Forest Department over 866.00 ha degraded forest land (Comptt. No. 763, 238, Village- Pardi Thaware, Range- Nagbhi & Sindewahi, District- Bramhapuri, Comptt. No. 518, 1800, 1713, 157, 1461P, 201, 907, 899, 2, 1, 5, 10, 12 & 14B, Village- Chandrapur, Snoli, Bhadravati & Warora, Range- Morva, Saoli, Pathari,

Vyahd, Musad, Tembhurda & Dahegaon, District- Chandrapur & Comptt. No. 586, 543, 589, Village- Borghat, Bembal & Ghosari, Round- Ghosari, Beat- Navegaon (Bhujla), Pipari Dixit & Ghosari, District- Chandrapur) at the cost of the User Agency. As far as possible, a mixture of local indigenous species along with 10% RET species of Kolhapur Division shall be planted and monoculture of any species may be avoided;

- iii. The complete compliance of the FRA, 2006 shall be ensured by way of prescribed certificate from the concerned District Collector;
- iv. *User Agency shall develop a separate nursery at one or more places to raise at least 50,000 seedlings of forestry species along with bamboo, fruit bearing, medicinal, ornamental and indigenous/local every year. At least 50% of seedlings shall be planted by User Agency in the vicinity of project area including forest area and for better relation with local people residing in vicinity of proposed area, User Agency shall voluntarily distribute remaining 50% of seedlings to them free of cost. A compliance report including species wise details of seedlings raised, location of plantation area and details of villagers to whom seedlings have been distributed need to be prepared every six month and submitted to Regional Office of MoEF&CC;*
- v. **The User Agency at its cost shall provide 'bird deflectors' which are to be fixed on upper conductor of transmission line at suitable intervals to avoid bird hits in consultation with the PCCF (Wildlife), Maharashtra;**
- vi. **The User Agency shall comply with the guidelines for laying transmission lines through forest areas issued by Ministry vide letter no. 7-25/2012-FC dated 05/05/2014 & 19/11/2014;**
- vii. **As the proposed project comes under the corridor of Indravati- Tadoba Andhari Tiger Reserve and Chaprala Wildlife Sanctuary, the User Agency shall increase the height of towers in the forest area from 18.0 meters to 24.0 meters, in accordance with the recommendations made by the Wildlife Institute of India, Dehradun;**
- viii. **Comments of the PCCF (Wildlife) on special protection measures, if any required to be taken for the conservation and protection of the Wildlife specially Schedule-I species should be obtained and suggestions/recommendations made by the PCCF (Wildlife) should be implemented by the User Agency during the construction of the transmission line;**
- ix. **The recommendations to be made by the NTCA, New Delhi, shall be a binding on the User Agency. The User Agency shall ensure compliance of additional conditions, if any recommended by the NTCA, New Delhi;**
- x. **User Agency shall obtain Environmental Clearance as per the provisions of the Environmental (Protection) Act, 1986, if applicable;**
- xi. **The layout plan of the proposal shall not be changed without prior approval of Central Government;**
- xii. **No labour camp shall be established on the forest land;**
- xiii. **Sufficient firewood, preferably the alternate fuel, shall be provided by the User Agency to the labourer after purchasing the same from the State Forest Department or the Forest Development Corporation or any other legal source of alternate fuel;**

- iv. The boundary of the diverted forest land shall be suitably demarcated on ground at the project cost, as per the directions of the concerned Divisional Forest Officer;
- xv. No additional or new path will be constructed inside the forest area for transportation of construction materials for execution of the project work;
- xvi. The period of diversion under this approval shall be co-terminus with the period of lease to be granted in favour of the user agency or the project life, whichever is less;
- xvii. The forest land shall not be used for any purpose other than that specified in the project proposal;
- xviii. The User Agency and the State Government shall ensure compliance of all the Court orders, provisions, rules, regulations and guidelines for the time being in force as applicable to the project;
- xix. The forest land proposed to be diverted shall under no circumstances be transferred to any other agencies, department or person without prior approval of Govt. of India;
- xx. Violation of any of these conditions will amount to violation of Forest (Conservation) Act, 1980 and action would be taken as per the MoEF&CC Guideline F. No. 11-42/2017-FC dt 29/01/2018;
- xxi. Any other condition that the Ministry of Environment, Forests & Climate Change may stipulate from time to time in the interest of conservation, protection and development of forests & wildlife.


This issues with the approval of DDGF (Central), Regional Office (WCZ), MoEF & CC, Nagpur.

Yours faithfully,


(C.B. Tashildar)
AIGF (Central)

Copy to:

- ✓ 1. The PCCF (HoFF), Government of Maharashtra, Nagpur
2. The Addl. PCCF & Nodal Officer (FCA), Government of Maharashtra, Nagpur.
3. User Agency.
4. Guard File.


(C.B. Tashildar)
AIGF (Central)