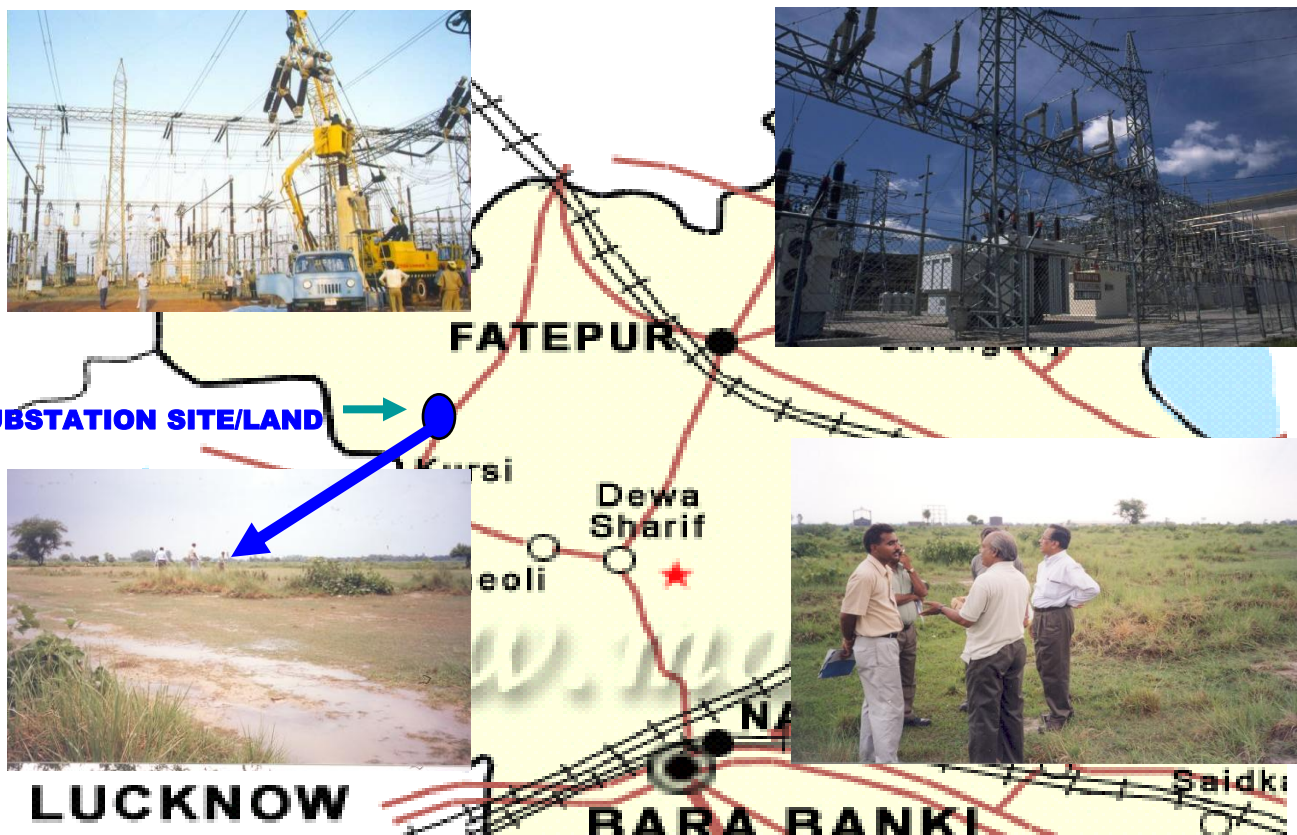


The World Bank Visit

SOCIAL ASSESSMENT REPORT

FOR

400/220 KV SUBSTATION AT LUCKNOW



ENVIRONMENT AND SOCIAL MANAGEMENT

POWER GRID CORPORATION OF INDIA LTD.

(A GOVERNMENT OF INDIA ENTERPRISE)



Distribution of Compensation by SLAO on POWERGRID's Initiative



Distribution of Compensation by SLAO on POWERGRID's Initiative