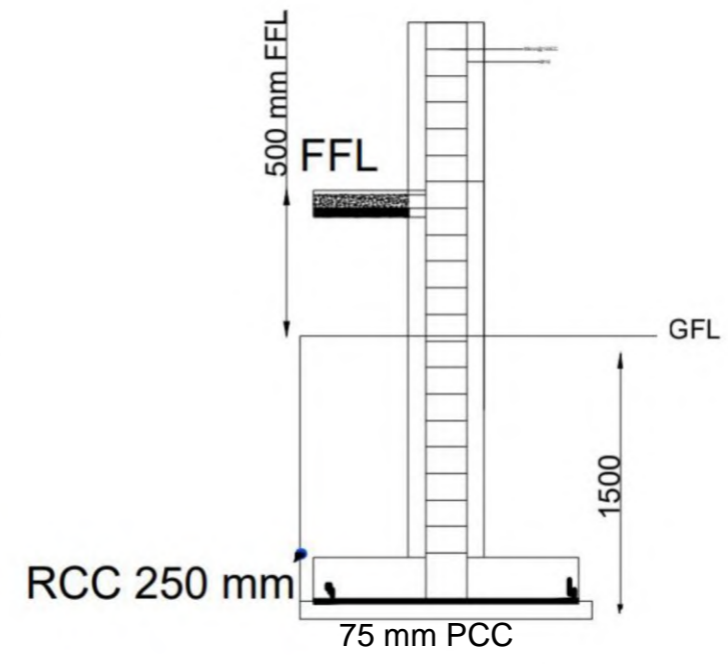
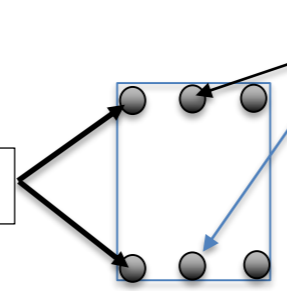


**C-1**



**C-2**

4 nos 16mm dia at all corners

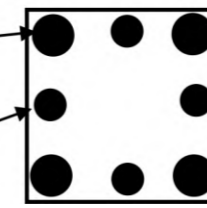


Column-1 C/s

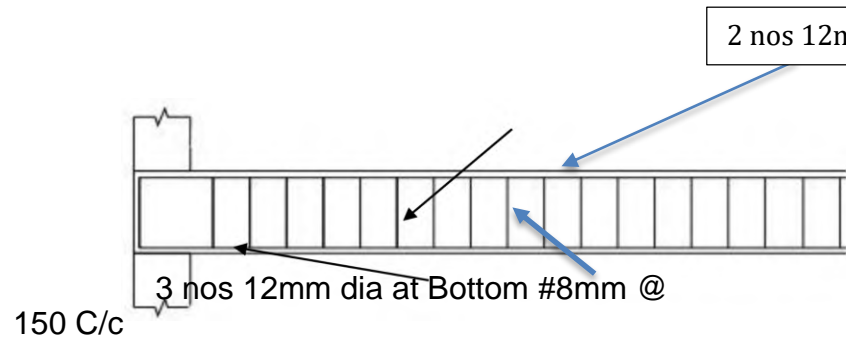
2 nos 12mm dia

4Nos@16#

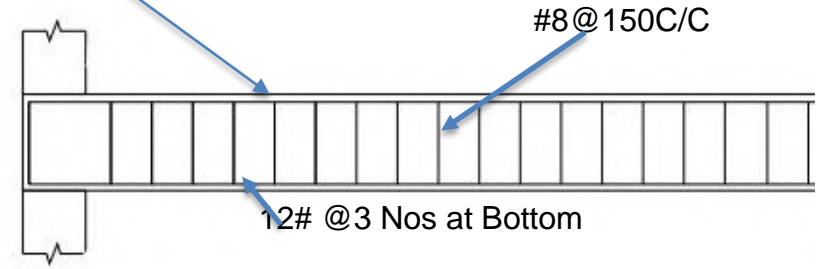
4Nos@12#



Column-2 Cross section



P.B 1 & R.B.1 :230X450 MM



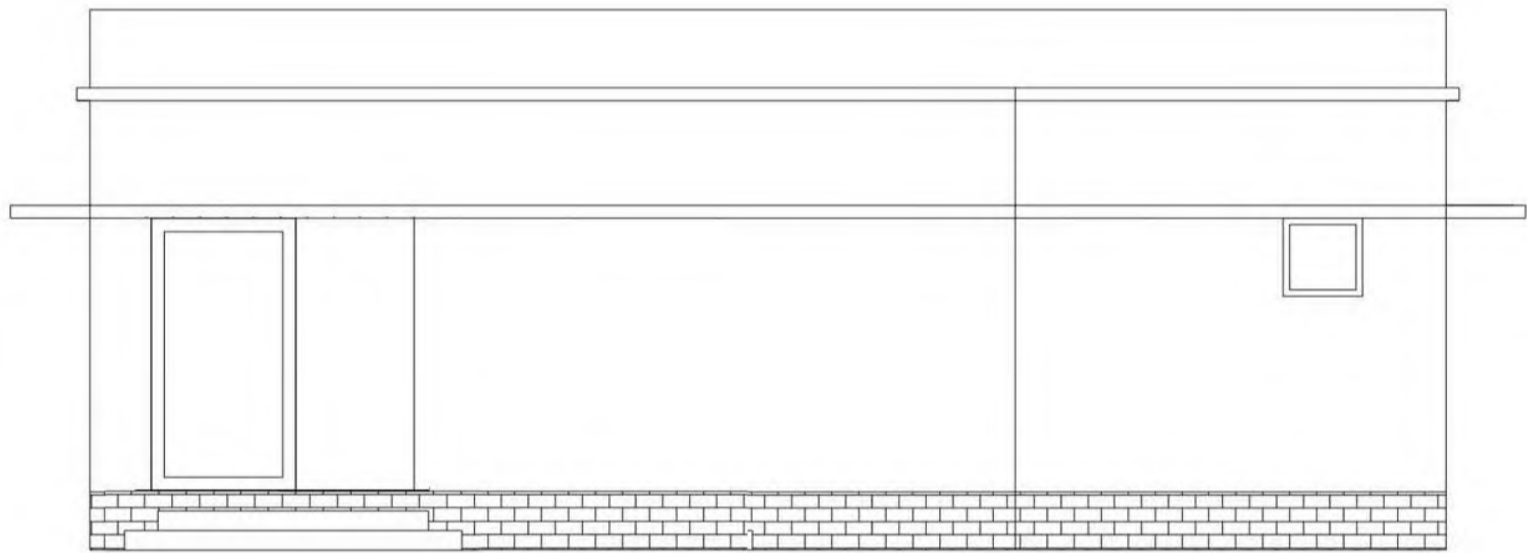
P.B 2 & R.B.2 :230X300 MM

### REINFORCEMENT DETAIL OF COLUMN

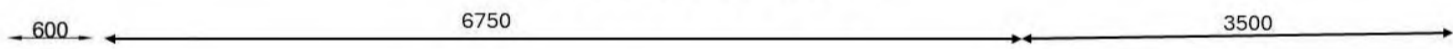
Index	Description	Size	Nos	Main Reinforcement	Lateral ties
C-1	Rect. Column	230x300 mm	15	4 Nos16mm & 2 nos 12mm	8#@125mm c/c from tie beam & roof beam upto 600mm length & remaining @ 200 c/c
C-2	Sq. Column	300x300 mm	5	4 Nos 16 mm & 4 Nos 12 mm	Same as above

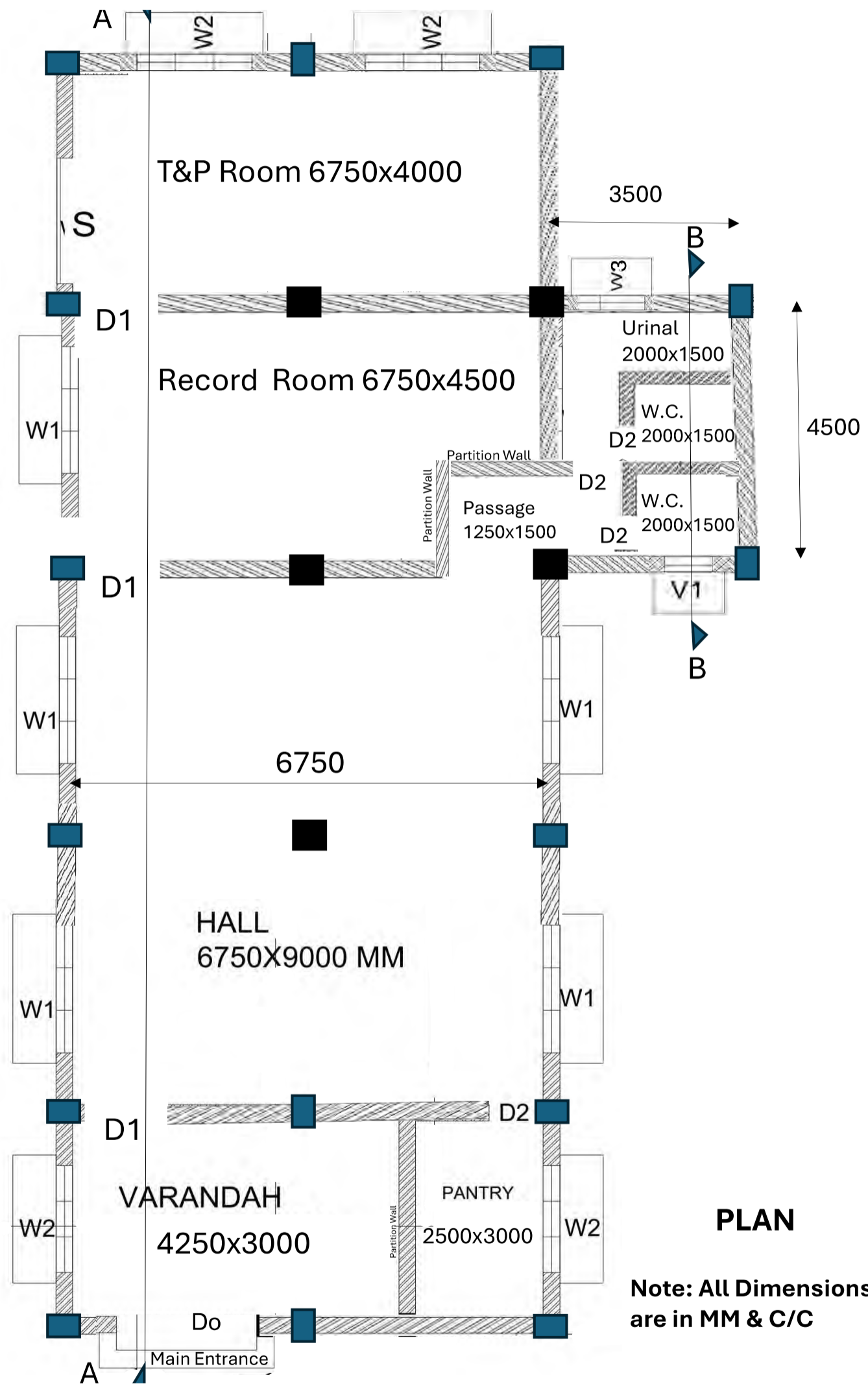
### REINFORCEMENT DETAIL OF FOOTING

Index	Description	Nos	Foundation Depth	Spacing of bar	Size of Footing	Bottom Short bar	Bottom Long bar
F-1	Rect. Footing	15	1500 mm	150 mm C/C	1500x1800 mm	13 Nos 12#	11 Nos 12#
F-2	Sq. Footing	5	1500mm	150 mm C/C	1800x1800 mm	13 Nos 12#	13 Nos 12#



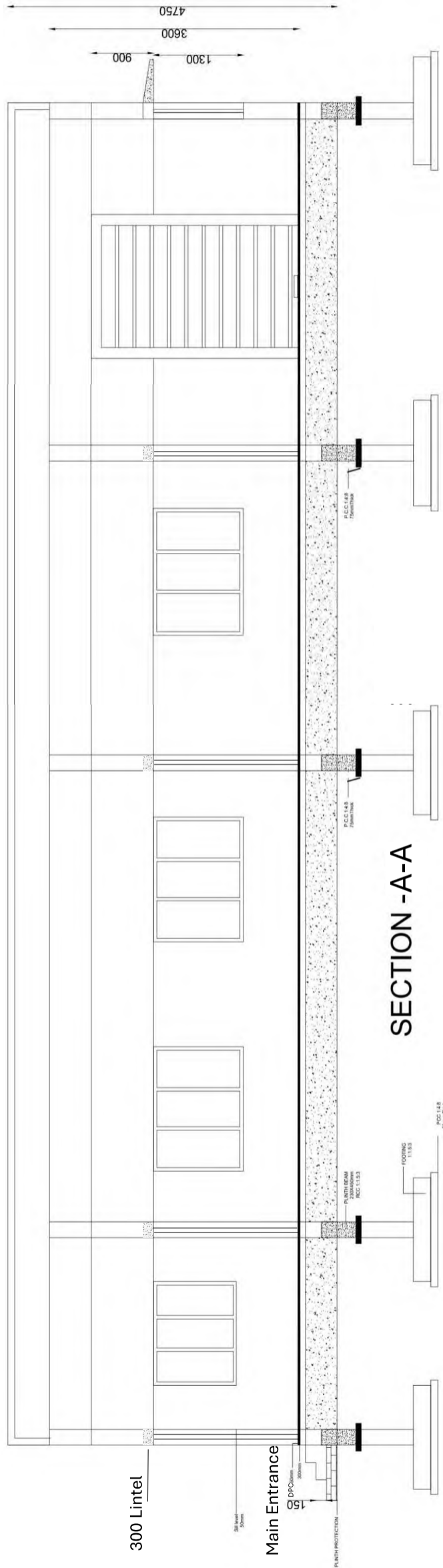
ELEVATION





**PLAN**

**Note: All Dimensions are in MM & C/C**



300 Lintel

Main Entrance

SECTION -A-A

4750  
3600  
1300  
900

DPC below

05

PUNY PROTECTION

RCC 1:1.5

RCC 1:1.25

1:1.25

1:1.25

1:1.25

1:1.25

1:1.25

1:1.25

1:1.25

1:1.25

1:1.25

1:1.25

1:1.25

1:1.25

1:1.25

1:1.25

1:1.25

1:1.25

1:1.25

1:1.25

1:1.25

1:1.25

1:1.25

1:1.25

1:1.25

1:1.25

1:1.25

1:1.25

1:1.25

1:1.25

1:1.25

1:1.25

1:1.25

1:1.25

1:1.25

1:1.25

1:1.25

1:1.25

1:1.25

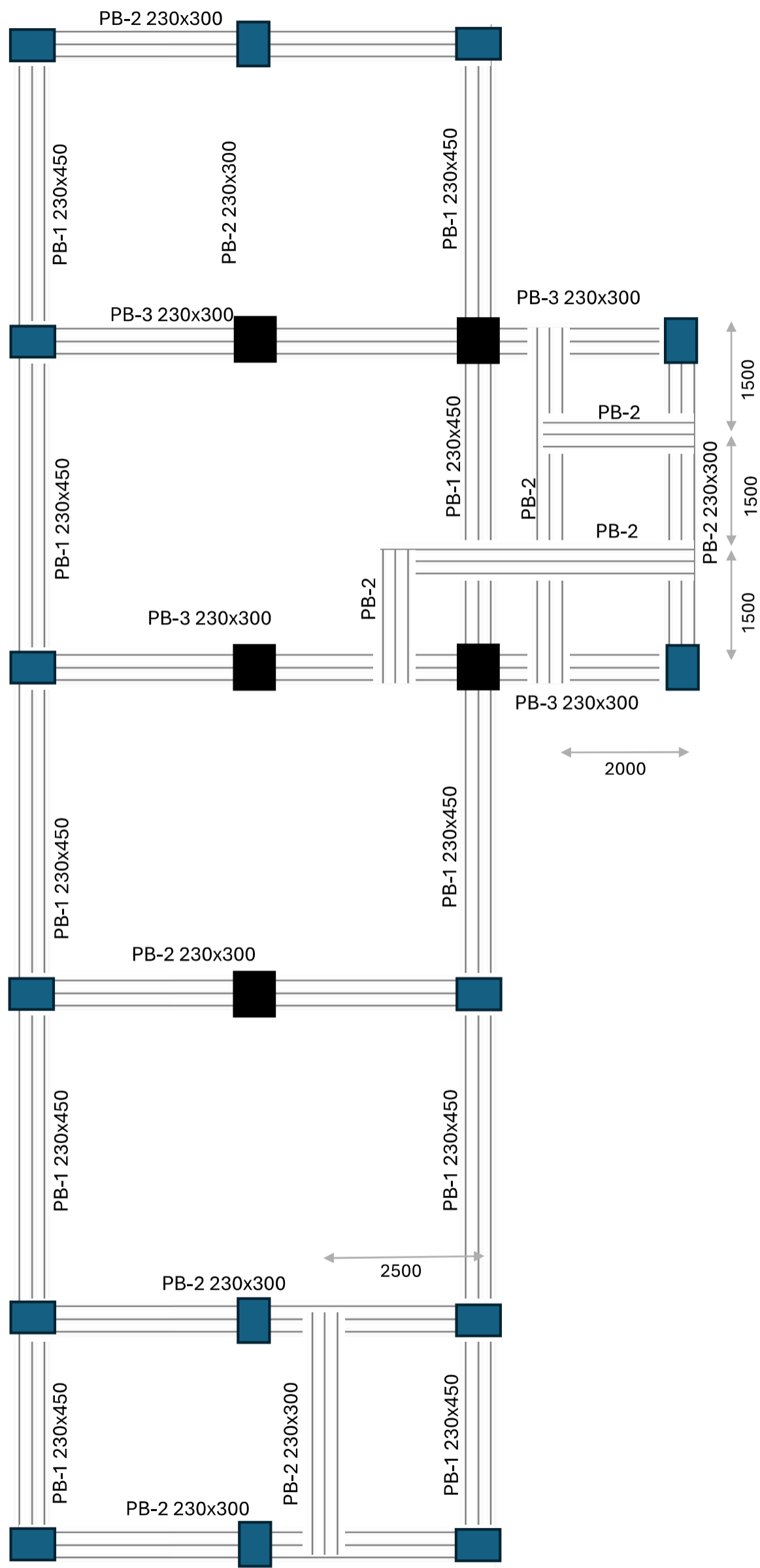
1:1.25

1:1.25

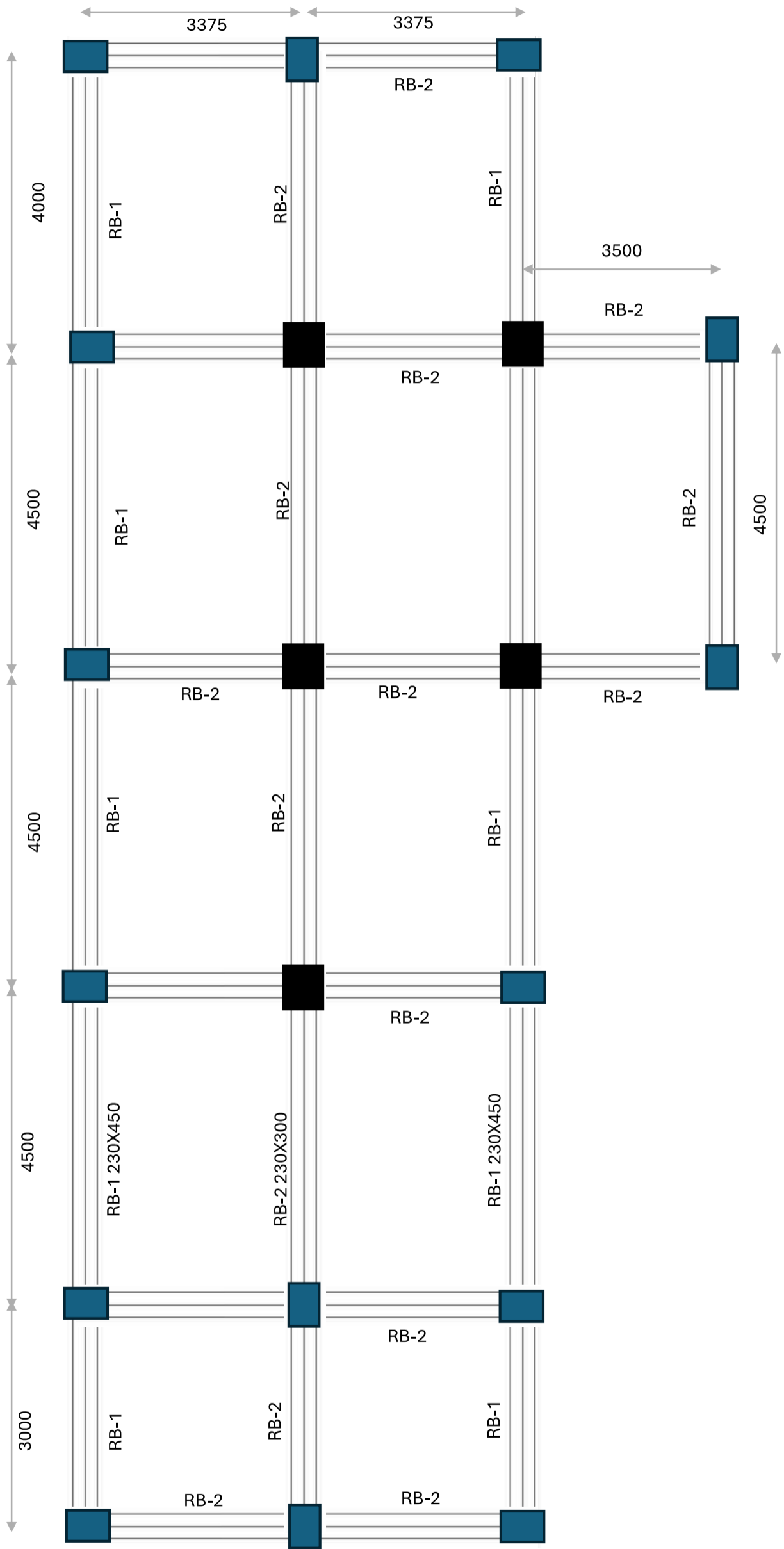
1:1.25

1:1.25

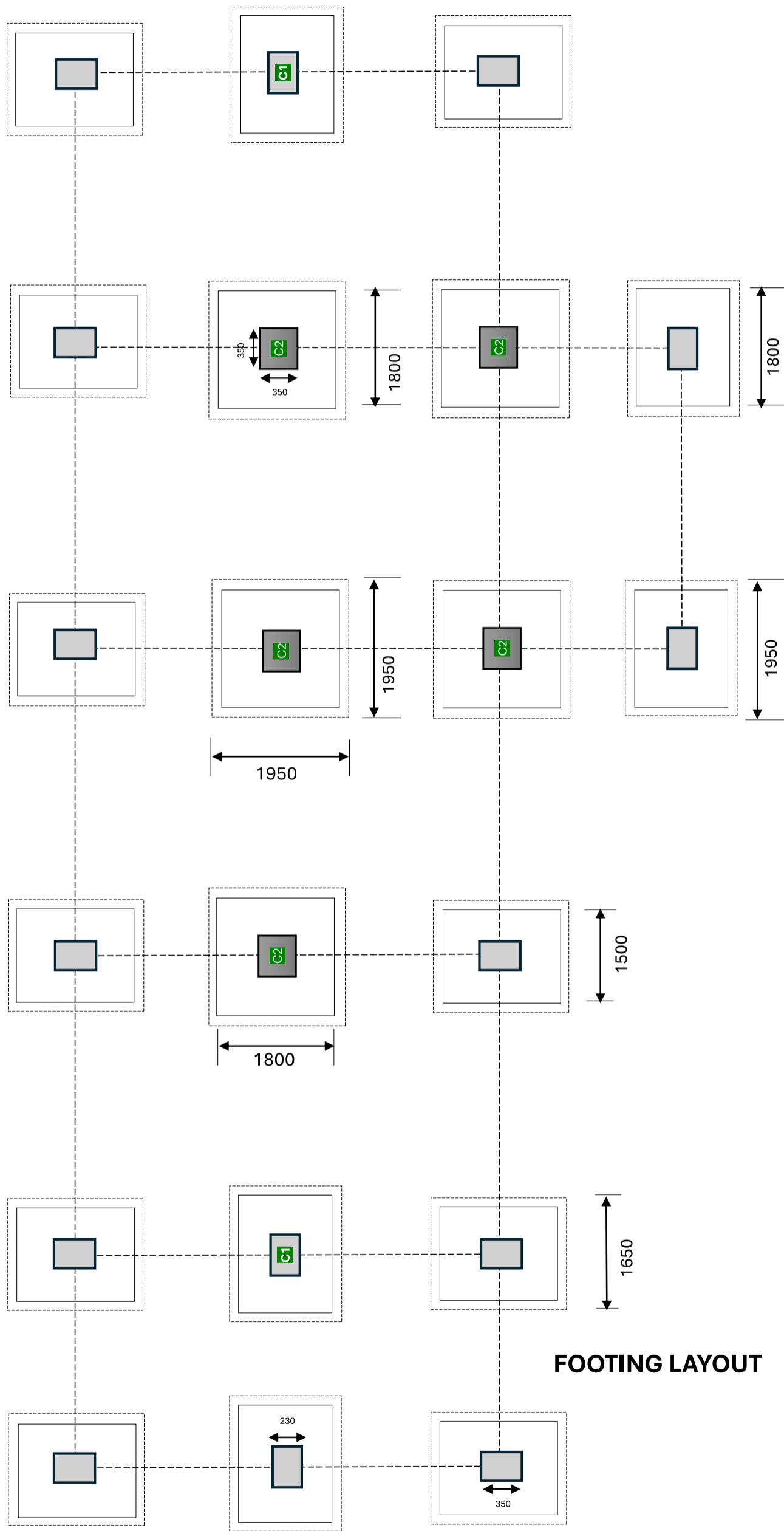
1:1.25



**PLINTH BEAM LAYOUT**



**ROOF BEAM LAYOUT**



**FOOTING LAYOUT**



Sl No.	ID	QUANTITY	DESCRIPTION	OPEN SIZE Sq. mm
1	W-1	5	Window	1800x1300
2	W-2	4	Window	1500x1200
3	W-3	1	Window	1000x1300
4	D <sub>o</sub>	1	Main Entrance door	2000x2100
5	D-1	3	Door	1100x2100
6	D-2	4	Door	750x2100
7	V	1	Ventilator	600x600
8	S	1	Shutter	2000x2100