



पावर ग्रिड कॉर्पोरेशन ऑफ इंडिया लिमिटेड
Power Grid Corporation of India Limited
सूचना का अधिकार अभिनियम 2005 के अंतर्गत केन्द्रीय लोक सूचना अधिकारी
Central Public Information Officer under the RTI Act, 2005
केन्द्रीय कार्यालय, 'सौदामिनी', प्लॉट नं.2, सैक्टर-29, गुडगांव, हरियाणा-122007
Corporate Centre, 'Saudamini', Plot No. 2, Sector-29, Gurgaon, Haryana-
122007



CP/RTI/2016/77

Date: 2nd June, 2016

Shri Mayank Gupta
Star Delta Transformer Limited
92-A, Industrial Area, Govindpura
Bhopal-462023

Sub: Information under Right to Information Act, 2005 (Application No. 77 dated 05.05.2016 received on 10.05.2016.)

Dear Sir,

This has reference to your RTI request dated 5th May, 2016, seeking information under RTI Act, 2005.

The information sought is attached at **Annex-A**.

First Appeal, if any, against the reply of CPIO may be made to the first appellate Authority within 30 days of the receipt of the reply of CPIO. Details of Appellate Authority at Corporate Centre, Gurgaon, under RTI Act, 2005 is as below:

Shri B. Mishra
Executive Director (CP & IT) & Appellate Authority
Corporate Centre, Power Grid Corporation of India Limited
"Saudamini", Plot No. 2, Sector-29, Gurgaon – 122007, Haryana.
Email ID: bmishra@powergridindia.com
Phone No. 0124-2571960

Thanking you,

भवदीय,

सतीश
26/16

(सतीश कुमार जे.)

उप महाप्रबंधक (के.आ.) एवं के.लो.सू.अधिकारी

Phone No. 0124-2822746

Email ID: cpio.cc@powergrid.co.in

Query:

1. It is requested that under RTI act 2005 Kindly provide us item wise marks obtained by us under heading (Formate) A.1, A.2, B.1, B.2, B.3, B.4, C.1, C.2, D& E prescribed by you.

Reply:

1. The item wise detailed break up of marks is attached in Annexure-I.

दिमांशु

(12)

M/s Star Delta Transformers Ltd
Govindpura, Bhopal

A.1 Organization structure showing key personnel

		Available				yes		No			
		Adequacy of manpower (No.)	Dedicated or not	Qualification	Experience	Outsourced	Max. marks	Marks Obtained			
A.2	Key personnel for										
1	Administration	2	Dedicated	BE			5	5			
2	Marketing	2	Dedicated	BE/MBA			10	4			
3	Accounts	3	Dedicated	M.COM			5	3			
4	Service department	3	Dedicated	DIPLOMA			2	1			
5	Engineering	4	Dedicated	BE	As per Annexure I (Organizational chart)	NIL	10	3			
6	Planning	2	Dedicated	BE							
7	Procurement	2	Dedicated	M.COM							
8	Raw material stores	2	Not Dedicated	Graduate							
9	Production	4	Not Dedicated	BE							
10	Quality & testing	5	Not Dedicated	BE							
11	finish stock yard -dispatch	2	Dedicated	DIPLOMA							
Total							100	41			
Weightage (Marks Obtained x 5/100)								2.05			

Details for Activities Outsourced:

S.No.	Job Outsourced	Agency Appointed	Capacity	Remarks on visit to outsourced facilities		
				Satisfactory	Not Satisfactory	Needs Improvement
1	Core Assembly	Mangal Electricals, Jaipur				Not Visited

[Handwritten Signature]
P. Bora
14/10/15

[Handwritten Signature]
P. Bora
14/10/15

B. 1 Design department (in house) function exists

S.No.	Item Description	Max. marks	Marks Obtained
1	No. of Computers system & printers	5	3
2	Software used	15	0
3	Proficiency of personnel	20	7
4	Record maintenance	10	5
Total		50	15
Weightage (Marks Obtained x 5/50)			1.5

B. 2 Inspection of raw material done at source & at works

S.No.	Item Description	Max. marks	Marks Obtained
1	Regularity/consistency of Practice of raw material testing	10	2
2	Adequacy of facility for inspection of raw material	10	2
3	Proficiency of personnel involved	10	2
4	Record maintenance	10	3
5	Labeling/tagging/identification of rejected material	5	0
6	Segregation/storing /disposal of rejected raw material	5	0
Total		50	9
Weightage (Marks Obtained x 10/50)			1.8

B. 3 In process Quality Checks

S.No.	Item Description	Max. marks	Marks Obtained
1	Regularity/consistency of conducting In process Quality Checks	10	3
2	Adequacy of checking stage during manufacturing cycle	10	4
3	Clarity about pass/fail criteria at each check points	10	3
4	Required instruments are permanently available on the spot or not	10	3
5	Job cards / route cards showing stage inspection/process clearance with signature exists	5	0
6	Record maintenance	5	0
Total		50	13
Weightage (Marks Obtained x 10/50)			2.6

B. 4 Facility for Acceptance Tests

S.No.	Item Description	Max. marks	Marks Obtained
1	Regularity/consistency of conducting accpet test	10	6
2	Adequacy of facility for testing final product as per IS	10	6
3	Facility of inspection of raw material available at works	10	0
4	Proficiency of personnel involved	10	4
5	Record maintenance	10	5
6	Labeling/tagging/identification/ Segregation/storing /disposal of rejected product	5	2
Total		50	23
Weightage (Marks Obtained x 10/50)			4.6

P. Anil
14/12/15

14/12/15

14/12/15

M/s Star Delta Transformers Ltd
Govindpura, Bhopal

C.1 Testing and Measurement :

	All	None	Partial Compliance	Max. marks	Marks Obtained
1	Equipment calibrated			15	10
2	Calibard by NABL Accredited lab		v	15	6
3	Traceability of calibration reference	v		10	0
4	Record Maintenance			10	8
Total				50	24
Weightage (Marks Obtained x 10/50)					4.8

C.2 Whether in-house testing lab is lab is NABL accredited ?

yes		full 5 marks		Marks Obtained
No		Zero marks		0

P. Patel
14/12/15

P. Patel
14/12/15

P. Patel
14/12/15

M/s Star Delta Transformers Ltd
Govindpura, Bhopal

D. Quality Systems:

Sl. No.	Attributes	Observations	Max mark	Obtained Marks
1	Quality function independent of production function	fully isolated	5	5
2	Availability of Manufacturing Quality Plan	Not Available	10	0
3	Effectiveness in process Quality checks exist	Efficient	5	0
4	Production and testing records are traceable to raw materials	Traceable but not systematic	10	0
5	Production and testing records are traceable to raw materials	Systematically available	5	0
6	System exists for corrective actions for non-conforming products	Exist but not improvement	5	0

E. Other Issues:

1	Environmental consciousness by obtaining proper clearance, existence of waste disposal system, social accountability of the firm etc	Not available	5	0
---	--	---------------	---	---

P. P. C
14/12/15

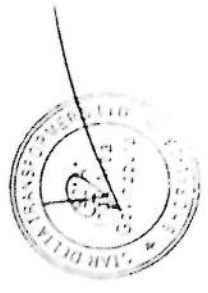
P. P. C
14/12/15

P. P. C
14/12/15

P. P. C

LIST OF PLANT & MACHINERY

S.No.	Machine Name	Qty.	Make	Capacity	Working	Not working	Under maintenance
1	Hypotherm CNC Plasma cutting Machine Model No: - Hypotherm HSD 130 Cutting capacity - cutting upto 30 mm thick sheet of M.S. Stainless Steel etc.	1 No.	HYPOTHERM	30 mm	Working		
2	Electric Crane 40 Tons	1 No.	MEEKA	40 Ton	Working		
3	Electric Crane 15 Tons	1 No.	MARK	15 Ton	Working		
4	Electric Crane 10 Tons	1 No.	MARK	10 Ton	Working		
5	Electric Crane 3 Tons	4 Nos.	MARK	3 Ton	Working		
6	Hydraulic Mobile Crane HYDPA - 12 Tons	1 No.	ACE	12 Ton	Working		
7	Vacuum Oven with pumps, booster, chilling plant, electric & gas burners	1 No.	JEBIVAC	70 Cu. ml	Working		
8	Oil Filtration Double Stage Vacuum separator	1 No.	CEEDEE	2500 LPM	Working		
9	Coil Winding Machine for windings upto 5 Ton weight	2 Nos.	SKAPWIND Ind. Mumbai	5 Ton	Working		
10	Coil Winding Machines for winding weight upto 1 Ton weight	5 Nos.	SKAPWIND Ind. Mumbai	1 Ton	Working		
11	Semi Automatic Pneumatic LT coil winding machine for windings for coils	1 No.	FESTO	Upto 25 KVA	Working		
12	Semi Automatic Pneumatic HT coil winding machine for windings for coils	1 No.	FESTO	Upto 25 KVA	Working		
13	Semi Automatic HV coil winding machine for winding	2 Nos.	FESTO	Upto 200 KVA	Working		
14	HV Coil winding machine (back tension) type	10 Nos.	Babu Fabricators	500 KVA	Working		
15	LT Coil Winding Machine for Coils upto 10 Ton weight	3 Nos.	Babu Fabricators	100 Kgs	Working		
16	Auto B. Refractory for Cast iron & Steel	1 No.	Open Make	15 M Ton	Working		
17	Auto Refractory for Cast iron & Steel	1 No.	Open Make	20 to 50 MVA	Working		
18	Electric Coil Crane Size 20 x 20 x 20	1 No.	Sigma Combustion	310 Cu.D	Working		
19	Electric Coil Crane Size 20 x 20 x 20	1 No.	Sigma Combustion	175 Cu.D	Working		
20	Electric Coil Crane Size 20 x 20 x 20	1 No.	Sigma Combustion	313 Cu.D	Working		
21	Electric Coil Crane Size 20 x 20 x 20	1 No.	Sigma Combustion	340 Cu.D	Working		



Pidic
12/12/15

COJREY
14/12/15

P. B. Reddy
12/12/15

[Signature]

Page No. 2

Sd. No.	Description	Qty.	Make	Capacity	Working	Not working	Under maintenance
22	Collapsible Formers for Windings upto 50 MVA Capacity	2 Nos.	Own make	50 MVA	Working		
23	Hydraulic jacks - 30 T (Coil Pressing)	4 Nos.	Hydralift	30T	Working		
24	Hydraulic jacks - 30 T (Lifting)	4 Nos.	Hydralift	30T	Working		
25	Motorsied shearing machine for pressboard cutting	1 No.	BENDOL	6 ft x 3 mm thick	Working		
27	Press board circle cutting machine	1 No.	Rama Traders	1 No. 600 mm Dia	Working		
28	Hydraulic Pallet Trackles 2 Ton	8 Nos.	Annapurna Trolleys P.Ltd. Ahmedabad	2 Ton	Working		
29	Hydraulic Crimping tool kit	2 Nos.		Ultra 300 mm. So.	Working		
30	Gas Brazing Set	3 Set	ASHA				
31	AVERY weighing bridge 3 Tons	1 No.	AVERY	3MT	Working		
32	AVERY Platform weighing machine 500 Kgs	1 No.	AVERY	500 Kgs	Working		
33	Digital Weighing bridge 300 Kgs	3 Nos.		300 Kgs	Working		
34	MIG welding sets 400 A	2 Nos.	ESAB	400 A	Working		
35	Inverter welding sets 400 A	12 Nos.	Parasemic	400 A	Working		
36	ARC Welding Machine 400 A	2 Nos.	WELD Excel Ind.Ltd.	400 A	Working		
37	Hydraulic Press brake 80T 2.5 Mtr. width	1 No.	SIDHA	80MT	Working		
38	Hydraulic shearing machine 5mm 2.5 Mtr. width	1 No.	BENDOL	2.5 Mtrs x 5 mm	Working		
39	Radial drilling machine 40 mm	2 Nos.	KPT Power Tool	40mm	Working		
40	Drilling Machines 25 mm	2 Nos.	KPT Power Tool	25 mm	Working		
41	Pug Machines	2 Sets	TANGI	—	Working		
42	Hydraulic Hacksaws	2 Nos.	—	—	Working		
43	Angle Grinders	4 Nos.	KPT Power Tool	5"	Working		
44	Air Compressors - 7 Kg/cm ² Cm	2 Nos.	ELGI	7 Kg/cm ²	Working		
45	Air Compressors - Portable	2 Nos.	ELGI	3 Kg/cm ²	Working		
46	Servo Painting sets	3 Sets	—	—			
47	Chain Blocks	2 Sets	Standard Electric	2MT	Working		
48	Slip Sets	12 Sets	Standard Electric	Ultra 5 MT each	Working		
49	Raw Oil Storage Tank 30 KI	1 No.	Own Make	30KI	Working		
50	Processed oil storage tank 10KI	1 No.	Own Make	10KI	Working		
51	Raw oil storage tank 20KI	2 Nos.	Own Make	20KI	Working		



P. Singh
14/12/15

(Anil Kumar)

Asst. Manager

R.E.C. Limited
Project office, Bhopal

Dr. Gopal Manager
(F&R/GVY)

O & M Circle

MS&VV&L Bhopal

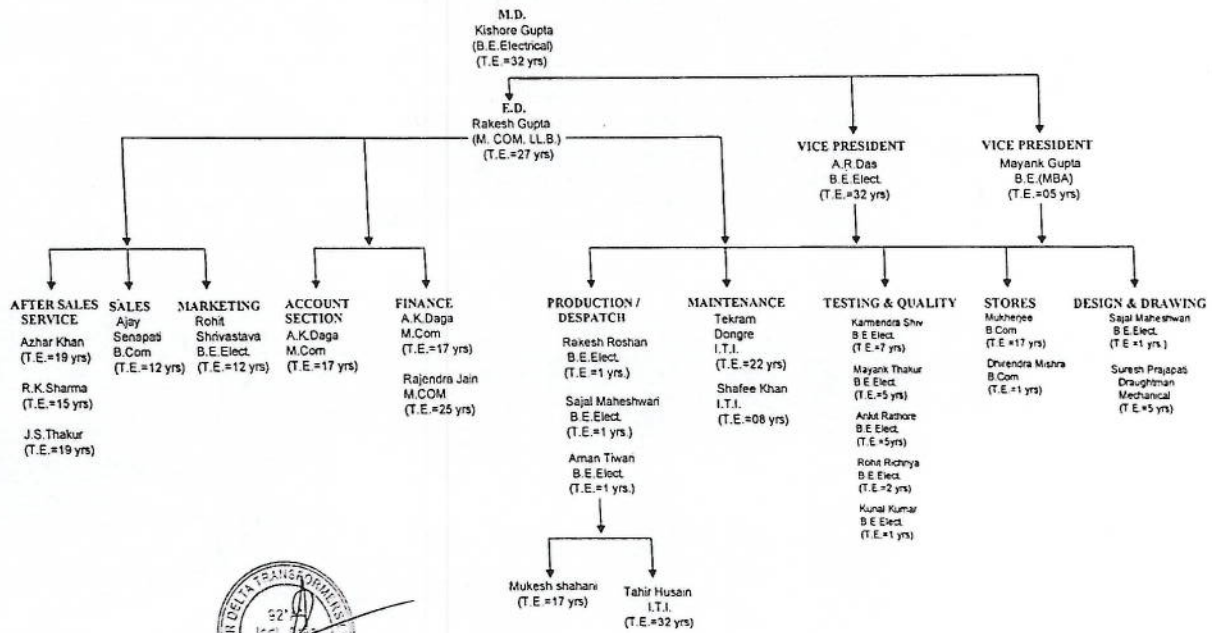
14/12/15

U.Singh
14/12/15
शु.के.सिं/उ.क.सिंह
मुख्य प्रबन्धक/च. प्रबन्धक
राजस्थान विद्युत शक्ति निगम लि. Bhopal

STAR DELTA TRANSFORMERS LIMITED

92-A, INDUSTRIAL AREA GOVINDPURA, BHOPAL-462023 (M.P.)

ORGANIZATION CHART



(T.E.=TOTAL EXPERIENCE)
14/12/2015

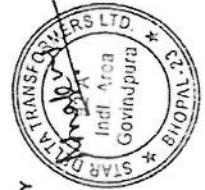


STAR DELTA TRANSFORMERS LTD.

CALIBRATION STATUS OF MEASURING INSTRUMENTS USED DURING TESTING & MEASUREMENT OF DIMENSION

Sr. No.	Particular of Equipment	MAKE	SERIAL No.	QUANTITY	CALIBRATION AGENCY	NABL ACCREDITED LAB.	DATE OF CALIBRATION			CALIBRATION DUE ON		
							D	M	Y	D	M	Y
1	Digital Power Meter	YOKOGAWA	C2PM12061V	1	IDEMI, Mumbai	YES	11	2	2015	10	2	2016
2	Winding Resistance Meter	Eitel	20070708	1	IDEMI, Mumbai	YES	4	6	2015	3	6	2016
6	Digital Voltmeter	Propox	2009	1	Cali-Labs Bpl.	YES	25	9	2015	24	9	2016
7	Digital Frequency Meter	Electrotech	1738	1	Cali-Labs Bpl.	YES	25	9	2015	24	9	2016
8	Megger	Kyoritsu	W0345383	1	IDEMI, Mumbai	YES	4	6	2015	3	6	2016
9	Turns Ratio Meter	Eitel	950212	1	IDEMI, Mumbai	YES	4	6	2015	3	6	2016
10	High Voltage Test Set	Tesla	TEI/HVT/9730	1	IDEMI, Mumbai	YES	4	6	2015	3	6	2016
11	Glass Thermometer	6	Cali-Labs Bpl.	YES	10	4	2015	9	4	2016
12	BDV Test Kit	PRAYOG	OTS-07-112	1	IDEMI, Mumbai	YES	4	6	2015	3	6	2016
13	PT	ECS	ECS/92/225	1	Calibration Solutions	YES	14	2	2015	13	2	2016
14	PT	ECS	ECS/92/226	1	Calibration Solutions	YES	14	2	2015	13	2	2016
15	PT	ECS	ECS/92/76	1	Calibration Solutions	YES	14	2	2015	13	2	2016
16	CT	ECS	ECS/A4883	1	Calibration Solutions	YES	14	2	2015	13	2	2016
17	CT	ECS	ECS/A4892	1	Calibration Solutions	YES	14	2	2015	13	2	2016
18	CT	ECS	ECS/A4481	1	Calibration Solutions	YES	14	2	2015	13	2	2016
19	CT	AE Ltd.	RCB 758	1	Calibration Solutions	YES	14	2	2015	13	2	2016
20	CT	AE Ltd.	RCB 759	1	Calibration Solutions	YES	14	2	2015	13	2	2016
21	CT	AE Ltd.	RCB 760	1	Calibration Solutions	YES	14	2	2015	13	2	2016
22	PT	AE Ltd.	KTA3006	1	Calibration Solutions	YES	14	2	2015	13	2	2016
23	PT	AE Ltd.	KTA3005	1	Calibration Solutions	YES	14	2	2015	13	2	2016
24	PT	AE Ltd.	KTA3007	1	Calibration Solutions	YES	14	2	2015	13	2	2016
25	Micrometer	Mitutoyo	36456260	1	Cali-Labs Bpl.	YES	25	5	2015	24	5	2016
26	Vernier caliper	Mitutoyo	60231864	1	Cali-Labs Bpl.	YES	24	9	2015	23	9	2016
27	Measuring Tape	GK FML	INDI/09/007/189	1	Cali-Labs Bpl.	YES	25	5	2015	24	5	2016
28	Pressure gauge	Scientific	-	1	Cali-Labs Bpl.	YES	25	2	2015	25	2	2016
29	Digital Stop Watch	Kadio	KD-1069	1	Cali-Labs Bpl.	NO	25	5	2015	24	5	2016
30	Vacuum Gauge	Scientific	VG-01	1	Cali-Labs Bpl.	NO	25	9	2015	24	9	2016

CHECKED BY





STAR DELTA TRANSFORMERS LTD.

CALIBRATION STATUS OF MEASURING INSTRUMENTS USED DURING TESTING & MEASUREMENT OF DIMENTION

Sr. No.	Particular of Equipment	MAKE	SERIAL No.	QUANTITY	CALIBRATION AGENCY	NABL ACCREDITED LAB.	DATE OF CALIBRATION			CALIBRATION DUE ON		
							D	M	Y	D	M	Y
31	Digital Power Meter	FLUX	20110	1	Call-Labs Epl	YES	25	5	2015	24	5	2016
32	Digital amp meter	FLUX	201947	1	Call-labs Epl	YES	24	9	2015	23	9	2016
33	Energy amp Meter	AE LAB	495/4957714	1	Call-Labs Epl.	YES	25	9	2015	24	9	2016
34	Energy amp Meter	AE LAB	495/4957698	1	Call-Labs Epl.	YES	25	9	2015	24	9	2016
35	Digital amp meter	FLUX	120826	1	Call-Labs Epl.	YES	24	0	2015	23	0	2016
36	Digital amp meter	FLUX	1128533	1	Call-Labs Epl.	YES	24	0	2015	23	0	2016
37	Digital frequency Meter	FLUX	1148	1	Call-Labs Epl.	YES	25	9	2015	24	9	2016
38	Digital amp meter	FLUX	1	Call-Labs Epl.	YES	24	0	2015	23	0	2016



CHECKED BY