



पावर ग्रिड कारपोरेशन ऑफ इंडिया लिमिटेड

(भारत सरकार का उद्यम)

POWER GRID CORPORATION OF INDIA LIMITED

(A Government of India Enterprise)



पावरग्रिड

दक्षिणी क्षेत्र पारेषण प्रणाली - II क्षेत्रीय मुख्यालय, आर.टी.ओ. ड्राइविंग टेस्ट ट्रैक के पास
सिंहनायकनहल्ली, येलहंका होब्ली, बेंगलूरु - 560 064.

Southern Region Transmission System - II RHQ., Near RTO Driving Test Track, Singanayakanahalli
Yelahanka Hobli, Bangalore - 560 064.

Registered Post- Acknowledgement Due

Ref: SR-II: RTI: F-348:2015/ 42919

3rd Sep. 2015

To
Shri Ashok Kumar
5 Surya Mahal Building
First Floor
Burjorji Bharucha Marg
Fort, MUMBAI – 400 001


Sub: Your RTI application dt.29.07.2015

Sir,

This has reference to your RTI application received in this office on 11.08.2015 through CPIO, CC. In this regard, point-wise reply to the queries pertaining to Southern Region Transmission System-II (SRTS-II) is furnished at Annexure-A.

Thanking you,

Yours faithfully,


(Sunil.K.Thomas)
DGM & CPIO

Encl: Annexure - A

Copy to:

- 1) ED/SRTS-I & II, Appellate Authority, POWERGRID, SRTS-II -for kind information.
- 2) GM(CP) and CPIO, POWERGRID, CC, Gurgaon - for kind information.

CC to: Shri A Nagaraju, AGM & CPIO, POWERGRID, SRTS-I, RHQ, No.6-6-8/32 &
395E, Kavadi guda Main Road, Secunderabad-500 080 (AP)

- The information sought by the applicant is pertaining to sub-stations under SRTS-I also. The same may be furnished to the applicant directly. A copy of the RTI application received through CPIO, CC is enclosed herewith.

स्वहित एवं राष्ट्रहित मे ऊर्जा बचाएं Save Energy for the Benefit of Self and Nation

पंजीकृत कार्यालय : बी-9, कुतब इंस्टीट्यूशनल एरिया, कटवारिया सराय, नई दिल्ली - 110 016. दूरभाष : 26560112. फैक्स : 011-26601081

कारपोरेट कार्यालय : प्लॉट सं: 02, सेक्टर-29, इफको चौक के पास, गुडगांव (हरियाणा)-122001. फैक्स : 0124-251760

Registered Office : B-9, Qutab Institutional Area, Katwaria Sarai, New Delhi - 110 016. Phone : 26560112. Fax : 011-26601081. Grams : NATGRID

Corporate Office : PLOT No. : 02, Sector-29, Near IFFCO CHOWK, GURGAON (HARYANA) - 122001 Fax : 0124-251760 EPABX : 0124-2571700-719

CIN:L40101DL1989GOI038121

DETAILS OF POWERGRID SUBSTATIONS IN KARNATAKA STATE.

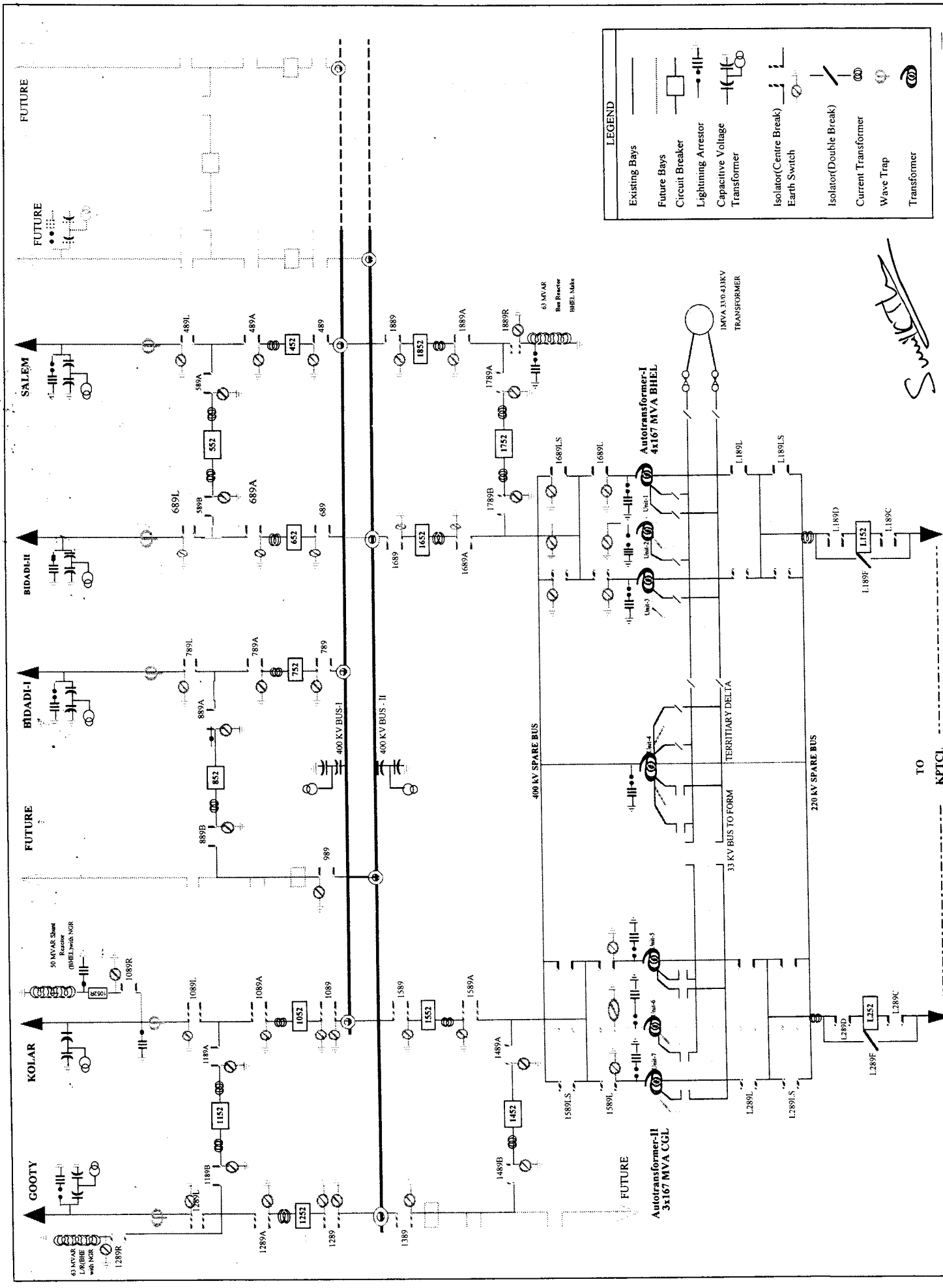
		Bidadi	Hassan	Hiriyur	Mysore
1 Name of SS					
2 Address					
a	Postal Address	400/220kV Bidadi GIS Substat Byramangala Cross, Bangalore- Mysore Road, Ramanagara Taluk, BIDADI-562109	400/220kV Substation, NH48, BM Road, Gadenahally cross, Doddagenegire (Post), Near Shantigram, Hassan, Karnataka-573 220	Hiriyur 400KV Substation 10th KM, Vani Vilas Sagar Road Beerenhalli Village & Post Hiriyur Taluk Chitradurga Dist - 577 599	Mysore 400 KV SS Maidanahalli Village Yelwal-Srirangapatna Road Yelwal Post, Mysore-571 130
b	GPS Coordinates	E 077° 24' 20.0" , N12° 47' 56.3"	E 76° 11' 36.100" , N 12° 59' 30.561"	E076°32" , N13°57'54"	77° 30.4'E, 12° 47.0' N,
c	Phone no.				
3 Details of SS					
a	Type of SS	Transmission	Transmission	Transmission	Transmission
b	Year of Commissioning	2012	2010	2004	2006
c	ip kV voltage	400	400	400	400
d	o/p kV voltage	400/220	400/220	400/220	400/220
e	Type of insulation used	GIS	AIS	AIS	AIS
f	Name of Generators				
g	Capacity of SS to receive power from Generators	Not Applicable, Grid Connected Stations	Not Applicable, Grid Connected Stations	Not Applicable, Grid Connected Stations	Not Applicable, Grid Connected Stations
h	Spare Capacity available	NA	NA	NA	NA
4 SS in charge details					
a	Name	Sh. V J Joseph, DGM (Soman)	Sh. R. Sarath/Manager	Sh. C Seiva Kumar/ASST GM	Sh. Nagaraj Gupta/DGM
b	Phone no.				
c	Mob. No.	9449599029	9449596024	8800897914	9480836419
d	email (SS in charge)	vjoseph@powergridindia.com	ravipati@powergridindia.com	cselvakumar@powergridindia.com	nagarajgupta@powergridindia.com
	(SS)	bidadi@powergrid.co.in	hassanss@powergrid.co.in	hiriyur@powergrid.co.in	mysore@powergrid.co.in
		bidadigis@gmail.com	pgcilsn@yahoo.com	pgcilny@rediffmail.com	mysore@yahoocom
5 Map of Station		SLD Enclosed	SLD Enclosed	SLD Enclosed	SLD Enclosed

S. V. J. Joseph

	Name of SS	Narendra	Somanhalli	Kolar
1	Name of SS			Kolar
2	Address			
a	Postal Address	Narendra 400 KV SS	400 KV Bangalore SS	Kolar 2500 MW HVDC Terminal Station
		Mummigatti Post	26th KM Kanakapura Road	Kolar-Chintamani Road
		Dharwar - 580 011	Somanahalli, BANGALORE-560082.	Arahalli Post, Kolar-563 101
b	GPS Coordinates	E 74°57.057", N 15° 29.907"	12° 47.0' N, 77° 30.4'E	78:07:01.734E, 13:10:39.536N
c	Phone no.			
3	Details of SS			
a	Type of SS	Transmission	Transmission	Converter
b	Year of Commissioning	2005	1986	2002
c	i/p kV voltage	400	400	± 500kV
d	o/p kV voltage	400/220	400/220	400/220
e	Type of insulation used	AIS	AIS	AIS
f	Name of Generators			
g	Capacity of SS to receive power from Generators	Not Applicable, Grid Connected Stations	Not Applicable, Grid Connected Stations	Not Applicable, Grid Connected Stations
h	Spare Capacity available	NA	NA	NA
4	SS in charge details			
a	Name	Sh. Rais Ahmad/CM	Sh. V J Joseph/DGM	Sh. V.G. Rao/DGM
b	Phone no.		080 28432360/396	
c	Mob. No.	94495 99061	9449599029	9448284847
d	email (SS in charge)	rais_ahmad58@yahoo.com	vjoseph@powergridindia.com	vgao@powergridindia.com
		pgnarendrass@powergrid.co.in	somanahalliss@powergrid.co.in	hvdckolar@powergrid.co.in
	(SS)	1	2	2
		pgnarendrass@gmail.com	powergrid_bgiss@yahoo.com	hvdckolarss@gmail.com
5	Map of Station	SLD Enclosed	SLD Enclosed	SLD Enclosed

Smita

BANGALORE 400KV SUBSTATION SINGLE LINE DIAGRAM



LEGEND

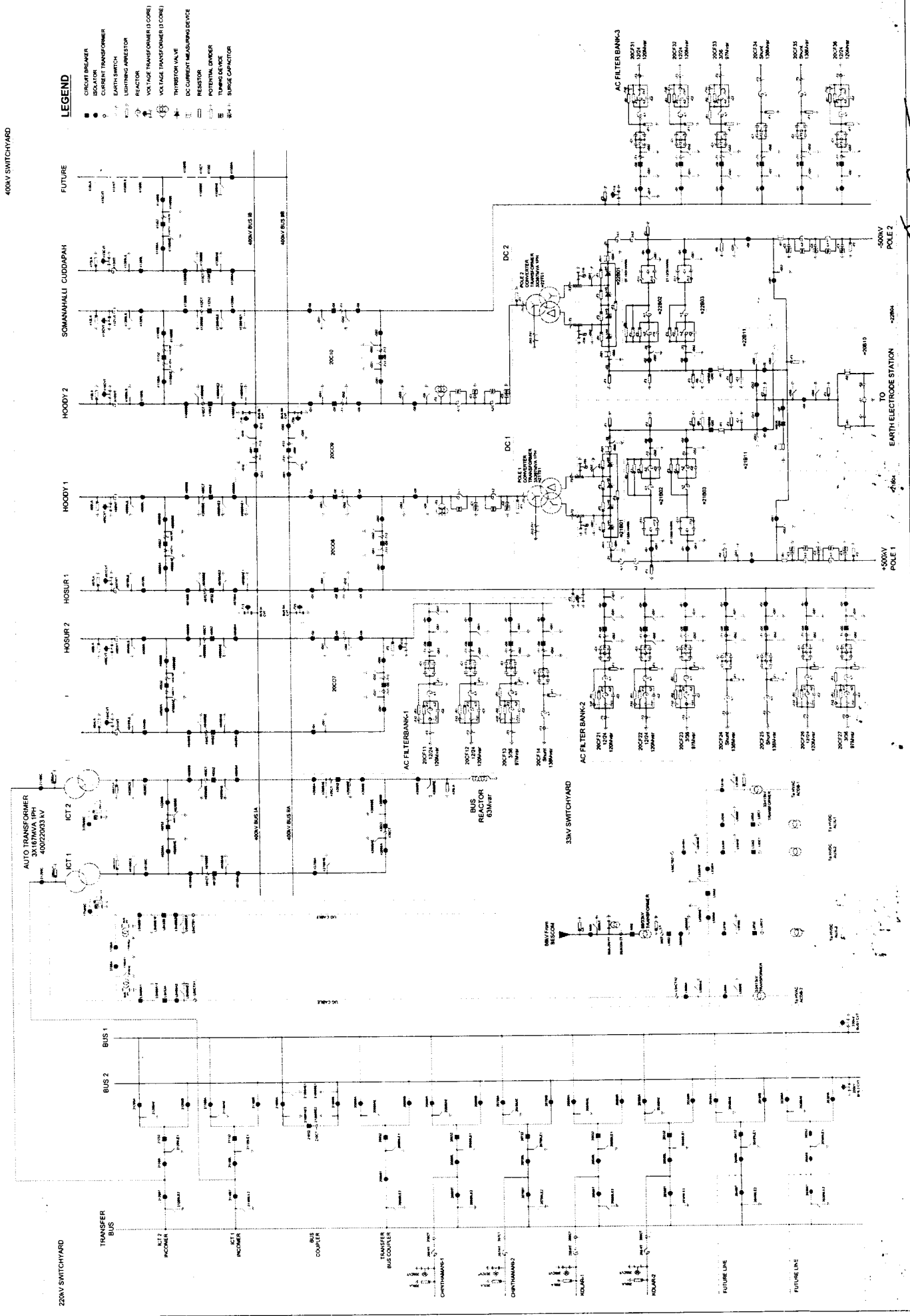
Existing Bays	Future Bays	Circuit Breaker	Lightning Arrestor	Capacitive Voltage Transformer	Isolator (Centre Break) Earth Switch	Isolator (Double Break)	Current Transformer	Wave Trap	Transformer
---------------	-------------	-----------------	--------------------	--------------------------------	--------------------------------------	-------------------------	---------------------	-----------	-------------

S. Srinivas

TO KPTCL

POWERGRID CORPORATION OF INDIA LIMITED

2500 MW, ±500kV HVDC TERMINAL & 400/220kV HVAC STATION KOLAR



- LEGEND**
- CIRCUIT BREAKER
 - ISOLATOR
 - CURRENT TRANSFORMER
 - EARTH SWITCH
 - LIGHTNING ARRESTOR
 - REACTOR
 - VOLTAGE TRANSFORMER (D.CORE)
 - VOLTAGE TRANSFORMER (E.CORE)
 - THYRISTOR VALVE
 - DC CURRENT MEASURING DEVICE
 - RESISTOR
 - POTENTIAL DIVIDER
 - TUNING DEVICE
 - SURGE CAPACITOR

400KV SWITCHYARD

FUTURE

SOMANAHALLI CUDDAPAH

HOODY 2

HOODY 1

HOSUR 2

HOSUR 1

TO EARTH ELECTRODE STATION

±500KV POLE 1

±500KV POLE 2

TO EARTH ELECTRODE STATION

±500KV POLE 1

±500KV POLE 2

TO EARTH ELECTRODE STATION

±500KV POLE 1

±500KV POLE 2

TO EARTH ELECTRODE STATION

±500KV POLE 1

±500KV POLE 2

TO EARTH ELECTRODE STATION

±500KV POLE 1

±500KV POLE 2

TO EARTH ELECTRODE STATION

±500KV POLE 1

±500KV POLE 2

TO EARTH ELECTRODE STATION

±500KV POLE 1

±500KV POLE 2

TO EARTH ELECTRODE STATION

±500KV POLE 1

±500KV POLE 2

TO EARTH ELECTRODE STATION

±500KV POLE 1

±500KV POLE 2

TO EARTH ELECTRODE STATION

±500KV POLE 1

±500KV POLE 2

TO EARTH ELECTRODE STATION

±500KV POLE 1

±500KV POLE 2

TO EARTH ELECTRODE STATION

±500KV POLE 1

±500KV POLE 2

TO EARTH ELECTRODE STATION

±500KV POLE 1

±500KV POLE 2

TO EARTH ELECTRODE STATION

±500KV POLE 1

±500KV POLE 2

TO EARTH ELECTRODE STATION

±500KV POLE 1

±500KV POLE 2

TO EARTH ELECTRODE STATION

±500KV POLE 1

±500KV POLE 2

TO EARTH ELECTRODE STATION

±500KV POLE 1

±500KV POLE 2

TO EARTH ELECTRODE STATION

±500KV POLE 1

±500KV POLE 2

TO EARTH ELECTRODE STATION

±500KV POLE 1

±500KV POLE 2

TO EARTH ELECTRODE STATION

±500KV POLE 1

±500KV POLE 2

TO EARTH ELECTRODE STATION

±500KV POLE 1

±500KV POLE 2

TO EARTH ELECTRODE STATION

±500KV POLE 1

±500KV POLE 2

TO EARTH ELECTRODE STATION

±500KV POLE 1

±500KV POLE 2

TO EARTH ELECTRODE STATION

±500KV POLE 1

±500KV POLE 2

TO EARTH ELECTRODE STATION

±500KV POLE 1

±500KV POLE 2

TO EARTH ELECTRODE STATION

±500KV POLE 1

±500KV POLE 2

TO EARTH ELECTRODE STATION

±500KV POLE 1

±500KV POLE 2

TO EARTH ELECTRODE STATION

±500KV POLE 1

±500KV POLE 2

TO EARTH ELECTRODE STATION

±500KV POLE 1

±500KV POLE 2

TO EARTH ELECTRODE STATION

±500KV POLE 1

±500KV POLE 2

TO EARTH ELECTRODE STATION

±500KV POLE 1

±500KV POLE 2

TO EARTH ELECTRODE STATION

±500KV POLE 1

±500KV POLE 2

TO EARTH ELECTRODE STATION

±500KV POLE 1

±500KV POLE 2

TO EARTH ELECTRODE STATION

±500KV POLE 1

±500KV POLE 2

TO EARTH ELECTRODE STATION

±500KV POLE 1

±500KV POLE 2

TO EARTH ELECTRODE STATION

±500KV POLE 1

±500KV POLE 2

TO EARTH ELECTRODE STATION

±500KV POLE 1

±500KV POLE 2

TO EARTH ELECTRODE STATION

±500KV POLE 1

±500KV POLE 2

TO EARTH ELECTRODE STATION

±500KV POLE 1

±500KV POLE 2

TO EARTH ELECTRODE STATION

±500KV POLE 1

±500KV POLE 2

TO EARTH ELECTRODE STATION

±500KV POLE 1

±500KV POLE 2

TO EARTH ELECTRODE STATION

±500KV POLE 1

±500KV POLE 2

TO EARTH ELECTRODE STATION

±500KV POLE 1

±500KV POLE 2

TO EARTH ELECTRODE STATION

±500KV POLE 1

±500KV POLE 2

TO EARTH ELECTRODE STATION

±500KV POLE 1

±500KV POLE 2

TO EARTH ELECTRODE STATION

±500KV POLE 1

±500KV POLE 2

TO EARTH ELECTRODE STATION

±500KV POLE 1

±500KV POLE 2

TO EARTH ELECTRODE STATION

±500KV POLE 1

±500KV POLE 2

TO EARTH ELECTRODE STATION

±500KV POLE 1

±500KV POLE 2

TO EARTH ELECTRODE STATION

±500KV POLE 1

±500KV POLE 2

TO EARTH ELECTRODE STATION

±500KV POLE 1

±500KV POLE 2

TO EARTH ELECTRODE STATION

±500KV POLE 1

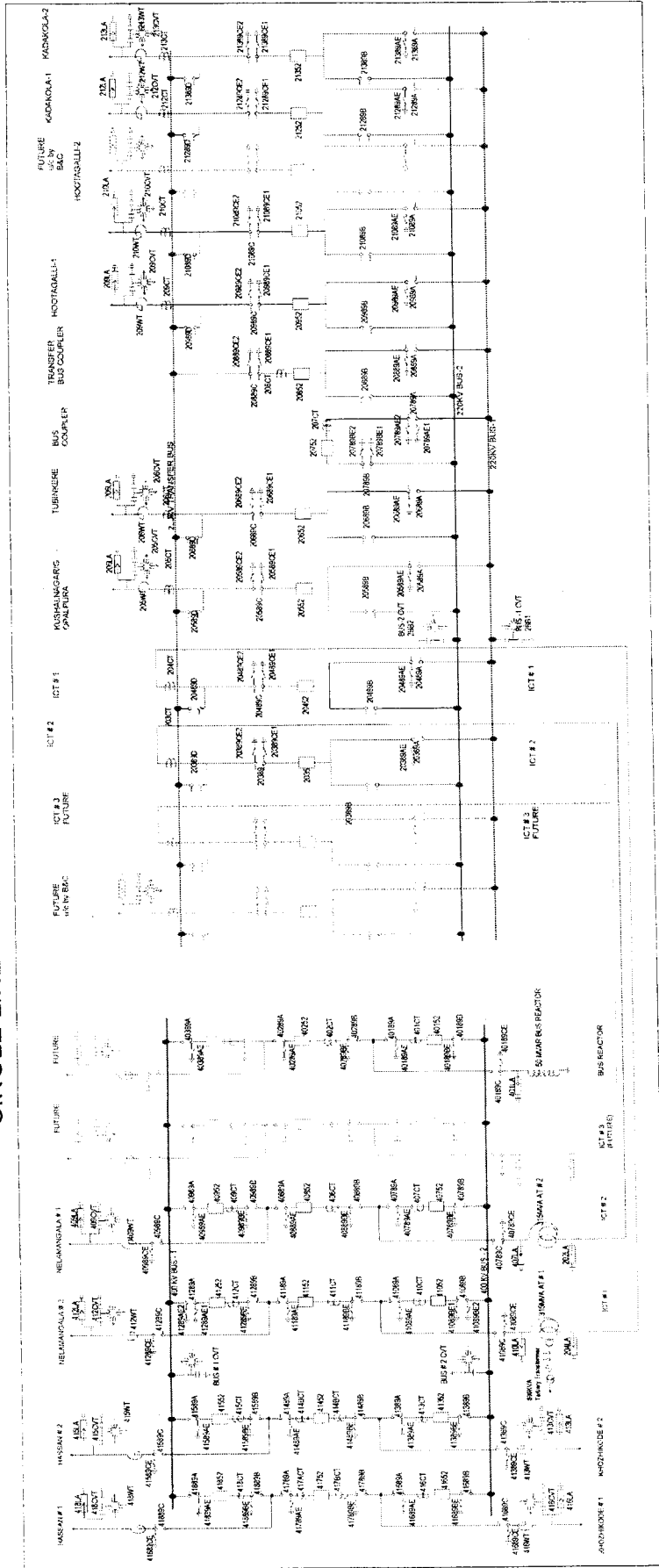
±500KV POLE 2

TO EARTH ELECTRODE STATION

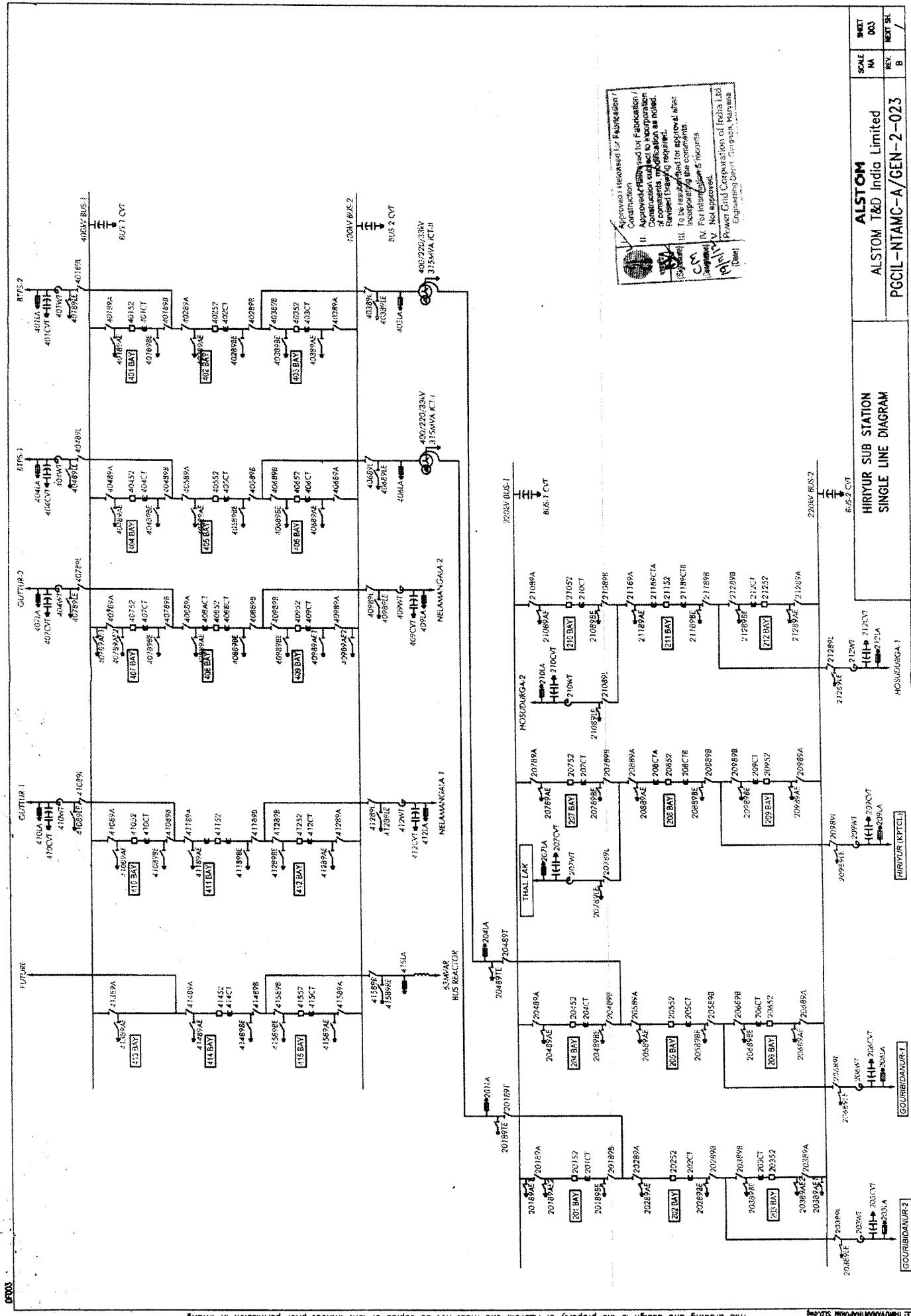
±500KV POLE 1

C. V. K. T. W.

MYSORE SUBSTATION SINGLE LINE DIAGRAM OF 400/220 KV SWITCHYARD



Smita



Approved & released for Fabrication / Construction
 Approved & released for Erection / Construction
 Approved & released for Commissioning / Operation
 Approved & released for Decommissioning / Operation
 Approved & released for Maintenance / Operation
 Approved & released for Testing / Operation
 Approved & released for Safety / Operation
 Approved & released for Security / Operation
 Approved & released for Environmental / Operation
 Approved & released for Health / Operation
 Approved & released for Safety / Operation
 Approved & released for Security / Operation
 Approved & released for Environmental / Operation
 Approved & released for Health / Operation

SHEET	003
SCALE	MA
REV.	B
DATE	/

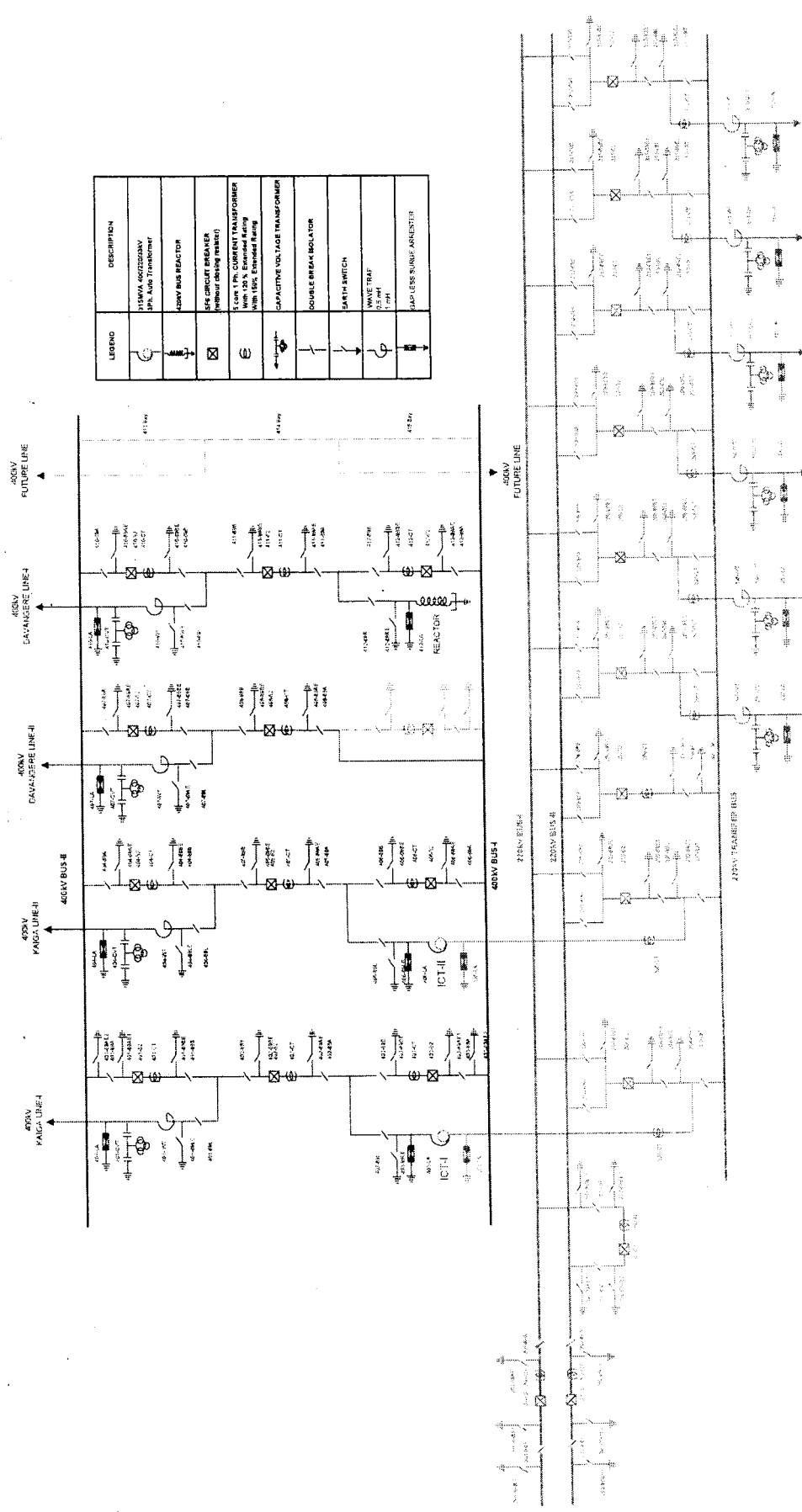
ALSTOM
 ALSTOM T&D India Limited
 PGCIL-NTAMC-A/GEN-2-023

HIRYUR SUB STATION
 SINGLE LINE DIAGRAM

Sunket



POWER GRID CORPORATION OF INDIA LIMITED
SOUTHERN REGION TRANSMISSION SYSTEM - II
NARENDRA SUBSTATION



LEGEND	DESCRIPTION
	115MVA 400/220kV IPI Auto Transformer
	400kV BUS REACTOR
	SF6 CIRCUIT BREAKER (without closing resistor)
	2 core 1 Ph. CURRENT TRANSFORMER (with 120% Enhanced Rating and 100% Standard Rating)
	CAPACITIVE VOLTAGE TRANSFORMER
	DOUBLE BREAK ISOLATOR
	EARTH SWITCH
	WAVE TRAP
	GASLESS SURGE ARRESTER

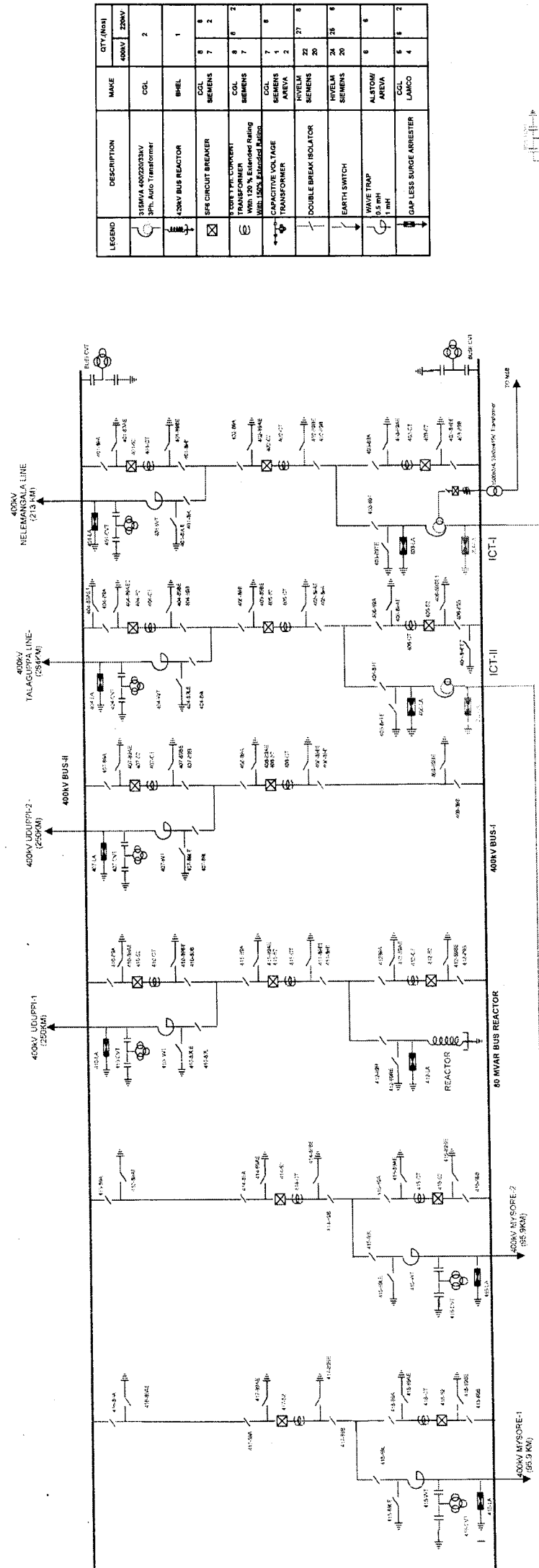
NOTE: REE colour matches equipment in 330KV system.
 Green colour indicates equipment in 220KV system.

400kV KAIGA LINE-I
 400kV KAIGA LINE-II
 400kV DAVANAGERE LINE-I
 400kV DAVANAGERE LINE-II
 400kV FUTURE LINE
 220kV BUS-B
 220kV BUS-C
 220kV BUS-D
 220kV BUS-E
 220kV TRANSMISSION BUS
 220kV FUTURE LINE

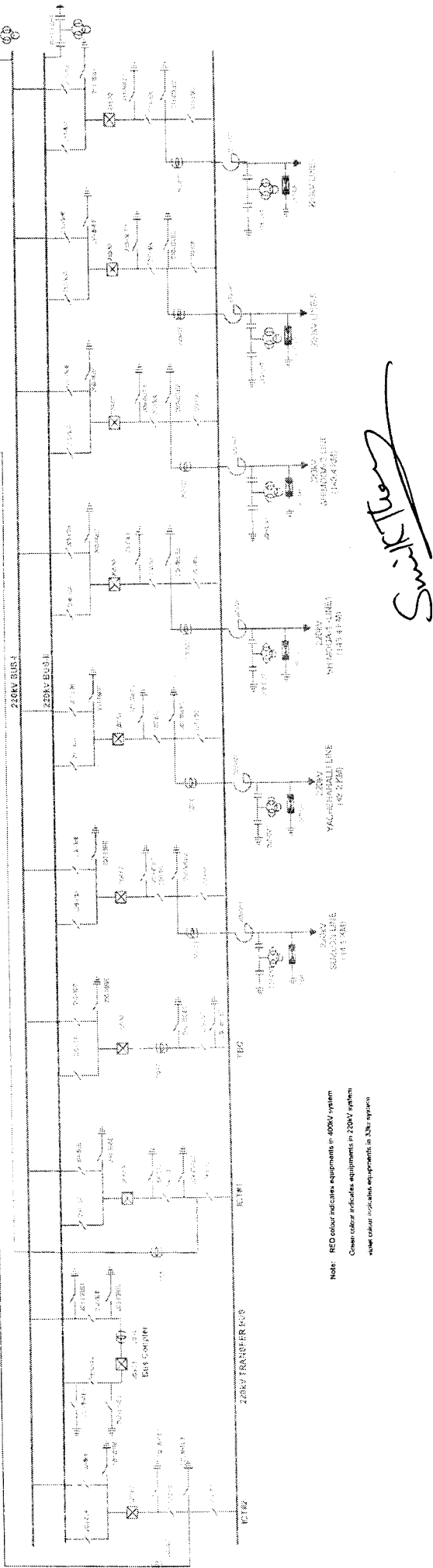
Signature



POWER GRID CORPORATION OF INDIA LIMITED
SOUTHERN REGION TRANSMISSION SYSTEM - II
HASSAN SUBSTATION - SINGLE LINE DIAGRAM



LEGEND	DESCRIPTION	MAKE	QTY (Nos)	
			400KV	220KV
	315MVA 400/220kV 3Ph. Auto Transformer	CGL	2	2
	400kV BUS REACTOR	BHEL	1	
	SF6 CIRCUIT BREAKER	CGL SIEMENS	8	2
	500kV PT CONVERTER TRANSFORMER	CGL SIEMENS	7	2
	WAVE TRAP With 120% Extended Rating With 10% Impedance Limit	CGL SIEMENS	7	6
	CAPACITIVE VOLTAGE TRANSFORMER	AREVA	2	2
	DOUBLE BREAK ISOLATOR	HVELM SIEMENS	26	27
	EARTH SWITCH	HVELM SIEMENS	24	26
	WAVE TRAP 0.5 MH 1 MH	ALSTOM AREVA	8	8
	GAP LESS SURGE ARRESTER	CGL LAMCO	6	4



Note: RED colour indicates equipments in 400kV system
 Green colour indicates equipments in 220kV system
 Yellow colour indicates equipments in 33kV system

Swati Kulkarni

